

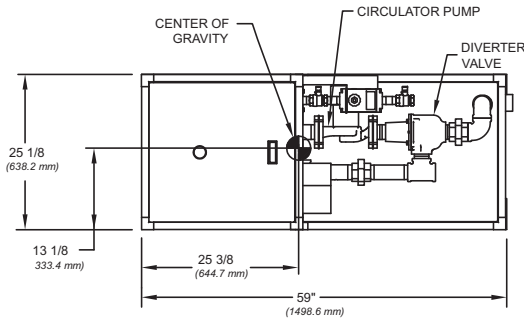
**CODE OPTIONS**

<b>CSD-1</b>	Manual Reset LWCO
<b>Kentucky</b>	200° F Maximum Operating Control and High Limit

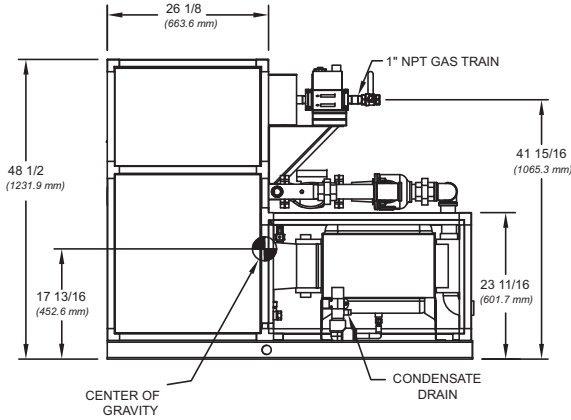
**NOTE:** Dimensions are approximate and should not be used to "rough-in" equipment.

\* Includes pump

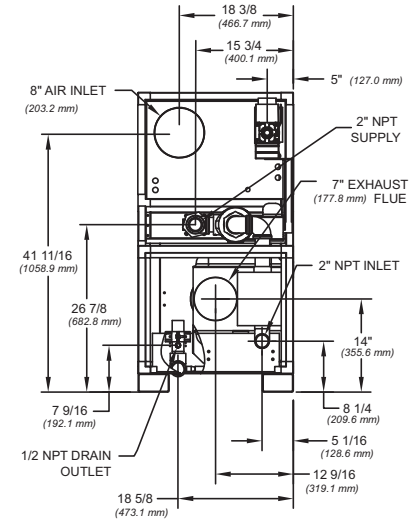
\*\* For incoming gas pressures lower than 2" W.C. natural or propane, consult factory.



**TOP VIEW**



**SIDE VIEW**



**BACK VIEW**

RSUB 96 REV. C

**A.G.A. CERTIFIED RATINGS & CAPACITIES**

<b>Fuel Type</b>	Natural/Propane Gas	<b>Total FLA</b>	9*
<b>Input BTU/hr.</b>	500,000 / 147 kW	<b>Min. Gas Pressure Required</b>	2" W.C.**
<b>Output BTU/hr.</b>	490,000 / 144 kW	<b>Max. Gas Pressure Allowed</b>	14" W.C.
<b>Electrical Requirements</b>	120VAC/ 1 ph/ 60 hz	<b>Operating Weight</b>	569 lbs. / 258 kg.

**TEMPERATURE RISE / PRESSURE DROP**

15° F / 8.3° C			
Flow Rate		Total Loss***	
GPM	L/s	Ft	kPa
58.0	3.7	8.8	26.3

\*\*\*Includes primary, secondary, mixing valve and piping.

**BOILER TRIM & CONTROLS**

<b>Main Gas Valve</b>	Dungs DMV-SE512/11	<b>Manual Pilot Valve</b>	Honeywell V8046C
<b>Firing Valve</b>	Honeywell B200T1033 1"	<b>Air Switch</b>	Cleveland RSS-495
<b>Ignition Control</b>	Honeywell RM7895C	<b>Blower Motor</b>	Fasco 1/2 hp
<b>Operating Control</b>	HeatNet™	<b>Relief Valve - CW</b>	3/4" x 3/4" set @ 125 psi
<b>High Limit</b>	Jumo	<b>Relief Valve - CB</b>	3/4" x 3/4" set @ 50 psi
<b>Main Ball Valve</b>	1"	<b>Flow Switch</b>	IFS-1
<b>Pilot Cock</b>	1/4" Honeywell B528	<b>Solenoid Valve w/ Reg</b>	CV100
<b>Economizer</b>	RBI-1000	<b>Circulator</b>	TACO 1400 - 70 - FLA - 5
<b>Mixing Valve</b>	2"	<b>By-Pass Piping</b>	2"

**RECOVERY CAPACITY**

40°F	22° C	60°F	33° C	80°F	44° C	100°F	56° C	120°F	67° C	140°F	78° C
1471	5567	980	3711	735	2783	588	2227	490	1856	420	1591

**A.S.M.E.**

<b>ASME Sect IV Htg Surface</b>	69.51 Sq. Ft. / 6.46 Sq. M.	<b>Design Data</b>	Max. 160 psig & 250° F
<b>Water Volume</b>	3.4 gal. / 12.91 l (liters)	<b>Secondary Heat Exchanger</b>	125 psig
<b>Water Volume Secondary HX</b>	4.5 gal. / 17.03 l (liters)		

<b>REP FIRM</b>	_____	<p><b>FUTERA FUSION 500</b></p> <p><b>Category IV Appliance</b></p> <p>(see Installation and Operation Manual for venting information)</p> <p>® A Division of Mestek, Inc. Westfield, MA 01085 (413) 568-9571</p>
<b>SUBMITTED BY</b>	_____	
<b>JOB NAME</b>	_____	
<b>ARCHITECT</b>	_____	
<b>ENGINEER</b>	_____	
<b>CONTRACTOR</b>	_____	
<b>DATE</b>	_____	

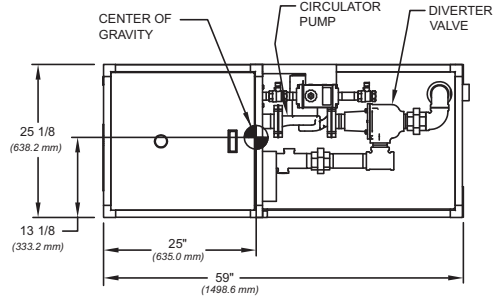
SFTF-500-3

**CODE OPTIONS**

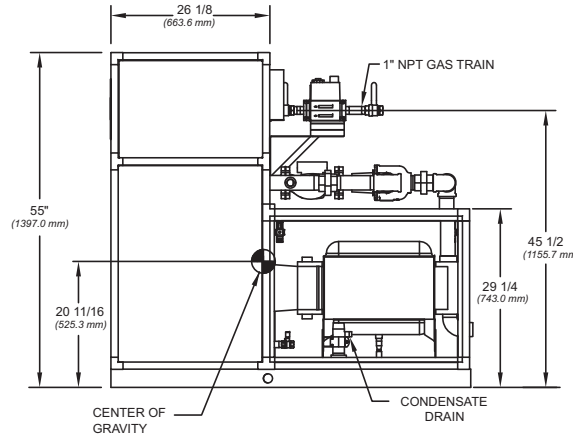
<b>CSD-1</b>	Manual Reset LWCO
<b>Kentucky</b>	200° F Maximum Operating Control and High Limit

**NOTE:** Dimensions are approximate and should not be used to "rough-in" equipment.

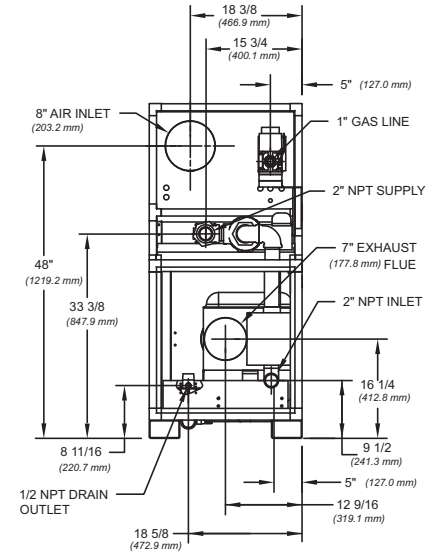
\* Includes pump  
 \*\* For incoming gas pressures lower than 2" W.C. natural or propane, consult factory.



**TOP VIEW**



**SIDE VIEW**



**BACK VIEW**

RSUB 97 REV. C

**A.G.A. CERTIFIED RATINGS & CAPACITIES**

<b>Fuel Type</b>	Natural/Propane Gas	<b>Total FLA</b>	9*
<b>Input BTU/hr.</b>	750,000 / 220 kW	<b>Min. Gas Pressure Required</b>	2" W.C.**
<b>Output BTU/hr.</b>	727,500 / 213 kW	<b>Max. Gas Pressure Allowed</b>	14" W.C.
<b>Electrical Requirements</b>	120VAC/ 1 ph/ 60 hz	<b>Operating Weight</b>	699 lbs. / 317 kg.

**TEMPERATURE RISE / PRESSURE DROP**

20° F / 11.1° C				25° F / 13.9° C			
Flow Rate		Total Loss***		Flow Rate		Total Loss***	
GPM	L/s	Ft	kPa	GPM	L/s	Ft	kPa
65.3	4.1	10.5	31.4	52.2	3.3	7.7	23.0

\*\*\*Includes primary, secondary, mixing valve and piping.

**BOILER TRIM & CONTROLS**

<b>Main Gas Valve</b>	Dungs DMV-SE512/11	<b>Manual Pilot Valve</b>	Honeywell V8046C
<b>Firing Valve</b>	Honeywell B200T1033 1"	<b>Air Switch</b>	Cleveland RSS-495
<b>Ignition Control</b>	Honeywell RM7895C	<b>Blower Motor</b>	Fasco 1/2 hp
<b>Operating Control</b>	HeatNet™	<b>Relief Valve - CW</b>	3/4" x 3/4" set @ 125 psi
<b>High Limit</b>	Jumo	<b>Relief Valve - CB</b>	3/4" x 3/4" set @ 50 psi
<b>Main Ball Valve</b>	1"	<b>Flow Switch</b>	IFS-1
<b>Pilot Cock</b>	1/4" Honeywell B528	<b>Solenoid Valve w/ Reg</b>	CV100
<b>Economizer</b>	RBI-1000	<b>Circulator</b>	TACO 1400 - 70 - FLA - 5
<b>Mixing Valve</b>	2"	<b>By-Pass Piping</b>	2"

**A.S.M.E.**

<b>ASME Sect IV Htg Surface</b>	97.79 Sq. Ft. / 9.08 Sq. M.	<b>Design Data</b>	Max. 160 psig & 250° F
<b>Water Volume</b>	3.7 gal. / 14.01 l (liters)	<b>Secondary Heat Exchanger</b>	125 psi
<b>Water Volume Secondary HX</b>	4.5 gal. / 17.03 l (liters)		

**RECOVERY CAPACITY**

40°F	22° C	60°F	33° C	80°F	44° C	100°F	56° C	120°F	67° C	140°F	78° C
2183	8265	1456	5510	1092	4132	873	3306	728	2755	624	2361

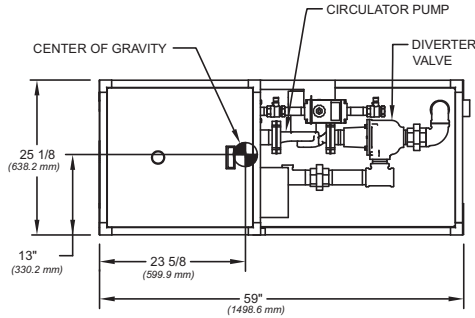
<b>REP FIRM</b>	_____	<b>FUTERA FUSION 750</b> Category IV Appliance (see Installation and Operation Manual for venting information)  A Division of Mestek, Inc. Westfield, MA 01085 (413) 568-9571
<b>SUBMITTED BY</b>	_____	
<b>JOB NAME</b>	_____	
<b>ARCHITECT</b>	_____	
<b>ENGINEER</b>	_____	
<b>CONTRACTOR</b>	_____	
<b>DATE</b>	_____	

**CODE OPTIONS**

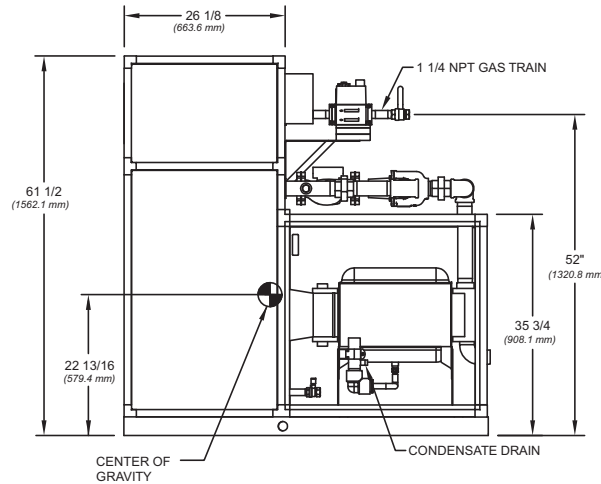
<b>CSD-1</b>	Manual Reset LWCO
<b>Kentucky</b>	200° F Maximum Operating Control and High Limit

**NOTE:** Dimensions are approximate and should not be used to "rough-in" equipment.

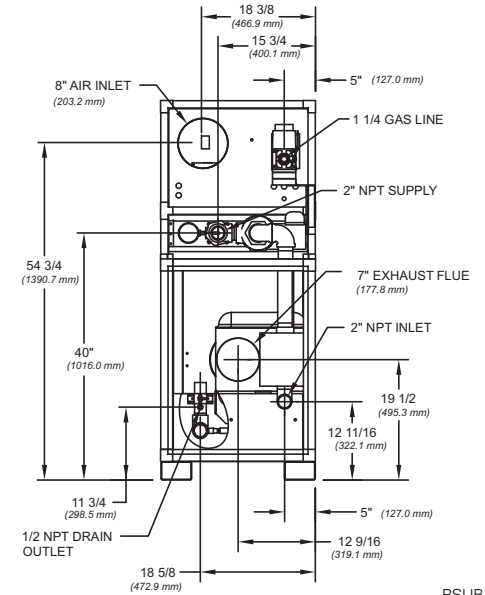
\* Includes pump  
 \*\* For incoming gas pressures lower than 2" W.C. natural or propane, consult factory.



**TOP VIEW**



**SIDE VIEW**



**BACK VIEW**

RSUB 98 REV. C

**A.G.A. CERTIFIED RATINGS & CAPACITIES**

<b>Fuel Type</b>	Natural/Propane Gas	<b>Total FLA</b>	10*
<b>Input BTU/hr.</b>	1,000,000 / 293 kW	<b>Min. Gas Pressure Required</b>	2" W.C.**
<b>Output BTU/hr.</b>	970,000 / 284 kW	<b>Max. Gas Pressure Allowed</b>	14" W.C.
<b>Electrical Requirements</b>	120VAC/ 1 ph/ 60 hz	<b>Operating Weight</b>	709 lbs. / 322 kg.

**TEMPERATURE RISE / PRESSURE DROP**

30° F / 16.7° C			
Flow Rate		Total Loss***	
GPM	L/s	Ft	kPa
58.0	3.7	9.5	28.4

\*\*\*Includes primary, secondary, mixing valve and piping.

**BOILER TRIM & CONTROLS**

<b>Main Gas Valve</b>	Dungs DMV-SE512/11	<b>Manual Pilot Valve</b>	Honeywell V8046C
<b>Firing Valve</b>	Honeywell B200T1041 1 1/4"	<b>Air Switch</b>	Cleveland RSS-495
<b>Ignition Control</b>	Honeywell RM7895C	<b>Blower Motor</b>	Fasco 1/2 hp
<b>Operating Control</b>	HeatNet™	<b>Relief Valve - CW</b>	3/4" x 3/4" set @ 125 psi
<b>High Limit</b>	Jumo	<b>Relief Valve - CB</b>	3/4" x 3/4" set @ 50 psi
<b>Main Ball Valve</b>	1 1/4"	<b>Flow Switch</b>	IFS-1
<b>Pilot Cock</b>	1/4" Honeywell B528	<b>Solenoid Valve w/ Reg</b>	CV100
<b>Economizer</b>	RBI-1000	<b>Circulator</b>	TACO 1400 - 7 - FLA - 5
<b>Mixing Valve</b>	2"	<b>By-Pass Piping</b>	2"

**RECOVERY CAPACITY**

40°F	22° C	60°F	33° C	80°F	44° C	100°F	56° C	120°F	67° C	140°F	78° C
2911	11,020	1941	7347	1456	5510	1164	4408	970	3673	832	3149

**A.S.M.E.**

<b>ASME Sect IV Htg Surface</b>	126.07 Sq. Ft. / 11.71 Sq. M.	<b>Design Data</b>	Max. 160 psig & 250° F
<b>Water Volume</b>	4 gal. / 15.14 l (liters)	<b>Secondary Heat Exchanger</b>	125 psi
<b>Water Volume Secondary HX</b>	4.5 gal. / 17.03 l (liters)		

<b>REP FIRM</b>	_____	<b>FUTERA FUSION 1000</b>
<b>SUBMITTED BY</b>	_____	
<b>JOB NAME</b>	_____	<b>Category IV Appliance</b>
<b>ARCHITECT</b>	_____	(see Installation and Operation Manual for venting information)
<b>ENGINEER</b>	_____	
<b>CONTRACTOR</b>	_____	
<b>DATE</b>	_____	

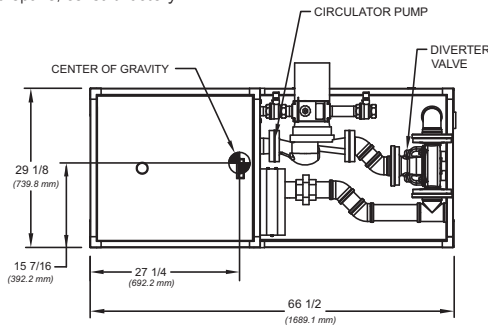
**RBI**® A Division of Mestek, Inc.  
 Westfield, MA 01085  
 (413) 568-9571

**CODE OPTIONS**

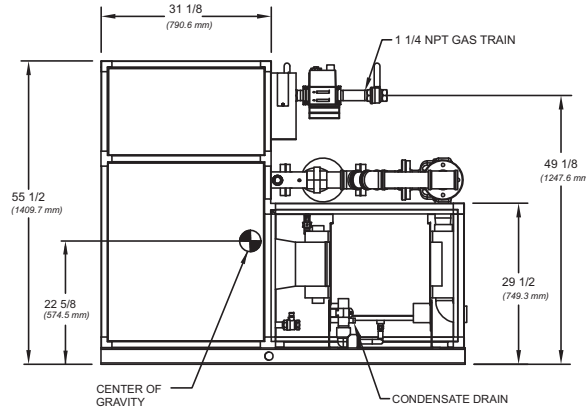
<b>CSD-1</b>	Manual Reset LWCO
<b>Kentucky</b>	200° F Maximum Operating Control and High Limit

**NOTE:** Dimensions are approximate and should not be used to "rough-in" equipment.

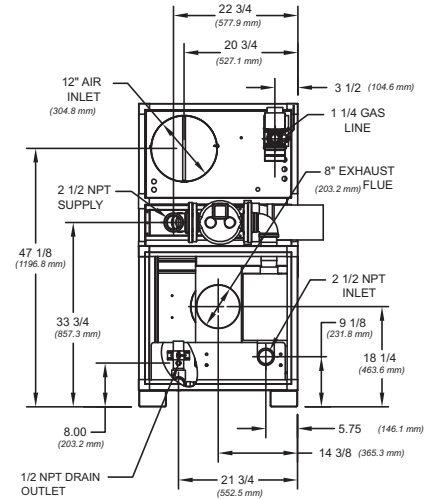
\* Includes pump  
 \*\* For incoming gas pressures lower than 2" W.C. natural or propane, consult factory.



**TOP VIEW**



**SIDE VIEW**



**BACK VIEW**

RSUB 99 REV. C

**A.G.A. CERTIFIED RATINGS & CAPACITIES**

<b>Fuel Type</b>	Natural/Propane Gas	<b>Total FLA</b>	16*
<b>Input BTU/hr.</b>	1,250,000 / 366 kW	<b>Min. Gas Pressure Required</b>	2" W.C.**
<b>Output BTU/hr.</b>	1,200,000 / 352 kW	<b>Max. Gas Pressure Allowed</b>	14" W.C.
<b>Electrical Requirements</b>	(L1,L2,NEU,GND) 208-240VAC/1 ph/60 Hz	<b>Operating Weight</b>	868 lbs. / 394 kg.

**TEMPERATURE RISE / PRESSURE DROP**

20° F / 11.1° C		25° F / 13.9° C	
Flow Rate	Total Loss***	Flow Rate	Total Loss***
GPM	L/s	Ft	kPa
108.8	6.9	11.6	34.7
87.0	5.5	8.2	24.4

\*\*\*Includes primary, secondary, mixing valve and piping.

**BOILER TRIM & CONTROLS**

<b>Main Gas Valve</b>	Dungs DMV-SE512/11	<b>Manual Pilot Valve</b>	Honeywell V8046C
<b>Firing Valve</b>	Honeywell B200T1041 1 1/4"	<b>Air Switch</b>	Cleveland RSS-495
<b>Ignition Control</b>	Honeywell RM7895C	<b>Blower Motor</b>	Fasco 1 hp
<b>Operating Control</b>	HeatNet™	<b>Relief Valve - CW</b>	3/4" x 3/4" set @ 125 psi
<b>High Limit</b>	Jumo	<b>Relief Valve - CB</b>	3/4" x 1" set @ 50 psi
<b>Main Ball Valve</b>	1 1/4"	<b>Flow Switch</b>	IFS-1
<b>Pilot Cock</b>	1/4" Honeywell B528	<b>Solenoid Valve w/ Reg</b>	CV100
<b>Economizer</b>	RBI-1500	<b>Circulator</b>	TACO 1935 (3/4 hp) - FLA 11
<b>Mixing Valve</b>	2 1/2"	<b>By-Pass Piping</b>	2 1/2"

**RECOVERY CAPACITY**

40°F	22° C	60°F	33° C	80°F	44° C	100°F	56° C	120°F	67° C	140°F	78° C
3601	13,633	2401	9089	1801	6816	1441	5453	1200	4544	1029	3895

**A.S.M.E.**

<b>ASME Sect IV Htg Surface</b>	133.76 Sq. Ft. / 12.43 Sq. M.	<b>Design Data</b>	Max. 160 psig & 250° F
<b>Water Volume</b>	4.7 gal. / 17.79 l (liters)	<b>Secondary Heat Exchanger</b>	125 psi
<b>Water Volume Secondary HX</b>	5.96 gal. / 22.56 l (liters)		

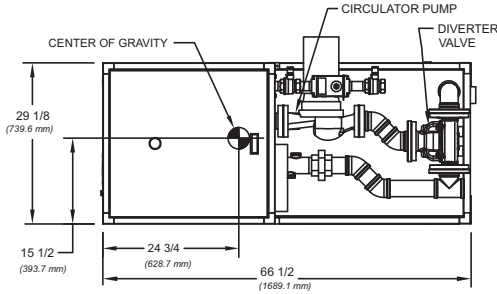
<b>REP FIRM</b>	_____	<p><b>FUTERA FUSION 1250</b></p> <p><b>Category IV Appliance</b></p> <p>(see Installation and Operation Manual for venting information)</p>  <p>A Division of Mestek, Inc.                  Westfield, MA 01085                  (413) 568-9571</p>
<b>SUBMITTED BY</b>	_____	
<b>JOB NAME</b>	_____	
<b>ARCHITECT</b>	_____	
<b>ENGINEER</b>	_____	
<b>CONTRACTOR</b>	_____	
<b>DATE</b>	_____	

**CODE OPTIONS**

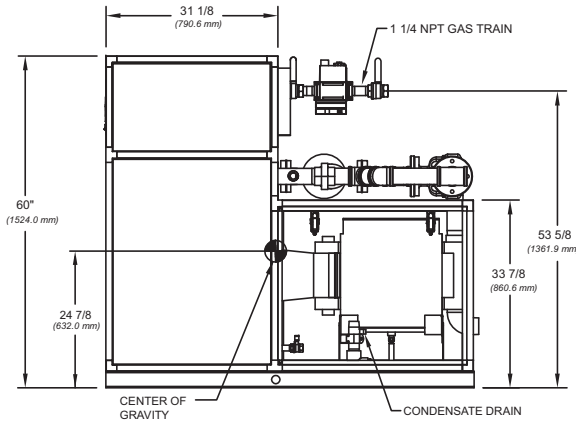
<b>CSD-1</b>	Manual Reset LWCO
<b>Kentucky</b>	200° F Maximum Operating Control and High Limit

**NOTE:** Dimensions are approximate and should not be used to "rough-in" equipment.

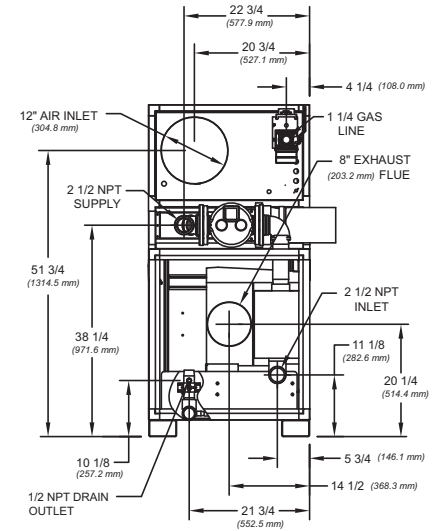
\* Includes pump  
 \*\* For incoming gas pressures lower than 2" W.C. natural or propane, consult factory.



**TOP VIEW**



**SIDE VIEW**



**BACK VIEW**

RSUB 100 REV. C

**A.G.A. CERTIFIED RATINGS & CAPACITIES**

<b>Fuel Type</b>	Natural/Propane Gas	<b>Total FLA</b>	19*
<b>Input BTU/hr.</b>	1,500,000 / 440 kW	<b>Min. Gas Pressure Required</b>	2" W.C.**
<b>Output BTU/hr.</b>	1,440,000 / 422 kW	<b>Max. Gas Pressure Allowed</b>	14" W.C.
<b>Electrical Requirements</b>	(L1,L2,NEU,GND) 208-240VAC/1 ph/60 hz	<b>Operating Weight</b>	905 lbs. / 411 kg.

**TEMPERATURE RISE / PRESSURE DROP**

25° F / 13.9° C		30° F / 16.7° C	
Flow Rate	Total Loss***	Flow Rate	Total Loss***
GPM L/s	Ft kPa	GPM L/s	Ft kPa
104.4 6.6	11.6 34.7	87.0 5.5	8.5 25.4

\*\*\*Includes primary, secondary, mixing valve and piping.

**BOILER TRIM & CONTROLS**

<b>Main Gas Valve</b>	Dungs DMV-SE512/11	<b>Manual Pilot Valve</b>	Honeywell V8046C
<b>Firing Valve</b>	Honeywell B200T1041 1 1/4"	<b>Air Switch</b>	Cleveland RSS-495
<b>Ignition Control</b>	Honeywell RM7895C	<b>Blower Motor</b>	Fasco 1 hp
<b>Operating Control</b>	HeatNet™	<b>Relief Valve - CW</b>	3/4" x 3/4" set @ 125 psi
<b>High Limit</b>	Jumo	<b>Relief Valve - CB</b>	1" x 1 1/4" set @ 50 psi
<b>Main Ball Valve</b>	1 1/4"	<b>Flow Switch</b>	IFS-1
<b>Pilot Cock</b>	1/4" Honeywell B528	<b>Solenoid Valve w/ Reg</b>	CV100
<b>Economizer</b>	RBI-1500	<b>Circulator</b>	TACO 1935 (1 hp) - FLA 14
<b>Mixing Valve</b>	2 1/2"	<b>By-Pass Piping</b>	2 1/2"

**A.S.M.E.**

<b>ASME Sect IV Htg Surface</b>	161.16 Sq. Ft. / 14.97 Sq. M.	<b>Design Data</b>	Max. 160 psig & 250° F
<b>Water Volume</b>	5 gal. / 18.93 l (liters)	<b>Secondary Heat Exchanger</b>	125 psi
<b>Water Volume Secondary HX</b>	5.96 gal. / 22.56 l (liters)		

**RECOVERY CAPACITY**

40°F	22° C	60°F	33° C	80°F	44° C	100°F	56° C	120°F	67° C	140°F	78° C
4322	16,360	2881	10,906	2161	8180	1729	6544	1441	5453	1235	4674

<b>REP FIRM</b>	_____	<p><b>FUTERA FUSION 1500</b></p> <p>Category IV Appliance</p> <p>(see Installation and Operation Manual for venting information)</p> <p><b>RBI</b>® A Division of Mestek, Inc.                  Westfield, MA 01085                  (413) 568-9571</p>
<b>SUBMITTED BY</b>	_____	
<b>JOB NAME</b>	_____	
<b>ARCHITECT</b>	_____	
<b>ENGINEER</b>	_____	
<b>CONTRACTOR</b>	_____	
<b>DATE</b>	_____	

SFTF-1500-3

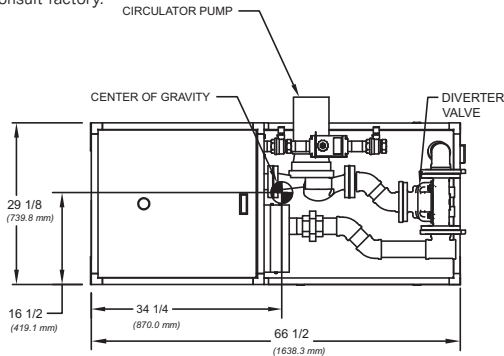
**CODE OPTIONS**

<b>CSD-1</b>	Manual Reset LWCO
<b>Kentucky</b>	200° F Maximum Operating Control and High Limit

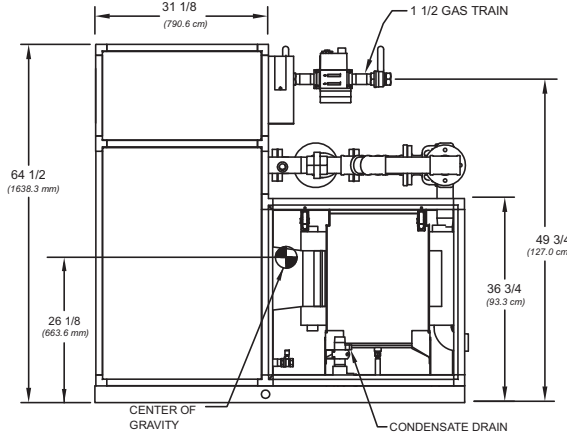
**NOTE:** Dimensions are approximate and should not be used to "rough-in" equipment.

\* Includes pump

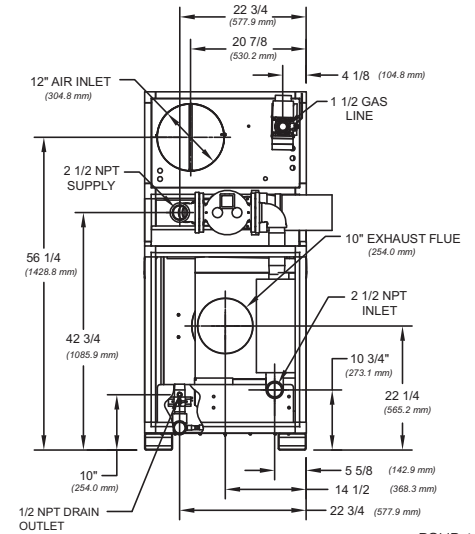
\*\* For incoming gas pressures lower than 2" W.C. natural or propane, consult factory.



**TOP VIEW**



**SIDE VIEW**



**BACK VIEW**

RSUB 101 REV. C

**A.G.A. CERTIFIED RATINGS & CAPACITIES**

<b>Fuel Type</b>	Natural/Propane Gas	<b>Total FLA</b>	21*
<b>Input BTU/hr.</b>	1,750,000 / 513 kW	<b>Min. Gas Pressure Required</b>	2" W.C.**
<b>Output BTU/hr.</b>	1,662,500 / 487 kW	<b>Max. Gas Pressure Allowed</b>	14" W.C.
<b>Electrical Requirements</b>	(L1,L2,NEU,GND) 208-240VAC/1 ph/60 hz	<b>Operating Weight</b>	1059 lbs. / 481 kg.

**TEMPERATURE RISE / PRESSURE DROP**

25° F / 13.9° C		30° F / 16.7° C	
Flow Rate	Total Loss***	Flow Rate	Total Loss***
GPM L/s	Ft kPa	GPM L/s	Ft kPa
121.8 7.7	14.7 43.9	101.5 6.4	10.6 31.7

\*\*\*Includes primary, secondary, mixing valve and piping.

**BOILER TRIM & CONTROLS**

<b>Main Gas Valve</b>	Dungs DMV-SE512/11	<b>Manual Pilot Valve</b>	Honeywell V8046C
<b>Firing Valve</b>	Honeywell B200T1058 1 1/2"	<b>Air Switch</b>	Cleveland RSS-495
<b>Ignition Control</b>	Honeywell RM7895C	<b>Blower Motor</b>	Fasco 1 hp
<b>Operating Control</b>	HeatNet™	<b>Relief Valve - CW</b>	3/4" x 3/4" set @ 125 psi
<b>High Limit</b>	Jumo	<b>Relief Valve - CB</b>	1" x 1 1/4" set @ 50 psi
<b>Main Ball Valve</b>	1 1/2"	<b>Flow Switch</b>	IFS-1
<b>Pilot Cock</b>	1/4" Honeywell B528	<b>Solenoid Valve w/ Reg</b>	CV100
<b>Economizer</b>	RBI-2000	<b>Circulator</b>	TACO 1935 (1 hp) - FLA 14
<b>Mixing Valve</b>	2 1/2"	<b>By-Pass Piping</b>	2 1/2"

**A.S.M.E.**

<b>ASME Sect IV Htg Surface</b>	188.57 Sq. Ft. / 17.52 Sq. M.	<b>Design Data</b>	Max. 160 psig & 250° F
<b>Water Volume</b>	5.3 gal. / 20.06 l (liters)	<b>Secondary Heat Exchanger</b>	125 psi
<b>Water Volume Secondary HX</b>	7.07 gal. / 26.76 l (liters)		

**RECOVERY CAPACITY**

40°F	22° C	60°F	33° C	80°F	44° C	100°F	56° C	120°F	67° C	140°F	78° C
4989	18,887	3326	12,592	2495	9444	1996	7555	1663	6296	1426	5396

<b>REP FIRM</b>	_____	<p><b>FUTERA FUSION 1750</b></p> <p>Category IV Appliance</p> <p>(see Installation and Operation Manual for venting information)</p> <p><b>RBI</b>® A Division of Mestek, Inc. Westfield, MA 01085 (413) 568-9571</p>
<b>SUBMITTED BY</b>	_____	
<b>JOB NAME</b>	_____	
<b>ARCHITECT</b>	_____	
<b>ENGINEER</b>	_____	
<b>CONTRACTOR</b>	_____	
<b>DATE</b>	_____	

SFTF-1750-3

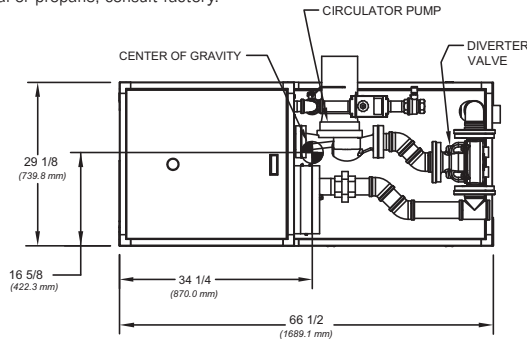
**CODE OPTIONS**

<b>CSD-1</b>	Manual Reset LWCO
<b>Kentucky</b>	200° F Maximum Operating Control and High Limit

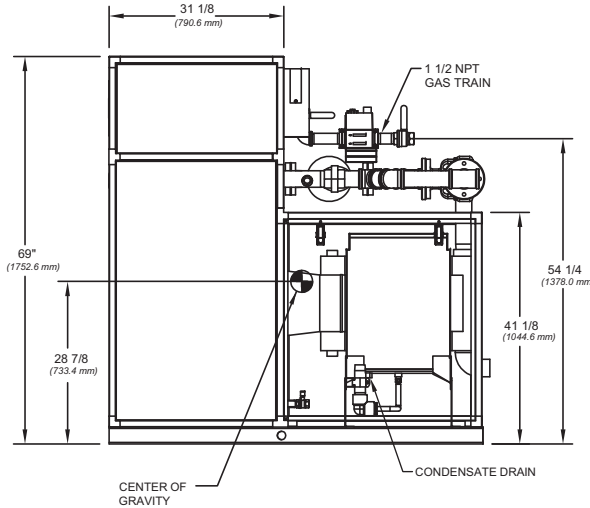
**NOTE:** Dimensions are approximate and should not be used to "rough-in" equipment.

\* Includes pump

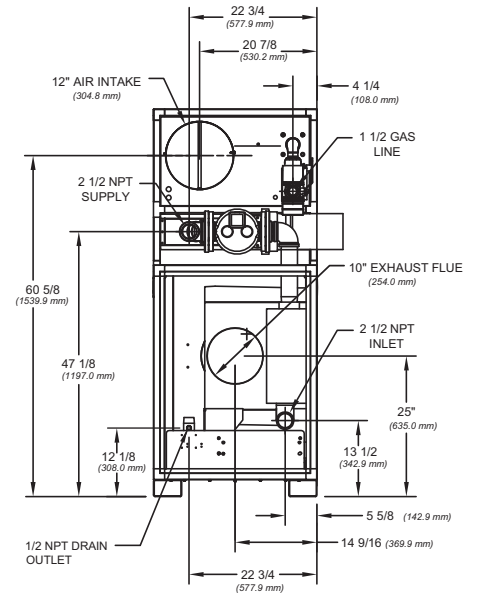
\*\* For incoming gas pressures lower than 2" W.C. natural or propane, consult factory.



**TOP VIEW**



**SIDE VIEW**



**BACK VIEW**

RSUB 102 REV. C

**A.G.A. CERTIFIED RATINGS & CAPACITIES**

<b>Fuel Type</b>	Natural/Propane Gas	<b>Total FLA</b>	23*
<b>Input BTU/hr.</b>	1,999,000 / 586 kW	<b>Min. Gas Pressure Required</b>	2" W.C.**
<b>Output BTU/hr.</b>	1,899,050 / 556 kW	<b>Max. Gas Pressure Allowed</b>	14" W.C.
<b>Electrical Requirements</b>	(L1,L2,NEU,GND) 208-240VAC/1 ph/60 hz	<b>Operating Weight</b>	1139 lbs. / 517 kg.

**TEMPERATURE RISE / PRESSURE DROP**

30° F / 16.7° C			
Flow Rate		Total Loss***	
GPM	L/s	Ft	kPa
116.0	7.3	13.8	41.2

\*\*\*Includes primary, secondary, mixing valve and piping.

**BOILER TRIM & CONTROLS**

<b>Main Gas Valve</b>	Dungs DMV-SE512/11	<b>Manual Pilot Valve</b>	Honeywell V8046C
<b>Firing Valve</b>	Honeywell B200T1058 1 1/2"	<b>Air Switch</b>	Cleveland RSS-495
<b>Ignition Control</b>	Honeywell RM7895C	<b>Blower Motor</b>	Fasco 1 hp
<b>Operating Control</b>	HeatNet™	<b>Relief Valve - CW</b>	3/4" x 3/4" set @ 125 psi
<b>High Limit</b>	Jumo	<b>Relief Valve - CB</b>	1" x 1 1/4" set @ 50 psi
<b>Main Ball Valve</b>	1 1/2"	<b>Flow Switch</b>	IFS-1
<b>Pilot Cock</b>	1/4" Honeywell B528	<b>Solenoid Valve w/ Reg</b>	CV100
<b>Economizer</b>	RBI-2000	<b>Circulator</b>	TACO 1935 (1 1/2 hp) - FLA 15
<b>Mixing Valve</b>	2 1/2"	<b>By-Pass Piping</b>	2 1/2"

**RECOVERY CAPACITY**

40°F	22° C	60°F	33° C	80°F	44° C	100°F	56° C	120°F	67° C	140°F	78° C
5,699	21,575	3,800	14,383	2,850	10,787	2,280	8,630	1,900	7,192	1,628	6,164

**A.S.M.E.**

<b>ASME Sect IV Htg Surface</b>	215.98 Sq. Ft. / 20.06 Sq. M.	<b>Design Data</b>	Max. 160 psig & 250° F
<b>Water Volume</b>	5.7 gal. / 21.58 l (liters)	<b>Secondary Heat Exchanger</b>	125 psi
<b>Water Volume Secondary HX</b>	7.07 gal. / 26.76 l (liters)		

<b>REP FIRM</b>	_____	 <p><b>Category IV Appliance</b> (see Installation and Operation Manual for venting information)</p>  <p>® A Division of Mestek, Inc. Westfield, MA 01085 (413) 568-9571</p>
<b>SUBMITTED BY</b>	_____	
<b>JOB NAME</b>	_____	
<b>ARCHITECT</b>	_____	
<b>ENGINEER</b>	_____	
<b>CONTRACTOR</b>	_____	
<b>DATE</b>	_____	

SFTF-2000-3