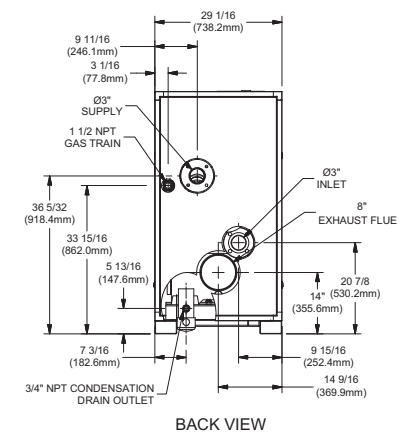
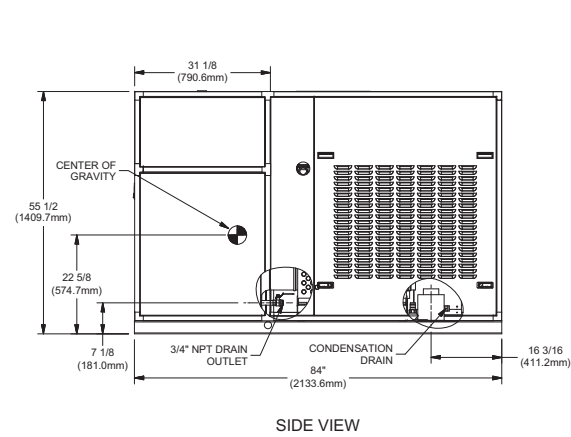
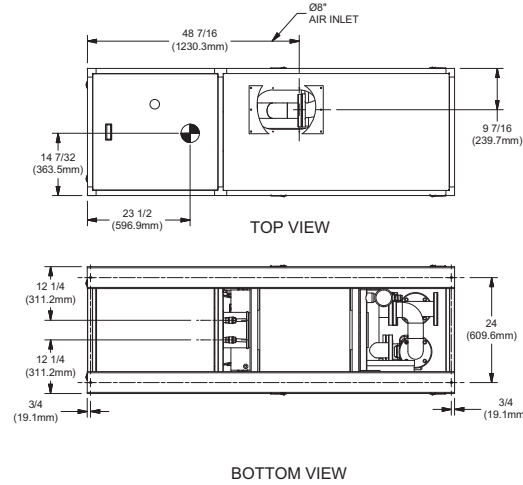


**NOTE:** Dimensions are approximate and should not be used to "rough-in" equipment.

\* Includes pump

\*\* For incoming gas pressures lower than 3.5" W.C. natural or propane, consult factory.



RSUB-140

**A.G.A. CERTIFIED RATINGS & CAPACITIES**

<b>Fuel Type</b>	Natural/Propane Gas	<b>Total FLA</b>	27.5*
<b>Input BTU/hr.</b>	2,500,000 / 733 kW	<b>Min. Gas Pressure Required</b>	3.5" W.C.**
<b>Output BTU/hr.</b>	2,350,000 / 689 kW	<b>Max. Gas Pressure Allowed</b>	14" W.C.
<b>Electrical Requirements</b>	208-230 VAC / 1PH / 60Hz	<b>Operating Weight</b>	2,400 lbs / 1,089 Kg

**TEMPERATURE RISE / PRESSURE DROP**

25° F / 13.9° C			
Flow Rate		Total Loss***	
GPM	L/s	Ft	kPa
174.0	10.9	25.4	74.9

\*\*\*Includes primary, secondary, mixing valve and piping.

**BOILER TRIM & CONTROLS**

<b>Main Gas Valve</b>	Dungs MBC 2500	<b>Manual Pilot Valve</b>	Honeywell V8046C
<b>Firing Valve</b>	Honeywell B200T1058 1 1/2"	<b>Air Switch</b>	HUBA
<b>Ignition Control</b>	Honeywell RM7895C	<b>Blower Motor</b>	American Fan 3HP - FLA 9.5
<b>Operating Control</b>	HeatNet™	<b>Relief Valve - CB</b>	1" x 1 1/4" set @ 50 psi
<b>High Limit</b>	Jumo	<b>Flow Switch</b>	ITT FS8W
<b>Main Ball Valve</b>	1 1/2"	<b>Solenoid Valve w/ Reg</b>	CV100
<b>Pilot Cock</b>	1/4" Honeywell B528	<b>Circulator</b>	B&G Series 80 (3HP) - FLA 17
<b>Economizer</b>	RBI-3000	<b>By-Pass Piping</b>	3"
<b>Mixing Valve</b>	3"		

**RECOVERY CAPACITY**

60° F	33° C	80° F	44° C	100° F	56° C	120° F	67° C	140° F	78° C
4,700	17,791	3,525	13,344	2,820	10,675	2,350	8,896	2,014	7,624

**A.S.M.E.**

<b>ASME Sect IV Htg Surface</b>	267.5 Sq Ft / 24.85 Sq M	<b>Design Data</b>	Max. 160 psig & 250° F
<b>Water Volume</b>	12.1 gal / 42.80 l (liters)	<b>Secondary Heat Exchanger</b>	125 psi
<b>Water Volume Secondary HX</b>	11.5 gal / 43.53 l (liters)		

**REP FIRM** \_\_\_\_\_

**SUBMITTED BY** \_\_\_\_\_

**JOB NAME** \_\_\_\_\_

**ARCHITECT** \_\_\_\_\_

**ENGINEER** \_\_\_\_\_

**CONTRACTOR** \_\_\_\_\_

**DATE** \_\_\_\_\_

**FUSION XLF 2500**

**Category IV Appliance**

(see Installation and Operation Manual for venting information)

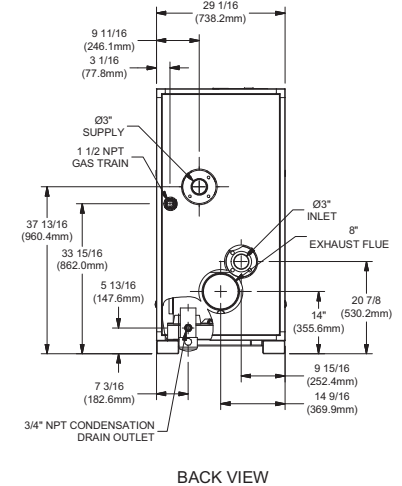
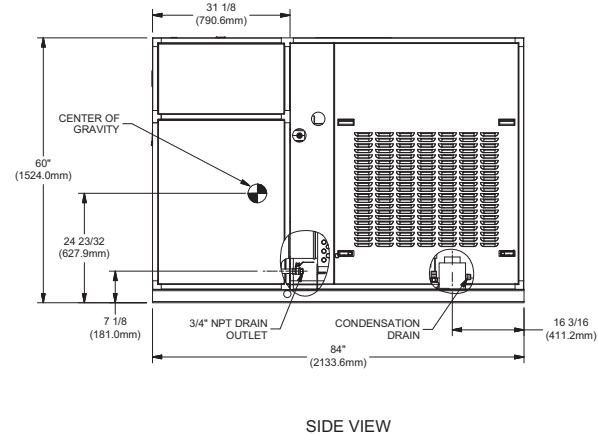
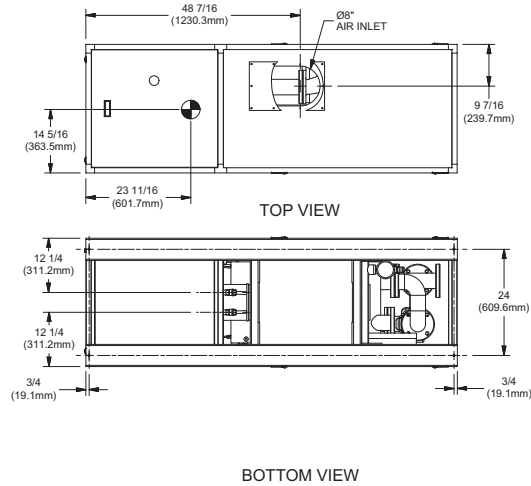
® A Division of Mestek, Inc.  
Westfield, MA 01085  
(413) 568-9571

SFTFX-2500-1

**NOTE:** Dimensions are approximate and should not be used to "rough-in" equipment.

\* Includes pump

\*\* For incoming gas pressures lower than 3.5" W.C. natural or propane, consult factory.



RSUB-141

**A.G.A. CERTIFIED RATINGS & CAPACITIES**

<b>Fuel Type</b>	Natural/Propane Gas	<b>Total FLA</b>	27.5*
<b>Input BTU/hr.</b>	3,000,000 / 879 kW	<b>Min. Gas Pressure Required</b>	3.5" W.C.**
<b>Output BTU/hr.</b>	2,820,000 / 826 kW	<b>Max. Gas Pressure Allowed</b>	14" W.C.
<b>Electrical Requirements</b>	208-230 VAC / 1PH / 60Hz	<b>Operating Weight</b>	2,600 lbs / 1,179 Kg

**TEMPERATURE RISE / PRESSURE DROP**

30° F / 16.7° C			
Flow Rate		Total Loss***	
GPM	L/s	Ft	kPa
174.0	10.9	23.4	69.1

\*\*\*Includes primary, secondary, mixing valve and piping.

**BOILER TRIM & CONTROLS**

<b>Main Gas Valve</b>	Dungs MBC 2500	<b>Manual Pilot Valve</b>	Honeywell V8046C
<b>Firing Valve</b>	Honeywell B200T1058 2"	<b>Air Switch</b>	HUBA
<b>Ignition Control</b>	Honeywell RM7895C	<b>Blower Motor</b>	American Fan 3HP - FLA 9.5
<b>Operating Control</b>	HeatNet™	<b>Relief Valve - CB</b>	1 1/4" x 1 1/2" set @ 50 psi
<b>High Limit</b>	Jumo	<b>Flow Switch</b>	ITT FS8W
<b>Main Ball Valve</b>	2"	<b>Solenoid Valve w/ Reg</b>	CV100
<b>Pilot Cock</b>	1/4" Honeywell B528	<b>Circulator</b>	B&G Series 80 (3HP) - FLA 17
<b>Economizer</b>	RBI-3000	<b>By-Pass Piping</b>	3"
<b>Mixing Valve</b>	3"		

**A.S.M.E.**

<b>ASME Sect IV Htg Surface</b>	325.0 Sq Ft / 30.19 Sq M	<b>Design Data</b>	Max. 160 psig & 250° F
<b>Water Volume</b>	12.8 gal / 48.45 l (liters)	<b>Secondary Heat Exchanger</b>	125 psi
<b>Water Volume Secondary HX</b>	11.5 gal / 43.53 l (liters)		

**RECOVERY CAPACITY**

60° F	33° C	80° F	44° C	100° F	56° C	120° F	67° C	140° F	78° C
5,640	21,350	4,230	16,012	3,384	12,810	2,820	10,675	2,417	9,149

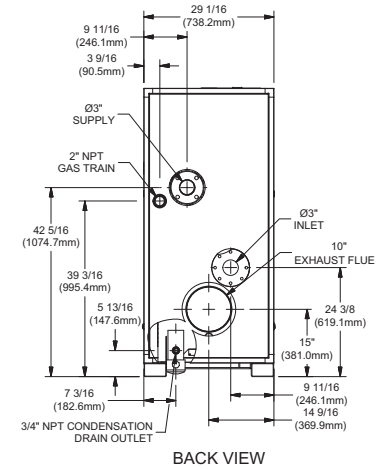
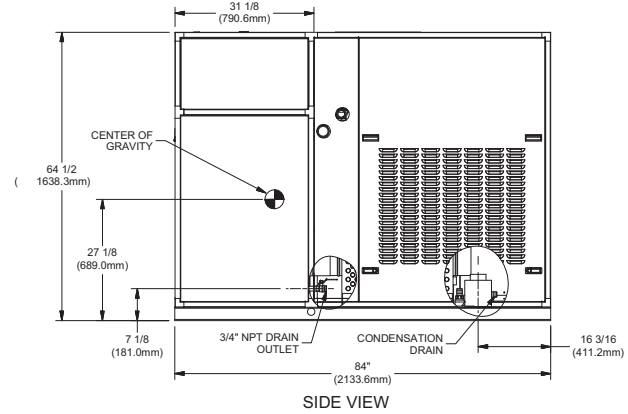
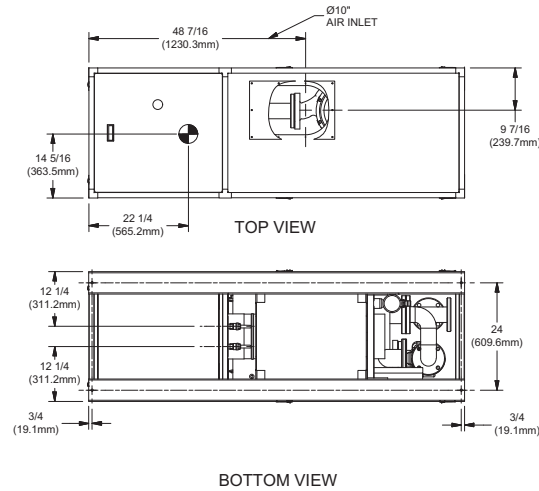
<b>REP FIRM</b>	_____	<h1>FUSION XLF 3000</h1> <p>Category IV Appliance</p> <p>(see Installation and Operation Manual for venting information)</p> <p>A Division of Mestek, Inc. Westfield, MA 01085 (413) 568-9571</p>
<b>SUBMITTED BY</b>	_____	
<b>JOB NAME</b>	_____	
<b>ARCHITECT</b>	_____	
<b>ENGINEER</b>	_____	
<b>CONTRACTOR</b>	_____	
<b>DATE</b>	_____	

SFTFX-3000-1

**NOTE:** Dimensions are approximate and should not be used to "rough-in" equipment.

\* Includes pump

\*\* For incoming gas pressures lower than 3.5" W.C. natural or propane, consult factory.



RSUB-142

### A.G.A. CERTIFIED RATINGS & CAPACITIES

<b>Fuel Type</b>	Natural/Propane Gas	<b>Total FLA</b>	19.1*
<b>Input BTU/hr.</b>	3,500,000 / 1,026 kW	<b>Min. Gas Pressure Required</b>	3.5" W.C.**
<b>Output BTU/hr.</b>	3,290,000 / 964 kW	<b>Max. Gas Pressure Allowed</b>	14" W.C.
<b>Electrical Requirements</b>	208-230 VAC / 3PH / 60Hz	<b>Operating Weight</b>	2,800 lbs / 1,270 Kg

### TEMPERATURE RISE / PRESSURE DROP

30° F / 16.7° C			
Flow Rate		Total Loss***	
GPM	L/s	Ft	kPa
203.0	12.8	29.7	87.5

\*\*\*Includes primary, secondary, mixing valve and piping.

### BOILER TRIM & CONTROLS

<b>Main Gas Valve</b>	Dungs MBC 4000	<b>Manual Pilot Valve</b>	Honeywell V8046C
<b>Firing Valve</b>	Honeywell B200T1058 2"	<b>Air Switch</b>	HUBA
<b>Ignition Control</b>	Honeywell RM7895C	<b>Blower Motor</b>	American Fan 5HP - FLA 9
<b>Operating Control</b>	HeatNet™	<b>Relief Valve - CB</b>	1 1/4" x 1 1/2" set @ 50 psi
<b>High Limit</b>	Jumo	<b>Flow Switch</b>	ITT FS8W
<b>Main Ball Valve</b>	2"	<b>Solenoid Valve w/ Reg</b>	CV100
<b>Pilot Cock</b>	1/4" Honeywell B528	<b>Circulator</b>	B&G Series 80 (3HP) - FLA 9.6
<b>Economizer</b>	RBI-4000	<b>By-Pass Piping</b>	3"
<b>Mixing Valve</b>	3"		

### A.S.M.E.

<b>ASME Sect IV Htg Surface</b>	377.0 Sq Ft / 35.02 Sq M	<b>Design Data</b>	Max. 160 psig & 250° F
<b>Water Volume</b>	13.4 gal / 50.72 l (liters)	<b>Secondary Heat Exchanger</b>	125 psi
<b>Water Volume Secondary HX</b>	16.2 gal / 61.32 l (liters)		

### RECOVERY CAPACITY

60° F	33° C	80° F	44° C	100° F	56° C	120° F	67° C	140° F	78° C
6,580	24,908	4,935	18,681	3,948	14,945	3,290	12,454	2,820	10,675

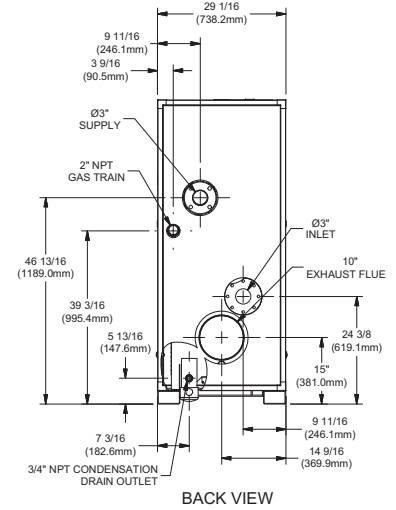
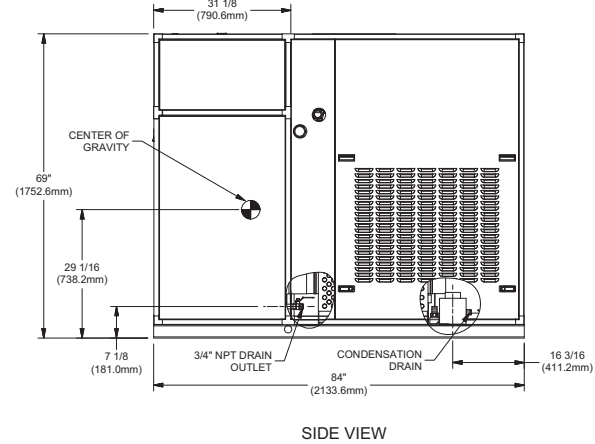
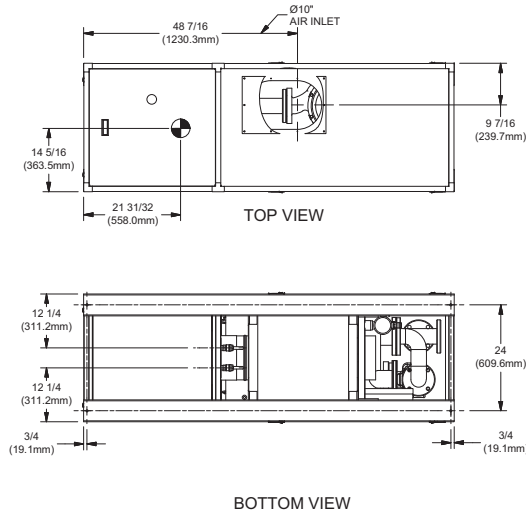
<b>REP FIRM</b>	_____	<b>FUSION XLF 3500</b> Category IV Appliance (see Installation and Operation Manual for venting information)
<b>SUBMITTED BY</b>	_____	
<b>JOB NAME</b>	_____	
<b>ARCHITECT</b>	_____	
<b>ENGINEER</b>	_____	
<b>CONTRACTOR</b>	_____	<b>RBI</b> ® A Division of Mestek, Inc. Westfield, MA 01085 (413) 568-9571
<b>DATE</b>	_____	

SFTFX-3500-1

**NOTE:** Dimensions are approximate and should not be used to "rough-in" equipment.

\* Includes pump

\*\* For incoming gas pressures lower than 3.5" W.C. natural or propane, consult factory.



RSUB 143

**A.G.A. CERTIFIED RATINGS & CAPACITIES**

<b>Fuel Type</b>	Natural/Propane Gas	<b>Total FLA</b>	24.7*
<b>Input BTU/hr.</b>	4,000,000 / 1172 kW	<b>Min. Gas Pressure Required</b>	3.5" W.C.**
<b>Output BTU/hr.</b>	3,760,000 / 1102 kW	<b>Max. Gas Pressure Allowed</b>	14" W.C.
<b>Electrical Requirements</b>	208-230VAC / 3PH / 60 Hz	<b>Operating Weight</b>	2,900 lbs / 1,315 Kg

**TEMPERATURE RISE / PRESSURE DROP**

30° F / 16.7° C			
Flow Rate		Total Loss***	
GPM	L/s	Ft	kPa
232.0	14.6	36.9	108.8

\*\*\*Includes primary, secondary, mixing valve and piping.

**BOILER TRIM & CONTROLS**

<b>Main Gas Valve</b>	Dungs MBC 4000	<b>Manual Pilot Valve</b>	Honeywell V8046C
<b>Firing Valve</b>	Honeywell B200T1058 2"	<b>Air Switch</b>	HUBA
<b>Ignition Control</b>	Honeywell RM7895C	<b>Blower Motor</b>	American Fan 5 hp - FLA 9
<b>Operating Control</b>	HeatNet™	<b>Relief Valve - CB</b>	1 1/2" x 1 1/2" set @ 50 psi
<b>High Limit</b>	Jumo	<b>Flow Switch</b>	ITT FS8W
<b>Main Ball Valve</b>	2"	<b>Solenoid Valve w/ Reg</b>	CV100
<b>Pilot Cock</b>	1/4" Honeywell B528	<b>Circulator</b>	B&G Series 80 (5 hp) - FLA 15.2
<b>Economizer</b>	RBI-4000	<b>By-Pass Piping</b>	3"
<b>Mixing Valve</b>	3"		

**A.S.M.E.**

<b>ASME Sect IV Htg Surface</b>	435.0 Sq Ft / 40.41 Sq M	<b>Design Data</b>	Max. 160 psig & 250° F
<b>Water Volume</b>	14.0 gal / 53.00 l (liters)	<b>Secondary Heat Exchanger</b>	125 psi
<b>Water Volume Secondary HX</b>	16.2 gal / 61.32 l (liters)		

**RECOVERY CAPACITY**

60° F	33° C	80° F	44° C	100° F	56° C	120° F	67° C	140° F	78° C
7,520	28,467	5,640	21,351	4,512	17,080	3,760	14,234	3,223	12,200

**REP FIRM** \_\_\_\_\_  
**SUBMITTED BY** \_\_\_\_\_  
**JOB NAME** \_\_\_\_\_  
**ARCHITECT** \_\_\_\_\_  
**ENGINEER** \_\_\_\_\_  
**CONTRACTOR** \_\_\_\_\_  
**DATE** \_\_\_\_\_

**FUSION XLF 4000**

**Category IV Appliance**  
(see Installation and Operation Manual for venting information)

**RBI**® A Division of Mestek, Inc.  
Westfield, MA 01085  
(413) 568-9571

SFTFX-4000-1