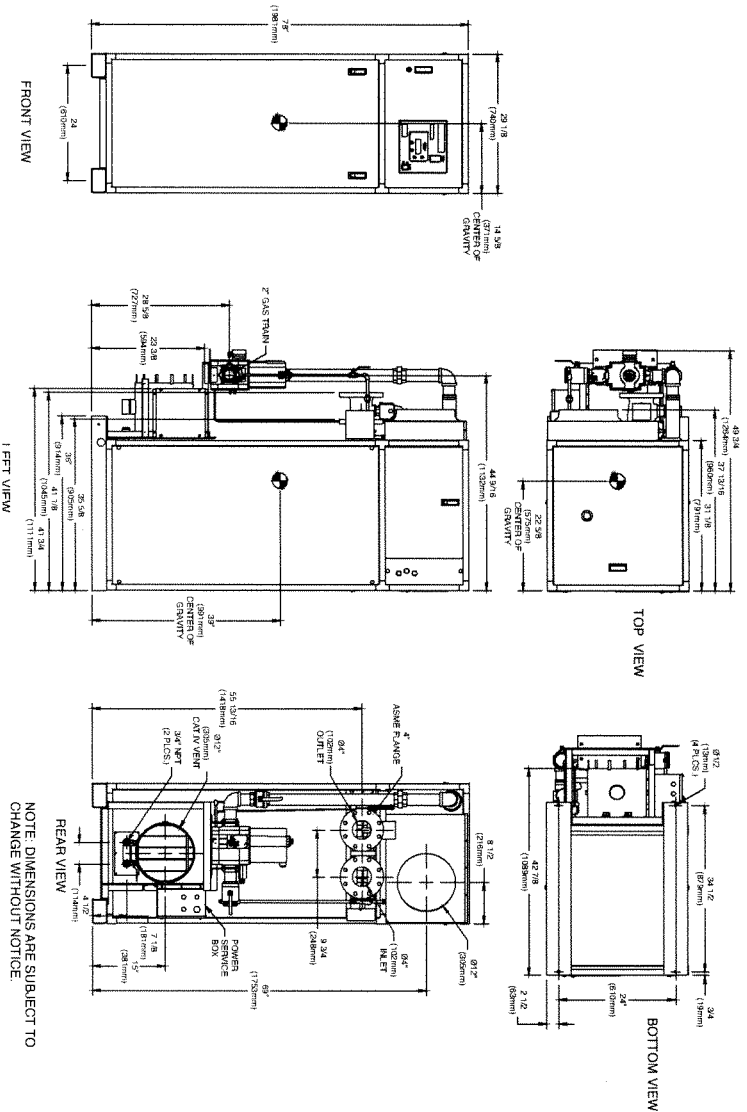


NOTE: Dimensions are approximate and should not be used to "rough-in" equipment.
 * Add circulator amps.
 **For incoming gas pressures lower than 3.5 WC natural, consult factory.

INDOOR UNIT



RSUB 148

AGA CERTIFIED RATINGS & CAPACITIES

Fuel Type	Natural	Boiler FLA	24.7* @ 230V NEC
Input BTU/hr.	5,000,000 / 1,465 kW	Min. Gas Pressure Required	3.5" WC**
Output BTU/hr.	4,290,000 / 1,257 kW	Max. Gas Pressure Allowed	14" WC
Electrical Requirements	(L1, L2, L3 GND) 208-230 VAC/3 ph/60 Hz	Operating Weight	1,684 lbs. / 765 kgs

BOILER TRIM & CONTROLS

Main Gas Valve Body	Dungs MBC 4000	High Limit (Manual Reset)	Jumo
Firing Valve	Honeywell B200T1096 2"	High Limit (Auto Reset)	Jumo
Main Bail Valve	2"	Blocked Flue Switch	HUBA
Manual Pilot Valve	1/4" Honeywell B528	Air Switch	HUBA
Solenoid Valve w/Reg	CVI100	Blower Motor	American Fan 5 HP - FLA 14
Ignition Control	Honeywell RM/7895C	Relief Valve - MB	1-1/2" x 2" set @ 50 psi
Operating Control	HeatNet™	Relief Valve - MW	1" x 1" set @ 125 psi
		Flow Switch	ITT FSBW

ASME

ASME Sect. IV Htg Surface	544.3 Sq Ft / 50.56 Sq M	Design Data	Max. 160 psig & 250°F
Water Volume	15.6 gal / 59.12 l (liters)		

TEMPERATURE RISE / PRESSURE DROP

30°F / 16.7°C		35°F / 19.4°C	
Flow Rate	Pressure Drop	Flow Rate	Pressure Drop
GPW / L/s	Ft / Pa	GPW / L/s	Ft / Pa
290* / 18.3	21.20 / 62.5	248.6 / 15.7	19.7 / 58.0

RECOVERY CAPACITY

40°F	22°C	60°F	33°C	80°F	44°C	100°F	56°C	120°F	67°C	140°F	78°C
1,288	48,738	8,583	32,492	6,438	24,369	5,150	19,495	4,292	16,246	3,679	13,925

*Flow exceeds recommended maximum use a greater temperature rise or consult manufacturer. Cupronickel heat exchanger should be considered.

REP FIRM

SUBMITTED BY _____

JOB NAME

ARCHITECT _____

ENGINEER

CONTRACTOR _____

DATE

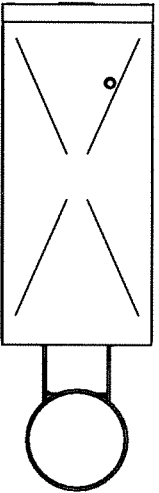
FUTERA XLF 5000

Category II or Category IV Appliance
 (see Installation and Operation Manual for venting information)

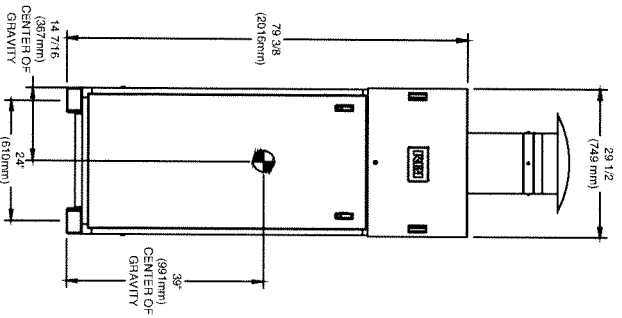


® A Division of Westek, Inc.
 Westfield, MA 01085
 (413) 568-9571

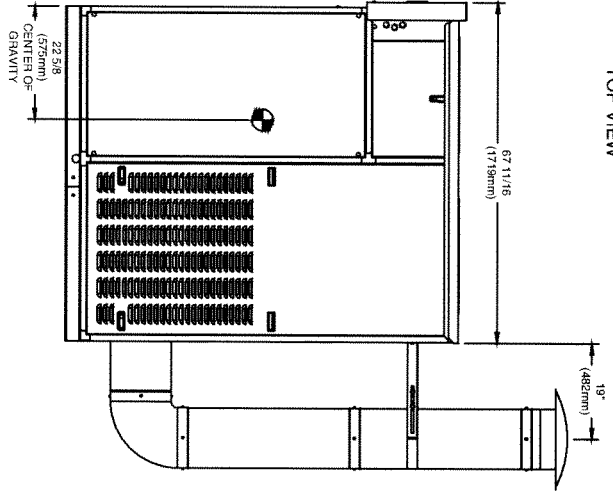
OUTDOOR UNIT



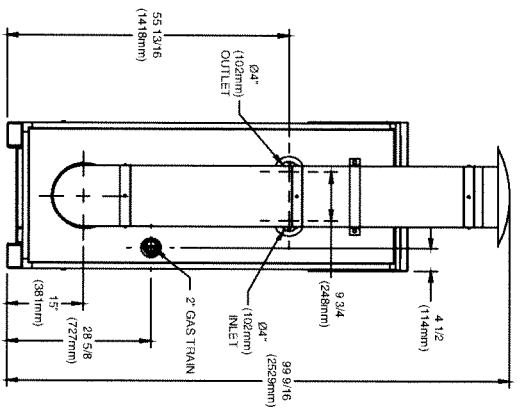
TOP VIEW



FRONT VIEW



SIDE VIEW



BACK VIEW

NOTE: DIMENSIONS ARE SUBJECT TO CHANGE WITHOUT NOTICE.

FUTERA XLF 5000