

RSUB-1-A

**A.G.A. CERTIFIED RATINGS & CAPACITIES**

<b>Fuel Type</b>	Natural/Propane Gas	<b>Boiler FLA</b>	1*
<b>Input BTU/hr.</b>	100,000 / 29 kW	<b>Min. Gas Pressure Required</b>	5" W.C.**
<b>Output BTU/hr.</b>	82,000 / 24 kW	<b>Max. Gas Pressure Allowed</b>	14" W.C.
<b>Electrical Requirements</b>	120VAC / 1 ph / 60 hz	<b>Operating Weight</b>	151 lbs. / 69 kg.

**TEMPERATURE RISE / PRESSURE DROP**

10° F / 5.5° C			
Flow Rate		Pressure Drop	
GPM	L/s	Ft	kPa
16.4	1.0	0.05	0.1
16.4	1.0	0.34	1.0

**2 Pass**

**4 Pass**

**BOILER TRIM & CONTROLS**

<b>Gas Valve - CON</b>	Honeywell VR8300A 1/2"	<b>Ignition Control</b>	S8610M
<b>Gas Valve - INT</b>	Honeywell VR8304M 1/2"	<b>Relief Valve - SW</b>	3/4" x 3/4" set @ 125 psi
<b>Operating Control (SB)</b>	Jumo EMF-1 - Std Pilot/On/Off	<b>Relief Valve - SB</b>	3/4" x 3/4" set @ 30 psi
<b>Operating Control (SW)</b>	Jumo EMF-1 - Std Pilot/On/Off	<b>High Limit (SB)</b>	Jumo EMF-1
<b>Operating Control (SB/SW)</b>	Honeywell L6008G - 2 Stage	<b>High Limit (SW)</b>	Jumo EMF-1

**RECOVERY CAPACITY**

40°F	22° C	60°F	33° C	80°F	44° C	100°F	56° C	120°F	67° C	140°F	78° C
246	932	164	621	123	466	98	373	82	311	70	266

**A.S.M.E.**

<b>ASME Sect IV Htg Surface</b>	19.1 Sq. Ft. / 1.77 Sq. M.	<b>Design Data</b>	Max. 160 psig & 250° F
---------------------------------	----------------------------	--------------------	------------------------

**NOTE:** Dimensions are approximate and should not be used to "rough-in" equipment.

\* Add circulator amps.

\*\* For incoming gas pressures lower than 5" W.C. natural or 12" W.C. propane, consult factory.

REP FIRM \_\_\_\_\_

SUBMITTED BY \_\_\_\_\_

JOB NAME \_\_\_\_\_

ARCHITECT \_\_\_\_\_

ENGINEER \_\_\_\_\_

CONTRACTOR \_\_\_\_\_

DATE \_\_\_\_\_

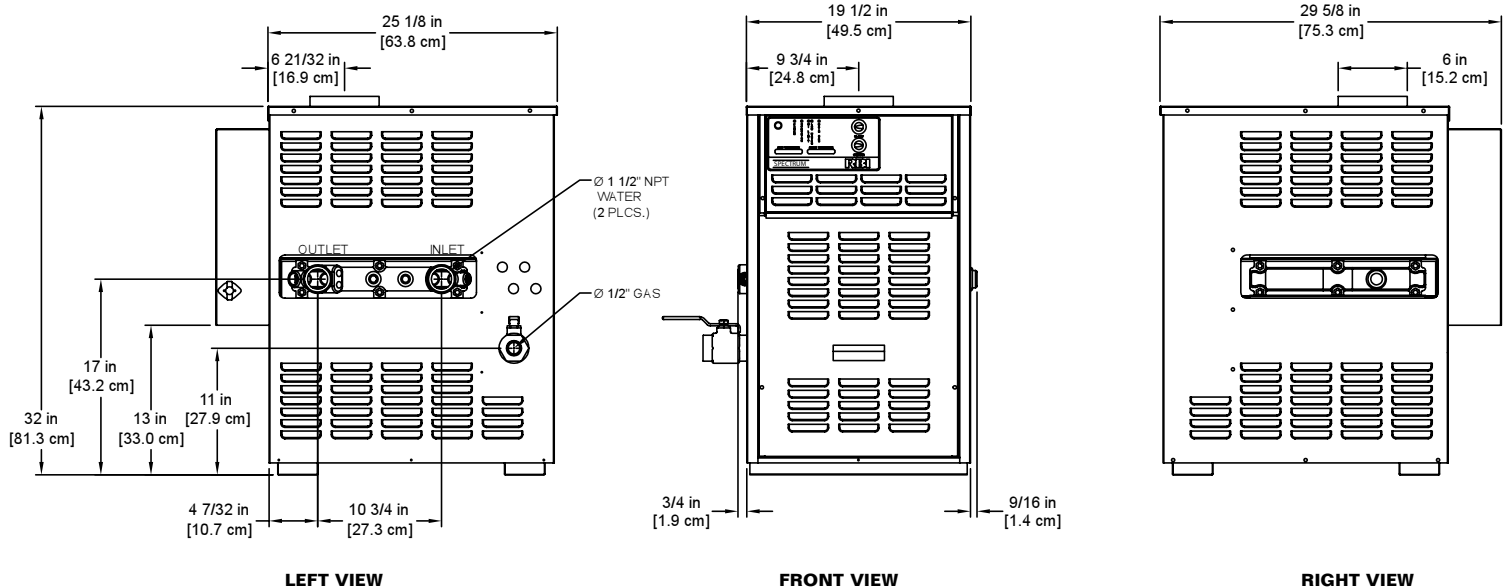
**SPECTRUM 100**

**Category I Appliance**

Must be vented into a negative pressure vent system.



A Division of Mestek, Inc.  
Westfield, MA 01085  
(413) 568-9571



RSUB-2-A

**A.G.A. CERTIFIED RATINGS & CAPACITIES**

<b>Fuel Type</b>	Natural/Propane Gas	<b>Boiler FLA</b>	1*
<b>Input BTU/hr.</b>	150,000 / 44 kW	<b>Min. Gas Pressure Required</b>	5" W.C.**
<b>Output BTU/hr.</b>	123,000 / 36 kW	<b>Max. Gas Pressure Allowed</b>	14" W.C.
<b>Electrical Requirements</b>	120VAC / 1 ph / 60 hz	<b>Operating Weight</b>	171 lbs. / 77 kg.

**TEMPERATURE RISE / PRESSURE DROP**

10° F / 5.5° C			
Flow Rate		Pressure Drop	
GPM	L/s	Ft	kPa
24.6	1.6	0.13	0.4
24.6	1.6	0.94	2.8

**2 Pass**

**4 Pass**

**BOILER TRIM & CONTROLS**

<b>Gas Valve - CON</b>	Honeywell VR8300A 1/2"	<b>Ignition Control</b>	S8610M
<b>Gas Valve - INT</b>	Honeywell VR8304M 1/2"	<b>Relief Valve - SW</b>	3/4" x 3/4" set @ 125 psi
<b>Operating Control (SB)</b>	Jumo EMF-1 - Std Pilot/On/Off	<b>Relief Valve - SB</b>	3/4" x 3/4" set @ 30 psi
<b>Operating Control (SW)</b>	Jumo EMF-1 - Std Pilot/On/Off	<b>High Limit (SB)</b>	Jumo EMF-1
<b>Operating Control (SB/SW)</b>	Honeywell L6008G - 2 Stage	<b>High Limit (SW)</b>	Jumo EMF-1

**RECOVERY CAPACITY**

40°F	22° C	60°F	33° C	80°F	44° C	100°F	56° C	120°F	67° C	140°F	78° C
369	1397	246	932	185	699	148	559	123	466	105	399

**A.S.M.E.**

<b>ASME Sect IV Htg Surface</b>	25.0 Sq. Ft. / 2.32 Sq. M.	<b>Design Data</b>	Max. 160 psig & 250° F
---------------------------------	----------------------------	--------------------	------------------------

**NOTE:** Dimensions are approximate and should not be used to "rough-in" equipment.  
 \* Add circulator amps.  
 \*\* For incoming gas pressures lower than 5" W.C. natural or 12" W.C. propane, consult factory.

**REP FIRM** \_\_\_\_\_

**SUBMITTED BY** \_\_\_\_\_

**JOB NAME** \_\_\_\_\_

**ARCHITECT** \_\_\_\_\_

**ENGINEER** \_\_\_\_\_

**CONTRACTOR** \_\_\_\_\_

**DATE** \_\_\_\_\_

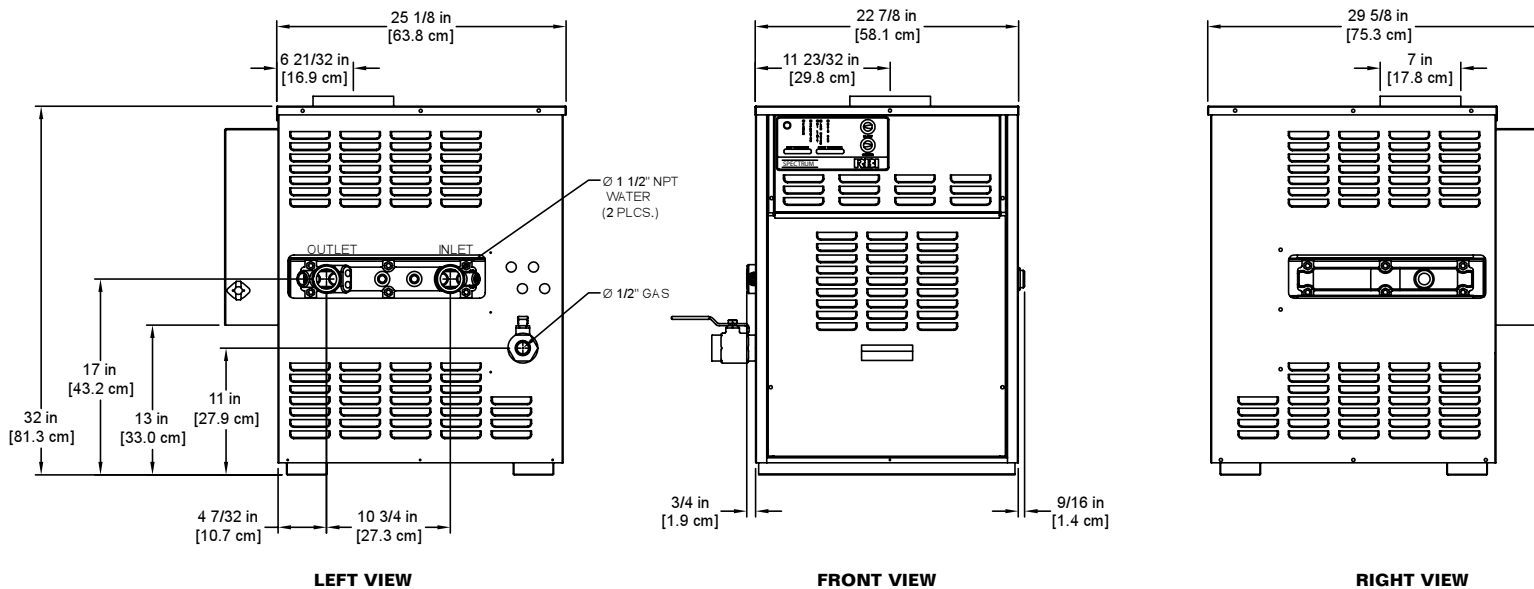
**SPECTRUM 150**

**Category I Appliance**

Must be vented into a negative pressure vent system.

**RBI**

A Division of Mestek, Inc.  
 Westfield, MA 01085  
 (413) 568-9571



RSUB-3-A

**A.G.A. CERTIFIED RATINGS & CAPACITIES**

<b>Fuel Type</b>	Natural/Propane Gas	<b>Boiler FLA</b>	1*
<b>Input BTU/hr.</b>	199,000 / 58 kW	<b>Min. Gas Pressure Required</b>	5" W.C.**
<b>Output BTU/hr.</b>	161,190 / 47 kW	<b>Max. Gas Pressure Allowed</b>	14" W.C.
<b>Electrical Requirements</b>	120VAC / 1 ph / 60 hz	<b>Operating Weight</b>	191 lbs. / 87 kg.

**TEMPERATURE RISE / PRESSURE DROP**

10° F / 5.5° C				20° F / 11.1° C				
Flow Rate		Pressure Drop		Flow Rate		Pressure Drop		
GPM	L/s	Ft	kPa	GPM	L/s	Ft	kPa	
32.4	2.0	0.27	0.8	16.2	1.0	0.07	0.2	<b>2 Pass</b>
32.4	2.0	1.92	5.7	16.2	1.0	0.53	1.6	<b>4 Pass</b>

**BOILER TRIM & CONTROLS**

<b>Gas Valve - CON</b>	Honeywell VR8300A 1/2"	<b>Ignition Control</b>	S8610M
<b>Gas Valve - INT</b>	Honeywell VR8304M 1/2"	<b>Relief Valve - SW</b>	3/4" x 3/4" set @ 125 psi
<b>Operating Control (SB)</b>	Jumo EMF-1 - Std Pilot/On/Off	<b>Relief Valve - SB</b>	3/4" x 3/4" set @ 30 psi
<b>Operating Control (SW)</b>	Jumo EMF-1 - Std Pilot/On/Off	<b>High Limit (SB)</b>	Jumo EMF-1
<b>Operating Control (SB/SW)</b>	Honeywell L6008G - 2 Stage	<b>High Limit (SW)</b>	Jumo EMF-1

**RECOVERY CAPACITY**

40°F	22° C	60°F	33° C	80°F	44° C	100°F	56° C	120°F	67° C	140°F	78° C
484	1831	323	1221	242	916	194	732	161	610	138	523

**A.S.M.E.**

<b>ASME Sect IV Htg Surface</b>	30.8 Sq. Ft. / 2.86 Sq. M.	<b>Design Data</b>	Max. 160 psig & 250° F
---------------------------------	----------------------------	--------------------	------------------------

**NOTE:** Dimensions are approximate and should not be used to "rough-in" equipment.

\* Add circulator amps.

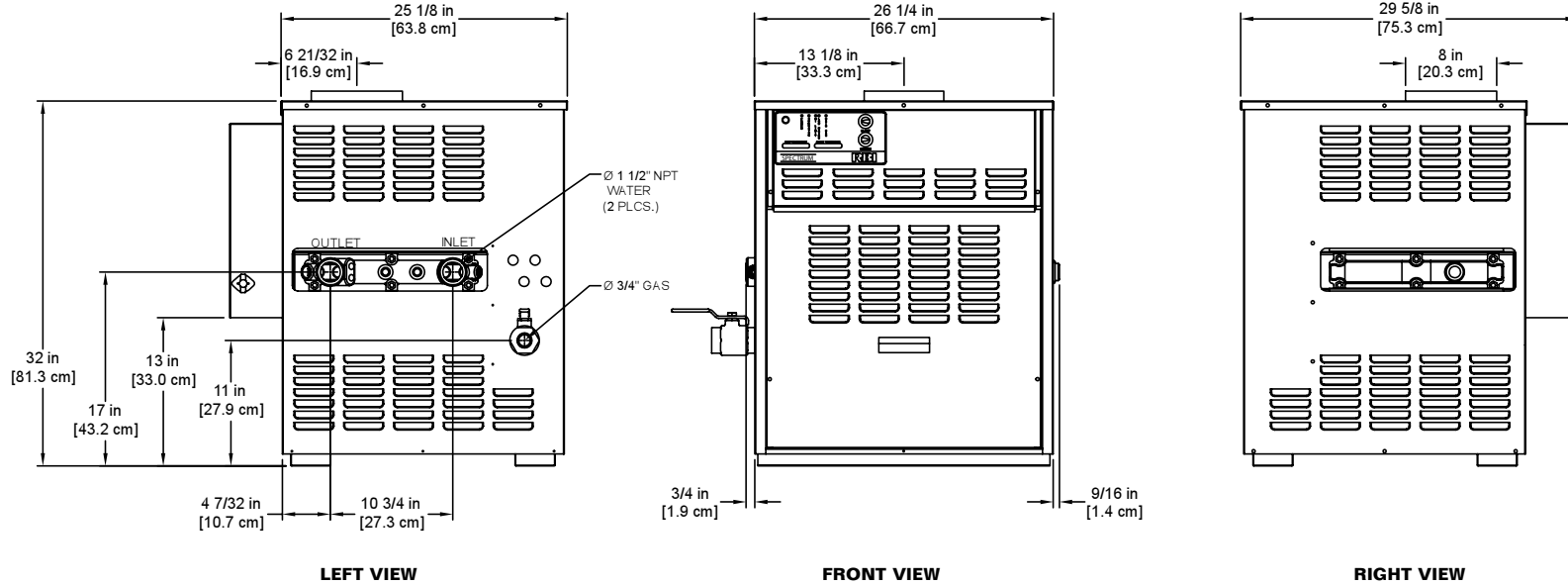
\*\* For incoming gas pressures lower than 5" W.C. natural or 12" W.C. propane, consult factory.

**REP FIRM** \_\_\_\_\_  
**SUBMITTED BY** \_\_\_\_\_  
**JOB NAME** \_\_\_\_\_  
**ARCHITECT** \_\_\_\_\_  
**ENGINEER** \_\_\_\_\_  
**CONTRACTOR** \_\_\_\_\_  
**DATE** \_\_\_\_\_

# SPECTRUM 200

**Category I Appliance**  
Must be vented into a negative pressure vent system.

A Division of Mestek, Inc.  
Westfield, MA 01085  
(413) 568-9571



RSUB-4-A

**A.G.A. CERTIFIED RATINGS & CAPACITIES**

<b>Fuel Type</b>	Natural/Propane Gas	<b>Boiler FLA</b>	1*
<b>Input BTU/hr.</b>	250,000 / 73 kW	<b>Min. Gas Pressure Required</b>	5" W.C.**
<b>Output BTU/hr.</b>	202,500 / 59 kW	<b>Max. Gas Pressure Allowed</b>	14" W.C.
<b>Electrical Requirements</b>	120VAC / 1 ph / 60 hz	<b>Operating Weight</b>	211 lbs. / 95 kg.

**TEMPERATURE RISE / PRESSURE DROP**

10° F / 5.5° C				20° F / 11.1° C				
Flow Rate		Pressure Drop		Flow Rate		Pressure Drop		
GPM	L/s	Ft	kPa	GPM	L/s	Ft	kPa	
40.5	2.6	0.48	1.4	20.3	1.3	0.13	0.4	<b>2 Pass</b>
40.5	2.6	3.46	10.2	20.3	1.3	0.96	2.8	<b>4 Pass</b>

**BOILER TRIM & CONTROLS**

<b>Gas Valve - CON</b>	Honeywell VR8300A 3/4"	<b>Ignition Control</b>	S8610M
<b>Gas Valve - INT</b>	Honeywell VR8304M 3/4"	<b>Relief Valve - SW</b>	3/4" x 3/4" set @ 125 psi
<b>Operating Control (SB)</b>	Jumo EMF-1 - Std Pilot/On/Off	<b>Relief Valve - SB</b>	3/4" x 3/4" set @ 30 psi
<b>Operating Control (SW)</b>	Jumo EMF-1 - Std Pilot/On/Off	<b>High Limit (SB)</b>	Honeywell L4008E1305
<b>Operating Control (SB/SW)</b>	Honeywell L6008G - 2 Stage	<b>High Limit (SW)</b>	Honeywell L4008E1313

**RECOVERY CAPACITY**

40°F	22° C	60°F	33° C	80°F	44° C	100°F	56° C	120°F	67° C	140°F	78° C
608	2301	405	1534	304	1150	243	920	203	767	174	657

**A.S.M.E.**

<b>ASME Sect IV Htg Surface</b>	36.7 Sq. Ft. / 3.41 Sq. M.	<b>Design Data</b>	Max. 160 psig & 250° F
---------------------------------	----------------------------	--------------------	------------------------

**NOTE:** Dimensions are approximate and should not be used to "rough-in" equipment.

\* Add circulator amps.

\*\* For incoming gas pressures lower than 5" W.C. natural or 12" W.C. propane, consult factory.

**REP FIRM** \_\_\_\_\_

**SUBMITTED BY** \_\_\_\_\_

**JOB NAME** \_\_\_\_\_

**ARCHITECT** \_\_\_\_\_

**ENGINEER** \_\_\_\_\_

**CONTRACTOR** \_\_\_\_\_

**DATE** \_\_\_\_\_

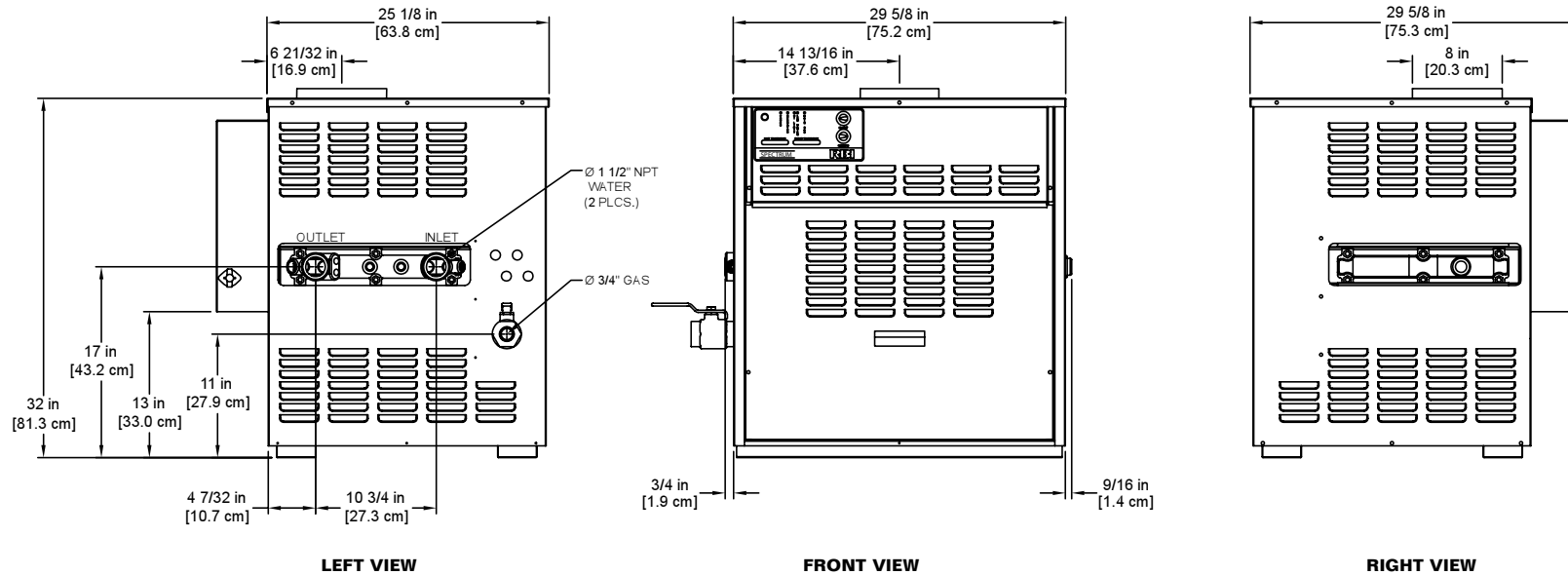
**SPECTRUM 250**

**Category I Appliance**

Must be vented into a negative pressure vent system.



A Division of Mestek, Inc.  
Westfield, MA 01085  
(413) 568-9571



RSUB-5-A

**A.G.A. CERTIFIED RATINGS & CAPACITIES**

<b>Fuel Type</b>	Natural/Propane Gas	<b>Boiler FLA</b>	1*
<b>Input BTU/hr.</b>	301,000 / 88 kW	<b>Min. Gas Pressure Required</b>	5" W.C.**
<b>Output BTU/hr.</b>	249,830 / 73 kW	<b>Max. Gas Pressure Allowed</b>	14" W.C.
<b>Electrical Requirements</b>	120VAC / 1 ph / 60 hz	<b>Operating Weight</b>	231 lbs. / 105 kg.

**TEMPERATURE RISE / PRESSURE DROP**

10° F / 5.5° C		20° F / 11.1° C		30° F / 16.7° C								
Flow Rate	Pressure Drop	Flow Rate	Pressure Drop	Flow Rate	Pressure Drop							
GPM	L/s	Ft	kPa	GPM	L/s	Ft	kPa	GPM	L/s	Ft	kPa	
49.8	3.1	0.82	2.4	24.9	1.6	0.23	0.7	16.6	1.0	0.10	0.3	<b>2 Pass</b>
49.8*	3.1	5.89	17.3	24.9	1.6	1.63	4.8	16.6	1.0	0.80	2.3	<b>4 Pass</b>

\*Flow exceeds recommended maximum use a greater temperature rise or consult manufacturer. Cupro-Nickel heat exchanger should be considered.

**BOILER TRIM & CONTROLS**

<b>Gas Valve - CON</b>	Honeywell VR8300A 3/4"	<b>Ignition Control</b>	S8610M
<b>Gas Valve - INT</b>	Honeywell VR8304M 3/4"	<b>Relief Valve - SW</b>	3/4" x 3/4" set @ 125 psi
<b>Operating Control (SB)</b>	Jumo EMF-1 - Std Pilot/On/Off	<b>Relief Valve - SB</b>	3/4" x 3/4" set @ 30 psi
<b>Operating Control (SW)</b>	Jumo EMF-1 - Std Pilot/On/Off	<b>High Limit (SB)</b>	Honeywell L4008E1305
<b>Operating Control (SB/SW)</b>	Honeywell L6008G - 2 Stage	<b>High Limit (SW)</b>	Honeywell L4008E1313

**RECOVERY CAPACITY**

40°F	22° C	60°F	33° C	80°F	44° C	100°F	56° C	120°F	67° C	140°F	78° C
750	2838	500	1892	375	1419	300	1135	250	946	214	811

**A.S.M.E.**

<b>ASME Sect IV Htg Surface</b>	42.5 Sq. Ft. / 3.95 Sq. M.	<b>Design Data</b>	Max. 160 psig & 250° F
---------------------------------	----------------------------	--------------------	------------------------

**NOTE:** Dimensions are approximate and should not be used to "rough-in" equipment.

\* Add circulator amps.

\*\* For incoming gas pressures lower than 5" W.C. natural or 12" W.C. propane, consult factory.

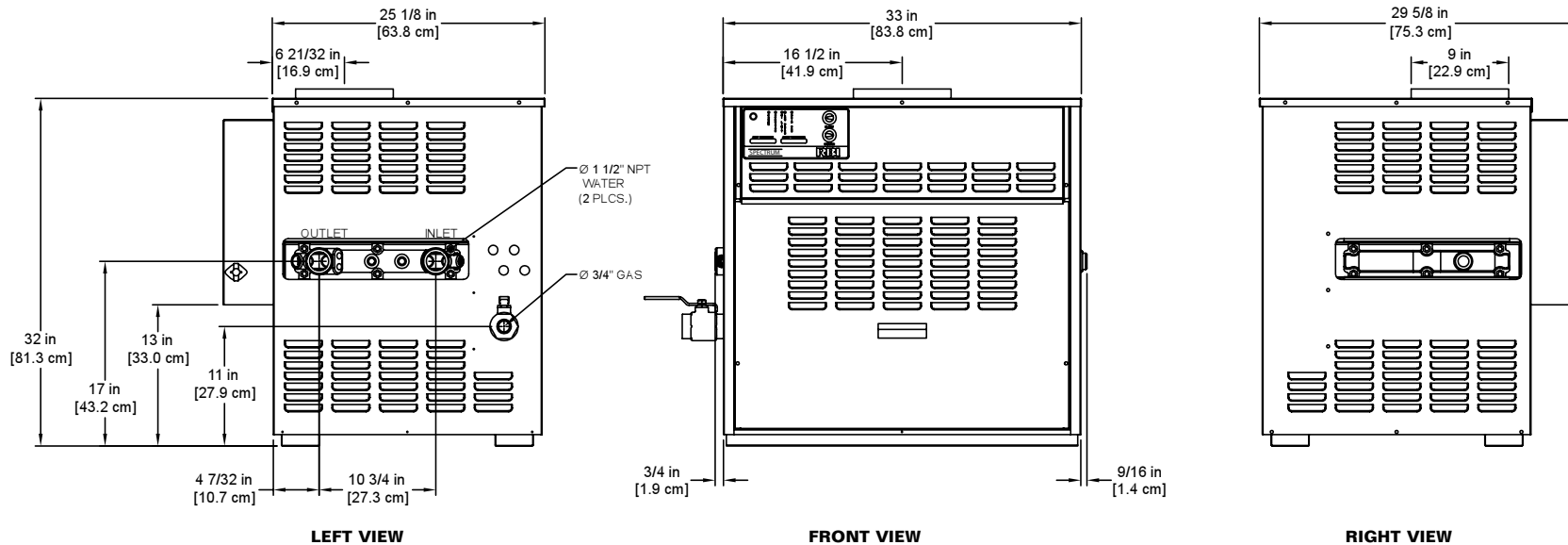
**REP FIRM** \_\_\_\_\_  
**SUBMITTED BY** \_\_\_\_\_  
**JOB NAME** \_\_\_\_\_  
**ARCHITECT** \_\_\_\_\_  
**ENGINEER** \_\_\_\_\_  
**CONTRACTOR** \_\_\_\_\_  
**DATE** \_\_\_\_\_

# SPECTRUM 300

**Category I Appliance**

Must be vented into a negative pressure vent system.

A Division of Mestek, Inc.  
Westfield, MA 01085  
(413) 568-9571



RSUB-6-A

**A.G.A. CERTIFIED RATINGS & CAPACITIES**

<b>Fuel Type</b>	Natural/Propane Gas	<b>Boiler FLA</b>	1*
<b>Input BTU/hr.</b>	350,000 / 103 kW	<b>Min. Gas Pressure Required</b>	5" W.C.**
<b>Output BTU/hr.</b>	290,500 / 85 kW	<b>Max. Gas Pressure Allowed</b>	14" W.C.
<b>Electrical Requirements</b>	120VAC / 1 ph / 60 hz	<b>Operating Weight</b>	251 lbs. / 114 kg.

**TEMPERATURE RISE / PRESSURE DROP**

10° F / 5.5° C		20° F / 11.1° C		30° F / 16.7° C								
Flow Rate	Pressure Drop	Flow Rate	Pressure Drop	Flow Rate	Pressure Drop							
GPM	L/s	Ft	kPa	GPM	L/s	Ft	kPa	GPM	L/s	Ft	kPa	
58.1	3.7	1.23	3.6	29.1	1.8	0.34	1.0	19.4	1.2	0.20	0.5	<b>2 Pass</b>
-	-	-	-	29.1	1.8	2.47	7.3	19.4	1.2	1.20	3.4	<b>4 Pass</b>

**BOILER TRIM & CONTROLS**

<b>Gas Valve - CON</b>	Honeywell VR8300A 3/4"	<b>Ignition Control</b>	S8610M
<b>Gas Valve - INT</b>	Honeywell VR8304M 3/4"	<b>Relief Valve - SW</b>	3/4" x 3/4" set @ 125 psi
<b>Operating Control (SB)</b>	Jumo EMF-1 - Std Pilot/On/Off	<b>Relief Valve - SB</b>	3/4" x 3/4" set @ 30 psi
<b>Operating Control (SW)</b>	Jumo EMF-1 - Std Pilot/On/Off	<b>High Limit (SB)</b>	Honeywell L4008E1305
<b>Operating Control (SB/SW)</b>	Honeywell L6008G - 2 Stage	<b>High Limit (SW)</b>	Honeywell L4008E1313

**RECOVERY CAPACITY**

40°F	22° C	60°F	33° C	80°F	44° C	100°F	56° C	120°F	67° C	140°F	78° C
872	3300	581	2200	436	1650	349	1320	291	1100	249	943

**A.S.M.E.**

<b>ASME Sect IV Htg Surface</b>	48.5 Sq. Ft. / 4.50 Sq. M.	<b>Design Data</b>	Max. 160 psig & 250° F
---------------------------------	----------------------------	--------------------	------------------------

**NOTE:** Dimensions are approximate and should not be used to "rough-in" equipment.

\* Add circulator amps.

\*\* For incoming gas pressures lower than 5" W.C. natural or 12" W.C. propane, consult factory.

**REP FIRM** \_\_\_\_\_  
**SUBMITTED BY** \_\_\_\_\_  
**JOB NAME** \_\_\_\_\_  
**ARCHITECT** \_\_\_\_\_  
**ENGINEER** \_\_\_\_\_  
**CONTRACTOR** \_\_\_\_\_  
**DATE** \_\_\_\_\_

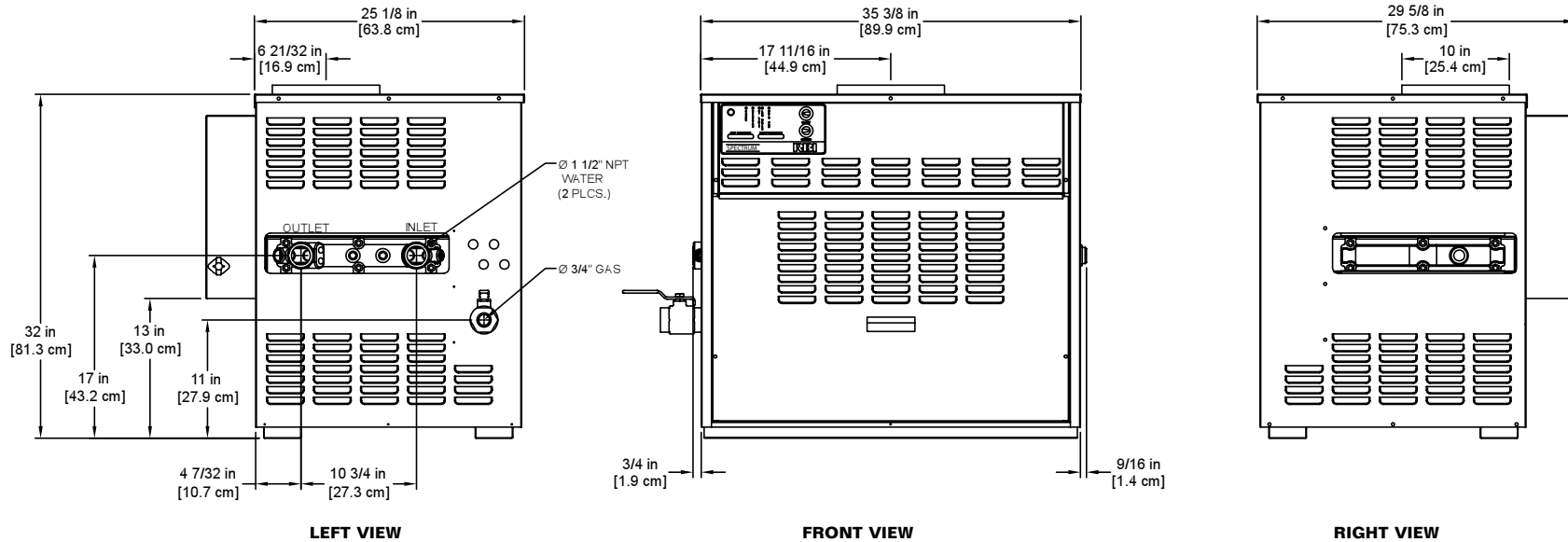
**SPECTRUM 350**

**Category I Appliance**

Must be vented into a negative pressure vent system.



A Division of Mestek, Inc.  
Westfield, MA 01085  
(413) 568-9571



RSUB-7-A

**A.G.A. CERTIFIED RATINGS & CAPACITIES**

<b>Fuel Type</b>	Natural/Propane Gas	<b>Boiler FLA</b>	1*
<b>Input BTU/hr.</b>	399,000 / 117 kW	<b>Min. Gas Pressure Required</b>	5" W.C.**
<b>Output BTU/hr.</b>	331,170 / 97 kW	<b>Max. Gas Pressure Allowed</b>	14" W.C.
<b>Electrical Requirements</b>	120VAC / 1 ph / 60 hz	<b>Operating Weight</b>	272 lbs. / 123 kg.

**TEMPERATURE RISE / PRESSURE DROP**

10° F / 5.5° C		20° F / 11.1° C		30° F / 16.7° C								
Flow Rate	Pressure Drop	Flow Rate	Pressure Drop	Flow Rate	Pressure Drop							
GPM	L/s	Ft	kPa	GPM	L/s	Ft	kPa	GPM	L/s	Ft	kPa	
66.4	4.2	1.77	5.2	33.2	2.1	0.49	1.4	22.1	1.4	0.20	0.7	<b>2 Pass</b>
-	-	-	-	33.2	2.1	3.54	10.4	22.1	1.4	1.70	4.9	<b>4 Pass</b>

**BOILER TRIM & CONTROLS**

<b>Gas Valve - CON</b>	Honeywell VR8300A 3/4"	<b>Ignition Control</b>	S8610M
<b>Gas Valve - INT</b>	Honeywell VR8304M 3/4"	<b>Relief Valve - SW</b>	3/4" x 3/4" set @ 125 psi
<b>Operating Control (SB)</b>	Jumo EMF-1 - Std Pilot/On/Off	<b>Relief Valve - SB</b>	3/4" x 3/4" set @ 30 psi
<b>Operating Control (SW)</b>	Jumo EMF-1 - Std Pilot/On/Off	<b>High Limit (SB)</b>	Honeywell L4008E1305
<b>Operating Control (SB/SW)</b>	Honeywell L6008G - 2 Stage	<b>High Limit (SW)</b>	Honeywell L4008E1313

**RECOVERY CAPACITY**

40°F	22° C	60°F	33° C	80°F	44° C	100°F	56° C	120°F	67° C	140°F	78° C
994	3762	663	2508	497	1881	398	1505	331	1254	284	1075

**A.S.M.E.**

<b>ASME Sect IV Htg Surface</b>	54.3 Sq. Ft. / 5.04 Sq. M.	<b>Design Data</b>	Max. 160 psig & 250° F
---------------------------------	----------------------------	--------------------	------------------------

**NOTE:** Dimensions are approximate and should not be used to "rough-in" equipment.

\* Add circulator amps.

\*\* For incoming gas pressures lower than 5" W.C. natural or 12" W.C. propane, consult factory.

**REP FIRM** \_\_\_\_\_  
**SUBMITTED BY** \_\_\_\_\_  
**JOB NAME** \_\_\_\_\_  
**ARCHITECT** \_\_\_\_\_  
**ENGINEER** \_\_\_\_\_  
**CONTRACTOR** \_\_\_\_\_  
**DATE** \_\_\_\_\_

# SPECTRUM 400

**Category I Appliance**

Must be vented into a negative pressure vent system.

A Division of Mestek, Inc.  
Westfield, MA 01085  
(413) 568-9571