

TWIN-PAK

Submittal

Style "TP"
Slope Top Enclosures
Copper/Aluminum &
Steel Element Ratings

Specification

ENCLOSURE:

STYLE : "TP"
OUTLET: Slope Louvered
Two-Piece
LENGTHS: 2' thru 8' in 1' Increments
MATERIAL 18 Ga. C.R.S. Std.
FINISH: Baked Primer

BACKPLATE:

TYPE: Partial Backplate
LENGTHS: 4' and 8' Only
MATERIAL: 20 Ga. Painted Std.

ELEMENT:

TYPE: Cu/Al (Mechanically Expanded)
LENGTHS: 2' thru 6' in 1' Increments.
One End Flared, Std.
See Catalog for Working Pressures.

ELEMENT:

TYPE: Steel (Mechanically Expanded)
LENGTHS: 2' thru 6' in 1' Increments.
 NPT Threads Both Ends (standard)
 Beveled Ends for Field Weld

BRACKETS: Bracket w/Brkt Mtd B.B. Hanger

ACCESSORIES: All overlapping, engage between backplate and wall at top. Bottom returns to wall, holes provided for fasteners.

Note: Assembly includes all necessary components for complete assembly. Element is shipped in separate carton.

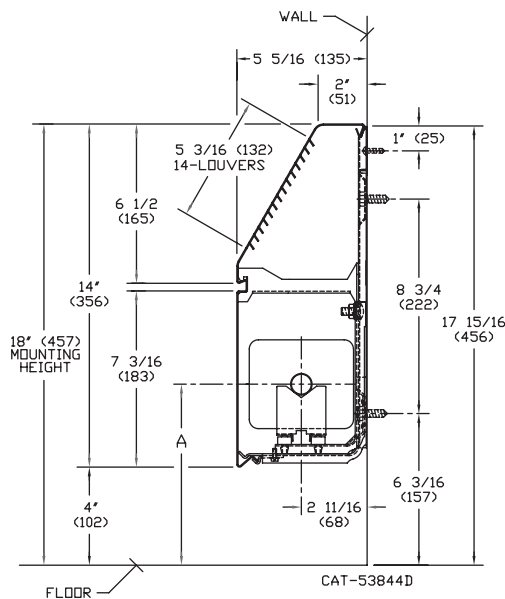
STEEL

ELEMENT DESIGNATION	NOMINAL PIPE SIZE	CRADLE	A MIN.	A MAX.
ST-144	1-1/4 (32)	2	7-7/8 (200)	8-15/16 (227)
ST-243	2" (50)	1	7-5/8 (194)	8-3/4 (222)

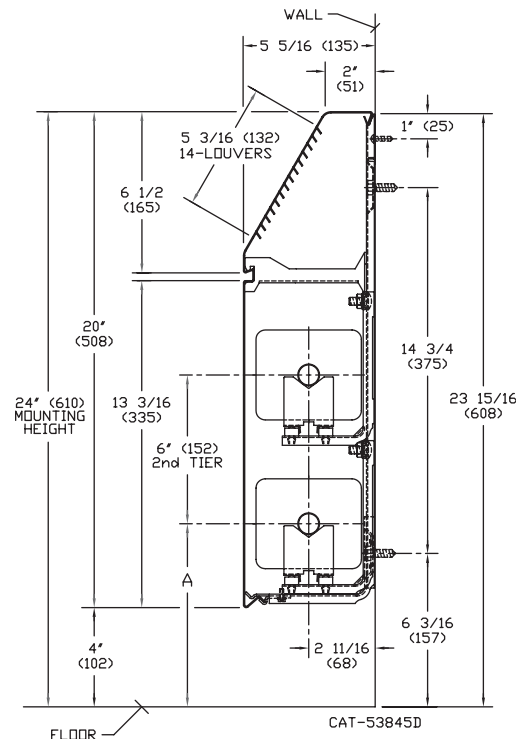
COPPER

ELEMENT DESIGNATION	NOMINAL PIPE SIZE	CRADLE	A MIN.	A MAX.
STC-3/4 435	3/4 (20)	2	7-3/8 (187)	8-1/2 (216)
STC-435	1" (25)	2	7-1/2 (191)	8-5/8 (219)
STC-1435	1-1/4 (32)	2	7-5/8 (194)	8-13/16 (224)

TP-14



TP-20



260 North Elm St.,
Westfield, MA 01085
Tel: (413) 562-5423
Fax: (413) 572-3764
www.beacon-morris.com

PROJECT: _____ DATE: _____
 LOCATION: _____
 ARCHITECT: _____
 ENGINEER: _____
 CONTRACTOR: _____
 PO NUMBER: _____

STYLE "TP"

COPPER/ALUMINUM ELEMENT RATINGS

COVER	TUBE SIZE	CATALOG DESIGNATION	FIN SIZE	FIN PER FT.	FIN THICKNESS	ENCL DEPTH AND HEIGHT IN INCHES	TIERS AND CENTERS IN INCHES	MTG. HEIGHT IN INCHES	STEAM 215° FACTOR	HOT WATER (AVG.)					
										200°	190°	180°	170°	160°	150°
										FACTOR					
									1.00	.86	.78	.69	.61	.53	.45
TP-14	3/4"	STC-3/4-435	4-1/4" x 3-5/8"	50	.020"	14B	1	18	1840	1580	1440	1270	1120	980	830
	1"	STC-435	4-1/4" x 3-5/8"	50	.020"	14B	1	18	1930	1660	1510	1330	1180	1020	870
	1-1/4"	STC-1435	4-1/4" x 3-5/8"	50	.020"	14B	1	18	1860	1600	1450	1280	1130	990	840
TP-20	3/4"	STC-3/4-435	4-1/4" x 3-5/8"	50	.020"	20B	1	24	2090	1800	1630	1440	1270	1110	940
	1"	STC-435	4-1/4" x 3-5/8"	50	.020"	20B	1	24	2180	1870	1700	1500	1330	1160	980
	1-1/4"	STC-1435	4-1/4" x 3-5/8"	50	.020"	20B	1	24	2130	1830	1660	1470	1300	1130	960
TP-20	3/4"	STC-3/4-435	4-1/4" x 3-5/8"	50	.020"	20B	2	24	2820	2430	2200	1950	1720	1490	1270
	1"	STC-435	4-1/4" x 3-5/8"	50	.020"	20B	2	24	2640	2270	2060	1820	1610	1400	1190
	1-1/4"	STC-1435	4-1/4" x 3-5/8"	50	.020"	20B	2	24	2510	2160	1960	1730	1530	1300	1130

STYLE "TP"

STEEL ELEMENT RATINGS

COVER	TUBE SIZE	CATALOG DESIGNATION	FIN SIZE	FIN PER FT.	FIN THICKNESS	ENCL DEPTH AND HEIGHT IN INCHES	TIERS AND CENTERS IN INCHES	MTG. HEIGHT IN INCHES	STEAM 215° FACTOR	HOT WATER (AVG.)					
										200°	190°	180°	170°	160°	150°
										FACTOR					
									1.00	.86	.78	.69	.61	.53	.45
TP-14	1-1/4"	ST144	4-1/4" SQ.	40	.032" A	14B	1	18	1570	1350	1230	1080	960	830	710
	1-1/4"	ST243	4-1/4" SQ.	32	.032" A	14B	1	"	1400	1300	1080	970	850	740	630
TP-20	1-1/4"	ST144	4-1/4" SQ.	40	.032" A	20B	1	24	1670	1440	1300	1150	1020	890	750
	1-1/4"	ST243	4-1/4" SQ.	32	.032" A	20B	1	"	1450	1250	1130	1000	890	770	650
TP-20	1-1/4"	ST144	4-1/4" SQ.	40	.032" A	20B	2	"	2370	2040	1850	1640	1450	1260	1070
	1-1/4"	ST243	4-1/4" SQ.	32	.032" A	20B	2	"	2110	1820	1650	1460	1290	1120	950

Guaranteed Working Pressures (PSI)

- 1 1/4" IPS: 660 @ temps. up to 650°F
 - 2" IPS: 405 @ temps. up to 650°F
 - 1 1/4" CU: 194 @ temps. up to 300°F
 - 1" CU: 204 @ temps. up to 300°F
 - 3/4" CU: 218 @ temps. up to 300°F
- Maximum pressures at other temperatures are available upon request.

Installation Details

• Standard length: Available from 3' to 8' in 12" increments.

