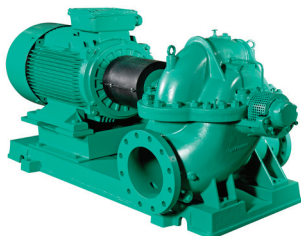


# Submittal Data Sheet

## Wilo SCP – Horizontal Split Case Pumps



### SCP 5 x 4 x 11 HA



Project:

Engineer:

Contractor:

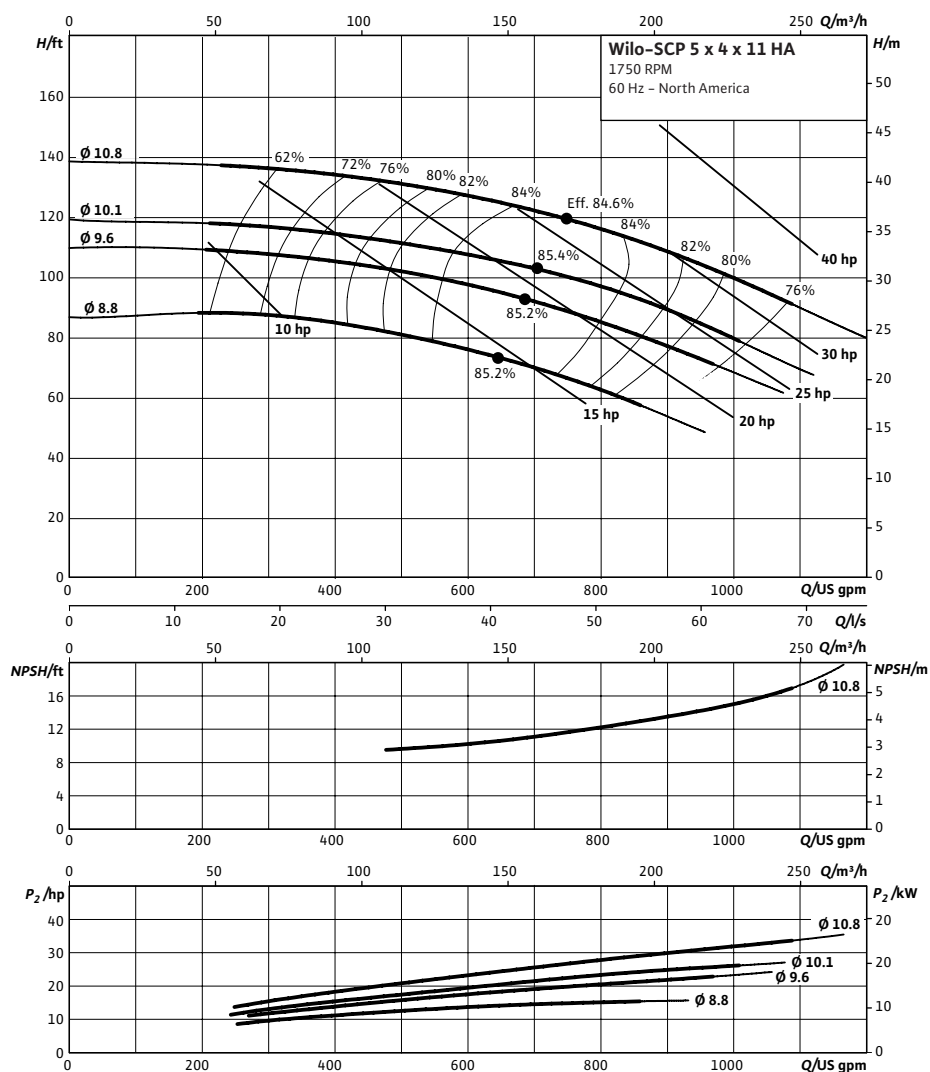
Submitted By:

Date:

Approved By:

Date:

Tag #	Model #	Flow (USGPM)	Head (Feet)	HP	Enclosure TEFC/ODP	Frame	Cycle	Phase	Voltage	RPM
	SCP 5 x 4 x 11 HA						60 Hz	3		



#### Technical Data

##### Approved Fluids

Heating Water

Cooling and cold water

Water-Glycol mixtures (for 20–40% glycol and fluid temp ≤ 104°F [40°C])

##### Fluid Temperature

Mechanical Seal 18°F to 250°F (–8°C to 120°C)

Stuffing Box Packing 18°F to 220°F (–8°C to 105°C)

#### Materials of Construction

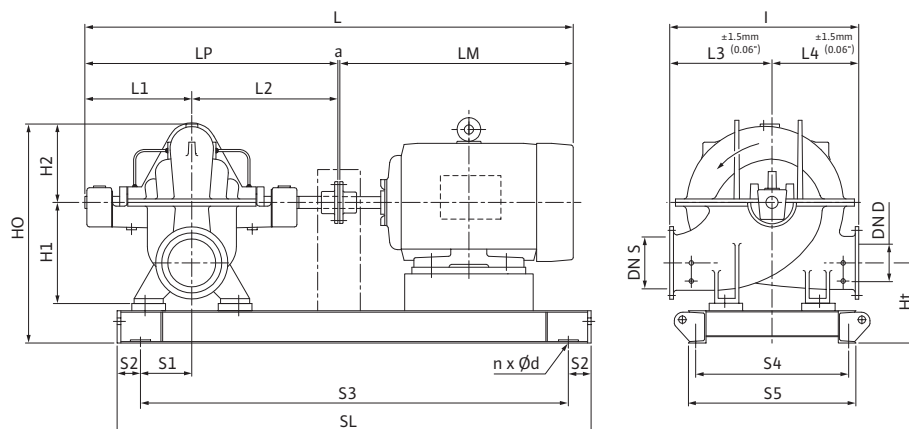
##### American Standard

<input type="checkbox"/> Pump Housing	A48 Class 35
<input type="checkbox"/> Pump Housing (Optional)	Ni-resist BS 3468 Gr 2 / BS 2789 500.1
<input type="checkbox"/> Impeller	BS 84 C83 600
<input type="checkbox"/> Impeller (optional)	A48 Class 35 / BS 84 C83 600
<input type="checkbox"/> Stationary Wear Rings	BS 84 C93 700
<input type="checkbox"/> Pump Shaft	A276 type 410
<input type="checkbox"/> Pump Shaft (optional)	BS 970 316 S16
<input type="checkbox"/> Mechanical Seal	Carbon/silicon carbide/EPDM (E1)
<input type="checkbox"/> Other Mechanical Seals	Avail. on request
<input type="checkbox"/> Additional Spacer Coupling	Avail. on request
<input type="checkbox"/> Other:	

Approval Stamp

## Dimensional Drawing

## Single Stage Pump



## SCP 5 x 4 x 11 HA

Dimensions - Inches (mm)																							
Frame	a	L	I	L1	L2	L3	L4	LM	LP	H1	H2	HO	Ht	n	ød	S1	S2	S3	S4	S5	SL	P5	P6
215T	.50 (13)	48.88 (1242)	21.63 (549)	13.63 (346)	15.69 (399)	11.81 (300)	9.81 (249)	19.00 (483)	29.38 (746)	10.63 (270)	7.50 (191)	22.75 (578)	8.38 (213)	6	.81 (21)	4.25 (108)	4.00 (102)	34.00 (864)	12.25 (311)	13.65 (347)	42.00 (1067)	-	-
254T	.50 (13)	53.00 (1346)	21.63 (549)	13.63 (346)	15.69 (399)	11.81 (300)	9.81 (249)	21.06 (534)	29.38 (746)	10.63 (270)	7.50 (191)	22.75 (578)	8.38 (213)	6	.81 (21)	4.25 (108)	4.00 (102)	39.00 (991)	13.25 (337)	14.65 (346)	47.00 (1194)	-	-
256T	.50 (13)	53.00 (1346)	21.63 (549)	13.63 (346)	15.69 (399)	11.81 (300)	9.81 (249)	23.19 (589)	29.38 (746)	10.63 (270)	7.50 (191)	22.75 (578)	8.38 (213)	6	.81 (21)	4.25 (108)	4.00 (102)	39.00 (991)	13.25 (337)	14.65 (346)	47.00 (1194)	-	-
284T	.50 (13)	55.81 (1418)	21.63 (549)	13.63 (346)	15.69 (399)	11.81 (300)	9.81 (249)	25.94 (659)	29.38 (746)	10.63 (270)	7.50 (191)	22.75 (578)	8.38 (213)	6	.81 (21)	4.25 (108)	4.00 (102)	39.00 (991)	13.25 (337)	14.65 (346)	47.00 (1194)	-	-
286T	.50 (13)	55.81 (1418)	21.63 (549)	13.63 (346)	15.69 (399)	11.81 (300)	9.81 (249)	25.94 (659)	29.38 (746)	10.63 (270)	7.50 (191)	22.75 (578)	8.38 (213)	6	.81 (21)	4.25 (108)	4.00 (102)	39.00 (991)	13.25 (337)	14.65 (346)	47.00 (1194)	-	-
324T	.50 (13)	60.25 (1530)	21.63 (549)	13.63 (346)	15.69 (399)	11.81 (300)	9.81 (249)	30.38 (772)	29.38 (746)	10.63 (270)	7.50 (191)	22.75 (578)	8.38 (213)	6	.81 (21)	4.25 (108)	4.00 (102)	41.00 (1041)	15.25 (387)	16.65 (423)	49.00 (1245)	-	-

### Flange Dimensions – Suction Side

Dimensions - Inches (mm)						
DN S #125	ØD	Ød	Øk	b	n	D2
5	10.00 (254)	7.31 (186)	8.50 (216)	.94 (24)	8	.88 (22)

### Flange Dimensions – Discharge Side

Dimensions - Inches (mm)						
DN D 125#	ØD	Ød	Øk	b	n	D2
4	9.00 (229)	6.19 (157)	7.50 (191)	.94 (24)	8	.75 (19)

