

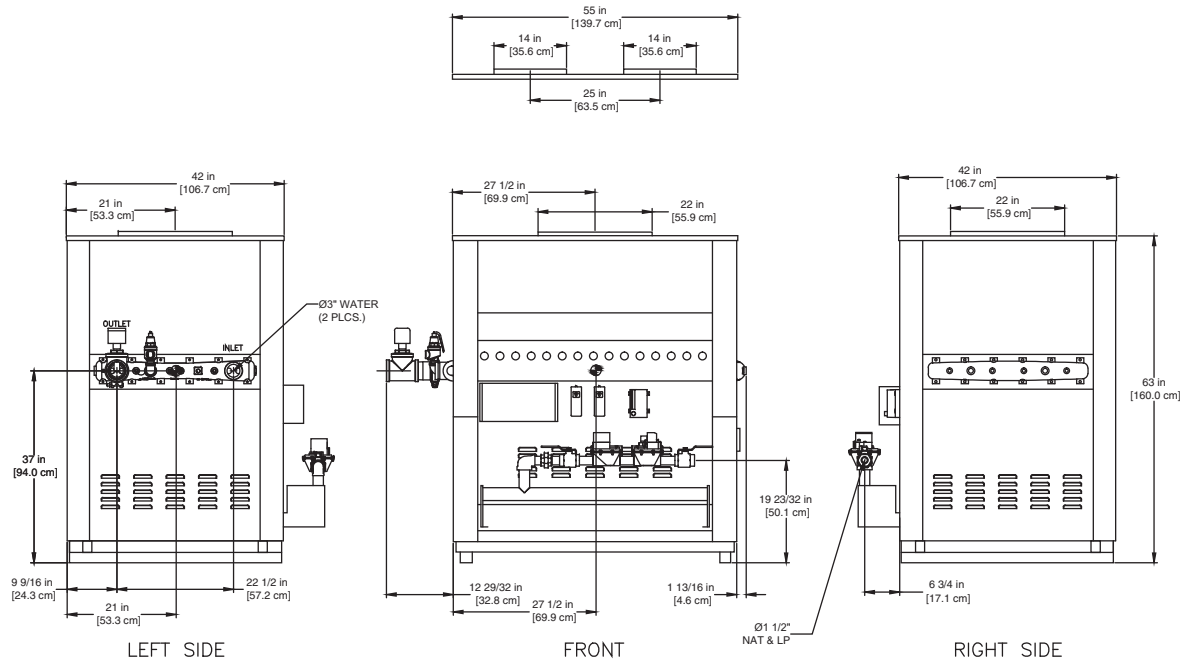
## CODE OPTIONS

<b>CSD-1</b>	UTC 1003-616A Ignition Control UTC Lockout/Reset Control Manual Reset LWCO
<b>IRI</b>	IRI requirements as listed in IM.4.1.1 (two motorized safety valves with N.O.V.V. no longer applies to listed atmospheric gas boilers). The addition of CSD-1 option satisfies IRI requirements for the 8800 Series.
<b>Kentucky</b>	200 °F Maximum Operating Control and High Limit

**NOTE:** Dimensions are approximate and should not be used to "rough-in" equipment.

\* Add circulator amps.

\*\*For incoming gas pressures lower than 6" WC natural or 11" WC propane, consult factory.



## AGA CERTIFIED RATINGS & CAPACITIES

<b>Fuel Type</b>	Natural/Propane Gas	<b>Boiler FLA</b>	1*
<b>Input BTU/hr.</b>	2,000,000 / 586 kW	<b>Min. Gas Pressure Required</b>	6" WC**
<b>Output BTU/hr.</b>	1,640,000 / 480 kW	<b>Max. Gas Pressure Allowed</b>	14" WC
<b>Electrical Requirements</b>	120VAC / 1 ph / 60 hz	<b>Operating Weight</b>	1194 lbs. / 542 kg.

## TEMPERATURE RISE / PRESSURE DROP

20°F / 11.1°C		25°F / 13.9°C		30°F / 16.7°C		35°F / 19.4°C									
Flow Rate	Pressure Drop	Flow Rate	Pressure Drop	Flow Rate	Pressure Drop	Flow Rate	Pressure Drop								
GPM	L/s	Ft	kPa	GPM	L/s	Ft	kPa	GPM	L/s	Ft	kPa	GPM	L/s	Ft	kPa
164.0	10.3	4.1	12.0	131.2	8.3	2.7	8.0	109.3	6.9	1.9	5.7	93.7	5.9	1.4	4.3

## BOILER TRIM & CONTROLS

<b>Main Gas Valve</b>	Honeywell V8944B 1-1/2"	<b>High Limit (HB/HW)</b>	Honeywell L4008E
<b>Firing Valve</b>	Honeywell B200T1058 1-1/2"	<b>Ignition Control</b>	Honeywell S8610M
<b>Safety Valve</b>	Honeywell V88A 1-1/2"	<b>Solenoid Valve w/Reg.</b>	CV100
<b>Operating Control (HB)</b>	Honeywell L4008A - On/Off	<b>Relief Valve - HW</b>	3/4" x 3/4" set @125 psi
<b>Operating Control (HW)</b>	Honeywell L6008A - On/Off	<b>Relief Valve - HB</b>	1" x 1-1/4" set @ 50 psi
<b>Operating Control (HB/HW)</b>	Honeywell L6008G - 2 Stg.	<b>Flow Switch</b>	TACO IFS-1
<b>Operating Control (HB/HW)</b>	Tekmar BTC- 4PA- 4 Stg.		

## RECOVERY CAPACITY

40°F	22°C	60°F	33°C	80°F	44°C	100°F	56°C	120°F	67°C	140°F	78°C
4922	18632	3281	12421	2461	9316	1969	7453	1641	6211	1406	5323

## ASME

<b>ASME Sect IV Htg Surface</b>	169.52 Sq. Ft. / 15.75 Sq. M.	<b>Design Data</b>	Max. 160 psig & 250°F
<b>Water Volume</b>	3.6 gal / 13.6 l (liters)		

REP FIRM \_\_\_\_\_  
 SUBMITTED BY \_\_\_\_\_  
 JOB NAME \_\_\_\_\_  
 ARCHITECT \_\_\_\_\_  
 ENGINEER \_\_\_\_\_  
 CONTRACTOR \_\_\_\_\_  
 DATE \_\_\_\_\_

# 8800 2000

### Category I Appliance

Must be vented into a negative pressure vent system



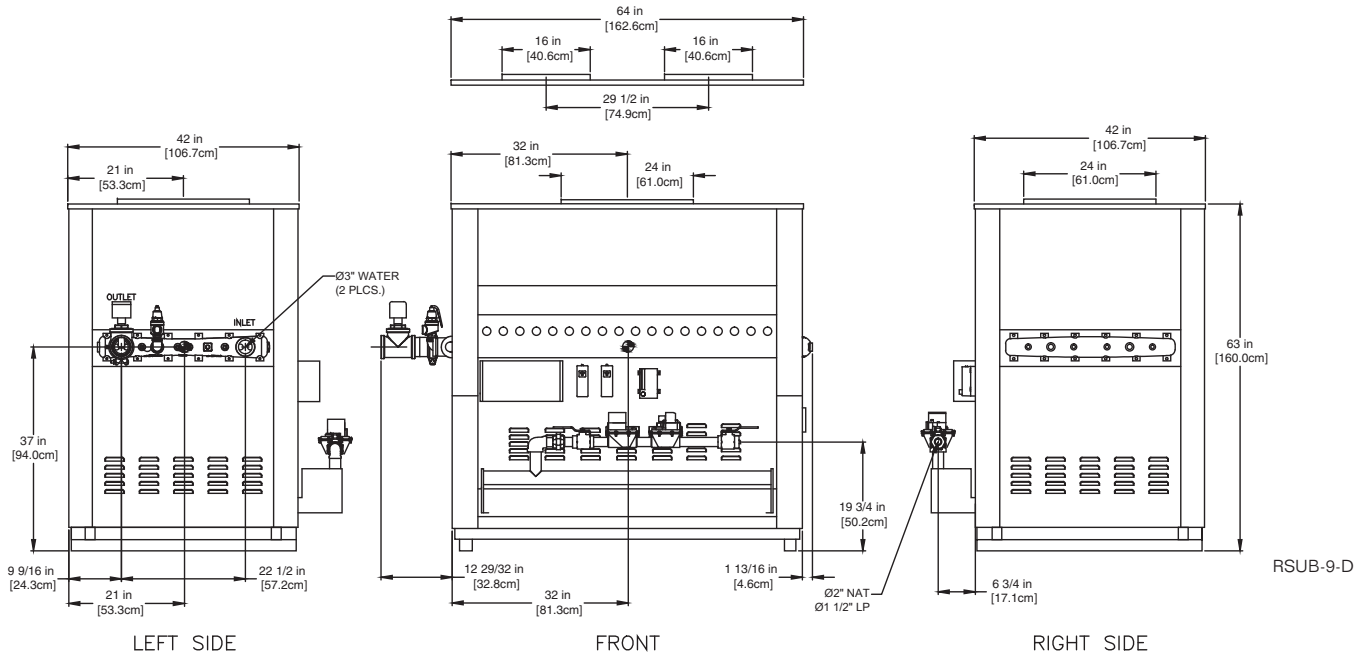
A Division of Mestek, Inc.  
 Westfield, MA 01085  
 (413) 568-9571

**CODE OPTIONS**

<b>CSD-1</b>	UTC 1003-616A Ignition Control UTC Lockout/Reset Control Manual Reset LWCO
<b>IRI</b>	IRI requirements as listed in IM.4.1.1 (two motorized safety valves with N.O.V.V. no longer applies to listed atmospheric gas boilers). The addition of CSD-1 option satisfies IRI requirements for the 8800 Series.
<b>Kentucky</b>	200°F Maximum Operating Control and High Limit

**NOTE:** Dimensions are approximate and should not be used to "rough-in" equipment.

- \* Add circulator amps.
- \*\*For incoming gas pressures lower than 6" WC natural or 11" WC propane, consult factory.



**AGA CERTIFIED RATINGS & CAPACITIES**

<b>Fuel Type</b>	Natural/Propane Gas	<b>Boiler FLA</b>	1*
<b>Input BTU/hr.</b>	2,400,000 / 703 kW	<b>Min. Gas Pressure Required</b>	6" WC**
<b>Output BTU/hr.</b>	1,968,000 / 577 kW	<b>Max. Gas Pressure Allowed</b>	14" WC
<b>Electrical Requirements</b>	120VAC / 1 ph / 60 hz	<b>Operating Weight</b>	1308 lbs. / 593 kg.

**TEMPERATURE RISE / PRESSURE DROP**

20°F / 11.1°C		25°F / 13.9°C		30°F / 16.7°C		35°F / 19.4°C									
Flow Rate	Pressure Drop	Flow Rate	Pressure Drop	Flow Rate	Pressure Drop	Flow Rate	Pressure Drop								
GPM	L/s	Ft	kPa	GPM	L/s	Ft	kPa	GPM	L/s	Ft	kPa				
196.8*	12.4	6.8	20.0	157.4	9.9	4.5	13.2	131.2	8.3	3.2	9.4	112.5	7.1	2.4	7.1

\*Flow exceeds recommended maximum use a greater temperature rise or consult manufacturer. Cupro-Nickel heat exchanger should be considered.

**BOILER TRIM & CONTROLS**

<b>Main Gas Valve</b>	Honeywell V8944B 2"	<b>Operating Control (HB/HW)</b>	Tekmar BTC- 4PA- 4 Stg.
<b>Firing Valve</b>	Honeywell B200T1066 2"	<b>High Limit (HB/HW)</b>	Honeywell L4008E
<b>Safety Valve</b>	Honeywell V88A 2"	<b>Ignition Control</b>	Honeywell S8610M
<b>Operating Control (HB)</b>	Honeywell L4008A - On/Off	<b>Solenoid Valve w/Reg.</b>	CV100
<b>Operating Control (HW)</b>	Honeywell L6008A - On/Off	<b>Relief Valve - HW</b>	3/4" x 3/4" set @125 psi
<b>Operating Control (HB/HW)</b>	Honeywell L6008G - 2 Stg.	<b>Relief Valve - HB</b>	1" x 1-1/4" set @ 50 psi
		<b>Flow Switch</b>	TACO IFS-1

**RECOVERY CAPACITY**

40°F	22°C	60°F	33°C	80°F	44°C	100°F	56°C	120°F	67°C	140°F	78°C
5906	22358	3938	14905	2953	11179	2363	8943	1969	7453	1688	6388

**ASME**

<b>ASME Sect IV Htg Surface</b>	200.82 Sq. Ft. / 18.66 Sq. M.	<b>Design Data</b>	Max. 160 psig & 250°F
<b>Water Volume</b>	4.1 gal / 15.5 l (liters)		

**REP FIRM** \_\_\_\_\_  
**SUBMITTED BY** \_\_\_\_\_  
**JOB NAME** \_\_\_\_\_  
**ARCHITECT** \_\_\_\_\_  
**ENGINEER** \_\_\_\_\_  
**CONTRACTOR** \_\_\_\_\_  
**DATE** \_\_\_\_\_

**8800 2400**

**Category I Appliance**

Must be vented into a negative pressure vent system



A Division of Mestek, Inc.  
Westfield, MA 01085  
(413) 568-9571

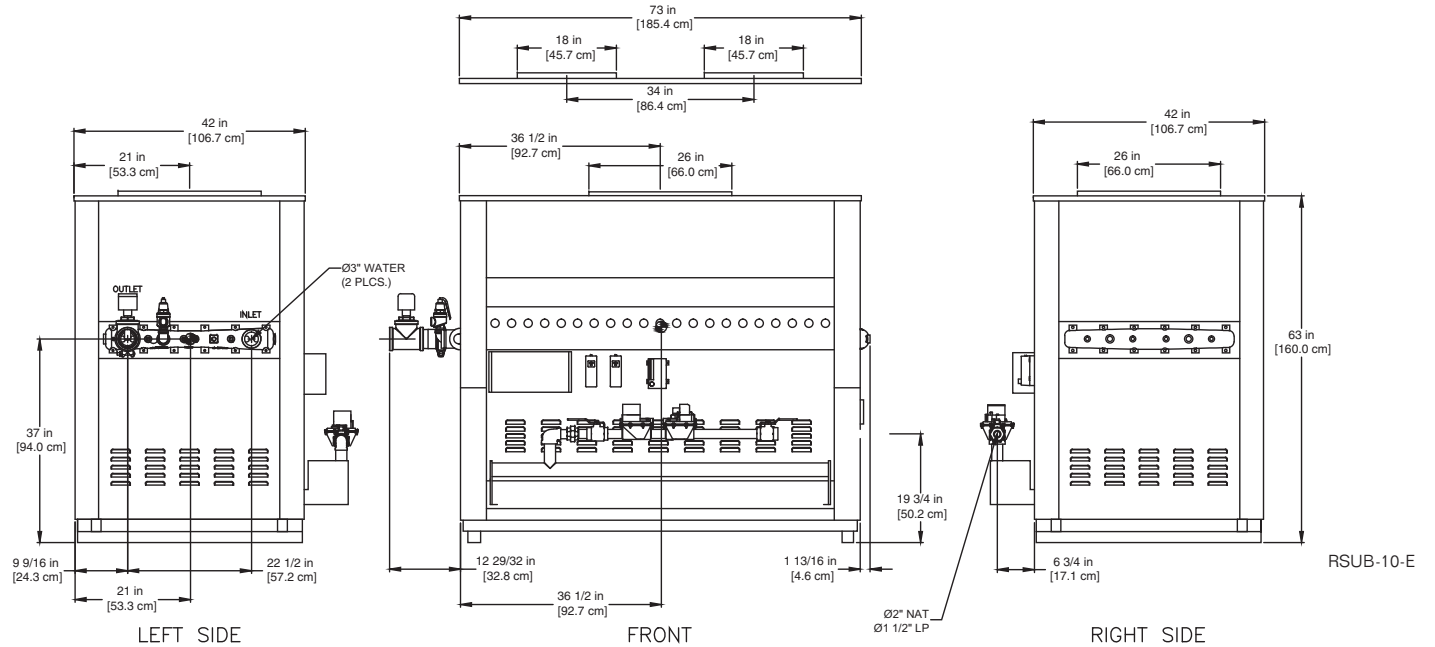
## CODE OPTIONS

<b>CSD-1</b>	UTC 1003-616A Ignition Control UTC Lockout/Reset Control Manual Reset LWCO
<b>FM</b>	RM7890A Flame Safeguard (2) Motorized Valves (One w/POC) Normally Open Vent Valve Manual Reset LWCO
<b>IRI</b>	IRI requirements as listed in IM.4.1.1 (two motorized safety valves with N.O.V.V. no longer applies to listed atmospheric gas boilers). The addition of CSD-1 option satisfies IRI requirements for the 8800 Series.
<b>Kentucky</b>	200°F Maximum Operating Control and High Limit

### NOTE:

Dimensions are approximate and should not be used to "rough-in" equipment.  
\* Add circulator amps.

\*\*For incoming gas pressures lower than 6" WC natural or 11" WC propane, consult factory.



## AGA CERTIFIED RATINGS & CAPACITIES

<b>Fuel Type</b>	Natural/Propane Gas	<b>Boiler FLA</b>	1*
<b>Input BTU/hr.</b>	2,800,000 / 820 kW	<b>Min. Gas Pressure Required</b>	6" WC**
<b>Output BTU/hr.</b>	2,296,000 / 673 kW	<b>Max. Gas Pressure Allowed</b>	14" WC
<b>Electrical Requirements</b>	120VAC / 1 ph / 60 hz	<b>Operating Weight</b>	1394 lbs. / 632 kg.

## TEMPERATURE RISE / PRESSURE DROP

25°F / 13.9°C				30°F / 16.7°C				35°F / 19.4°C			
Flow Rate		Pressure Drop		Flow Rate		Pressure Drop		Flow Rate		Pressure Drop	
GPM	L/s	Ft	kPa	GPM	L/s	Ft	kPa	GPM	L/s	Ft	kPa
183.7	11.6	6.9	20.3	153.1	9.7	4.9	14.5	131.2	8.3	3.7	10.9

## BOILER TRIM & CONTROLS

<b>Main Gas Valve</b>	Honeywell V8944B 2"	<b>High Limit (HB/HW)</b>	Honeywell L4008E
<b>Firing Valve</b>	Honeywell B200T1066 2"	<b>Ignition Control</b>	Honeywell S8610M
<b>Safety Valve</b>	Honeywell (2) V88A 2"	<b>Solenoid Valve w/Reg.</b>	CV100
<b>Operating Control (HB)</b>	Honeywell L4008A - On/Off	<b>Relief Valve - HW</b>	3/4" x 3/4" set @125 psi
<b>Operating Control (HW)</b>	Honeywell L6008A - On/Off	<b>Relief Valve - HB</b>	1-1/4" x 1-1/2" set @ 50 psi
<b>Operating Control (HB/HW)</b>	Honeywell L6008G - 2 Stg.	<b>Flow Switch</b>	TACO IFS-1
<b>Operating Control (HB/HW)</b>	Tekmar BTC- 4PA- 4 Stg.		

## RECOVERY CAPACITY

40°F	22°C	60°F	33°C	80°F	44°C	100°F	56°C	120°F	67°C	140°F	78°C
6891	26084	4594	17390	3445	13042	2756	10434	2297	8695	1969	7453

## ASME

<b>ASME Sect IV Htg Surface</b>	232.12 Sq. Ft. / 21.56 Sq. M.	<b>Design Data</b>	Max. 160 psig & 250°F
<b>Water Volume</b>	4.4 gal / 16.7 l (liters)		

REP FIRM \_\_\_\_\_  
 SUBMITTED BY \_\_\_\_\_  
 JOB NAME \_\_\_\_\_  
 ARCHITECT \_\_\_\_\_  
 ENGINEER \_\_\_\_\_  
 CONTRACTOR \_\_\_\_\_  
 DATE \_\_\_\_\_

# 8800 2800

### Category I Appliance

Must be vented into a negative pressure vent system



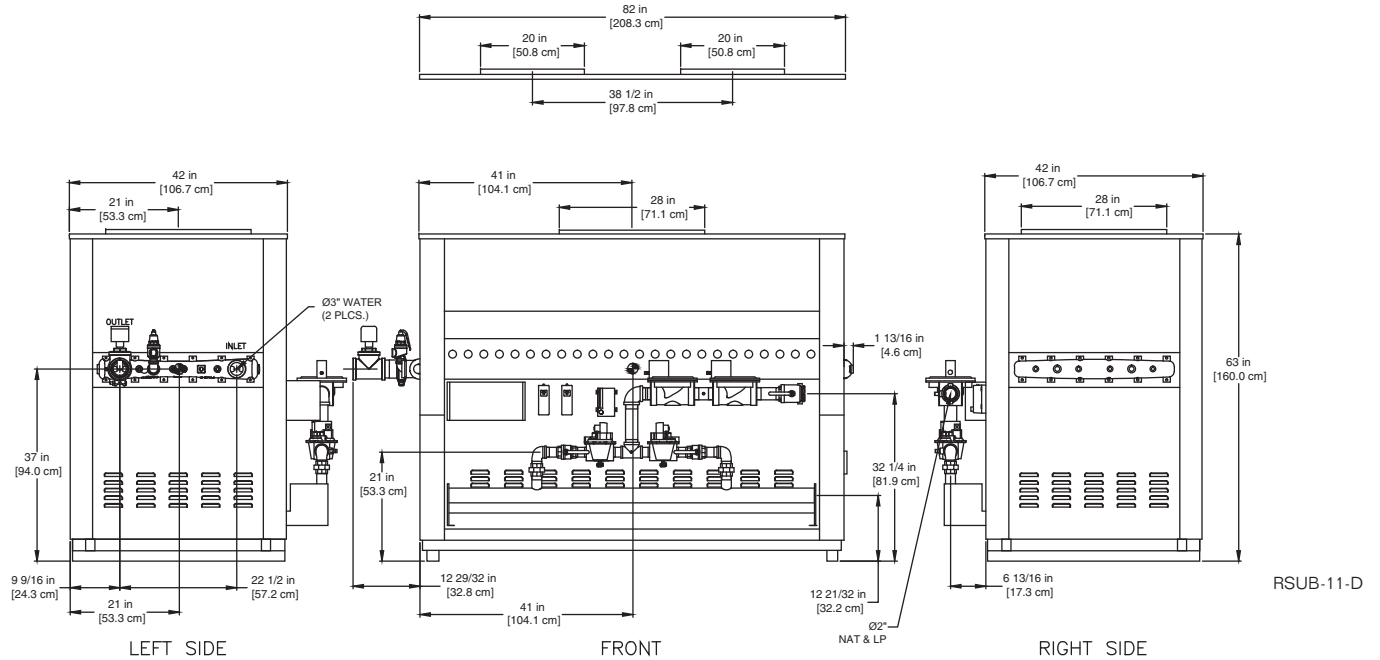
® A Division of Mestek, Inc.  
 Westfield, MA 01085  
 (413) 568-9571

### CODE OPTIONS

<b>CSD-1</b>	UTC 1003-616A Ignition Control UTC Lockout/Reset Control Manual Reset LWCO
<b>FM</b>	RM7890A Flame Safeguard (2) Motorized Valves (One w/POC) Normally Open Vent Valve Manual Reset LWCO
<b>IRI</b>	IRI requirements as listed in IM.4.1.1 (two motorized safety valves with N.O.V.V. no longer applies to listed atmospheric gas boilers). The addition of CSD-1 option satisfies IRI requirements for the 8800 Series.
<b>Kentucky</b>	200°F Maximum Operating Control and High Limit

**NOTE:**

Dimensions are approximate and should not be used to "rough-in" equipment.  
 \* Add circulator amps.  
 \*\*For incoming gas pressures lower than 6" WC natural or 11" WC propane, consult factory.



### AGA CERTIFIED RATINGS & CAPACITIES

<b>Fuel Type</b>	Natural/Propane Gas	<b>Boiler FLA</b>	1*
<b>Input BTU/hr.</b>	3,200,000 / 938 kW	<b>Min. Gas Pressure Required</b>	6" WC**
<b>Output BTU/hr.</b>	2,624,000 / 769 kW	<b>Max. Gas Pressure Allowed</b>	14" WC
<b>Electrical Requirements</b>	120VAC / 1 ph / 60 hz	<b>Operating Weight</b>	1527 lbs. / 693 kg.

### TEMPERATURE RISE / PRESSURE DROP

30°F / 16.7°C				35°F / 19.4°C			
Flow Rate		Pressure Drop		Flow Rate		Pressure Drop	
GPM	L/s	Ft	kPa	GPM	L/s	Ft	kPa
174.9	11.0	7.2	21.1	149.9	9.5	5.4	15.8

### BOILER TRIM & CONTROLS

<b>Main Gas Valve</b>	Honeywell (2) V8944B 1-1/4"	<b>High Limit (HB/HW)</b>	Honeywell L4008E
<b>Firing Valve</b>	Honeywell (2) B200T1041 1-1/4"	<b>Ignition Control</b>	Honeywell S8610M
<b>Safety Valve</b>	Honeywell (2) V88A 2"	<b>Solenoid Valve w/Reg.</b>	CV100
<b>Operating Control (HB)</b>	Honeywell L4008A - On/Off	<b>Relief Valve - HW</b>	3/4" x 3/4" set @125 psi
<b>Operating Control (HW)</b>	Honeywell L6008A - On/Off	<b>Relief Valve - HB</b>	1-1/4" x 1-1/2" set @ 50 psi
<b>Operating Control (HB/HW)</b>	Honeywell L6008G - 2 Stg.	<b>Flow Switch</b>	TACO IFS-1
<b>Operating Control (HB/HW)</b>	Tekmar BTC- 4PA- 4 Stg.		

### RECOVERY CAPACITY

40°F	22°C	60°F	33°C	80°F	44°C	100°F	56°C	120°F	67°C	140°F	78°C
7875	29811	5250	19874	3938	14905	3150	11924	2625	9937	2250	8517

### ASME

<b>ASME Sect IV Htg Surface</b>	263.41 Sq. Ft. / 24.47 Sq. M.	<b>Design Data</b>	Max. 160 psig & 250°F
<b>Water Volume</b>	4.8 gal / 18.2 l (liters)		

**REP FIRM** \_\_\_\_\_  
**SUBMITTED BY** \_\_\_\_\_  
**JOB NAME** \_\_\_\_\_  
**ARCHITECT** \_\_\_\_\_  
**ENGINEER** \_\_\_\_\_  
**CONTRACTOR** \_\_\_\_\_  
**DATE** \_\_\_\_\_

**8800 3200**

**Category I Appliance**

Must be vented into a negative pressure vent system



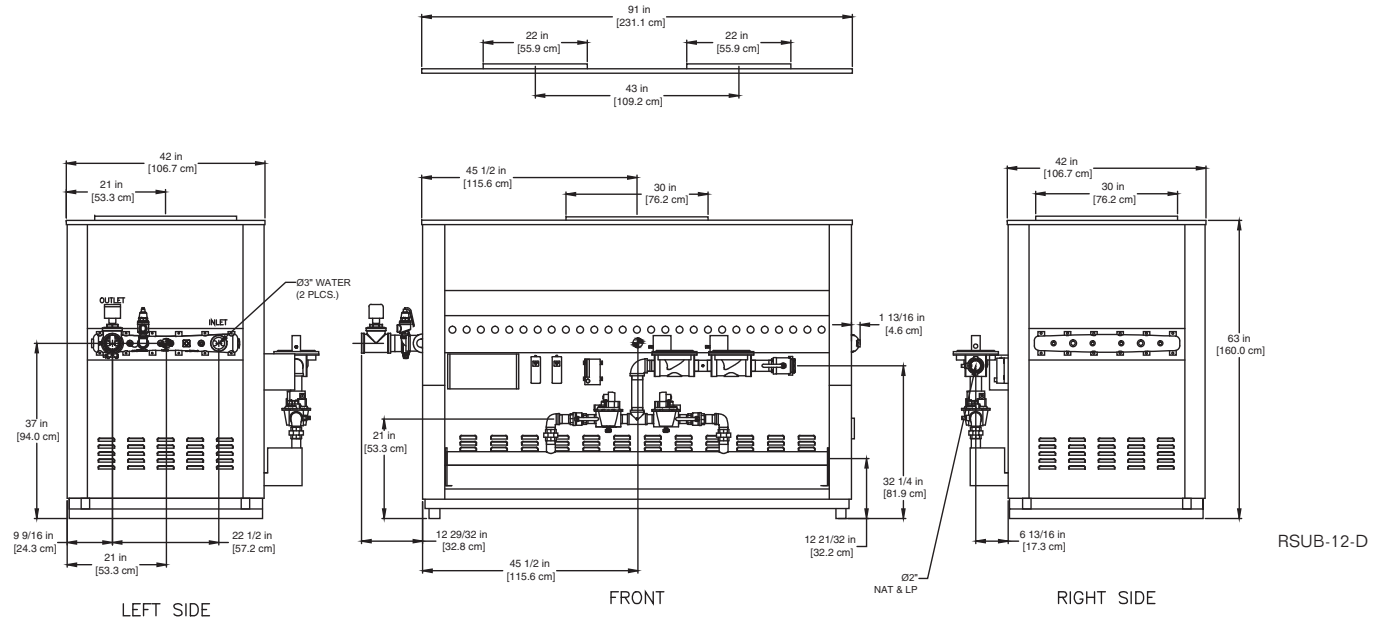
A Division of Mestek, Inc.  
 Westfield, MA 01085  
 (413) 568-9571

## CODE OPTIONS

<b>CSD-1</b>	UTC 1003-616A Ignition Control UTC Lockout/Reset Control Manual Reset LWCO
<b>FM</b>	RM7890A Flame Safeguard (2) Motorized Valves (One w/POC) Normally Open Vent Valve Manual Reset LWCO
<b>IRI</b>	IRI requirements as listed in IM.4.1.1 (two motorized safety valves with N.O.V.V. no longer applies to listed atmospheric gas boilers). The addition of CSD-1 option satisfies IRI requirements for the 8800 Series.
<b>Kentucky</b>	200°F Maximum Operating Control and High Limit

### NOTE:

Dimensions are approximate and should not be used to "rough-in" equipment.  
\* Add circulator amps.  
\*\*For incoming gas pressures lower than 6" WC natural or 11" WC propane, consult factory.



## AGA CERTIFIED RATINGS & CAPACITIES

<b>Fuel Type</b>	Natural/Propane Gas	<b>Boiler FLA</b>	1*
<b>Input BTU/hr.</b>	3,600,000 / 1,055 kW	<b>Min. Gas Pressure Required</b>	6" WC**
<b>Output BTU/hr.</b>	2,952,000 / 865 kW	<b>Max. Gas Pressure Allowed</b>	14" WC
<b>Electrical Requirements</b>	120VAC / 1 ph / 60 hz	<b>Operating Weight</b>	1624 lbs. / 737 kg.

## TEMPERATURE RISE / PRESSURE DROP

30°F / 16.7°C				35°F / 19.4°C			
Flow Rate		Pressure Drop		Flow Rate		Pressure Drop	
GPM	L/s	Ft	kPa	GPM	L/s	Ft	kPa
196.8*	12.4	10.0	29.3	168.7	10.6	7.5	22.0

\*Flow exceeds recommended maximum use a greater temperature rise or consult manufacturer. Cupro-Nickel heat exchanger should be considered.

## BOILER TRIM & CONTROLS

<b>Main Gas Valve</b>	Honeywell (2) V8944B 1-1/2"	<b>High Limit (HB/HW)</b>	Honeywell L4008E
<b>Firing Valve</b>	Honeywell (2) B200T1041 1-1/2"	<b>Ignition Control</b>	Honeywell S8610M
<b>Safety Valve</b>	Honeywell (2) V88A 2"	<b>Solenoid Valve w/Reg.</b>	CV100
<b>Operating Control (HB)</b>	Honeywell L4008A - On/Off	<b>Relief Valve - HW</b>	3/4" x 1" set @125 psi
<b>Operating Control (HW)</b>	Honeywell L6008A - On/Off	<b>Relief Valve - HB</b>	1-1/4" x 1-1/2" set @ 50 psi
<b>Operating Control (HB/HW)</b>	Honeywell L6008G - 2 Stg.	<b>Flow Switch</b>	TACO IFS-1
<b>Operating Control (HB/HW)</b>	Tekmar BTC- 4PA- 4 Stg.		

## RECOVERY CAPACITY

40°F	22°C	60°F	33°C	80°F	44°C	100°F	56°C	120°F	67°C	140°F	78°C
8860	33537	5906	22358	4430	16769	3544	13415	2953	11179	2531	9582

## ASME

<b>ASME Sect IV Htg Surface</b>	294.71 Sq. Ft. / 27.38 Sq. M.	<b>Design Data</b>	Max. 160 psig & 250°F
<b>Water Volume</b>	5.2 gal / 19.7 l (liters)		

REP FIRM \_\_\_\_\_  
SUBMITTED BY \_\_\_\_\_  
JOB NAME \_\_\_\_\_  
ARCHITECT \_\_\_\_\_  
ENGINEER \_\_\_\_\_  
CONTRACTOR \_\_\_\_\_  
DATE \_\_\_\_\_

# 8800 3600

### Category I Appliance

Must be vented into a negative pressure vent system



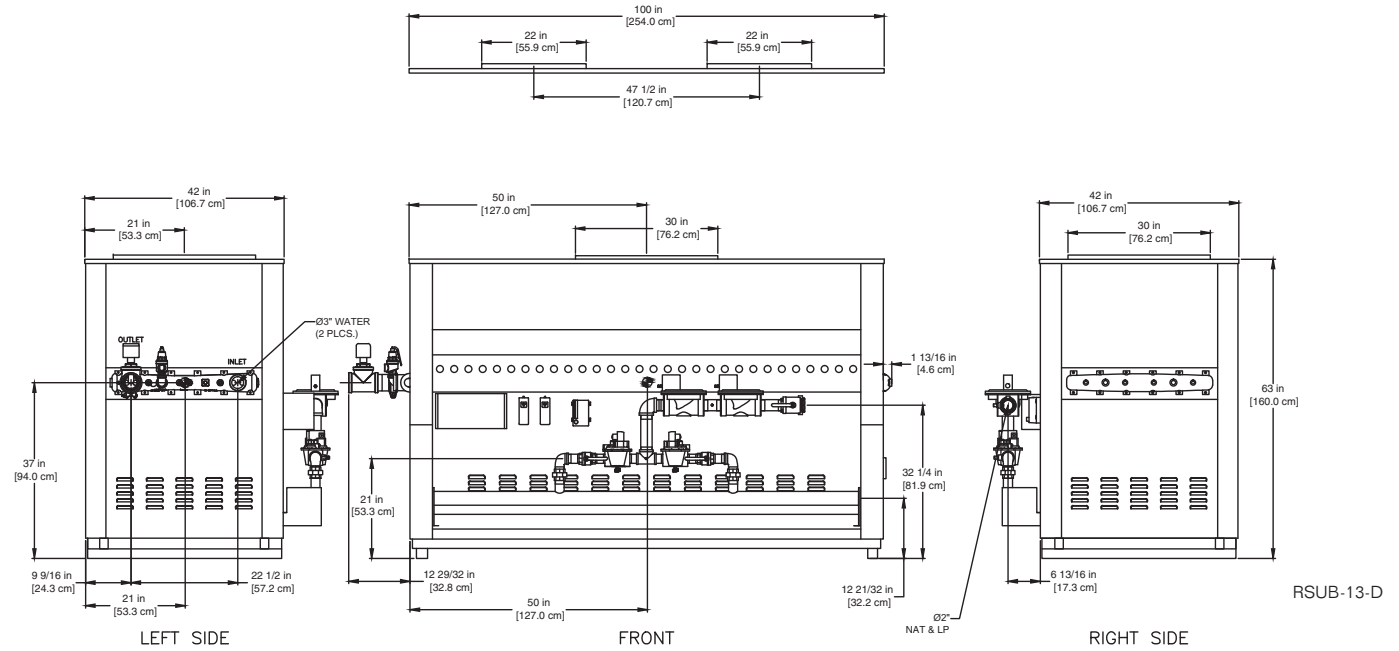
A Division of Mestek, Inc.  
Westfield, MA 01085  
(413) 568-9571

### CODE OPTIONS

<b>CSD-1</b>	UTC 1003-616A Ignition Control UTC Lockout/Reset Control Manual Reset LWCO
<b>FM</b>	RM7890A Flame Safeguard (2) Motorized Valves (One w/POC) Normally Open Vent Valve Manual Reset LWCO
<b>IRI</b>	IRI requirements as listed in IM.4.1.1 (two motorized safety valves with N.O.V.V. no longer applies to listed atmospheric gas boilers). The addition of CSD-1 option satisfies IRI requirements for the 8800 Series.
<b>Kentucky</b>	200°F Maximum Operating Control and High Limit

**NOTE:**

Dimensions are approximate and should not be used to "rough-in" equipment.  
 \* Add circulator amps.  
 \*\*For incoming gas pressures lower than 6" WC natural or 11" WC propane, consult factory.



### AGA CERTIFIED RATINGS & CAPACITIES

<b>Fuel Type</b>	Natural/Propane Gas	<b>Boiler FLA</b>	1*
<b>Input BTU/hr.</b>	4,000,000 / 1,172 kW	<b>Min. Gas Pressure Required</b>	6" WC**
<b>Output BTU/hr.</b>	3,280,000 / 961 kW	<b>Max. Gas Pressure Allowed</b>	14" WC
<b>Electrical Requirements</b>	120VAC / 1 ph / 60 hz	<b>Operating Weight</b>	1808 lbs. / 820 kg.

### TEMPERATURE RISE / PRESSURE DROP

35°F / 19.4°C			
Flow Rate		Pressure Drop	
GPM	L/s	Ft	kPa
187.4*	11.8	10.1	29.6

\*Flow exceeds recommended maximum use a greater temperature rise or consult manufacturer. Cupro-Nickel heat exchanger should be considered.

### BOILER TRIM & CONTROLS

<b>Main Gas Valve</b>	Honeywell (2) V8944B 1-1/2"	<b>High Limit (HB/HW)</b>	Honeywell L4008E
<b>Firing Valve</b>	Honeywell (2) B200T1058 1-1/2"	<b>Ignition Control</b>	Honeywell S8610M
<b>Safety Valve</b>	Honeywell (2) V88A 2"	<b>Solenoid Valve w/Reg.</b>	CV100
<b>Operating Control (HB)</b>	Honeywell L4008A - On/Off	<b>Relief Valve - HW</b>	1" x 1" set @125 psi
<b>Operating Control (HW)</b>	Honeywell L6008A - On/Off	<b>Relief Valve - HB</b>	1-1/2" x 2" set @ 50 psi
<b>Operating Control (HB/HW)</b>	Honeywell L6008G - 2 Stg.	<b>Flow Switch</b>	TACO IFS-1
<b>Operating Control (HB/HW)</b>	Tekmar BTC- 4PA- 4 Stg.		

### RECOVERY CAPACITY

40°F	22°C	60°F	33°C	80°F	44°C	100°F	56°C	120°F	67°C	140°F	78°C
9844	37263	6563	24842	4922	18632	3938	14905	3281	12421	2813	10647

### ASME

<b>ASME Sect IV Htg Surface</b>	326.0 Sq. Ft. / 30.29 Sq. M.	<b>Design Data</b>	Max. 160 psig & 250°F
<b>Water Volume</b>	5.6 gal / 21.2 l (liters)		

**REP FIRM** \_\_\_\_\_  
**SUBMITTED BY** \_\_\_\_\_  
**JOB NAME** \_\_\_\_\_  
**ARCHITECT** \_\_\_\_\_  
**ENGINEER** \_\_\_\_\_  
**CONTRACTOR** \_\_\_\_\_  
**DATE** \_\_\_\_\_

# 8800 4000

**Category I Appliance**

Must be vented into a negative pressure vent system



A Division of Mestek, Inc.  
 Westfield, MA 01085  
 (413) 568-9571