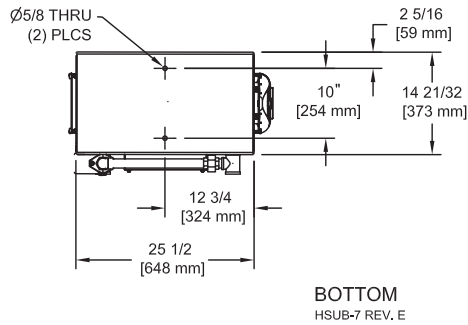
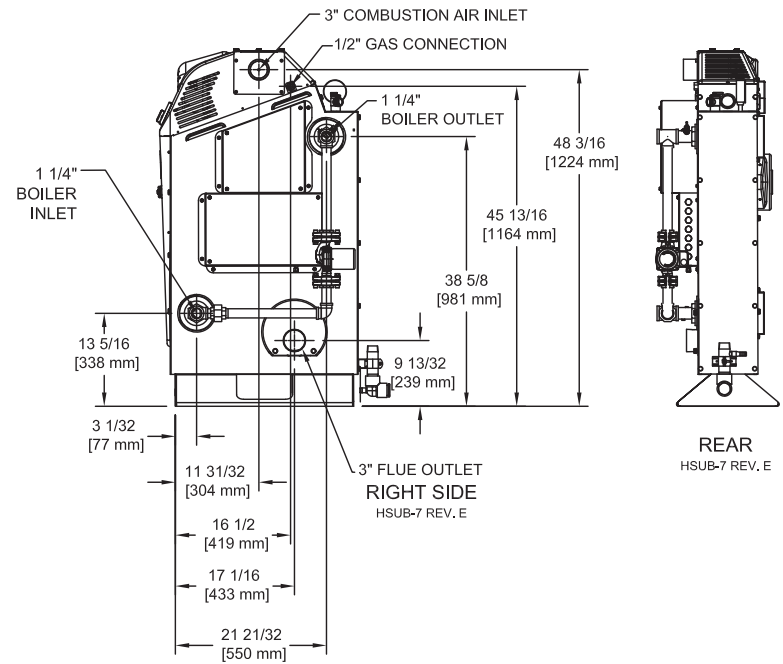
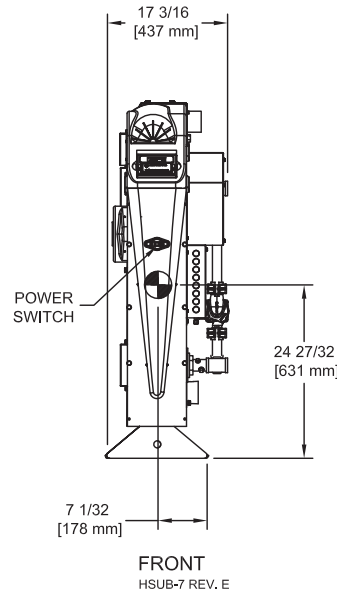
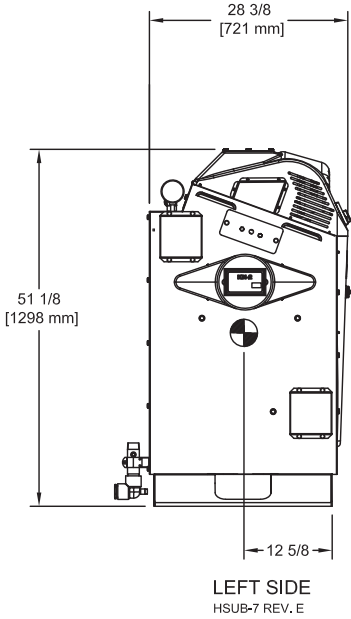


NOTE: Dimensions are approximate and should not be used to "rough-in" equipment.

* Add circulator amps



REP FIRM _____
SUBMITTED BY _____
JOB NAME _____
ARCHITECT _____
ENGINEER _____
CONTRACTOR _____
DATE _____

KN-2

Category II or Category IV Appliance
(see Installation and Operation Manual for venting information)

KN
SERIES

A Division of Mestek, Inc.
Westfield, MA 01085
(413) 564-5515



A.G.A. CERTIFIED RATINGS & CAPACITIES

Fuel Type	Natural Gas / Propane	Boiler FLA	2.5 A*
Input BTU/hr.	199 MBH/ 59 KW	Min. Gas Pressure Required	2" W.C.
Output BTU/hr.	184 MBH/ 54 KW	Max. Gas Pressure Allowed	14" W.C.
Boiler HP	5.5	Water Volume	2.8 gal.
Electrical Requirements	120VAC/ 60 hz/ 1PH	Operating Weight	563 lbs. / 256 kg.

BOILER TRIM & CONTROLS

Main Gas Valve	Dungs GB-WND	Air Switch	Cleveland NS-2
Ignition Control	Fenwal 35-60	Blower Motor	Ametek
Operating Control	HeatNet™	Relief Valve	30, 50, 75 & 100 PSI
High Limit	P-SW-13004-X		

* Add circulator amps

TEMPERATURE RISE / PRESSURE DROP (Based on Full Input)

20° F / 11.1° C		40° F / 22.2° C		60° F / 33.3° C		80° F / 44.4° C		100° F / 55.5° C			
Flow Rate		Pressure Drop		Flow Rate		Pressure Drop		Flow Rate		Pressure Drop	
GPM	L/s	Ft	kPa	GPM	L/s	Ft	kPa	GPM	L/s	Ft	kPa
18.4	1.16	.77	2.27	9.2	.58	.19	.56	6.13	.38	.08	.24
4.6	.29	.05	.15	3.6	.23	.03	.09				

Flow GPM		Temp. Rise (°F)		Vent Length (Equiv. Ft.)		Air Inlet Length (Equiv. Ft.)	
Min	Max	Min	Max	Min	Max	Min	Max
3.6	36	20	100	6	100	0	100

** Min/Max delta t reflects boiler operation at full input. For applications requiring operation above/below these parameters please consult factory.

A.S.M.E.

ASME Sect IV Fire Side Htg Surface	11.20 Sq. Ft. / 1.04 Sq. M.	Design Data	100 PSI & 250° F
ASME Sect IV Water Side Htg Surface	4.84 Sq. Ft. / .455 Sq. M.		
CV. GPM (1PSID)	20		

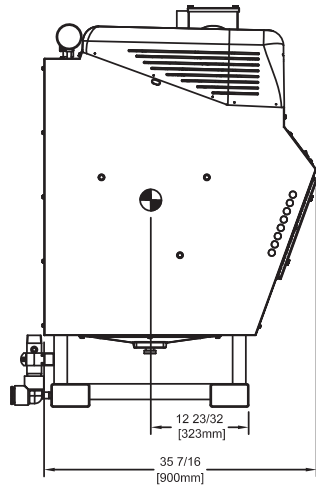
KN-2

CODE OPTIONS

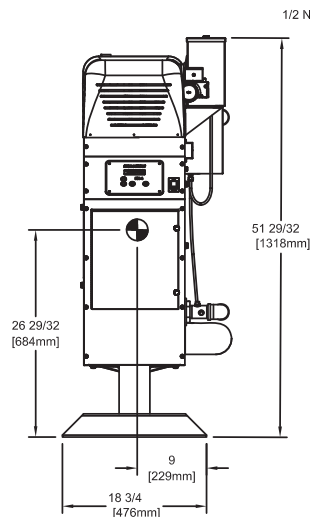
CSD-1	STANDARD
--------------	----------

NOTE: Dimensions are approximate and should not be used to "rough-in" equipment.

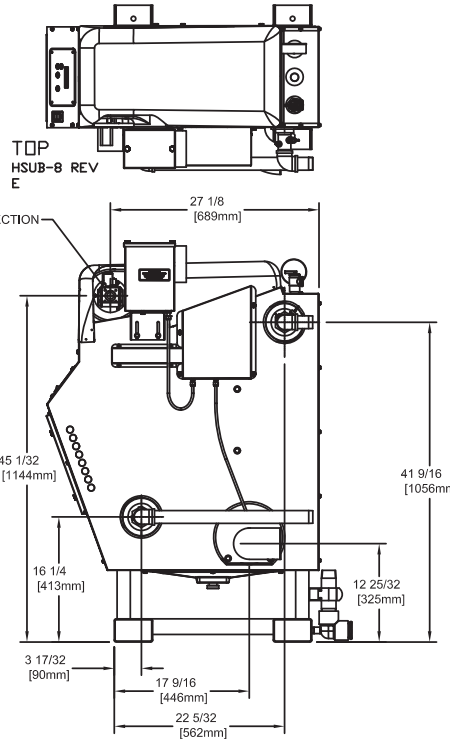
* Add circulator amps



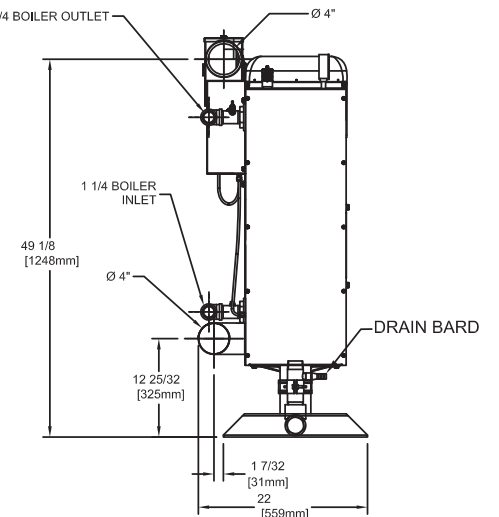
LEFT SIDE
HSUB-8 REV E



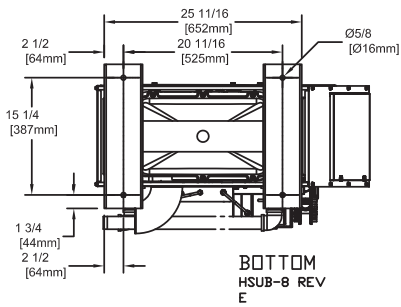
FRONT
HSUB-8 REV E



RIGHT SIDE
HSUB-8 REV E



REAR
HSUB-8 REV E



BOTTOM
HSUB-8 REV E

REP FIRM _____
SUBMITTED BY _____
JOB NAME _____
ARCHITECT _____
ENGINEER _____
CONTRACTOR _____
DATE _____

KN-4

Category II or Category IV Appliance
(see Installation and Operation Manual for venting information)



A Division of Mestek, Inc.
Westfield, MA 01085
(413) 564-5515



A.G.A. CERTIFIED RATINGS & CAPACITIES

Fuel Type	Natural Gas / Propane	Boiler FLA	5 A*
Input BTU/hr.	399 MBH/ 117 KW	Min. Gas Pressure Required	2" W.C.
Output BTU/hr.	369 MBH/ 108 KW	Max. Gas Pressure Allowed	14" W.C.
Boiler HP	11.0	Water Volume	5.6 gal.
Electrical Requirements	120VAC/ 60 hz/ 1PH	Operating Weight	827 lbs. / 375 kg.

BOILER TRIM & CONTROLS

Main Gas Valve	Dungs GB-WND	Air Switch	Cleveland NS-2
Ignition Control	Fenwal 35-60	Blower Motor	Ametek
Operating Control	HeatNet™	Relief Valve	30, 50, 75 & 100 PSI
High Limit	P-SW-1300-4-X		

* Add circulator amps

TEMPERATURE RISE / PRESSURE DROP (Based on Full Input)

20° F / 11.1° C		40° F / 22.2° C		60° F / 33.3° C		80° F / 44.4° C		100° F / 55.5° C			
Flow Rate		Pressure Drop		Flow Rate		Pressure Drop		Flow Rate		Pressure Drop	
GPM	L/s	Ft	kPa	GPM	L/s	Ft	kPa	GPM	L/s	Ft	kPa
38.0	2.39	1.54	4.54	18.5	1.16	.38	1.12	12.3	.77	.16	.47
9.25	.58	.092	.27	7.2	.46	.06	.18				

Flow GPM		Temp. Rise (°F)		Vent Length (Equiv. Ft.)		Air Inlet Length (Equiv. Ft.)	
Min	Max	Min	Max	Min	Max	Min	Max
7.2	72	20	100	6	100	0	100

** Min/Max delta t reflects boiler operation at full input. For applications requiring operation above/below these parameters please consult factory.

A.S.M.E.

ASME Sect IV Fire Side Htg Surface	22.83 Sq. Ft. / 2.12 Sq. M.	Design Data	100 PSI & 250° F
ASME Sect IV Water Side Htg Surface	9.68 Sq. Ft. / .90 Sq. M.		
CV. GPM (1PSID)	40		

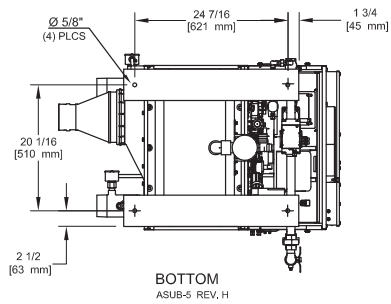
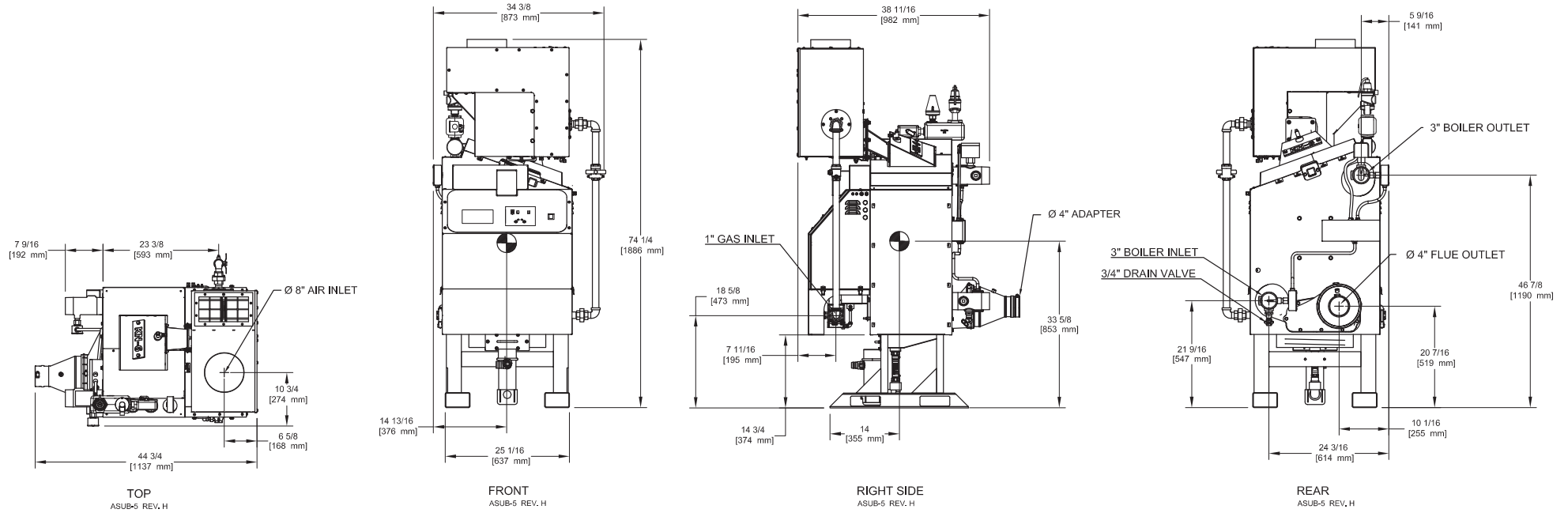
KN-4

CODE OPTIONS

CSD-1	STANDARD
--------------	----------

NOTE: Dimensions are approximate and should not be used to "rough-in" equipment.

* Add circulator amps



REP FIRM _____
SUBMITTED BY _____
JOB NAME _____
ARCHITECT _____
ENGINEER _____
CONTRACTOR _____
DATE _____

KN-6

Category II or Category IV Appliance
(see Installation and Operation Manual for venting information)

KN SERIES

A Division of Mestek, Inc.
Westfield, MA 01085
(413) 564-5515



A.G.A. CERTIFIED RATINGS & CAPACITIES

Fuel Type	Natural/LP Gas	Boiler FLA	5.2 A*
Input BTU/hr.	600 MBH/ 176 KW	Min. Gas Pressure Required	3" W.C.
Output BTU/hr.	556 MBH/ 163 KW	Max. Gas Pressure Allowed	14" W.C.
Boiler HP	16.6	Water Volume	8.4 gal.
Electrical Requirements	120VAC/ 60 hz/ 1PH	Operating Weight	1150 lbs. / 522 kg.

BOILER TRIM & CONTROLS

Main Gas Valve	Dungs MBC	Air Switch	Huba
Firing Valve	1" Apollo	Flow Switch	ITT FS251
Ignition Control	Honeywell RM7895C	Blocked Flue Switch	Cleveland NS2
Operating Control	HeatNet™	Blower Motor	Ametek
High Limit	Honeywell L4006E	L.W.C.O.	750P-MT-120
Main Ball Valve	1" Apollo	Relief Valve	30, 50, 75 & 100 PSI
Pilot Cock	1/4" Conbraco	Pilot Regulator	Maxitrol RV12LT

* Add circulator amps

TEMPERATURE RISE / PRESSURE DROP (Based on Full Input)

20° F / 11.1° C		40° F / 22.2° C		60° F / 33.3° C		80° F / 44.4° C		100° F / 55.5° C			
Flow Rate	Pressure Drop	Flow Rate	Pressure Drop	Flow Rate	Pressure Drop	Flow Rate	Pressure Drop	Flow Rate	Pressure Drop		
GPM	L/s	Ft	kPa	GPM	L/s	Ft	kPa	GPM	L/s	Ft	kPa
55.6	3.51	1.98	5.83	27.8	1.75	.50	1.47	18.5	1.17	.22	.65
14	.88	.12	.35	10	.70	.08	.24				

Flow GPM		Temp. Rise** (°F)		Vent Length (Equiv. Ft.)		Air Inlet Length (Equiv. Ft.)	
Min	Max	Min	Max	Min	Max	Min	Max
10	100	20	100	6	120	0	120

** Min/Max delta t reflects boiler operation at full input. For applications requiring operation above/below these parameters please consult factory.

A.S.M.E.

ASME Sect IV Fire Side Htg Surface	34.47 Sq. Ft. / 3.20 Sq. M.	Design Data	100 PSI & 250° F
ASME Sect IV Water Side Htg Surface	14.52 Sq. Ft. / 1.35 Sq. M.		
CV. GPM (1PSID)	60		

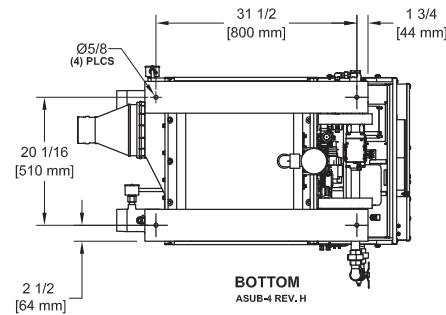
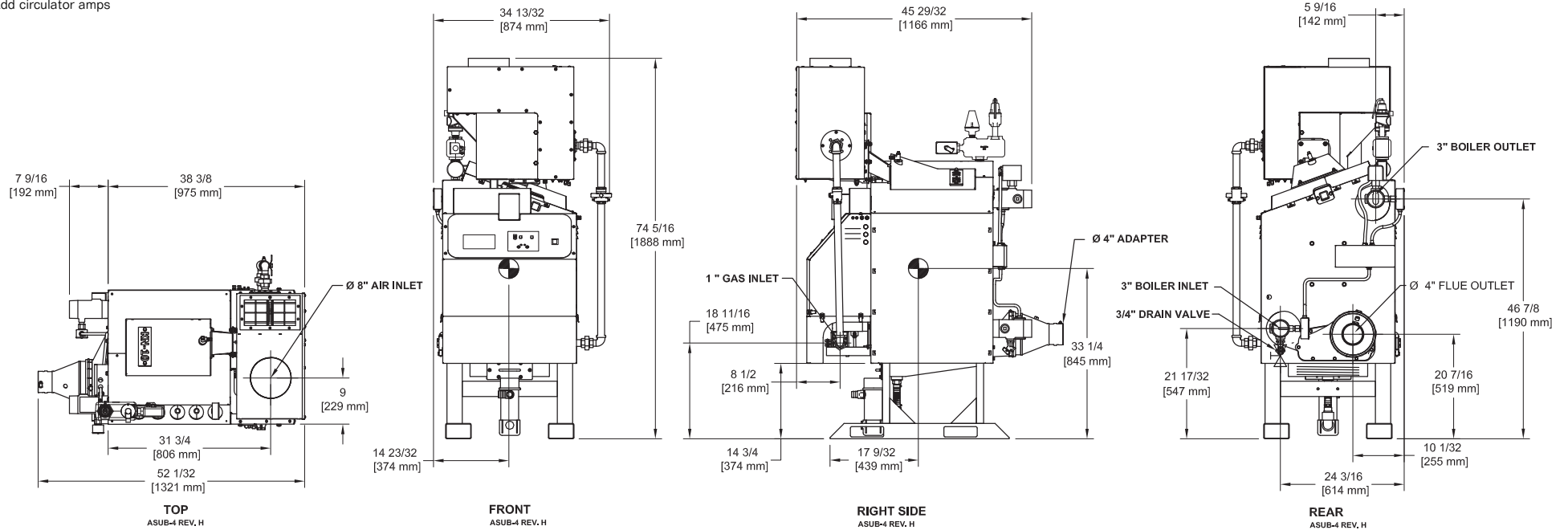
KN-6

CODE OPTIONS

CSD-1	STANDARD
--------------	----------

NOTE: Dimensions are approximate and should not be used to "rough-in" equipment.

*Add circulator amps



REP FIRM	_____	<h1>KN-10</h1> <p>Category II or Category IV Appliance (see Installation and Operation Manual for venting information)</p>
SUBMITTED BY	_____	
JOB NAME	_____	
ARCHITECT	_____	
ENGINEER	_____	
CONTRACTOR	_____	
DATE	_____	 <p>A Division of Mestek, Inc. Westfield, MA 01085 (413) 564-5515</p>



A.G.A. CERTIFIED RATINGS & CAPACITIES

Fuel Type	Natural/LP Gas	Boiler FLA	6.6 A*
Input BTU/hr.	1000 MBH/ 293 KW	Min. Gas Pressure Required	3" W.C.
Output BTU/hr.	927 MBH/ 271 KW	Max. Gas Pressure Allowed	14" W.C.
Boiler HP	27.7	Water Volume	14 gal.
Electrical Requirements	120VAC/ 60 hz/ 1PH	Operating Weight	1557 lbs. / 707 kg.

BOILER TRIM & CONTROLS

Main Gas Valve	Dungs MBC	Air Switch	Huba
Firing Valve	1 1/4" Apollo	Flow Switch	ITT FS251
Ignition Control	Honeywell RM7895C	Blocked Flue Switch	Cleveland NS2
Operating Control	HeatNet™	Blower Motor	Ametek
High Limit	Honeywell L4006E	L.W.C.O.	750P-MT-120
Main Ball Valve	1 1/4" Apollo	Relief Valve	30, 50, 75 & 100 PSI
Pilot Cock	1/4" Conbraco	Pilot Regulator	Maxitrol RV12LT

*Add circulator amps

TEMPERATURE RISE / PRESSURE DROP (Based on Full Input)

20° F / 11.1° C		40° F / 22.2° C		60° F / 33.3° C		80° F / 44.4° C		100° F / 55.5° C			
Flow Rate	Pressure Drop	Flow Rate	Pressure Drop	Flow Rate	Pressure Drop	Flow Rate	Pressure Drop	Flow Rate	Pressure Drop		
GPM	L/s	Ft	kPa	GPM	L/s	Ft	kPa	GPM	L/s	Ft	kPa
92.7	5.85	1.98	5.83	46.9	2.96	.50	1.47	30.1	1.90	.24	.71
		23.2	1.46	.14	.41	15	1.17	.09	.27		

Flow GPM		Temp. Rise** (°F)		Vent Length (Equiv. Ft.)		Air Inlet Length (Equiv. Ft.)	
Min	Max	Min	Max	Min	Max	Min	Max
15	150	20	100	6	120***	0	120

** Min/Max delta t reflects boiler operation at full input. For applications requiring operation above/below these parameters please consult factory.

*** A maximum equivalent length of 80 ft. utilizing 4" vent diameter and 120 ft. utilizing 5" vent diameter.

A.S.M.E.

ASME Sect IV Fire Side Htg Surface	57.74 Sq. Ft. / 5.36 Sq. M.	Design Data	100 PSI & 250° F
ASME Sect IV Water Side Htg Surface	24.20 Sq. Ft. / 2.25 Sq. M.		
CV. GPM (1PSID)	100		

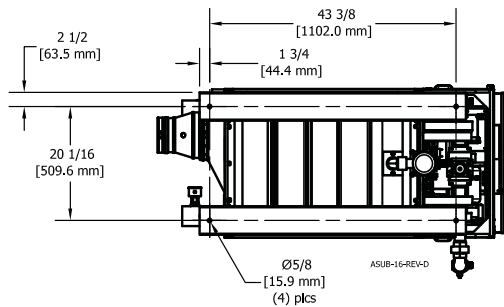
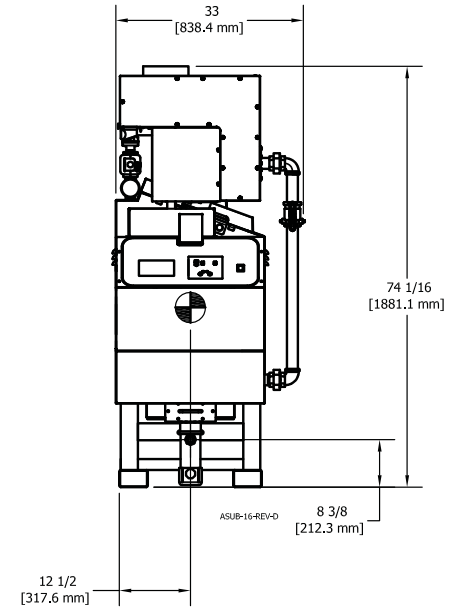
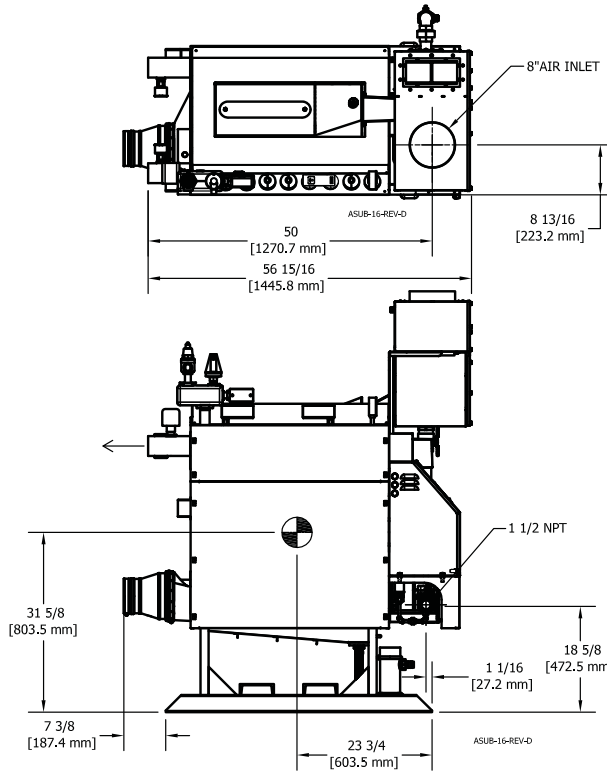
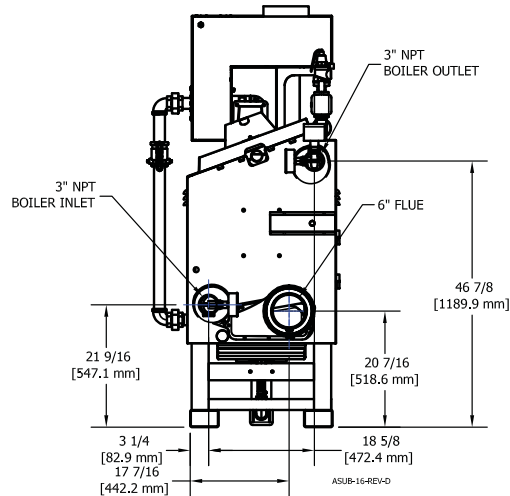
KN-10

CODE OPTIONS

CSD-1	STANDARD
--------------	----------

NOTE: Dimensions are approximate and should not be used to "rough-in" equipment.

*Add circulator amps



REP FIRM _____
 SUBMITTED BY _____
 JOB NAME _____
 ARCHITECT _____
 ENGINEER _____
 CONTRACTOR _____
 DATE _____

KN-16

Category II or Category IV Appliance
 (see Installation and Operation Manual for venting information)



A Division of Mestek, Inc.
 Westfield, MA 01085
 (413) 564-5515



A.G.A. CERTIFIED RATINGS & CAPACITIES

Fuel Type	Natural/LP Gas	Boiler FLA	7 A*
Input BTU/hr.	1600 MBH/ 469 KW	Min. Gas Pressure Required	3" W.C.
Output BTU/hr.	1483 MBH/ 435 KW	Max. Gas Pressure Allowed	14" W.C.
Boiler HP	44.3	Water Volume	22.4 gal.
Electrical Requirements	208/230VAC60hz/1PH (with neutral)	Operating Weight	2360 lbs. / 1070 kg.

BOILER TRIM & CONTROLS

Main Gas Valve	Dungs MBC	Air Switch	Huba
Firing Valve	1 1/2" Apollo	Flow Switch	ITT FS251
Ignition Control	Honeywell RM7895C	Blocked Flue Switch	Cleveland NS2
Operating Control	HeatNet™	Blower Motor	Ametek
High Limit	Honeywell L4006E	L.W.C.O.	750P-MT-120
Main Ball Valve	1 1/2" Apollo	Relief Valve	30, 50, 75 & 100 PSI
Pilot Cock	1/4" Conbraco	Pilot Regulator	Maxitrol RV12LT

*Add circulator amps

TEMPERATURE RISE / PRESSURE DROP (Based on Full Input)

20° F / 11.1° C		40° F / 22.2° C		60° F / 33.3° C		80° F / 44.4° C		100° F / 55.5° C			
Flow Rate	Pressure Drop	Flow Rate	Pressure Drop	Flow Rate	Pressure Drop	Flow Rate	Pressure Drop	Flow Rate	Pressure Drop		
GPM	L/s	Ft	kPa	GPM	L/s	Ft	kPa	GPM	L/s	Ft	kPa
145.1	9.15	1.9	5.59	75	4.73	.51	1.50	50	3.16	.23	.68
37	2.33	.12	.35	30	1.87	.08	.24				

Flow GPM		Temp. Rise** (°F)		Vent Length (Equiv. Ft.)		Air Inlet Length (Equiv. Ft.)	
Min	Max	Min	Max	Min	Max	Min	Max
24	240	20	100	6	120	0	120

** Min/Max delta t reflects boiler operation at full input. For applications requiring operation above/below these parameters please consult factory.

A.S.M.E.

ASME Sect IV Fire Side Htg Surface	92.64 Sq. Ft. / 8.61 Sq. M.	Design Data	100 PSI & 250° F
ASME Sect IV Water Side Htg Surface	38.72 Sq. Ft. / 3.60 Sq. M.		
CV. GPM (1PSID)	160		

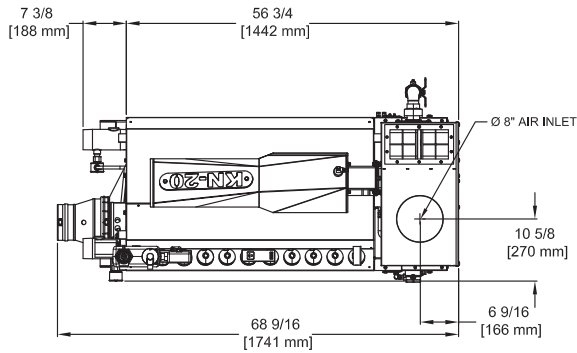
KN-16

CODE OPTIONS

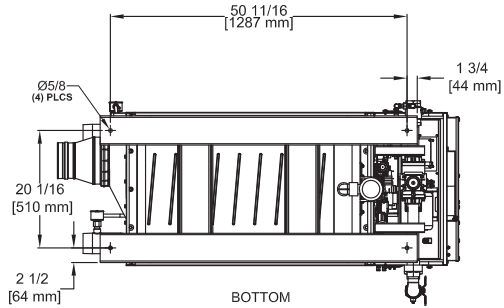
CSD-1	STANDARD
--------------	----------

NOTE: Dimensions are approximate and should not be used to "rough-in" equipment.

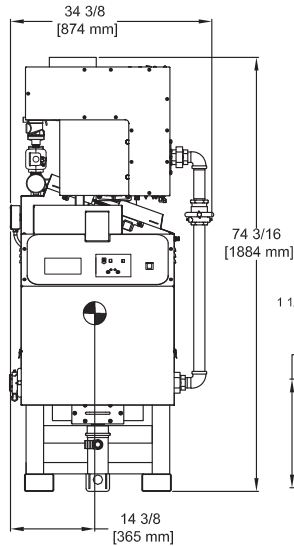
*Add circulator amps



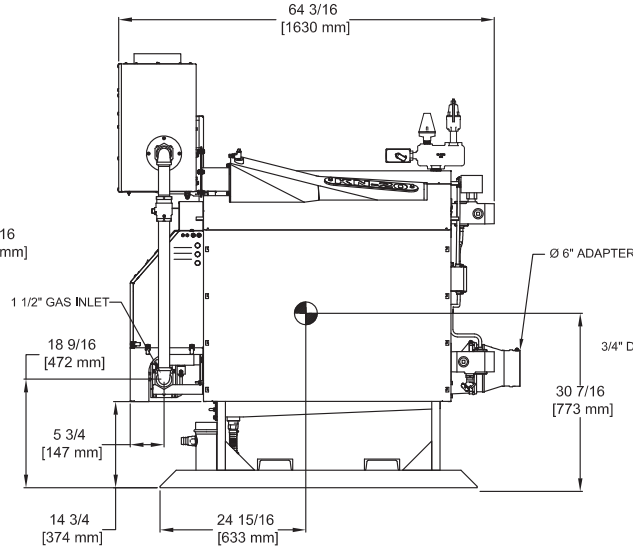
TOP
ASUB-3 REV. H



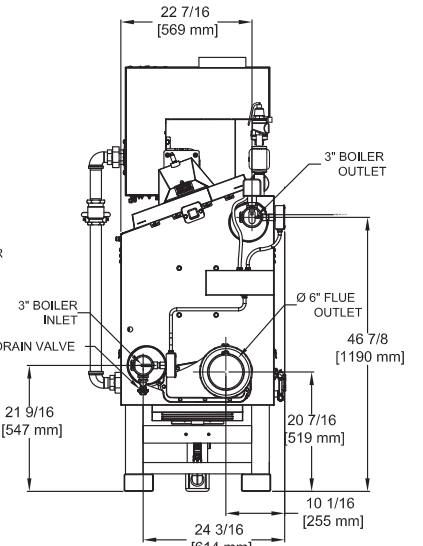
BOTTOM
ASUB-3 REV. H



FRONT
ASUB-3 REV. H



RIGHT SIDE
ASUB-3 REV. H



REAR
ASUB-3 REV. H



CENTER OF GRAVITY

REP FIRM _____
SUBMITTED BY _____
JOB NAME _____
ARCHITECT _____
ENGINEER _____
CONTRACTOR _____
DATE _____

KN-20

Category II or Category IV Appliance
(see Installation and Operation Manual for venting information)



A Division of Mestek, Inc.
Westfield, MA 01085
(413) 564-5515



A.G.A. CERTIFIED RATINGS & CAPACITIES

Fuel Type	Natural/LP Gas	Boiler FLA	7 A*
Input BTU/hr.	1999 MBH/ 586 KW	Min. Gas Pressure Required	3" W.C.
Output BTU/hr.	1853 MBH/ 543 KW	Max. Gas Pressure Allowed	14" W.C.
Boiler HP	55.4	Water Volume	28 gal.
Electrical Requirements	208/230VAC60hz/1PH (with neutral)	Operating Weight	2714 lbs. / 1232 kg.

BOILER TRIM & CONTROLS

Main Gas Valve	Dungs MBC	Air Switch	Huba
Firing Valve	1 1/2" Apollo	Flow Switch	ITT FS251
Ignition Control	Honeywell RM7895C	Blocked Flue Switch	Cleveland NS2
Operating Control	HeatNet™	Blower Motor	Ametek
High Limit	Honeywell L4006E	L.W.C.O.	750P-MT-120
Main Ball Valve	1 1/2" Apollo	Relief Valve	30, 50, 75 & 100 PSI
Pilot Cock	1/4" Conbraco	Pilot Regulator	Maxitrol RV12LT

*Add circulator amps

TEMPERATURE RISE / PRESSURE DROP (Based on Full Input)

20° F / 11.1° C		40° F / 22.2° C		60° F / 33.3° C		80° F / 44.4° C		100° F / 55.5° C			
Flow Rate	Pressure Drop	Flow Rate	Pressure Drop	Flow Rate	Pressure Drop	Flow Rate	Pressure Drop	Flow Rate	Pressure Drop		
GPM	L/s	Ft	kPa	GPM	L/s	Ft	kPa	GPM	L/s	Ft	kPa
185.5	11.71	2.2	6.48	92.7	5.85	.55	1.62	61.8	3.90	.34	.84
46.4	2.93	.14	.41	37.1	2.34	.09	.27				

Flow GPM		Temp. Rise** (°F)		Vent Length (Equiv. Ft.)		Air Inlet Length (Equiv. Ft.)	
Min	Max	Min	Max	Min	Max	Min	Max
30	300	20	100	6	120	0	80

** Min/Max delta t reflects boiler operation at full input. For applications requiring operation above/below these parameters please consult factory.

A.S.M.E.

ASME Sect IV Fire Side Htg Surface	115.91 Sq. Ft. / 10.77 Sq. M.	Design Data	100 PSI & 250° F
ASME Sect IV Water Side Htg Surface	48.40 Sq. Ft. / 4.50 Sq. M.		
CV. GPM (1PSID)	190		

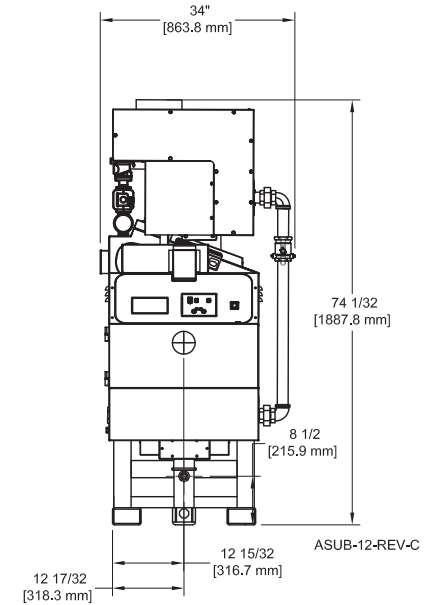
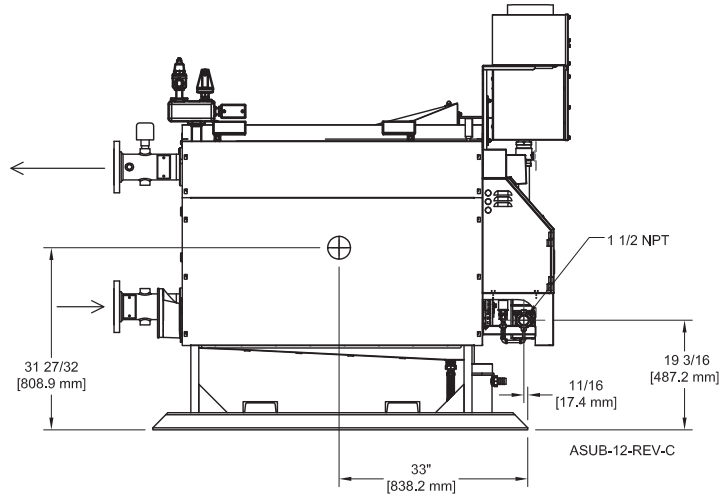
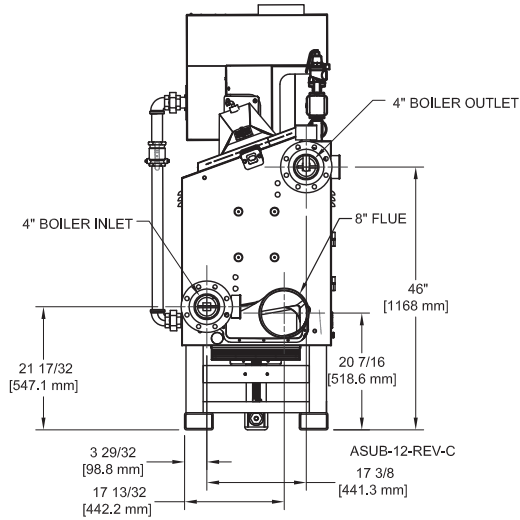
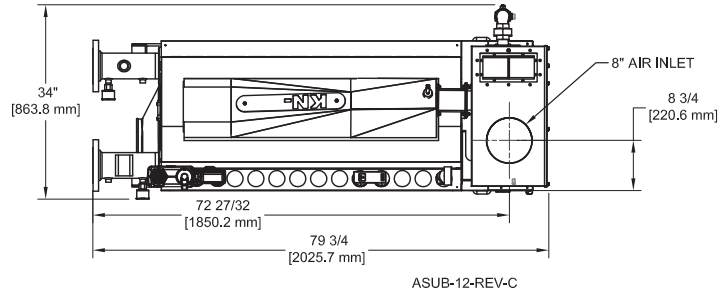
KN-20

CODE OPTIONS

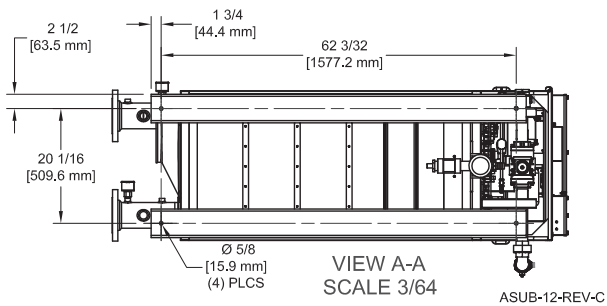
CSD-1	STANDARD
--------------	----------

NOTE: Dimensions are approximate and should not be used to "rough-in" equipment.

*Add circulator amps



⊕ CENTER OF GRAVITY



REP FIRM _____
SUBMITTED BY _____
JOB NAME _____
ARCHITECT _____
ENGINEER _____
CONTRACTOR _____
DATE _____

KN-26

Category II or Category IV Appliance
(see Installation and Operation Manual for venting information)

KN SERIES A Division of Mestek, Inc.
Westfield, MA 01085
(413) 564-5515



A.G.A. CERTIFIED RATINGS & CAPACITIES

Fuel Type	Natural/LP Gas	Boiler FLA	6.3 A*
Input BTU/hr.	2600 MBH/ 762 KW	Min. Gas Pressure Required	3" W.C.
Output BTU/hr.	2410 MBH/ 706 KW	Max. Gas Pressure Allowed	14" W.C.
Boiler HP	72	Water Volume	36.4 gal.
Electrical Requirements	208/230VAC/60 hz/3PH	Operating Weight	3425 lbs. / 1555 kg.

BOILER TRIM & CONTROLS

Main Gas Valve	Dungs MBC	Air Switch	Huba
Firing Valve	1 1/2" Apollo	Flow Switch	ITT FS251
Ignition Control	Honeywell RM7895C	Blocked Flue Switch	Cleveland NS2
Operating Control	HeatNet™	Blower Motor	Ametek
High Limit (Manual Reset)	Honeywell L4006E	L.W.C.O.	750P-MT-120
High Limit (Auto Reset)	Honeywell L4006A	Relief Valve	30, 50, 75 & 100 PSI
Main Ball Valve	1 1/2" Apollo	Pilot Regulator	Maxitrol RV12LT
Pilot Cock	1/4" Conbraco		

*Add circulator amps

TEMPERATURE RISE / PRESSURE DROP (Based on Full Input)

20° F / 11.1° C		40° F / 22.2° C		60° F / 33.3° C		80° F / 44.4° C		100° F / 55.5° C			
Flow Rate	Pressure Drop	Flow Rate	Pressure Drop	Flow Rate	Pressure Drop	Flow Rate	Pressure Drop	Flow Rate	Pressure Drop		
GPM	L/s	Ft	kPa	GPM	L/s	Ft	kPa	GPM	L/s	Ft	kPa
241	15.21	2.33	6.86	120	7.57	.58	1.71	80.0	5.05	.26	.77
60.0	3.79	.15	.44	38	3.04	.09	.27				

Flow GPM		Temp. Rise** (°F)		Vent Length (Equiv. Ft.)		Air Inlet Length (Equiv. Ft.)	
Min	Max	Min	Max	Min	Max	Min	Max
38	380	20	100	6	120	0	120

** Min/Max delta t reflects boiler operation at full input. For applications requiring operation above/below these parameters please consult factory.

A.S.M.E.

ASME Sect IV Fire Side Htg Surface	150.81 Sq. Ft. / 14.01 Sq. M.	Design Data	100 PSI & 250° F
ASME Sect IV Water Side Htg Surface	62.92 Sq. Ft. / 5.85 Sq. M.		
CV. GPM (1PSID)	240		

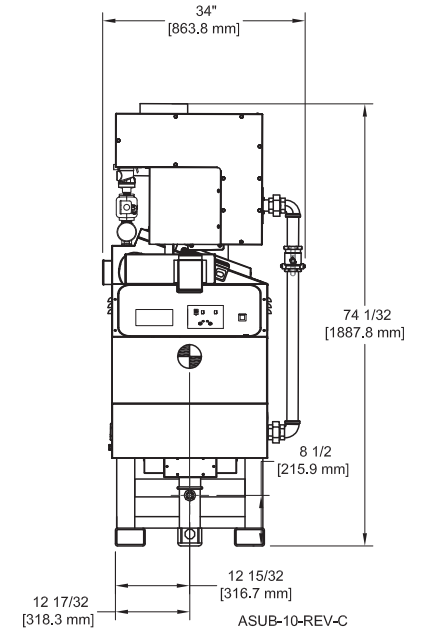
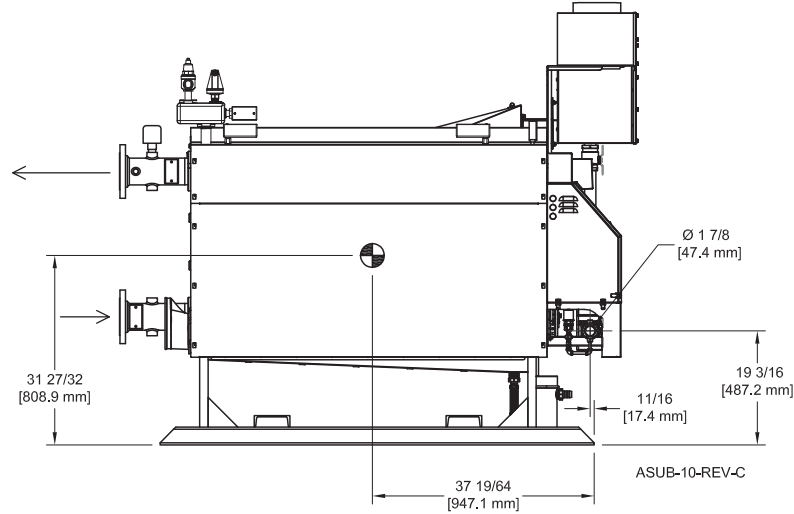
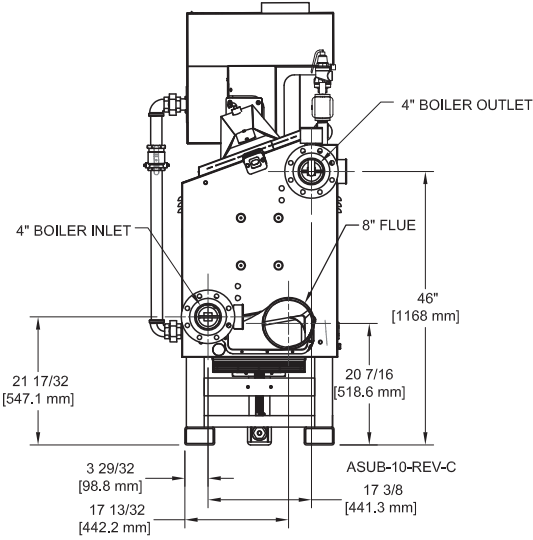
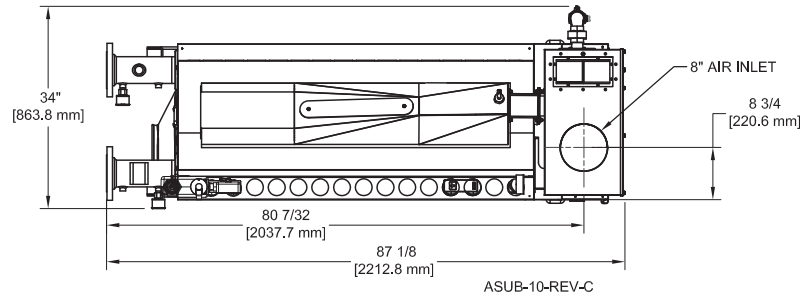
KN-26

CODE OPTIONS

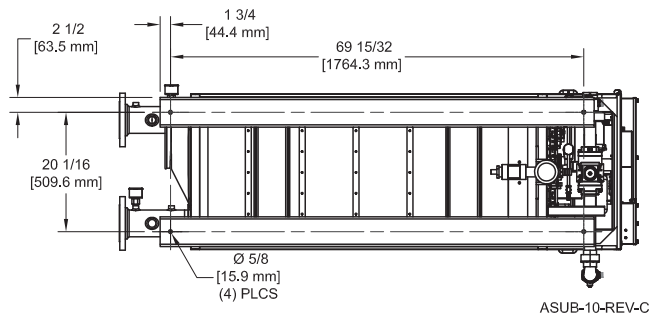
CSD-1	STANDARD
--------------	----------

NOTE: Dimensions are approximate and should not be used to "rough-in" equipment.

*Add circulator amps



⊕ CENTER OF GRAVITY



REP FIRM _____
SUBMITTED BY _____
JOB NAME _____
ARCHITECT _____
ENGINEER _____
CONTRACTOR _____
DATE _____

KN-30

Category II or Category IV Appliance
(see Installation and Operation Manual for venting information)

KN SERIES

A Division of Mestek, Inc.
Westfield, MA 01085
(413) 564-5515



A.G.A. CERTIFIED RATINGS & CAPACITIES

Fuel Type	Natural/LP Gas	Boiler FLA	6.3 A*
Input BTU/hr.	3000 MBH/ 879 KW	Min. Gas Pressure Required	3" W.C.
Output BTU/hr.	2781 MBH/ 815 KW	Max. Gas Pressure Allowed	14" W.C.
Boiler HP	83.1	Water Volume	42 gal.
Electrical Requirements	208/230VAC/60 hz/3PH	Operating Weight	3850 lbs. / 1748 kg.

BOILER TRIM & CONTROLS

Main Gas Valve	Dungs MBC	Air Switch	Huba
Firing Valve	1 1/2" Apollo	Flow Switch	ITT FS251
Ignition Control	Honeywell RM7895C	Blocked Flue Switch	Cleveland NS2
Operating Control	HeatNet™	Blower Motor	Ametek
High Limit (Manual Reset)	Honeywell L4006E	L.W.C.O.	750P-MT-120
High Limit (Auto Reset)	Honeywell L4006A	Relief Valve	30, 50, 75 & 100 PSI
Main Ball Valve	1 1/2" Apollo	Pilot Regulator	Maxitrol RV12LT
Pilot Cock	1/4" Conbraco		

*Add circulator amps

TEMPERATURE RISE / PRESSURE DROP (Based on Full Input)

20° F / 11.1° C		40° F / 22.2° C		60° F / 33.3° C		80° F / 44.4° C		100° F / 55.5° C			
Flow Rate	Pressure Drop	Flow Rate	Pressure Drop	Flow Rate	Pressure Drop	Flow Rate	Pressure Drop	Flow Rate	Pressure Drop		
GPM	L/s	Ft	kPa	GPM	L/s	Ft	kPa	GPM	L/s	Ft	kPa
278	17.54	2.31	6.81	139	8.77	.58	1.71	92.7	5.85	.25	.74
69.5	4.38	.15	.44	45	3.51	.09	.27				

Flow GPM		Temp. Rise** (°F)		Vent Length (Equiv. Ft.)		Air Inlet Length (Equiv. Ft.)	
Min	Max	Min	Max	Min	Max	Min	Max
45	450	20	100	6	120	0	120

** Min/Max delta t reflects boiler operation at full input. For applications requiring operation above/below these parameters please consult factory.

A.S.M.E.

ASME Sect IV	174.08 Sq. Ft. / 16.17 Sq. M.	Design Data	100 PSI & 250° F
Fire Side Htg Surface			
ASME Sect IV	72.60 Sq. Ft. / 6.74 Sq. M.		
Water Side Htg Surface			
CV. GPM (1PSID)	278		

KN-30