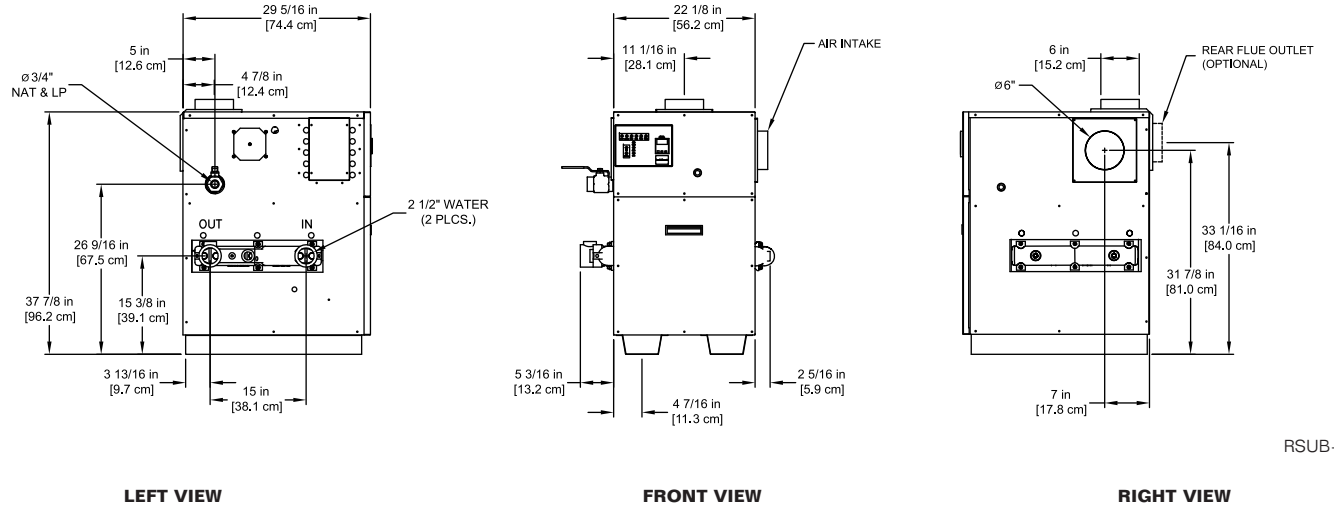


CODE OPTIONS

| | |
|-------------------------------------|---|
| CSD-1 | UTC Lockout/Reset Control Manual Reset LWCO |
| Kentucky (Water Htr Only) | 200°F Maximum Operating Control and High Limit |

NOTE: Dimensions are approximate and should not be used to "rough-in" equipment.
 * Add circulator amps.
 **For incoming gas pressures lower than 7" WC natural or 11" WC propane, consult factory.



RSUB-27-B

AGA CERTIFIED RATINGS & CAPACITIES

| | | | |
|--------------------------------|----------------------------|-----------------------------------|-------------------|
| Fuel Type | Natural/Propane Gas | Boiler FLA | 5.08* |
| Input BTU/hr. | 300,000 / 88 kW | Min. Gas Pressure Required | 6" WC** |
| Output BTU/hr. | 250,500 / 73 kW | Max. Gas Pressure Allowed | 14" WC |
| Electrical Requirements | 120VAC/ 1 ph/ 60 hz/ 6 amp | Operating Weight | 210 lbs. / 95 kg. |

TEMPERATURE RISE / PRESSURE DROP

| 15°F / 8.3°C | | 20°F / 11.1°C | | 25°F / 13.9°C | | | | | | | |
|--------------|---------------|---------------|---------------|---------------|---------------|------|-----|------|-----|------|-----|
| Flow Rate | Pressure Drop | Flow Rate | Pressure Drop | Flow Rate | Pressure Drop | | | | | | |
| GPM | L/s | Ft | kPa | GPM | L/s | Ft | kPa | GPM | L/s | Ft | kPa |
| 33.0 | 2.1 | 0.21 | 0.6 | 25.1 | 1.6 | 0.12 | 0.4 | 20.0 | 1.3 | 0.08 | 0.2 |

BOILER TRIM & CONTROLS

| | | | |
|--------------------------|--------------------------|--------------------------|---------------------------|
| Main Gas Valve | Honeywell VR8305 3/4" | Pilot Valve | Honeywell VR8205 |
| Firing Valve | Honeywell B200T1025 3/4" | Air Switch | Cleveland RSS-495 |
| Ignition Control | UTC 1003-61A | Blower Motor | 1/5 hp - FLA 3.0 |
| Operating Control | | Relief Valve - DW | 3/4" x 3/4" set @ 125 psi |
| High Limit | Honeywell L4008E | Relief Valve - DB | 3/4" x 3/4" set @ 50 psi |
| | | Flow Switch | TACO IFS-1 |

RECOVERY CAPACITY

| | | | | | | | | | | | |
|------|------|------|------|------|------|-------|------|-------|------|-------|------|
| 40°F | 22°C | 60°F | 33°C | 80°F | 44°C | 100°F | 56°C | 120°F | 67°C | 140°F | 78°C |
| 752 | 2846 | 501 | 1897 | 376 | 1423 | 301 | 1138 | 251 | 949 | 215 | 813 |

ASME

| | | | |
|---------------------------------|----------------------------|--------------------|-----------------------|
| ASME Sect IV Htg Surface | 38.0 Sq. Ft. / 3.53 Sq. M. | Design Data | Max. 160 psig & 250°F |
|---------------------------------|----------------------------|--------------------|-----------------------|

| | | |
|---------------------|-------|---|
| REP FIRM | _____ | <p>DOMINATOR 300</p> <p>Category I or Category III Appliance</p> <p>(See Installation and Operation Manual for venting information)</p> <p>RBI® A Division of Mestek, Inc. Westfield, MA 01085 (413) 568-9571</p> |
| SUBMITTED BY | _____ | |
| JOB NAME | _____ | |
| ARCHITECT | _____ | |
| ENGINEER | _____ | |
| CONTRACTOR | _____ | |
| DATE | _____ | |

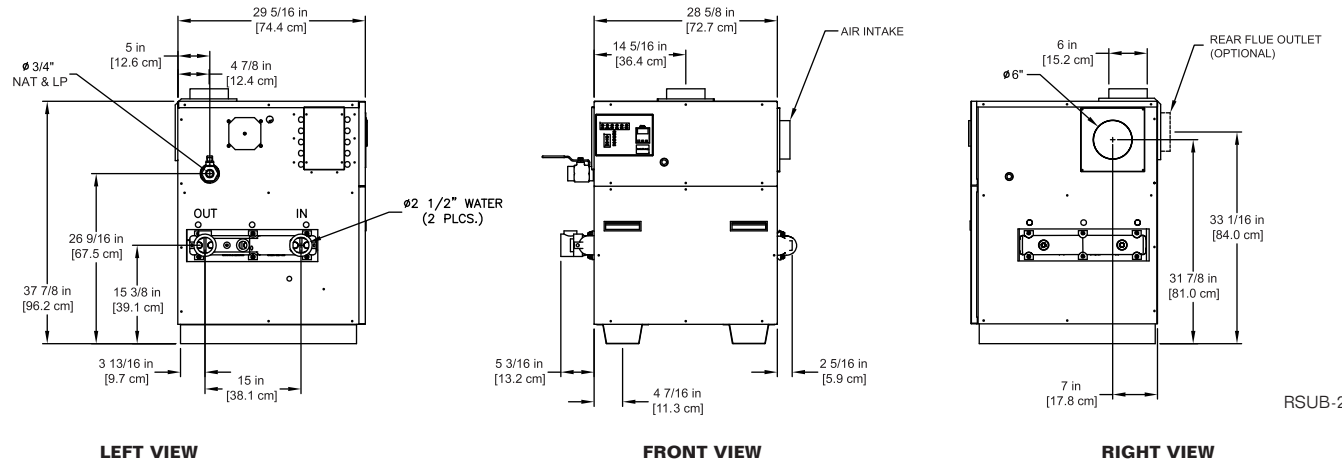
CODE OPTIONS

| | |
|-------------------------------------|---|
| CSD-1 | UTC Lockout/Reset Control Manual Reset LWCO |
| Kentucky (Water Htr Only) | 200°F Maximum Operating Control and High Limit |

NOTE: Dimensions are approximate and should not be used to "rough-in" equipment.

* Add circulator amps.

**For incoming gas pressures lower than 7" WC natural or 11" WC propane, consult factory.



RSUB-28-B

AGA CERTIFIED RATINGS & CAPACITIES

| | | | |
|--------------------------------|----------------------------|-----------------------------------|--------------------|
| Fuel Type | Natural/Propane Gas | Boiler FLA | 5.08* |
| Input BTU/hr. | 399,000 / 117 kW | Min. Gas Pressure Required | 6" WC** |
| Output BTU/hr. | 339,150 / 99 kW | Max. Gas Pressure Allowed | 14" WC |
| Electrical Requirements | 120VAC/ 1 ph/ 60 hz/ 6 amp | Operating Weight | 315 lbs. / 143 kg. |

TEMPERATURE RISE / PRESSURE DROP

| 15°F / 8.3°C | | | | 20°F / 11.1°C | | | | 25°F / 13.9°C | | | |
|--------------|-----|---------------|-----|---------------|-----|---------------|-----|---------------|-----|---------------|-----|
| Flow Rate | | Pressure Drop | | Flow Rate | | Pressure Drop | | Flow Rate | | Pressure Drop | |
| GPM | L/s | Ft | kPa | GPM | L/s | Ft | kPa | GPM | L/s | Ft | kPa |
| 45.4 | 2.9 | 0.49 | 1.5 | 34.0 | 2.1 | 0.29 | 0.9 | 27.2 | 1.7 | 0.19 | 0.6 |

BOILER TRIM & CONTROLS

| | | | |
|--------------------------|--------------------------|--------------------------|---------------------------|
| Main Gas Valve | Honeywell VR8305 3/4" | Pilot Valve | Honeywell VR8205 |
| Firing Valve | Honeywell B200T1025 3/4" | Air Switch | Cleveland RSS-495 |
| Ignition Control | UTC 1003-61A | Blower Motor | 1/5 hp - FLA 3.0 |
| Operating Control | Tekmar BTC-2PA | Relief Valve - DW | 3/4" x 3/4" set @ 125 psi |
| High Limit | Honeywell L4008E | Relief Valve - DB | 3/4" x 3/4" set @ 50 psi |
| | | Flow Switch | TACO IFS-1 |

RECOVERY CAPACITY

| | | | | | | | | | | | |
|------|------|------|------|------|------|-------|------|-------|------|-------|------|
| 40°F | 22°C | 60°F | 33°C | 80°F | 44°C | 100°F | 56°C | 120°F | 67°C | 140°F | 78°C |
| 1018 | 3853 | 679 | 2569 | 509 | 1927 | 407 | 1541 | 339 | 1284 | 291 | 1101 |

ASME

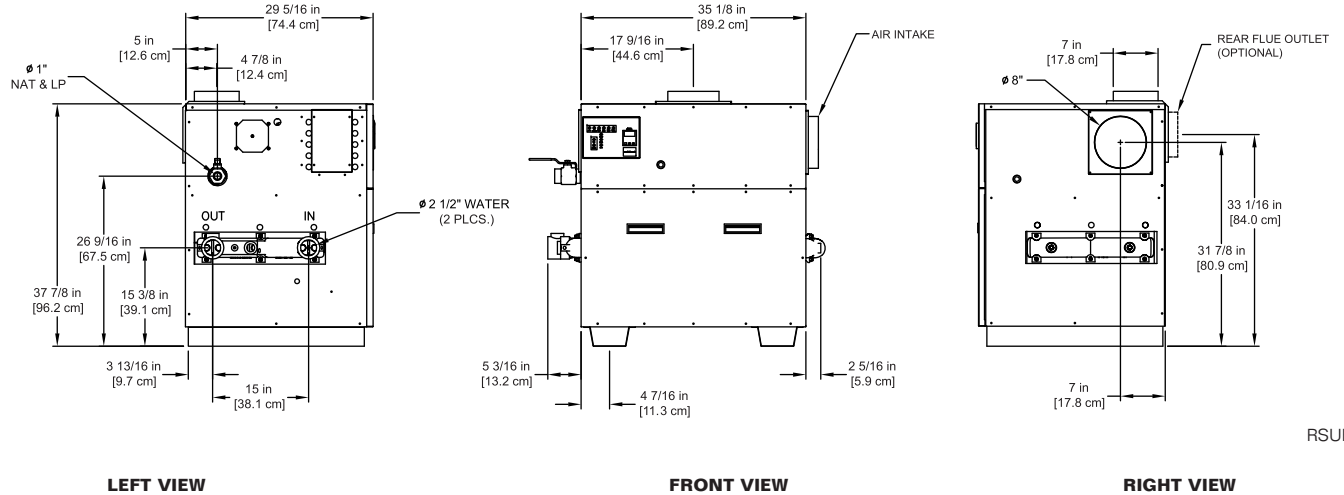
| | | | |
|---------------------------------|----------------------------|--------------------|------------------------|
| ASME Sect IV Htg Surface | 50.0 Sq. Ft. / 4.65 Sq. M. | Design Data | Max. 160 psig & 250 °F |
|---------------------------------|----------------------------|--------------------|------------------------|

| | | |
|---------------------|-------|--|
| REP FIRM | _____ | DOMINATOR 400 Category I or Category III Appliance (See Installation and Operation Manual for venting information) |
| SUBMITTED BY | _____ | |
| JOB NAME | _____ | |
| ARCHITECT | _____ | |
| ENGINEER | _____ | |
| CONTRACTOR | _____ | |
| DATE | _____ | |
| | | RBI ® A Division of Mestek, Inc. Westfield, MA 01085 (413) 568-9571 |

CODE OPTIONS

| | |
|-------------------------------------|---|
| CSD-1 | UTC Lockout/Reset Control Manual Reset LWCO |
| Kentucky (Water Htr Only) | 200°F Maximum Operating Control and High Limit |

NOTE: Dimensions are approximate and should not be used to "rough-in" equipment.
 * Add circulator amps.
 **For incoming gas pressures lower than 7" WC natural or 11" WC propane, consult factory.



RSUB-29-B

AGA CERTIFIED RATINGS & CAPACITIES

| | | | |
|--------------------------------|----------------------------|-----------------------------------|--------------------|
| Fuel Type | Natural/Propane Gas | Boiler FLA | 5.08* |
| Input BTU/hr. | 600,000 / 176 kW | Min. Gas Pressure Required | 6" WC** |
| Output BTU/hr. | 510,000 / 149 kW | Max. Gas Pressure Allowed | 14" WC |
| Electrical Requirements | 120VAC/ 1 ph/ 60 hz/ 6 amp | Operating Weight | 469 lbs. / 213 kg. |

TEMPERATURE RISE / PRESSURE DROP

| 15°F / 8.3°C | | 20°F / 11.1°C | | 25°F / 13.9°C | | 30°F / 16.7°C | | | | | | | | | |
|--------------|---------------|---------------|---------------|---------------|---------------|---------------|---------------|------|-----|------|-----|------|-----|------|-----|
| Flow Rate | Pressure Drop | Flow Rate | Pressure Drop | Flow Rate | Pressure Drop | Flow Rate | Pressure Drop | | | | | | | | |
| GPM | L/s | Ft | kPa | GPM | L/s | Ft | kPa | GPM | L/s | Ft | kPa | | | | |
| 68.1 | 4.3 | 1.30 | 3.8 | 51.1 | 3.2 | 0.76 | 2.3 | 40.8 | 2.6 | 0.51 | 1.5 | 34.0 | 2.1 | 0.36 | 1.1 |

BOILER TRIM & CONTROLS

| | | | |
|--------------------------|------------------------|--------------------------|---------------------------|
| Main Gas Valve | Honeywell V8944 1" | Pilot Valve | Honeywell VR8205 |
| Firing Valve | Honeywell B200T1033 1" | Air Switch | Cleveland RSS-495 |
| Safety Valve | Honeywell V48A 1" | Blower Motor | 1/5 hp - FLA 3.0 |
| Ignition Control | UTC 1003-61A | Relief Valve - DW | 3/4" x 3/4" set @ 125 psi |
| Operating Control | Tekmar BTC-2PA | Relief Valve - DB | 3/4" x 3/4" set @ 50 psi |
| High Limit | Honeywell L4008E | Flow Switch | TACO IFS-1 |

RECOVERY CAPACITY

| | | | | | | | | | | | |
|------|------|------|------|------|------|-------|------|-------|------|-------|------|
| 40°F | 22°C | 60°F | 33°C | 80°F | 44°C | 100°F | 56°C | 120°F | 67°C | 140°F | 78°C |
| 1531 | 5794 | 1020 | 3863 | 765 | 2897 | 612 | 2318 | 510 | 1931 | 437 | 1655 |

ASME

| | | | |
|---------------------------------|----------------------------|--------------------|-----------------------|
| ASME Sect IV Htg Surface | 64.0 Sq. Ft. / 5.95 Sq. M. | Design Data | Max. 160 psig & 250°F |
|---------------------------------|----------------------------|--------------------|-----------------------|

| | | |
|---------------------|-------|---|
| REP FIRM | _____ | <h1 style="margin: 0;">DOMINATOR 600</h1> <p style="margin: 0;">Category I or Category III Appliance</p> <p style="margin: 0;">(See Installation and Operation Manual for venting information)</p> |
| SUBMITTED BY | _____ | |
| JOB NAME | _____ | |
| ARCHITECT | _____ | |
| ENGINEER | _____ | |
| CONTRACTOR | _____ | |
| DATE | _____ | |

® A Division of Mestek, Inc.
Westfield, MA 01085
(413) 568-9571

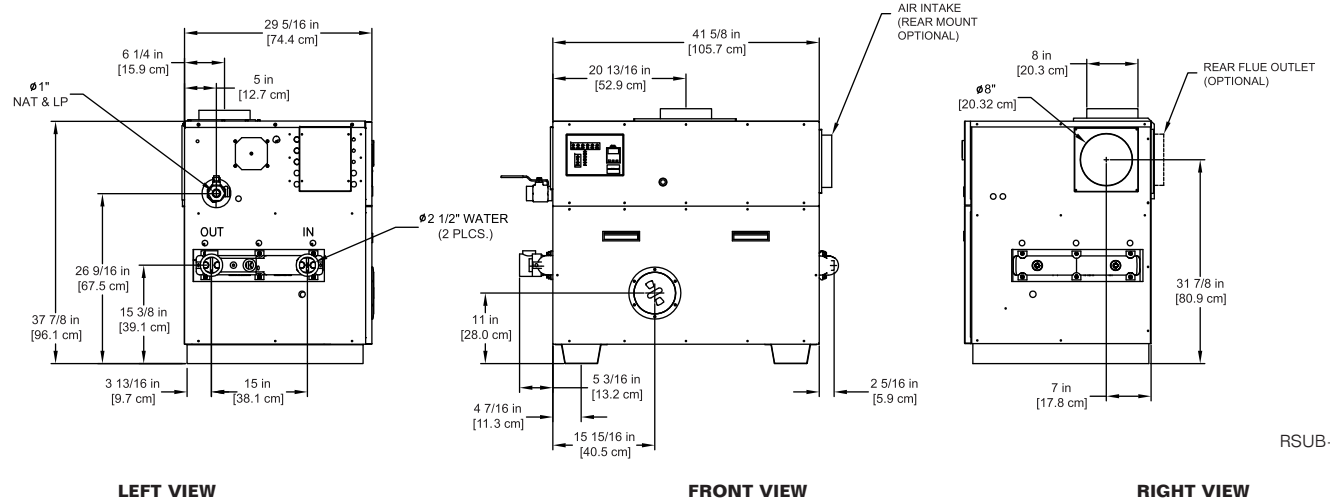
CODE OPTIONS

| | |
|-------------------------------------|---|
| CSD-1 | UTC Lockout/Reset Control Manual Reset LWCO |
| Kentucky (Water Htr Only) | 200°F Maximum Operating Control and High Limit |

NOTE: Dimensions are approximate and should not be used to "rough-in" equipment.

* Add circulator amps.

**For incoming gas pressures lower than 7" WC natural or 11" WC propane, consult factory.



RSUB-30-B

AGA CERTIFIED RATINGS & CAPACITIES

| | | | |
|--------------------------------|----------------------------|-----------------------------------|--------------------|
| Fuel Type | Natural/Propane Gas | Boiler FLA | 7.18* |
| Input BTU/hr. | 750,000 / 220 kW | Min. Gas Pressure Required | 6" WC** |
| Output BTU/hr. | 637,000 / 187 kW | Max. Gas Pressure Allowed | 14" WC |
| Electrical Requirements | 120VAC/ 1 ph/ 60 hz/ 8 amp | Operating Weight | 565 lbs. / 256 kg. |

TEMPERATURE RISE / PRESSURE DROP

| 20°F / 11.1°C | | 25°F / 13.9°C | | 30°F / 16.7°C | | 35°F / 19.4°C | | | | | | | | | |
|---------------|---------------|---------------|---------------|---------------|---------------|---------------|---------------|------|-----|------|-----|------|-----|------|-----|
| Flow Rate | Pressure Drop | Flow Rate | Pressure Drop | Flow Rate | Pressure Drop | Flow Rate | Pressure Drop | | | | | | | | |
| GPM | L/s | Ft | kPa | GPM | L/s | Ft | kPa | GPM | L/s | Ft | kPa | | | | |
| 63.8 | 4.0 | 1.38 | 4.1 | 51.1 | 3.2 | 0.91 | 2.7 | 42.6 | 2.7 | 0.65 | 1.9 | 36.5 | 2.3 | 0.49 | 1.4 |

BOILER TRIM & CONTROLS

| | | | |
|--------------------------|------------------------|--------------------------|---------------------------|
| Main Gas Valve | Honeywell V8944 1" | Pilot Valve | Honeywell VR8205 |
| Firing Valve | Honeywell B200T1033 1" | Air Switch | Cleveland RSS-495 |
| Safety Valve | Honeywell V48A 1" | Blower Motor | 1/4 hp - FLA 5.1 |
| Ignition Control | UTC 1003-61A | Relief Valve - DW | 3/4" x 3/4" set @ 125 psi |
| Operating Control | Tekmar BTC-2PA | Relief Valve - DB | 3/4" x 3/4" set @ 50 psi |
| High Limit | Honeywell L4008E | Flow Switch | TACO IFS-1 |

RECOVERY CAPACITY

| | | | | | | | | | | | |
|------|------|------|------|------|------|-------|------|-------|------|-------|------|
| 40°F | 22°C | 60°F | 33°C | 80°F | 44°C | 100°F | 56°C | 120°F | 67°C | 140°F | 78°C |
| 1913 | 7243 | 1276 | 4828 | 957 | 3621 | 765 | 2897 | 638 | 2414 | 547 | 2069 |

ASME

| | | | |
|---------------------------------|----------------------------|--------------------|-----------------------|
| ASME Sect IV Htg Surface | 77.0 Sq. Ft. / 7.15 Sq. M. | Design Data | Max. 160 psig & 250°F |
|---------------------------------|----------------------------|--------------------|-----------------------|

REP FIRM _____
SUBMITTED BY _____
JOB NAME _____
ARCHITECT _____
ENGINEER _____
CONTRACTOR _____
DATE _____

DOMINATOR 750

Category I or Category III Appliance
(See Installation and Operation Manual for venting information)

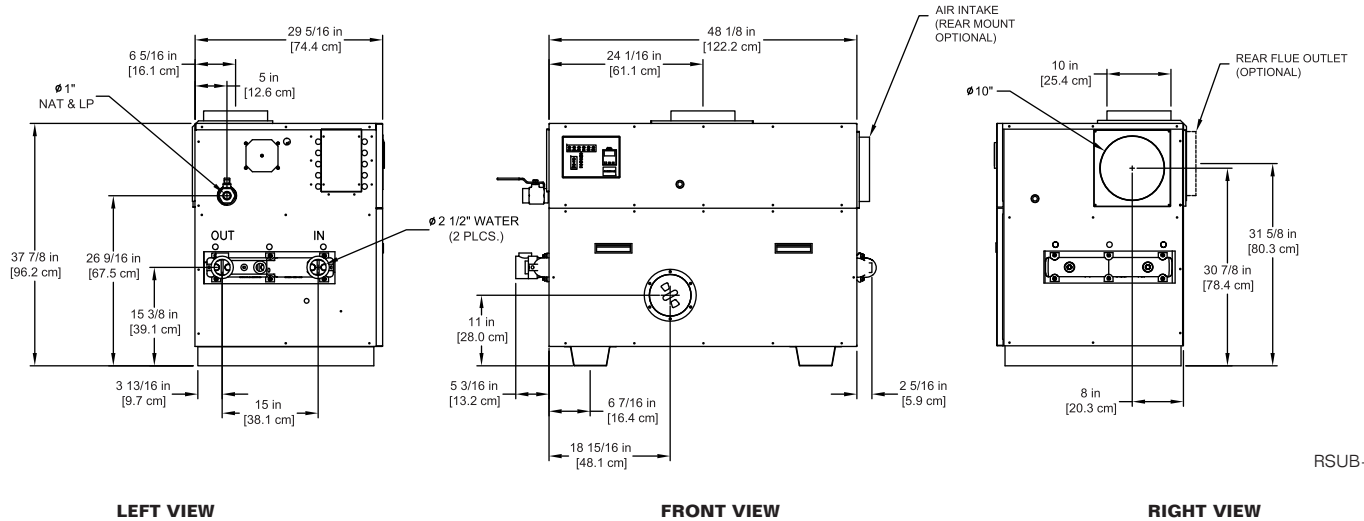


® A Division of Mestek, Inc.
Westfield, MA 01085
(413) 568-9571

CODE OPTIONS

| | |
|-------------------------------------|---|
| CSD-1 | UTC Lockout/Reset Control Manual Reset LWCO |
| Kentucky (Water Htr Only) | 200°F Maximum Operating Control and High Limit |

NOTE: Dimensions are approximate and should not be used to "rough-in" equipment.
 * Add circulator amps.
 **For incoming gas pressures lower than 7" WC natural or 11" WC propane, consult factory.



RSUB-31-B

AGA CERTIFIED RATINGS & CAPACITIES

| | | | |
|--------------------------------|----------------------------|-----------------------------------|--------------------|
| Fuel Type | Natural/Propane Gas | Boiler FLA | 7.18* |
| Input BTU/hr. | 900,000 / 264 kW | Min. Gas Pressure Required | 6" WC** |
| Output BTU/hr. | 765,000 / 225 kW | Max. Gas Pressure Allowed | 14" WC |
| Electrical Requirements | 120VAC/ 1 ph/ 60 hz/ 8 amp | Operating Weight | 644 lbs. / 292 kg. |

TEMPERATURE RISE / PRESSURE DROP

| 20°F / 11.1°C | | 25°F / 13.9°C | | 30°F / 16.7°C | | 35°F / 19.4°C | | | | | | | | | |
|---------------|---------------|---------------|---------------|---------------|---------------|---------------|---------------|------|-----|------|-----|------|-----|------|-----|
| Flow Rate | Pressure Drop | Flow Rate | Pressure Drop | Flow Rate | Pressure Drop | Flow Rate | Pressure Drop | | | | | | | | |
| GPM | L/s | Ft | kPa | GPM | L/s | Ft | kPa | GPM | L/s | Ft | kPa | | | | |
| 76.6 | 4.8 | 2.25 | 6.6 | 61.3 | 3.9 | 1.49 | 4.4 | 51.1 | 3.2 | 1.06 | 3.1 | 43.8 | 2.8 | 0.80 | 2.4 |

BOILER TRIM & CONTROLS

| | | | |
|--------------------------|------------------------|--------------------------|---------------------------|
| Main Gas Valve | Honeywell V8944 1" | Pilot Valve | Honeywell VR8205 |
| Firing Valve | Honeywell B200T1033 1" | Air Switch | Cleveland RSS-495 |
| Safety Valve | Honeywell V48A 1" | Blower Motor | 1/4 hp - FLA 5.1 |
| Ignition Control | UTC 1003-61A | Relief Valve - DW | 3/4" x 3/4" set @ 125 psi |
| Operating Control | Tekmar BTC-2PA | Relief Valve - DB | 3/4" x 3/4" set @ 50 psi |
| High Limit | Honeywell L4008E | Flow Switch | TACO IFS-1 |

RECOVERY CAPACITY

| | | | | | | | | | | | |
|------|------|------|------|------|------|-------|------|-------|------|-------|------|
| 40°F | 22°C | 60°F | 33°C | 80°F | 44°C | 100°F | 56°C | 120°F | 67°C | 140°F | 78°C |
| 2296 | 8691 | 1531 | 5794 | 1148 | 4346 | 918 | 3476 | 765 | 2897 | 656 | 2483 |

ASME

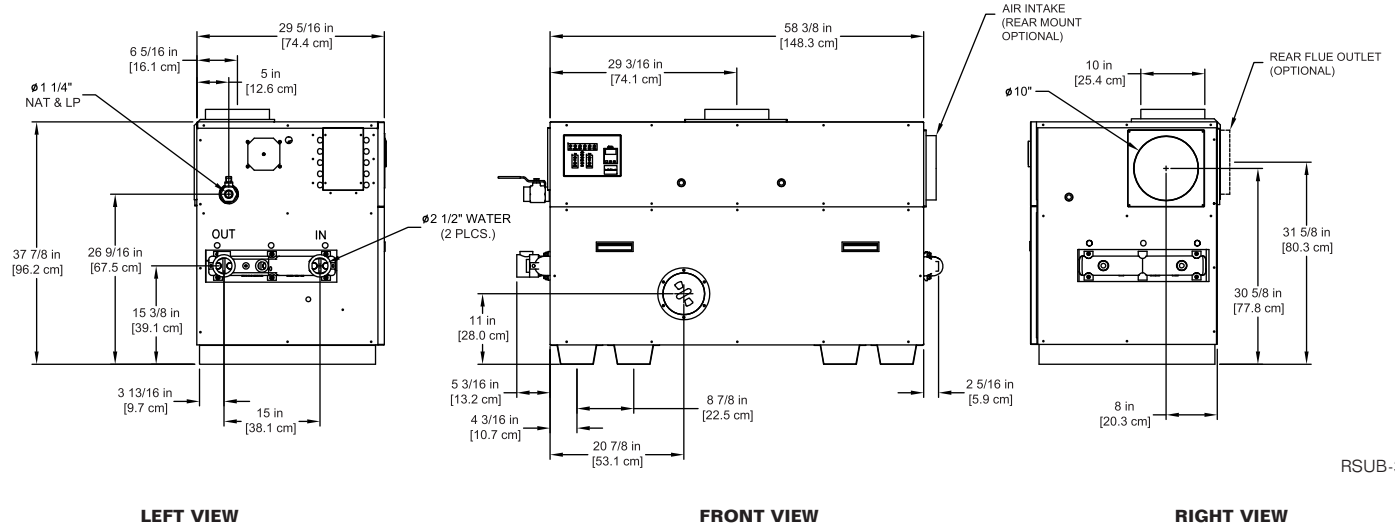
| | | | |
|---------------------------------|----------------------------|--------------------|-----------------------|
| ASME Sect IV Htg Surface | 90.0 Sq. Ft. / 8.36 Sq. M. | Design Data | Max. 160 psig & 250°F |
|---------------------------------|----------------------------|--------------------|-----------------------|

| | | |
|---------------------|-------|--|
| REP FIRM | _____ | <p>DOMINATOR 900</p> <p>Category I or Category III Appliance</p> <p>(See Installation and Operation Manual for venting information)</p> |
| SUBMITTED BY | _____ | |
| JOB NAME | _____ | |
| ARCHITECT | _____ | |
| ENGINEER | _____ | |
| CONTRACTOR | _____ | |
| DATE | _____ |  <p>® A Division of Mestek, Inc. Westfield, MA 01085 (413) 568-9571</p> |

CODE OPTIONS

| | |
|-------------------------------------|---|
| CSD-1 | UTC Lockout/Reset Control Manual Reset LWCO |
| Kentucky (Water Htr Only) | 200°F Maximum Operating Control and High Limit |

NOTE: Dimensions are approximate and should not be used to "rough-in" equipment.
 * Add circulator amps.
 **For incoming gas pressures lower than 7" WC natural or 11" WC propane, consult factory.



RSUB-32-B

AGA CERTIFIED RATINGS & CAPACITIES

| | | | |
|--------------------------------|-----------------------------|-----------------------------------|--------------------|
| Fuel Type | Natural/Propane Gas | Boiler FLA | 13.33* |
| Input BTU/hr. | 1,050,000 / 308 kW | Min. Gas Pressure Required | 6" WC** |
| Output BTU/hr. | 892,500 / 262 kW | Max. Gas Pressure Allowed | 14" WC |
| Electrical Requirements | 120VAC/ 1 ph/ 60 hz/ 14 amp | Operating Weight | 644 lbs. / 292 kg. |

TEMPERATURE RISE / PRESSURE DROP

| 20°F / 11.1°C | | 25°F / 13.9°C | | 30°F / 16.7°C | | 35°F / 19.4°C | | | | | | | | | |
|---------------|---------------|---------------|---------------|---------------|---------------|---------------|---------------|------|-----|------|-----|------|-----|------|-----|
| Flow Rate | Pressure Drop | Flow Rate | Pressure Drop | Flow Rate | Pressure Drop | Flow Rate | Pressure Drop | | | | | | | | |
| GPM | L/s | Ft | kPa | GPM | L/s | Ft | kPa | GPM | L/s | Ft | kPa | | | | |
| 89.4 | 5.6 | 3.66 | 10.8 | 71.5 | 4.5 | 2.42 | 7.1 | 59.6 | 3.8 | 1.73 | 5.1 | 51.1 | 3.2 | 1.30 | 3.8 |

BOILER TRIM & CONTROLS

| | | | |
|--------------------------|----------------------------|--------------------------|---------------------------|
| Main Gas Valve | Honeywell (2) V8944 1" | Pilot Valve | Honeywell VR8205 |
| Firing Valve | Honeywell (2) B200T1033 1" | Air Switch | Cleveland RSS-495 |
| Safety Valve | Honeywell V48A 1-1/4" | Blower Motor | (2) 1/4 hp - FLA 10.2 |
| Ignition Control | UTC 1003-61A | Relief Valve - DW | 3/4" x 3/4" set @ 125 psi |
| Operating Control | Tekmar BTC-2PA | Relief Valve - DB | 3/4" x 3/4" set @ 50 psi |
| Operating Control | Tekmar BTC-4PA | Flow Switch | TACO IFS-1 |
| High Limit | Honeywell L4008E | | |

RECOVERY CAPACITY

| 40°F | 22°C | 60°F | 33°C | 80°F | 44°C | 100°F | 56°C | 120°F | 67°C | 140°F | 78°C |
|------|-------|------|------|------|------|-------|------|-------|------|-------|------|
| 2679 | 10140 | 1786 | 6760 | 1339 | 5070 | 1071 | 4056 | 893 | 3380 | 765 | 2897 |

ASME

| | | | |
|---------------------------------|------------------------------|--------------------|-----------------------|
| ASME Sect IV Htg Surface | 110.0 Sq. Ft. / 10.22 Sq. M. | Design Data | Max. 160 psig & 250°F |
|---------------------------------|------------------------------|--------------------|-----------------------|

| | | |
|---------------------|-------|---|
| REP FIRM | _____ | DOMINATOR 1050 Category I or Category III Appliance (See Installation and Operation Manual for venting information) |
| SUBMITTED BY | _____ | |
| JOB NAME | _____ | |
| ARCHITECT | _____ | |
| ENGINEER | _____ | |
| CONTRACTOR | _____ | |
| DATE | _____ | |

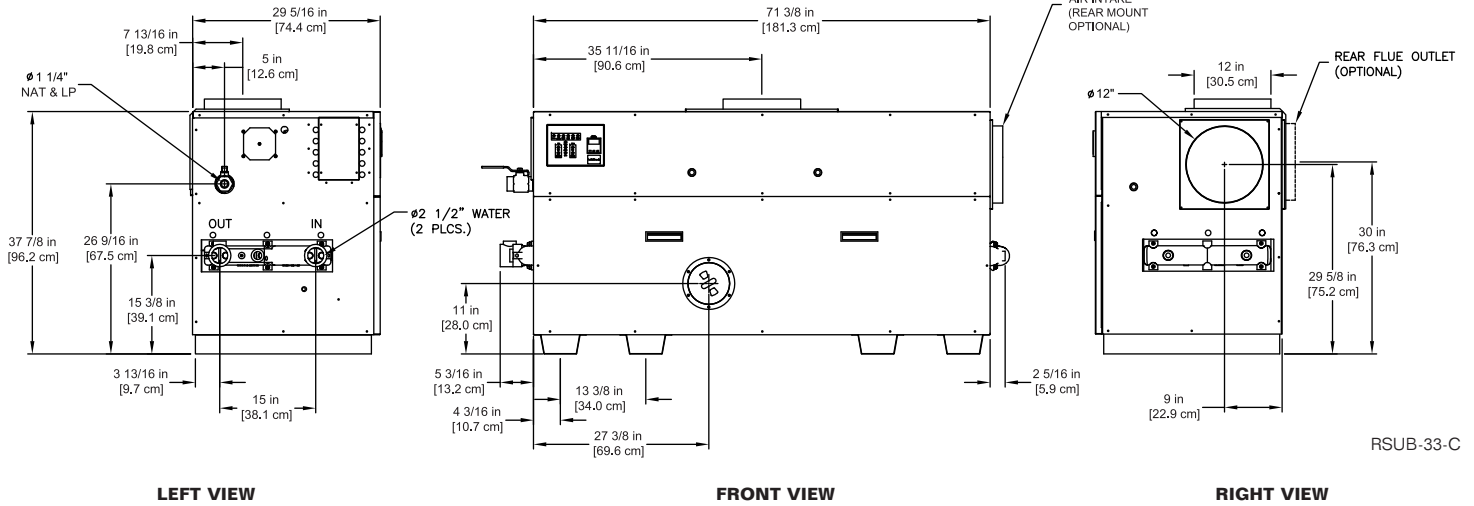
RBI® A Division of Mestek, Inc.
Westfield, MA 01085
(413) 568-9571

SDOM-1050-4

CODE OPTIONS

| | |
|-------------------------------------|---|
| CSD-1 | UTC Lockout/Reset Control Manual Reset LWCO |
| Kentucky (Water Htr Only) | 200°F Maximum Operating Control and High Limit |

NOTE: Dimensions are approximate and should not be used to "rough-in" equipment.
 * Add circulator amps.
 **For incoming gas pressures lower than 7" WC natural or 11" WC propane, consult factory.



RSUB-33-C

AGA CERTIFIED RATINGS & CAPACITIES

| | | | |
|--------------------------------|-----------------------------|-----------------------------------|--------------------|
| Fuel Type | Natural/Propane Gas | Boiler FLA | 13.33* |
| Input BTU/hr. | 1,350,000 / 396 kW | Min. Gas Pressure Required | 6" WC** |
| Output BTU/hr. | 1,147,500 / 336 kW | Max. Gas Pressure Allowed | 14" WC |
| Electrical Requirements | 120VAC/ 1 ph/ 60 hz/ 14 amp | Operating Weight | 895 lbs. / 406 kg. |

TEMPERATURE RISE / PRESSURE DROP

| 20°F / 11.1°C | | 25°F / 13.9°C | | 30°F / 16.7°C | | 35°F / 19.4°C | | | | | | | | | |
|---------------|---------------|---------------|---------------|---------------|---------------|---------------|---------------|------|-----|------|------|------|-----|------|-----|
| Flow Rate | Pressure Drop | Flow Rate | Pressure Drop | Flow Rate | Pressure Drop | Flow Rate | Pressure Drop | | | | | | | | |
| GPM | L/s | Ft | kPa | GPM | L/s | Ft | kPa | GPM | L/s | Ft | kPa | | | | |
| 114.9* | 7.2 | 7.17 | 21.1 | 91.9 | 5.8 | 4.74 | 14.0 | 76.6 | 4.8 | 3.38 | 10.0 | 65.6 | 4.1 | 2.54 | 7.5 |

*Flow exceeds recommended maximum use a greater temperature rise or consult manufacturer. Cupro-Nickel heat exchanger should be considered.

BOILER TRIM & CONTROLS

| | | | |
|--------------------------|----------------------------|--------------------------|---------------------------|
| Main Gas Valve | Honeywell (2) V8944 1" | Pilot Valve | Honeywell VR8205 |
| Firing Valve | Honeywell (2) B200T1033 1" | Air Switch | Cleveland RSS-495 |
| Safety Valve | Honeywell V48A 1-1/4" | Blower Motor | (2) 1/4 hp - FLA 10.2 |
| Ignition Control | UTC 1003-61A | Relief Valve - DW | 3/4" x 3/4" set @ 125 psi |
| Operating Control | Tekmar BTC-2PA | Relief Valve - DB | 3/4" x 1" set @ 50 psi |
| Operating Control | Tekmar BTC-4PA | Flow Switch | TACO IFS-1 |
| High Limit | Honeywell L4008E | | |

RECOVERY CAPACITY

| | | | | | | | | | | | |
|------|-------|------|------|------|------|-------|------|-------|------|-------|------|
| 40°F | 22°C | 60°F | 33°C | 80°F | 44°C | 100°F | 56°C | 120°F | 67°C | 140°F | 78°C |
| 3444 | 13037 | 2296 | 8691 | 1722 | 6518 | 1378 | 5215 | 1148 | 4346 | 984 | 3725 |

ASME

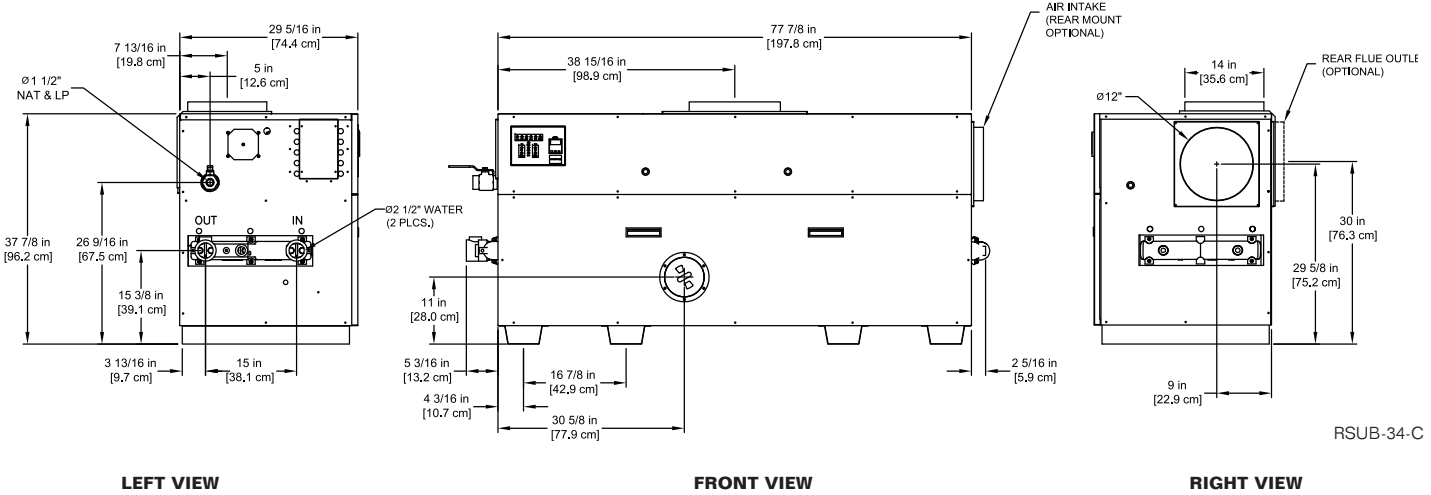
| | | | |
|---------------------------------|------------------------------|--------------------|-----------------------|
| ASME Sect IV Htg Surface | 136.0 Sq. Ft. / 12.63 Sq. M. | Design Data | Max. 160 psig & 250°F |
|---------------------------------|------------------------------|--------------------|-----------------------|

| | | |
|---------------------|-------|--|
| REP FIRM | _____ | <h1 style="margin: 0;">DOMINATOR 1350</h1> <p style="margin: 0;">Category I or Category III Appliance</p> <p style="margin: 0;">(See Installation and Operation Manual for venting information)</p> <p style="margin: 0;">® A Division of Mestek, Inc. Westfield, MA 01085 (413) 568-9571</p> |
| SUBMITTED BY | _____ | |
| JOB NAME | _____ | |
| ARCHITECT | _____ | |
| ENGINEER | _____ | |
| CONTRACTOR | _____ | |
| DATE | _____ | |

CODE OPTIONS

| | |
|-------------------------------------|---|
| CSD-1 | UTC Lockout/Reset Control Manual Reset LWCO |
| Kentucky (Water Htr Only) | 200°F Maximum Operating Control and High Limit |

NOTE: Dimensions are approximate and should not be used to "rough-in" equipment.
 * Add circulator amps.
 **For incoming gas pressures lower than 7" WC natural or 11" WC propane, consult factory.



RSUB-34-C

AGA CERTIFIED RATINGS & CAPACITIES

| | | | |
|--------------------------------|-----------------------------|-----------------------------------|--------------------|
| Fuel Type | Natural/Propane Gas | Boiler FLA | 13.33* |
| Input BTU/hr. | 1,500,000 / 440 kW | Min. Gas Pressure Required | 6" WC** |
| Output BTU/hr. | 1,275,000 / 374 kW | Max. Gas Pressure Allowed | 14" WC |
| Electrical Requirements | 120VAC/ 1 ph/ 60 hz/ 14 amp | Operating Weight | 915 lbs. / 415 kg. |

TEMPERATURE RISE / PRESSURE DROP

| 25°F / 13.9°C | | 30°F / 16.7°C | | | | 35°F / 19.4°C | | | | | |
|---------------|-----|---------------|------|-----------|-----|---------------|------|-----------|-----|---------------|------|
| Flow Rate | | Pressure Drop | | Flow Rate | | Pressure Drop | | Flow Rate | | Pressure Drop | |
| GPM | L/s | Ft | kPa | GPM | L/s | Ft | kPa | GPM | L/s | Ft | kPa |
| 102.1 | 6.4 | 6.31 | 18.6 | 85.1 | 5.4 | 4.50 | 13.3 | 72.9 | 4.6 | 3.38 | 10.0 |

BOILER TRIM & CONTROLS

| | | | |
|--------------------------|----------------------------|--------------------------|---------------------------|
| Main Gas Valve | Honeywell (2) V8944 1" | Pilot Valve | Honeywell VR8205 |
| Firing Valve | Honeywell (2) B200T1033 1" | Air Switch | Cleveland RSS-495 |
| Safety Valve | Honeywell V48A 1-1/4" | Blower Motor | (2) 1/4 hp - FLA 10.2 |
| Ignition Control | UTC 1003-61A | Relief Valve - DW | 3/4" x 3/4" set @ 125 psi |
| Operating Control | Tekmar BTC-2PA | Relief Valve - DB | 3/4" x 1" set @ 50 psi |
| Operating Control | Tekmar BTC-4PA | Flow Switch | TACO IFS-1 |
| High Limit | Honeywell L4008E | | |

RECOVERY CAPACITY

| | | | | | | | | | | | |
|------|-------|------|------|------|------|-------|------|-------|------|-------|------|
| 40°F | 22°C | 60°F | 33°C | 80°F | 44°C | 100°F | 56°C | 120°F | 67°C | 140°F | 78°C |
| 3827 | 14485 | 2551 | 9657 | 1913 | 7243 | 1531 | 5794 | 1276 | 4828 | 1093 | 4139 |

ASME

| | | | |
|---------------------------------|------------------------------|--------------------|-----------------------|
| ASME Sect IV Htg Surface | 149.0 Sq. Ft. / 13.84 Sq. M. | Design Data | Max. 160 psig & 250°F |
|---------------------------------|------------------------------|--------------------|-----------------------|

| | | |
|---------------------|-------|--|
| REP FIRM | _____ | DOMINATOR 1500 Category I or Category III Appliance (See Installation and Operation Manual for venting information) |
| SUBMITTED BY | _____ | |
| JOB NAME | _____ | |
| ARCHITECT | _____ | |
| ENGINEER | _____ | |
| CONTRACTOR | _____ | |
| DATE | _____ | |

RBI® A Division of Mestek, Inc.
Westfield, MA 01085
(413) 568-9571

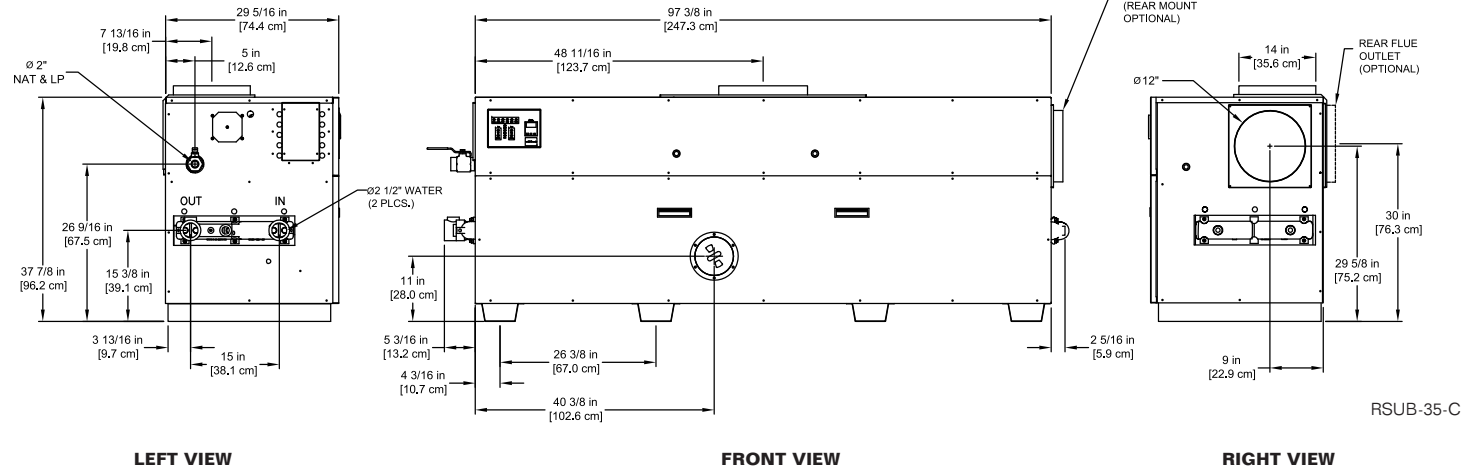
CODE OPTIONS

| | |
|-------------------------------------|---|
| CSD-1 | UTC Lockout/Reset Control Manual Reset LWCO |
| Kentucky (Water Htr Only) | 200°F Maximum Operating Control and High Limit |

NOTE: Dimensions are approximate and should not be used to "rough-in" equipment.

* Add circulator amps.

**For incoming gas pressures lower than 7" WC natural or 11" WC propane, consult factory.



RSUB-35-C

AGA CERTIFIED RATINGS & CAPACITIES

| | | | |
|--------------------------------|-----------------------------|-----------------------------------|--------------------|
| Fuel Type | Natural/Propane Gas | Boiler FLA | 13.33* |
| Input BTU/hr. | 1,950,000 / 572 kW | Min. Gas Pressure Required | 6" WC** |
| Output BTU/hr. | 1,657,500 / 486 kW | Max. Gas Pressure Allowed | 14" WC |
| Electrical Requirements | 120VAC/ 1 ph/ 60 hz/ 14 amp | Operating Weight | 915 lbs. / 415 kg. |

TEMPERATURE RISE / PRESSURE DROP

| 30°F / 16.7°C | | | | 35°F / 19.4°C | | | |
|---------------|-----|---------------|------|---------------|-----|---------------|------|
| Flow Rate | | Pressure Drop | | Flow Rate | | Pressure Drop | |
| GPM | L/s | Ft | kPa | GPM | L/s | Ft | kPa |
| 110.6* | 7.0 | 9.20 | 27.1 | 94.8 | 6.0 | 6.91 | 20.4 |

*Flow exceeds recommended maximum use a greater temperature rise or consult manufacturer. Cupro-Nickel heat exchanger should be considered.

BOILER TRIM & CONTROLS

| | | | |
|--------------------------|----------------------------|--------------------------|----------------------------|
| Main Gas Valve | Honeywell (2) V8944 1" | Pilot Valve | Honeywell VR8205 |
| Firing Valve | Honeywell (2) B200T1033 1" | Air Switch | Cleveland RSS-495 |
| Safety Valve | Honeywell V48A 1-1/2" | Blower Motor | (2) 1/4 hp - FLA 10.2 |
| Ignition Control | UTC 1003-61A | Relief Valve - DW | 3/4" x 3/4" set @ 125 psi |
| Operating Control | Tekmar BTC-2PA | Relief Valve - DB | 3/4" x 1-1/4" set @ 50 psi |
| Operating Control | Tekmar BTC-4PA | Flow Switch | TACO IFS-1 |
| High Limit | Honeywell L4008E | | |

RECOVERY CAPACITY

| 40°F | 22°C | 60°F | 33°C | 80°F | 44°C | 100°F | 56°C | 120°F | 67°C | 140°F | 78°C |
|------|-------|------|-------|------|------|-------|------|-------|------|-------|------|
| 4974 | 18831 | 3316 | 12554 | 2487 | 9415 | 1990 | 7532 | 1658 | 6277 | 1421 | 5380 |

ASME

| | | | |
|---------------------------------|------------------------------|--------------------|-----------------------|
| ASME Sect IV Htg Surface | 189.0 Sq. Ft. / 17.56 Sq. M. | Design Data | Max. 160 psig & 250°F |
|---------------------------------|------------------------------|--------------------|-----------------------|

REP FIRM _____
SUBMITTED BY _____
JOB NAME _____
ARCHITECT _____
ENGINEER _____
CONTRACTOR _____
DATE _____

DOMINATOR 1950

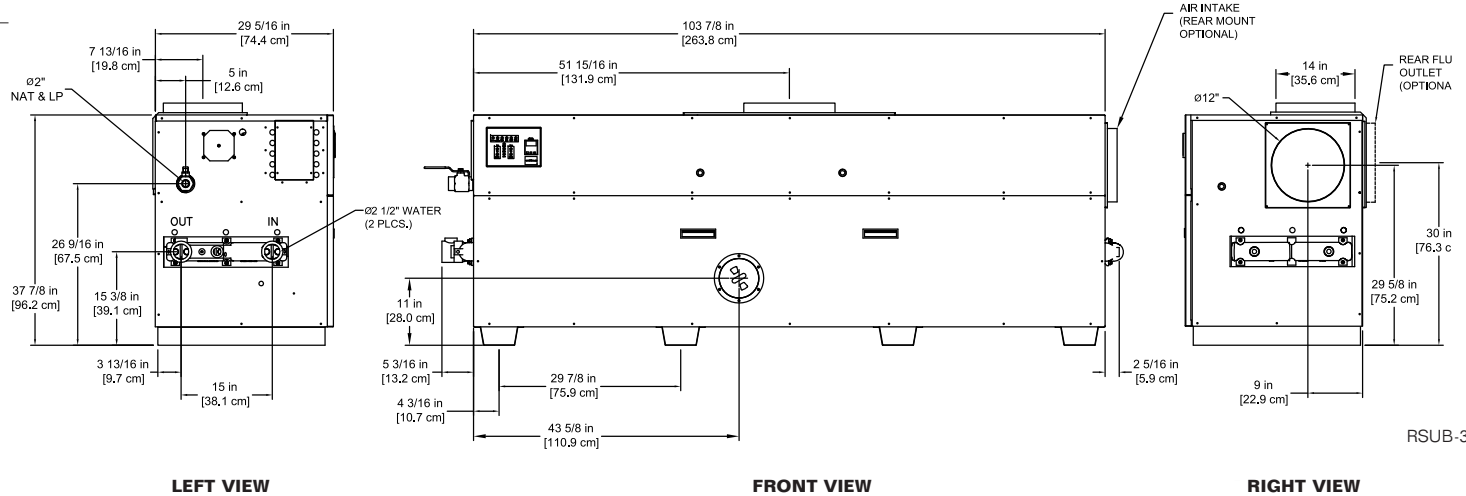
Category I or Category III Appliance
(See Installation and Operation Manual for venting information)

RBI® A Division of Mestek, Inc.
Westfield, MA 01085
(413) 568-9571

CODE OPTIONS

| | |
|-------------------------------------|---|
| CSD-1 | UTC Lockout/Reset Control Manual Reset LWCO |
| Kentucky (Water Htr Only) | 200°F Maximum Operating Control and High Limit |

NOTE: Dimensions are approximate and should not be used to "rough-in" equipment.
 * Add circulator amps.
 **For incoming gas pressures lower than 7" WC natural or 11" WC propane, consult factory.



RSUB-36-C

AGA CERTIFIED RATINGS & CAPACITIES

| | | | |
|--------------------------------|-----------------------------|-----------------------------------|---------------------|
| Fuel Type | Natural/Propane Gas | Boiler FLA | 13.33* |
| Input BTU/hr. | 2,100,000 / 616 kW | Min. Gas Pressure Required | 6" WC** |
| Output BTU/hr. | 1,785,000 / 523 kW | Max. Gas Pressure Allowed | 14" WC |
| Electrical Requirements | 120VAC/ 1 ph/ 60 hz/ 14 amp | Operating Weight | 1192 lbs. / 541 kg. |

TEMPERATURE RISE / PRESSURE DROP

| 30°F / 16.7°C | | | | 35°F / 19.4°C | | | |
|---------------|-----|---------------|------|---------------|-----|---------------|------|
| Flow Rate | | Pressure Drop | | Flow Rate | | Pressure Drop | |
| GPM | L/s | Ft | kPa | GPM | L/s | Ft | kPa |
| 119.1* | 7.5 | 11.27 | 33.2 | 102.1 | 6.4 | 8.47 | 25.0 |

*Flow exceeds recommended maximum use a greater temperature rise or consult manufacturer. Cupro-Nickel heat exchanger should be considered.

BOILER TRIM & CONTROLS

| | | | |
|--------------------------|--------------------------------|--------------------------|----------------------------|
| Main Gas Valve | Honeywell (2) V8944 1-1/4" | Pilot Valve | Honeywell VR8205 |
| Firing Valve | Honeywell (2) B200T1041 1-1/4" | Air Switch | Cleveland RSS-495 |
| Safety Valve | Honeywell V48A 1-1/2" | Blower Motor | (2) 1/4 hp - FLA 10.2 |
| Ignition Control | UTC 1003-61A | Relief Valve - DW | 3/4" x 3/4" set @ 125 psi |
| Operating Control | Tekmar BTC-2PA | Relief Valve - DB | 3/4" x 1-1/4" set @ 50 psi |
| Operating Control | Tekmar BTC-4PA | Flow Switch | TACO IFS-1 |
| High Limit | Honeywell L4008E | | |

RECOVERY CAPACITY

| 40°F | 22°C | 60°F | 33°C | 80°F | 44°C | 100°F | 56°C | 120°F | 67°C | 140°F | 78°C |
|------|-------|------|-------|------|-------|-------|------|-------|------|-------|------|
| 5357 | 20279 | 3571 | 13519 | 2679 | 10140 | 2143 | 8112 | 1786 | 6760 | 1531 | 5794 |

ASME

| | | | |
|---------------------------------|------------------------------|--------------------|-----------------------|
| ASME Sect IV Htg Surface | 202.0 Sq. Ft. / 18.77 Sq. M. | Design Data | Max. 160 psig & 250°F |
|---------------------------------|------------------------------|--------------------|-----------------------|

| | | |
|---------------------|-------|--|
| REP FIRM | _____ | <h1 style="margin: 0;">DOMINATOR 2100</h1> <p style="margin: 0;">Category I or Category III Appliance</p> <p style="margin: 0;">(See Installation and Operation Manual for venting information)</p> |
| SUBMITTED BY | _____ | |
| JOB NAME | _____ | |
| ARCHITECT | _____ | |
| ENGINEER | _____ | |
| CONTRACTOR | _____ | |
| DATE | _____ |  |
| | | <p>® A Division of Mestek, Inc. Westfield, MA 01085 (413) 568-9571</p> |