

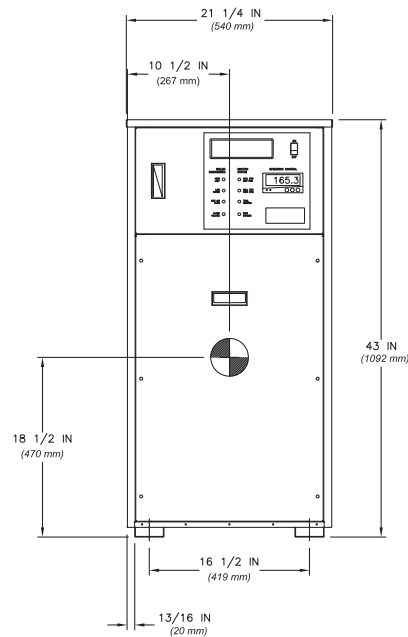
### CODE OPTIONS

<b>CSD-1</b>	Manual Reset LWCO
	200° F Maximum Operating Control and High Limit

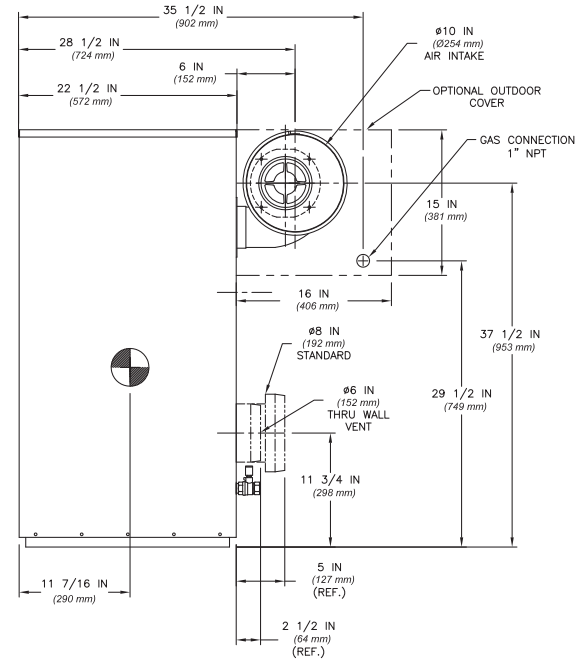
**NOTE:** Dimensions are approximate and should not be used to "rough-in" equipment.

\* Add circulator amps.

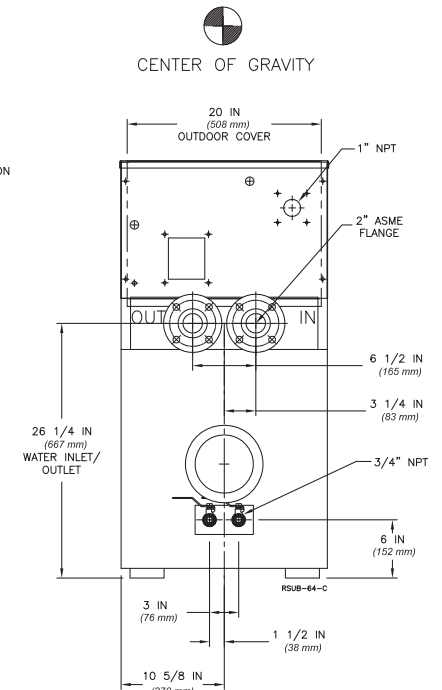
\*\*For incoming gas pressures lower than 5" W.C. natural or 11" W.C. propane, consult factory.



**FRONT VIEW**



**SIDE VIEW**



**REAR VIEW**

### A.G.A. CERTIFIED RATINGS & CAPACITIES

<b>Fuel Type</b>	Natural/Propane Gas	<b>Boiler FLA</b>	5.3*
<b>Input BTU/hr.</b>	500,000 / 147 kW	<b>Min. Gas Pressure Required</b>	5" W.C.**
<b>Output BTU/hr.</b>	425,000 / 125 kW	<b>Max. Gas Pressure Allowed</b>	14" W.C.
<b>Electrical Requirements</b>	120VAC/ 1 ph/ 60 hz/ 6 amp	<b>Operating Weight</b>	424 lbs. / 192 kg.

### BOILER TRIM & CONTROLS

<b>Main Gas Valve</b>	V4944B		
<b>Firing Valve 1" CGA</b>	3.16a		
<b>Safety Valve</b>	ASCO L8214G 1"	<b>Air Switch</b>	HUBA
<b>Ignition Control</b>	Honeywell RM7897C	<b>Blower Motor</b>	Fasco 1/4 hp - FLA 3.6
<b>Operating Control (FB/FW)</b>	Jumo	<b>Relief Valve - FB</b>	3/4" x 3/4" set @ 50 psi
<b>High Limit</b>	Honeywell L4008E	<b>Relief Valve - FW</b>	3/4" x 3/4" set @ 125 psi
<b>Main Ball Valve</b>	1"	<b>Flow Switch</b>	ITT FS251
<b>Solenoid Valve w/ Reg</b>	CV100		

### A.S.M.E.

<b>ASME Sect IV Htg Surface</b>	69.51 Sq. Ft. / 6.46 Sq. M.	<b>Design Data</b>	Max. 160 psig & 250° F
---------------------------------	-----------------------------	--------------------	------------------------

### TEMPERATURE RISE / PRESSURE DROP

20° F / 11.1° C				25° F / 13.9° C			
Flow Rate		Pressure Drop		Flow Rate		Pressure Drop	
GPM	L/s	Ft	kPa	GPM	L/s	Ft	kPa
42.5	2.7	0.53	1.5	34.0	2.1	0.35	1.0

### RECOVERY CAPACITY

40°F	22° C	60°F	33° C	80°F	44° C	100°F	56° C	120°F	67° C	140°F	78° C
1276	4828	850	3219	638	2414	510	1931	425	1609	364	1380

**REP FIRM** \_\_\_\_\_

**SUBMITTED BY** \_\_\_\_\_

**JOB NAME** \_\_\_\_\_

**ARCHITECT** \_\_\_\_\_

**ENGINEER** \_\_\_\_\_

**CONTRACTOR** \_\_\_\_\_

**DATE** \_\_\_\_\_

# FUTERA II 500

**Category I or Category III Appliance**

(see Installation and Operation Manual for venting information)



A Division of Mestek, Inc.  
Westfield, MA 01085  
(413) 568-9571

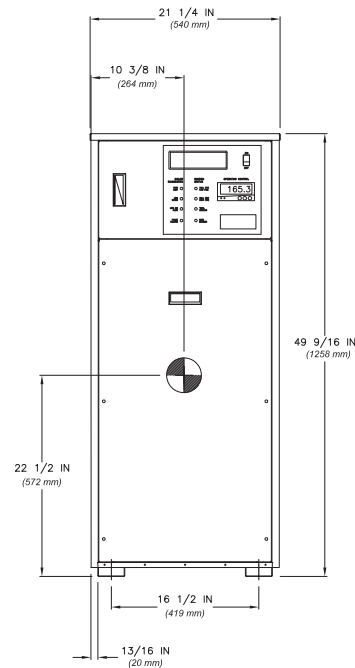
### CODE OPTIONS

<b>CSD-1</b>	Manual Reset LWCO
	200° F Maximum Operating Control and High Limit

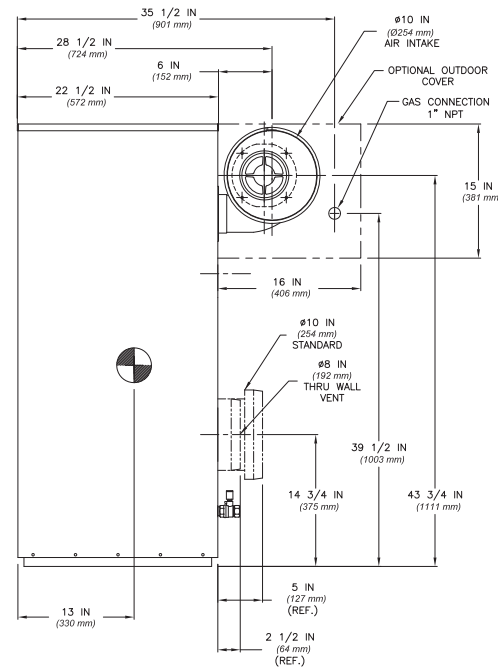
**NOTE:** Dimensions are approximate and should not be used to "rough-in" equipment.

\* Add circulator amps.

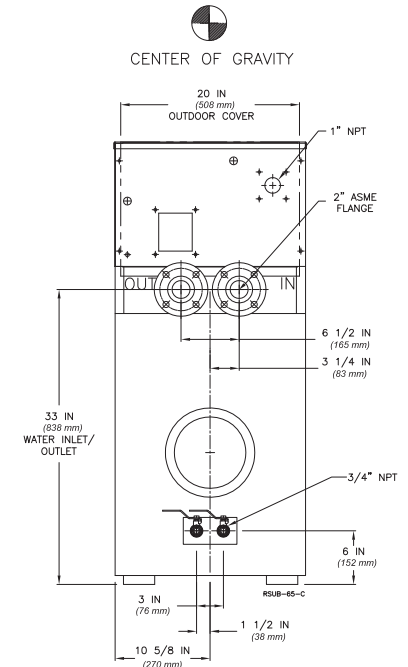
\*\*For incoming gas pressures lower than 5" W.C. natural or 11" W.C. propane, consult factory.



**FRONT VIEW**



**SIDE VIEW**



**REAR VIEW**

### A.G.A. CERTIFIED RATINGS & CAPACITIES

<b>Fuel Type</b>	Natural/Propane Gas	<b>Boiler FLA</b>	5.3*
<b>Input BTU/hr.</b>	750,000 / 220 kW	<b>Min. Gas Pressure Required</b>	5" W.C.**
<b>Output BTU/hr.</b>	637,500 / 187 kW	<b>Max. Gas Pressure Allowed</b>	14" W.C.
<b>Electrical Requirements</b>	120VAC/ 1 ph/ 60 Hz/ 6 amp	<b>Operating Weight</b>	554 lbs. / 252 kg.

### BOILER TRIM & CONTROLS

<b>Main Gas Valve</b>	V4944B		
<b>Firing Valve 1" CGA</b>	3.16a		
<b>Safety Valve</b>	ASCO L8214G 1"	<b>Air Switch</b>	HUBA
<b>Ignition Control</b>	Honeywell RM7897C	<b>Blower Motor</b>	Fasco 1/4 hp - FLA 3.6
<b>Operating Control (FB/FW)</b>	Jumo	<b>Relief Valve - FB</b>	3/4" x 3/4" set @ 50 psi
<b>High Limit</b>	Honeywell L4008E	<b>Relief Valve - FW</b>	3/4" x 3/4" set @ 125 psi
<b>Main Ball Valve</b>	1"	<b>Flow Switch</b>	ITT FS251
<b>Solenoid Valve w/ Reg</b>	CV100		

### A.S.M.E.

<b>ASME Sect IV Htg Surface</b>	97.79 Sq. Ft. / 9.08 Sq. M.	<b>Design Data</b>	Max. 160 psig & 250° F
---------------------------------	-----------------------------	--------------------	------------------------

### TEMPERATURE RISE / PRESSURE DROP

20° F / 11.1° C				25° F / 13.9° C				30° F / 16.7° C				35° F / 19.4° C			
Flow Rate		Pressure Drop		Flow Rate		Pressure Drop		Flow Rate		Pressure Drop		Flow Rate		Pressure Drop	
GPM	L/s	Ft	kPa	GPM	L/s	Ft	kPa	GPM	L/s	Ft	kPa	GPM	L/s	Ft	kPa
63.8	4.0	1.57	4.6	51.0	3.2	1.04	3.1	42.5	2.7	0.70	2.2	36.4	2.3	0.60	1.6

### RECOVERY CAPACITY

40°F	22° C	60°F	33° C	80°F	44° C	100°F	56° C	120°F	67° C	140°F	78° C
1913	7243	1276	4828	957	3621	765	2897	638	2414	547	2069

**REP FIRM** \_\_\_\_\_

**SUBMITTED BY** \_\_\_\_\_

**JOB NAME** \_\_\_\_\_

**ARCHITECT** \_\_\_\_\_

**ENGINEER** \_\_\_\_\_

**CONTRACTOR** \_\_\_\_\_

**DATE** \_\_\_\_\_

# FUTERA II 750

**Category I or Category III Appliance**

(see Installation and Operation Manual for venting information)



A Division of Mestek, Inc.  
Westfield, MA 01085  
(413) 568-9571

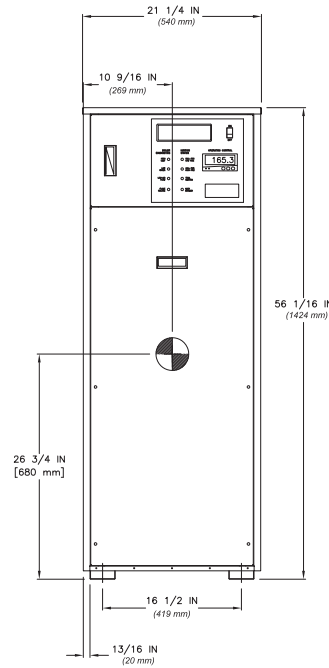
## CODE OPTIONS

<b>CSD-1</b>	Manual Reset LWCO
	200° F Maximum Operating Control and High Limit

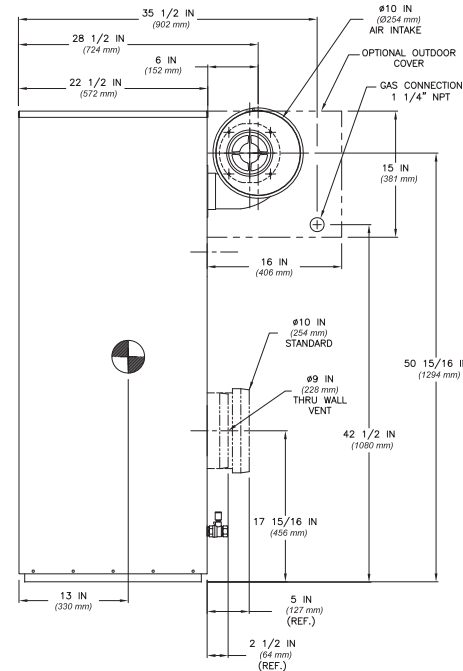
**NOTE:** Dimensions are approximate and should not be used to "rough-in" equipment.

\* Add circulator amps.

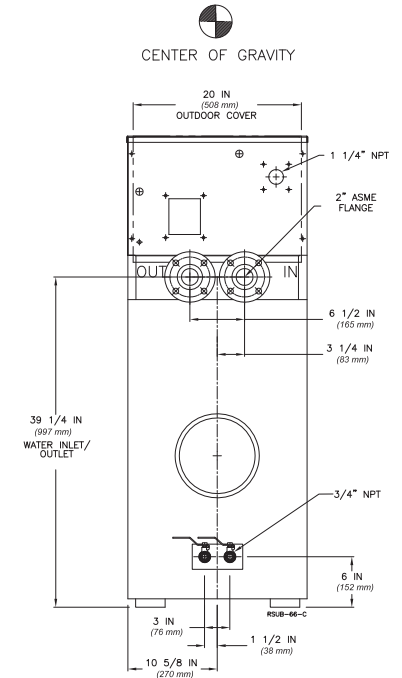
\*\*For incoming gas pressures lower than 5" W.C. natural or 11" W.C. propane, consult factory.



**FRONT VIEW**



**SIDE VIEW**



**REAR VIEW**

## A.G.A. CERTIFIED RATINGS & CAPACITIES

<b>Fuel Type</b>	Natural/Propane Gas	<b>Boiler FLA</b>	5.3*
<b>Input BTU/hr.</b>	1,000,000 / 293 kW	<b>Min. Gas Pressure Required</b>	5" W.C.**
<b>Output BTU/hr.</b>	850,000 / 249 kW	<b>Max. Gas Pressure Allowed</b>	14" W.C.
<b>Electrical Requirements</b>	120VAC / 1 ph / 60 hz / 6 amp	<b>Operating Weight</b>	564 lbs. / 256 kg.

## TEMPERATURE RISE / PRESSURE DROP

20° F / 11.1° C				25° F / 13.9° C				30° F / 16.7° C				35° F / 19.4° C			
Flow Rate		Pressure Drop		Flow Rate		Pressure Drop		Flow Rate		Pressure Drop		Flow Rate		Pressure Drop	
GPM	L/s	Ft	kPa	GPM	L/s	Ft	kPa	GPM	L/s	Ft	kPa	GPM	L/s	Ft	kPa
85.0	5.4	3.44	10.1	68.0	4.3	2.27	6.7	56.7	3.6	1.60	4.8	48.6	3.1	1.20	3.6

## BOILER TRIM & CONTROLS

<b>Main Gas Valve</b>	V4944B		
<b>Firing Valve 1 1/4" CGA</b>	3.16a		
<b>Safety Valve</b>	Honeywell V88A 1 1/4"	<b>Air Switch</b>	HUBA
<b>Ignition Control</b>	ASCO L8214G 1 1/4"	<b>Blower Motor</b>	Fasco 1/4 hp - FLA 3.6
<b>Operating Control (FB/FW)</b>	Jumo	<b>Relief Valve - FB</b>	3/4" x 3/4" set @ 50 psi
<b>High Limit</b>	Honeywell L4008E	<b>Relief Valve - FW</b>	3/4" x 3/4" set @ 125 psi
<b>Main Ball Valve</b>	1 1/4"	<b>Flow Switch</b>	ITT FS251
<b>Solenoid Valve w/ Reg</b>	CV100		

## RECOVERY CAPACITY

40°F	22° C	60°F	33° C	80°F	44° C	100°F	56° C	120°F	67° C	140°F	78° C
2551	9657	1701	6438	1276	4828	1020	3863	850	3219	729	2759

## A.S.M.E.

<b>ASME Sect IV Htg Surface</b>	126.07 Sq. Ft. / 11.71 Sq. M.	<b>Design Data</b>	Max. 160 psig & 250° F
---------------------------------	-------------------------------	--------------------	------------------------

**REP FIRM** \_\_\_\_\_  
**SUBMITTED BY** \_\_\_\_\_  
**JOB NAME** \_\_\_\_\_  
**ARCHITECT** \_\_\_\_\_  
**ENGINEER** \_\_\_\_\_  
**CONTRACTOR** \_\_\_\_\_  
**DATE** \_\_\_\_\_

# FUTERA II 1000

**Category I or Category III Appliance**  
(see Installation and Operation Manual for venting information)



A Division of Mestek, Inc.  
Westfield, MA 01085  
(413) 568-9571

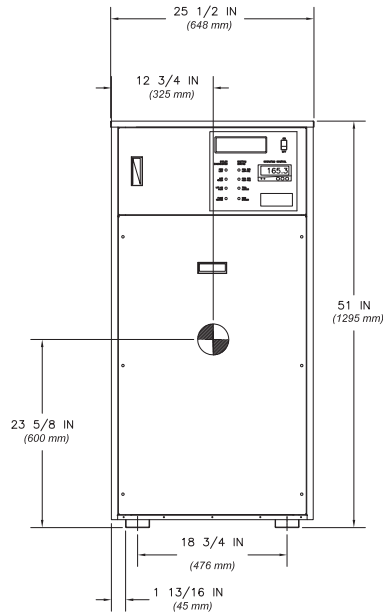
## CODE OPTIONS

<b>CSD-1</b>	Manual Reset LWCO
	200° F Maximum Operating Control and High Limit

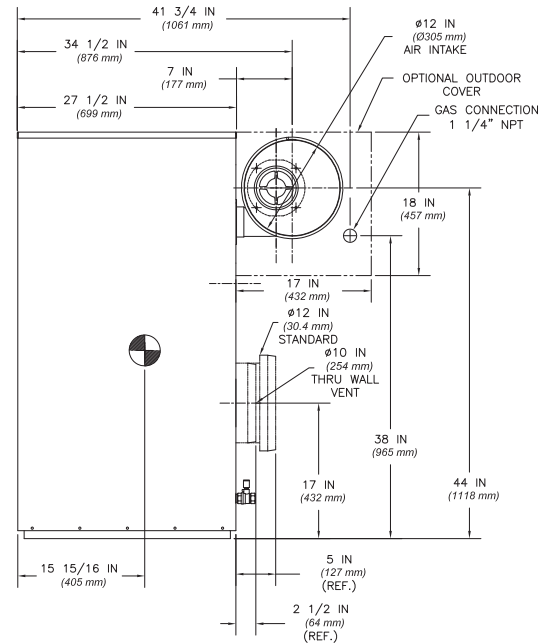
**NOTE:** Dimensions are approximate and should not be used to "rough-in" equipment.

\* Add circulator amps.

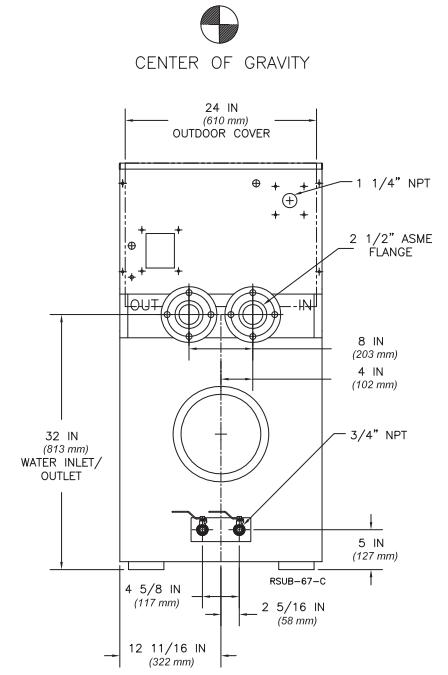
\*\*For incoming gas pressures lower than 5" W.C. natural or 11" W.C. propane, consult factory.



**FRONT VIEW**



**SIDE VIEW**



**REAR VIEW**

## A.G.A. CERTIFIED RATINGS & CAPACITIES

<b>Fuel Type</b>	Natural/Propane Gas	<b>Boiler FLA</b>	9.9*
<b>Input BTU/hr.</b>	1,250,000 / 366 kW	<b>Min. Gas Pressure Required</b>	5" W.C.**
<b>Output BTU/hr.</b>	1,062,500 / 311 kW	<b>Max. Gas Pressure Allowed</b>	14" W.C.
<b>Electrical Requirements</b>	120VAC/ 1 ph/ 60 hz/ 10 amp	<b>Operating Weight</b>	620 lbs. / 281 kg.

## BOILER TRIM & CONTROLS

<b>Main Gas Valve</b>	V4944B		
<b>Firing Valve 1 1/4" CGA</b>	3.16a		
<b>Safety Valve</b>	ASCO L8214G 1 1/4"	<b>Air Switch</b>	HUBA
<b>Ignition Control</b>	Honeywell RM7897C	<b>Blower Motor</b>	Fasco 1/2 hp - FLA 8.2
<b>Operating Control (FB/FW)</b>	Jumo	<b>Relief Valve - FB</b>	3/4" x 1" set @ 50 psi
<b>High Limit</b>	Honeywell L4008E	<b>Relief Valve - FW</b>	3/4" x 3/4" set @ 125 psi
<b>Solenoid Valve w/ Reg</b>	CV100	<b>Flow Switch</b>	ITT FS251
<b>Main Ball Valve</b>	1 1/4"		

## A.S.M.E.

<b>ASME Sect IV Htg Surface</b>	133.76 Sq. Ft. / 12.43 Sq. M.	<b>Design Data</b>	Max. 160 psig & 250° F
---------------------------------	-------------------------------	--------------------	------------------------

## TEMPERATURE RISE / PRESSURE DROP

20° F / 11.1° C				25° F / 13.9° C				30° F / 16.7° C				35° F / 19.4° C			
Flow Rate		Pressure Drop		Flow Rate		Pressure Drop		Flow Rate		Pressure Drop		Flow Rate		Pressure Drop	
GPM	L/s	Ft	kPa	GPM	L/s	Ft	kPa	GPM	L/s	Ft	kPa	GPM	L/s	Ft	kPa
106.3	6.7	2.11	6.2	85.0	5.4	1.40	4.1	70.8	4.5	1.00	2.9	60.7	3.8	0.70	2.2

## RECOVERY CAPACITY

40° F	22° C	60° F	33° C	80° F	44° C	100° F	56° C	120° F	67° C	140° F	78° C
3189	12071	2126	8047	1594	6035	1276	4828	1063	4024	911	3449

**REP FIRM** \_\_\_\_\_  
**SUBMITTED BY** \_\_\_\_\_  
**JOB NAME** \_\_\_\_\_  
**ARCHITECT** \_\_\_\_\_  
**ENGINEER** \_\_\_\_\_  
**CONTRACTOR** \_\_\_\_\_  
**DATE** \_\_\_\_\_

# FUTERA II 1250

**Category I or Category III Appliance**

(see Installation and Operation Manual for venting information)



A Division of Mestek, Inc.  
 Westfield, MA 01085  
 (413) 568-9571

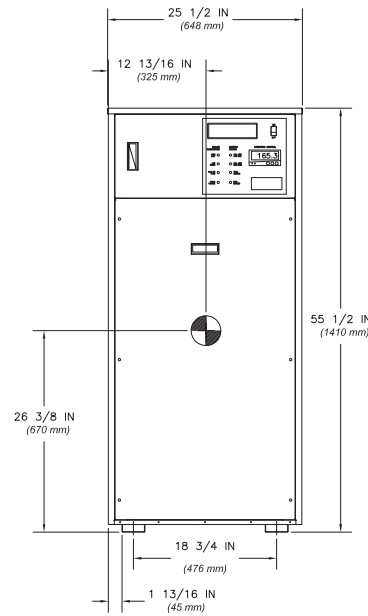
## CODE OPTIONS

<b>CSD-1</b>	Manual Reset LWCO
	200° F Maximum Operating Control and High Limit

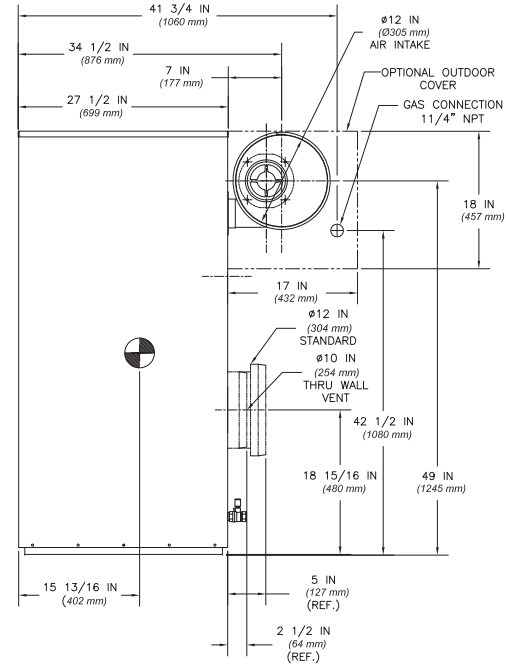
**NOTE:** Dimensions are approximate and should not be used to "rough-in" equipment.

\* Add circulator amps.

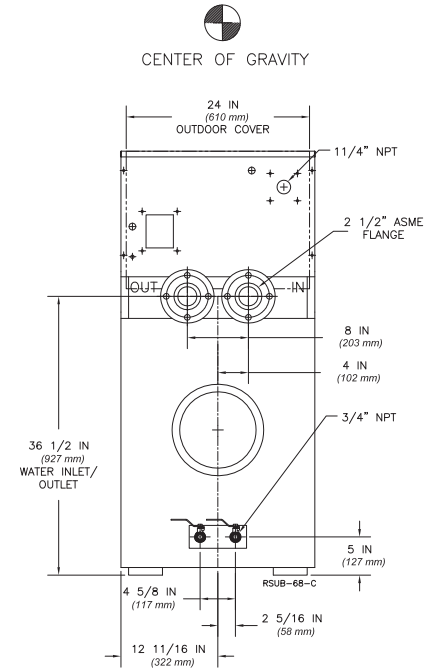
\*\*For incoming gas pressures lower than 5" W.C. natural or 11" W.C. propane, consult factory.



**FRONT VIEW**



**SIDE VIEW**



**REAR VIEW**

## A.G.A. CERTIFIED RATINGS & CAPACITIES

<b>Fuel Type</b>	Natural/Propane Gas	<b>Boiler FLA</b>	9.9*
<b>Input BTU/hr.</b>	1,500,000 / 440 kW	<b>Min. Gas Pressure Required</b>	5" W.C.**
<b>Output BTU/hr.</b>	1,275,000 / 374 kW	<b>Max. Gas Pressure Allowed</b>	14" W.C.
<b>Electrical Requirements</b>	120VAC/ 1 ph/ 60 hz/ 10 amp	<b>Operating Weight</b>	683 lbs. / 310 kg.

## BOILER TRIM & CONTROLS

<b>Main Gas Valve</b>	V4944B		
<b>Firing Valve 1 1/4" CGA</b>	3.16a		
<b>Safety Valve</b>	ASCO L8214G 1 1/4"	<b>Air Switch</b>	HUBA
<b>Ignition Control</b>	Honeywell RM7897C	<b>Blower Motor</b>	Fasco 1/2 hp - FLA 8.2
<b>Operating Control (FB/FW)</b>	Jumo	<b>Relief Valve - FB</b>	1" x 1 1/4" set @ 50 psi
<b>High Limit</b>	Honeywell L4008E	<b>Relief Valve - FW</b>	3/4" x 3/4" set @ 125 psi
<b>Main Ball Valve</b>	1 1/4 "	<b>Flow Switch</b>	ITT FS251
<b>Solenoid Valve w/ Reg</b>	CV100		

## A.S.M.E.

<b>ASME Sect IV Htg Surface</b>	161.16 Sq. Ft. / 14.97 Sq. M.	<b>Design Data</b>	Max. 160 psig & 250° F
---------------------------------	-------------------------------	--------------------	------------------------

## TEMPERATURE RISE / PRESSURE DROP

20° F / 11.1° C				25° F / 13.9° C				30° F / 16.7° C				35° F / 19.4° C			
Flow Rate		Pressure Drop		Flow Rate		Pressure Drop		Flow Rate		Pressure Drop		Flow Rate		Pressure Drop	
GPM	L/s	Ft	kPa	GPM	L/s	Ft	kPa	GPM	L/s	Ft	kPa	GPM	L/s	Ft	kPa
127.5	8.0	3.57	10.5	102.0	6.4	2.36	7.0	85.0	5.4	1.70	5.0	72.9	4.6	1.30	3.7

## RECOVERY CAPACITY

40° F	22° C	60° F	33° C	80° F	44° C	100° F	56° C	120° F	67° C	140° F	78° C
3827	14485	2551	9657	1913	7243	1531	5794	1276	4828	1093	4139

**REP FIRM** \_\_\_\_\_  
**SUBMITTED BY** \_\_\_\_\_  
**JOB NAME** \_\_\_\_\_  
**ARCHITECT** \_\_\_\_\_  
**ENGINEER** \_\_\_\_\_  
**CONTRACTOR** \_\_\_\_\_  
**DATE** \_\_\_\_\_

# FUTERA II 1500

**Category I or Category III Appliance**  
(see Installation and Operation Manual for venting information)



A Division of Mestek, Inc.  
Westfield, MA 01085  
(413) 568-9571

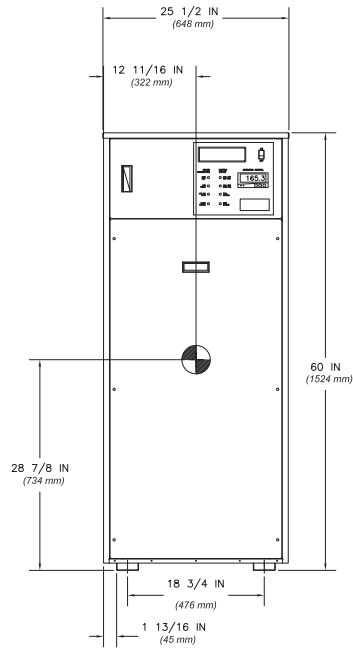
## CODE OPTIONS

<b>CSD-1</b>	Manual Reset LWCO
	200° F Maximum Operating Control and High Limit

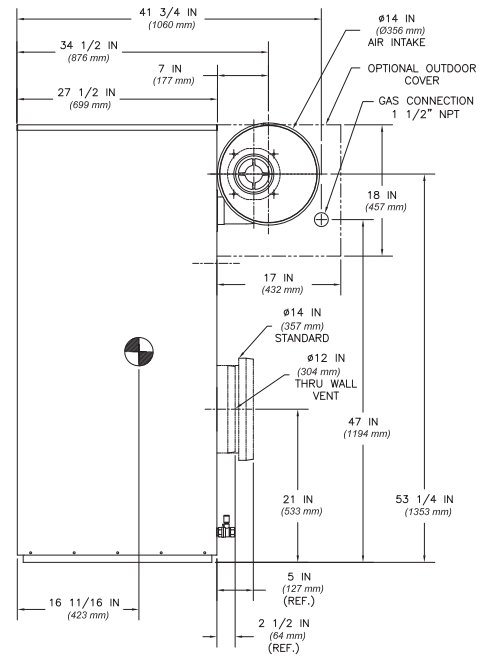
**NOTE:** Dimensions are approximate and should not be used to "rough-in" equipment.

\* Add circulator amps.

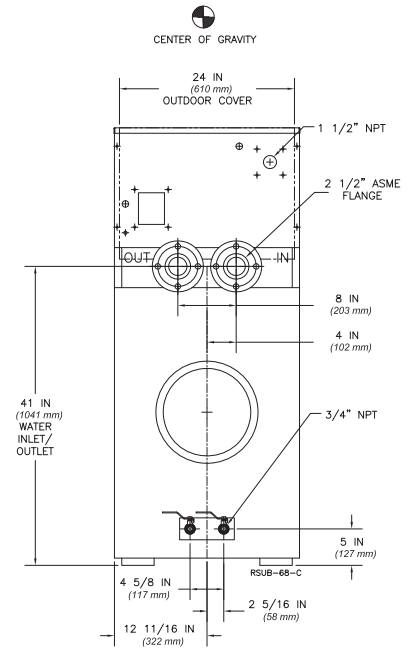
\*\*For incoming gas pressures lower than 5" W.C. natural or 11" W.C. propane, consult factory.



**FRONT VIEW**



**SIDE VIEW**



**REAR VIEW**

## A.G.A. CERTIFIED RATINGS & CAPACITIES

<b>Fuel Type</b>	Natural/Propane Gas	<b>Boiler FLA</b>	11.5*
<b>Input BTU/hr.</b>	1,750,000 / 513 kW	<b>Min. Gas Pressure Required</b>	5" W.C.**
<b>Output BTU/hr.</b>	1,487,500 / 436 kW	<b>Max. Gas Pressure Allowed</b>	14" W.C.
<b>Electrical Requirements</b>	120VAC/ 1 ph/ 60 hz/ 12 amp	<b>Operating Weight</b>	743 lbs. / 337 kg.

## TEMPERATURE RISE / PRESSURE DROP

25° F / 13.9° C				30° F / 16.7° C				35° F / 19.4° C			
Flow Rate		Pressure Drop		Flow Rate		Pressure Drop		Flow Rate		Pressure Drop	
GPM	L/s	Ft	kPa	GPM	L/s	Ft	kPa	GPM	L/s	Ft	kPa
119.0	7.5	3.67	10.8	99.2	6.3	2.60	7.7	85.0	5.4	2.00	5.8

## BOILER TRIM & CONTROLS

<b>Main Gas Valve</b>	V4944B		
<b>Firing Valve 1 1/2" CGA</b>	3.16a		
<b>Safety Valve</b>	ASCO L8214G 1 1/2"	<b>Air Switch</b>	HUBA
<b>Ignition Control</b>	Honeywell RM7897C	<b>Blower Motor</b>	Marathon 3/4 hp - FLA 9.8
<b>Operating Control (FB/FW)</b>	Jumo	<b>Relief Valve - FB</b>	1" x 1 1/4" set @ 50 psi
<b>High Limit</b>	Honeywell L4008E	<b>Relief Valve - FW</b>	3/4" x 3/4" set @ 125 psi
<b>Main Ball Valve</b>	1 1/2"	<b>Flow Switch</b>	ITT FS251
<b>Solenoid Valve w/ Reg</b>	CV100		

## A.S.M.E.

<b>ASME Sect IV Htg Surface</b>	188.57 Sq. Ft. / 17.52 Sq. M.	<b>Design Data</b>	Max. 160 psig & 250° F
---------------------------------	-------------------------------	--------------------	------------------------

## RECOVERY CAPACITY

40° F	22° C	60° F	33° C	80° F	44° C	100° F	56° C	120° F	67° C	140° F	78° C
4464	16899	2976	11266	2232	8450	1786	6760	1488	5633	1276	4828

**REP FIRM** \_\_\_\_\_  
**SUBMITTED BY** \_\_\_\_\_  
**JOB NAME** \_\_\_\_\_  
**ARCHITECT** \_\_\_\_\_  
**ENGINEER** \_\_\_\_\_  
**CONTRACTOR** \_\_\_\_\_  
**DATE** \_\_\_\_\_

# FUTERA II 1750

**Category I or Category III Appliance**

(see Installation and Operation Manual for venting information)



A Division of Mestek, Inc.  
 Westfield, MA 01085  
 (413) 568-9571

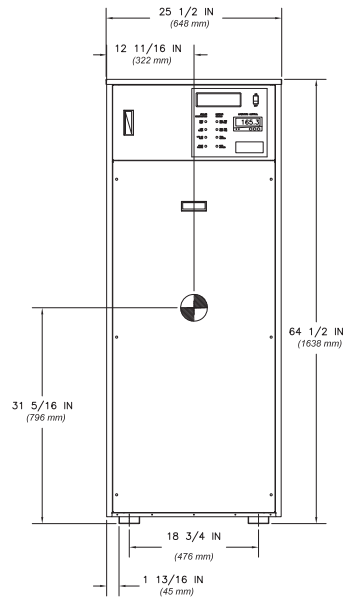
## CODE OPTIONS

<b>CSD-1</b>	Manual Reset LWCO
	200° F Maximum Operating Control and High Limit

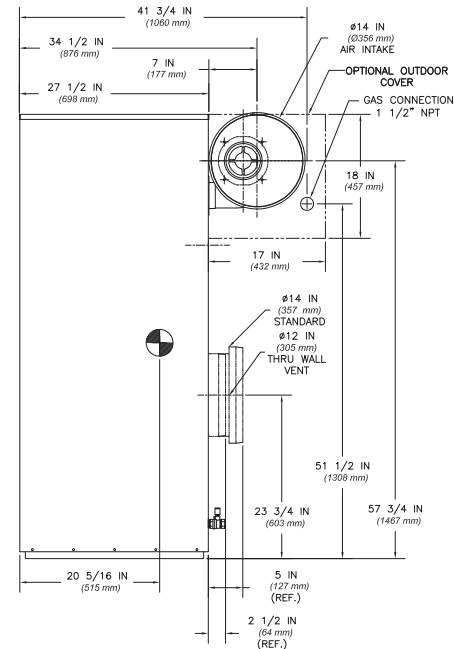
**NOTE:** Dimensions are approximate and should not be used to "rough-in" equipment.

\* Add circulator amps.

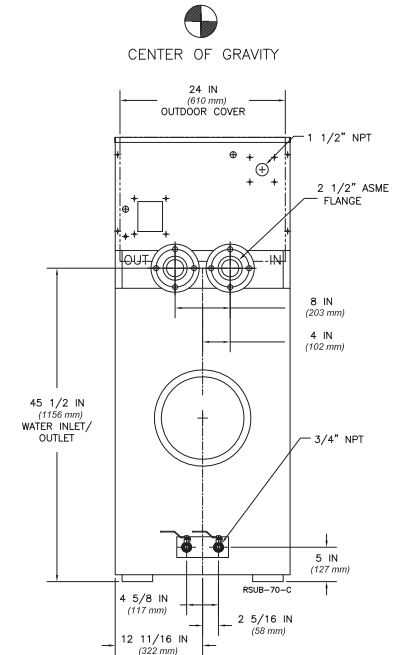
\*\*For incoming gas pressures lower than 5" W.C. natural or 11" W.C. propane, consult factory.



**FRONT VIEW**



**SIDE VIEW**



**REAR VIEW**

## A.G.A. CERTIFIED RATINGS & CAPACITIES

<b>Fuel Type</b>	Natural/Propane Gas	<b>Boiler FLA</b>	11.5*
<b>Input BTU/hr.</b>	1,950,000 / 571 kW	<b>Min. Gas Pressure Required</b>	5" W.C.**
<b>Output BTU/hr.</b>	1,657,500 / 486 kW	<b>Max. Gas Pressure Allowed</b>	14" W.C.
<b>Electrical Requirements</b>	120VAC/ 1 ph/ 60 hz/ 12 amp	<b>Operating Weight</b>	823 lbs. / 374 kg.

## TEMPERATURE RISE / PRESSURE DROP

25° F / 13.9° C				30° F / 16.7° C				35° F / 19.4° C			
Flow Rate		Pressure Drop		Flow Rate		Pressure Drop		Flow Rate		Pressure Drop	
GPM	L/s	Ft	kPa	GPM	L/s	Ft	kPa	GPM	L/s	Ft	kPa
132.6	8.4	5.14	15.1	110.5	7.0	3.70	10.8	94.7	6.0	2.80	8.1

## BOILER TRIM & CONTROLS

<b>Main Gas Valve</b>	V4944B		
<b>Firing Valve 1 1/2" CGA</b>	3.16a		
<b>Safety Valve</b>	ASCO L8214G 1 1/2"	<b>Air Switch</b>	HUBA
<b>Ignition Control</b>	Honeywell RM7897C	<b>Blower Motor</b>	Marathon 3/4 hp - FLA 9.8
<b>Operating Control (FB/FW)</b>	Jumo	<b>Relief Valve - FB</b>	1" x 1 1/4" set @ 50 psi
<b>High Limit</b>	Honeywell L4008E	<b>Relief Valve - FW</b>	3/4" x 3/4" set @ 125 psi
<b>Main Ball Valve</b>	1 1/2 "	<b>Flow Switch</b>	ITT FS251
<b>Solenoid Valve w/ Reg</b>	CV100		

## RECOVERY CAPACITY

40°F	22° C	60°F	33° C	80°F	44° C	100°F	56° C	120°F	67° C	140°F	78° C
4974	18831	3316	12554	2487	9415	1990	7532	1658	6277	1421	5380

## A.S.M.E.

<b>ASME Sect IV Htg Surface</b>	215.98 Sq. Ft. / 20.06 Sq. M.	<b>Design Data</b>	Max. 160 psig & 250° F
---------------------------------	-------------------------------	--------------------	------------------------

**REP FIRM** \_\_\_\_\_  
**SUBMITTED BY** \_\_\_\_\_  
**JOB NAME** \_\_\_\_\_  
**ARCHITECT** \_\_\_\_\_  
**ENGINEER** \_\_\_\_\_  
**CONTRACTOR** \_\_\_\_\_  
**DATE** \_\_\_\_\_

# FUTERA II 1950

**Category I or Category III Appliance**  
 (see Installation and Operation Manual for venting information)



A Division of Mestek, Inc.  
 Westfield, MA 01085  
 (413) 568-9571