

CODE OPTIONS

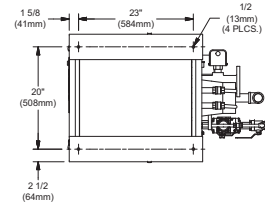
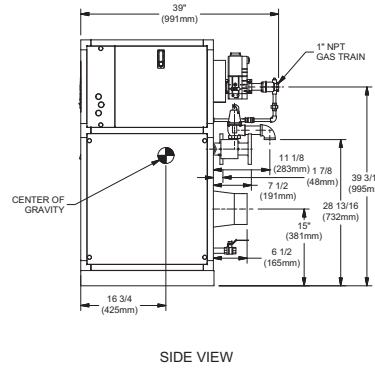
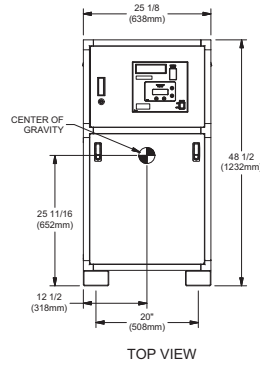
CSD-1	Manual Reset LWCO
Kentucky	200°F Maximum Operating Control and High Limit

NOTE: Dimensions are approximate and should not be used to "rough-in" equipment.

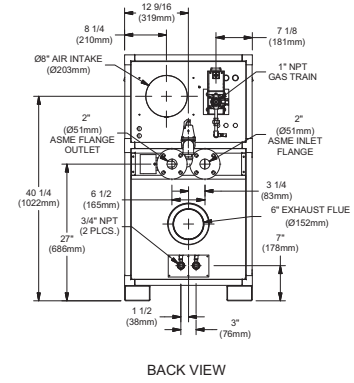
* Add circulator amps.

** For incoming gas pressures lower than 2" W.C. natural or propane, consult factory.

INDOOR UNIT



BOTTOM VIEW



BACK VIEW

RSUB-55-J

A.G.A. CERTIFIED RATINGS & CAPACITIES

Fuel Type	Natural/Propane Gas	Boiler FLA	4.9*
Input BTU/hr.	500,000 / 147 kW	Min. Gas Pressure Required	2" W.C.**
Output BTU/hr.	435,000 / 127 kW	Max. Gas Pressure Allowed	14" W.C.
Electrical Requirements	120VAC/ 1 ph/ 60 hz	Operating Weight	424 lbs. / 192 kg.

TEMPERATURE RISE / PRESSURE DROP

20° F / 11.1° C				25° F / 13.9° C			
Flow Rate		Pressure Drop		Flow Rate		Pressure Drop	
GPM	L/s	Ft	kPa	GPM	L/s	Ft	kPa
43.5	2.7	0.55	1.6	34.8	2.2	0.36	1.1

BOILER TRIM & CONTROLS

Main Gas Valve	Dungs MBC-SE	Air Switch	Cleveland NS2
Firing Valve	1"	Blower Motor	Fasco 1/2 hp - FLA 1.8
Ignition Control	Honeywell RM7895C	Relief Valve - MW	3/4" x 3/4" set @ 125 psi
Operating Control	HeatNet™	Relief Valve - MB	3/4" x 3/4" set @ 50 psi
High Limit	Jumo	Flow Switch	ITT FS251
Main Ball Valve	1"	Solenoid Valve w/ Reg	CV100

A.S.M.E.

ASME Sect IV Htg Surface	69.51 Sq. Ft. / 6.46 Sq. M.	Design Data	Max. 160 psig & 250° F
Water Volume	3.4 gal / 12.87 l (liters)		

RECOVERY CAPACITY

40°F	22° C	60°F	33° C	80°F	44° C	100°F	56° C	120°F	67° C	140°F	78° C
1306	4942	870	3295	653	2471	522	1977	435	1647	373	1412

REP FIRM _____

SUBMITTED BY _____

JOB NAME _____

ARCHITECT _____

ENGINEER _____

CONTRACTOR _____

DATE _____

FUTERA III 500

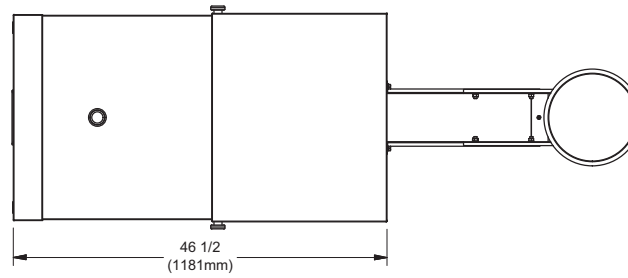
Category II or Category IV Appliance

(see Installation and Operation Manual for venting information)

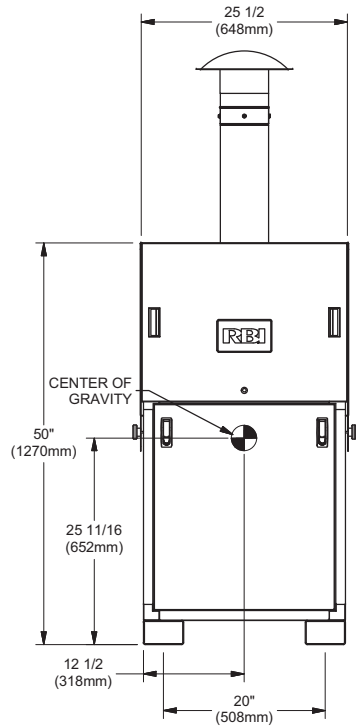


A Division of Mestek, Inc.
Westfield, MA 01085
(413) 568-9571

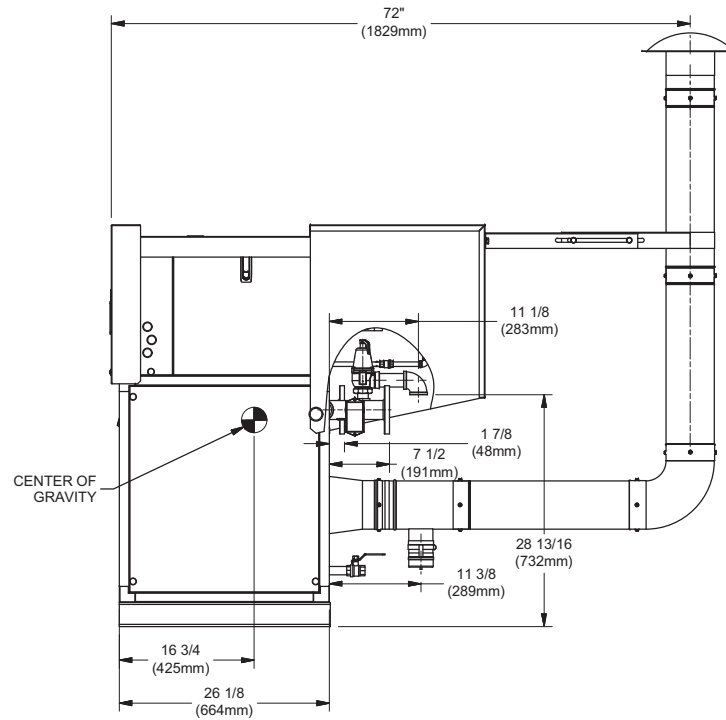
OUTDOOR UNIT



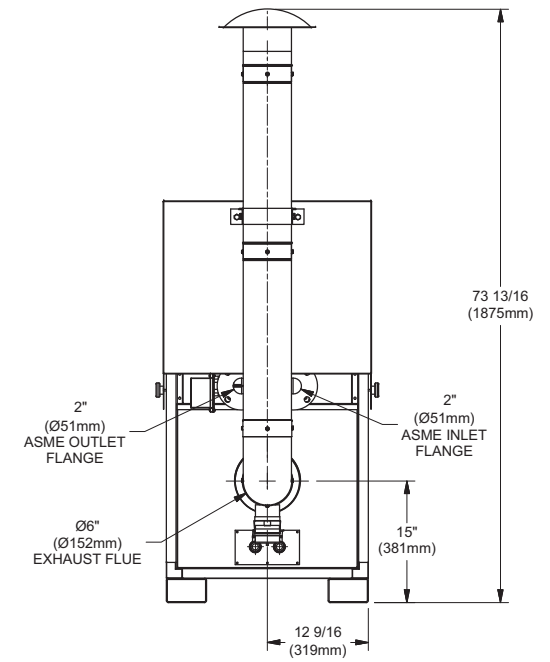
TOP VIEW



FRONT VIEW



SIDE VIEW



BACK VIEW

NOTE:
DIMENSIONS ARE SUBJECT TO CHANGE WITHOUT NOTICE.

RSUB-110-A

FUTERA III 500

CODE OPTIONS

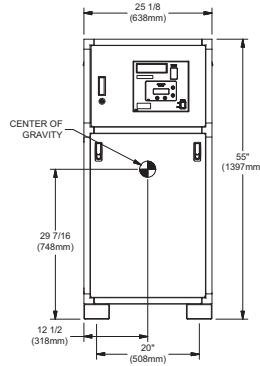
CSD-1	Manual Reset LWCO
Kentucky	200°F Maximum Operating Control and High Limit

NOTE: Dimensions are approximate and should not be used to "rough-in" equipment.

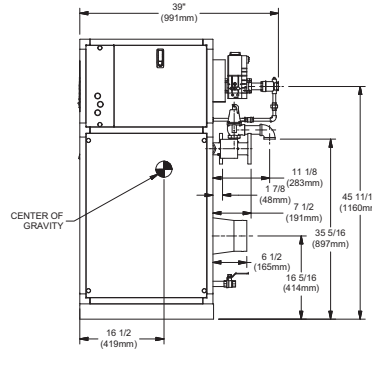
* Add circulator amps.

** For incoming gas pressures lower than 2" W.C. natural or propane, consult factory.

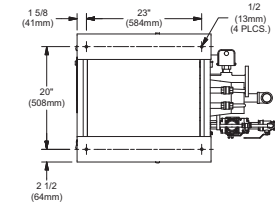
INDOOR UNIT



TOP VIEW

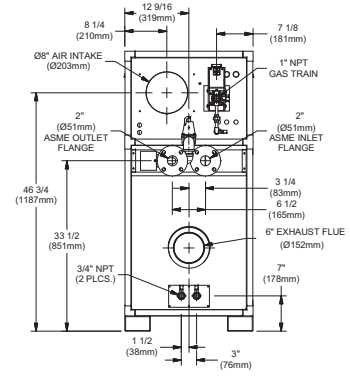


SIDE VIEW



TOP VIEW

BOTTOM VIEW



BACK VIEW

RSUB-56-J

A.G.A. CERTIFIED RATINGS & CAPACITIES

Fuel Type	Natural/Propane Gas	Boiler FLA	5.9*
Input BTU/hr.	750,000 / 220 kW	Min. Gas Pressure Required	2" W.C.**
Output BTU/hr.	652,500 / 191 kW	Max. Gas Pressure Allowed	14" W.C.
Electrical Requirements	120VAC/ 1 ph/ 60 hz	Operating Weight	554 lbs. / 252 kg.

TEMPERATURE RISE / PRESSURE DROP

20° F / 11.1° C		25° F / 13.9° C		30° F / 16.7° C		35° F / 19.4° C									
Flow Rate	Pressure Drop	Flow Rate	Pressure Drop	Flow Rate	Pressure Drop	Flow Rate	Pressure Drop								
GPM	L/s	Ft	kPa	GPM	L/s	Ft	kPa	GPM	L/s	Ft	kPa				
65.3	4.1	1.63	4.8	52.2	3.3	1.08	3.2	43.5	2.7	0.77	2.3	37.3	2.4	0.58	1.7

BOILER TRIM & CONTROLS

Main Gas Valve	Dungs MBC-SE	Air Switch	Cleveland NS2
Firing Valve	1"	Blower Motor	Fasco 1/2 hp - FLA 2.3
Ignition Control	Honeywell RM7895C	Relief Valve - MW	3/4" x 3/4" set @ 125 psi
Operating Control	HeatNet™	Relief Valve - MB	3/4" x 3/4" set @ 50 psi
High Limit	Jumo	Flow Switch	ITT FS251
Main Ball Valve	1"	Solenoid Valve w/ Reg	CV100

RECOVERY CAPACITY

40°F	22° C	60°F	33° C	80°F	44° C	100°F	56° C	120°F	67° C	140°F	78° C
1958	7413	1306	4942	979	3706	783	2965	653	2471	560	2118

A.S.M.E.

ASME Sect IV Htg Surface	97.79 Sq. Ft. / 9.08 Sq. M.	Design Data	Max. 160 psig & 250° F
Water Volume	3.7 gal / 14.01 l (liters)		

REP FIRM _____

SUBMITTED BY _____

JOB NAME _____

ARCHITECT _____

ENGINEER _____

CONTRACTOR _____

DATE _____

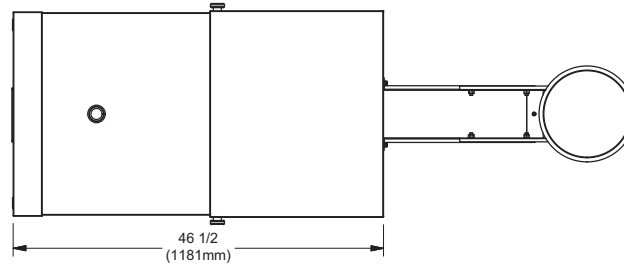
FUTERA III 750

Category II or Category IV Appliance

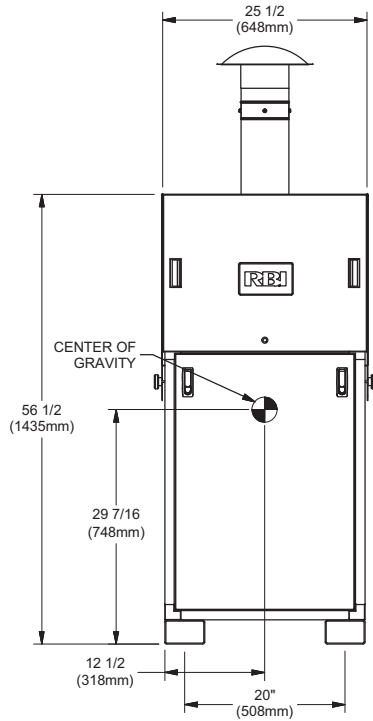
(see Installation and Operation Manual for venting information)

A Division of Mestek, Inc.
Westfield, MA 01085
(413) 568-9571

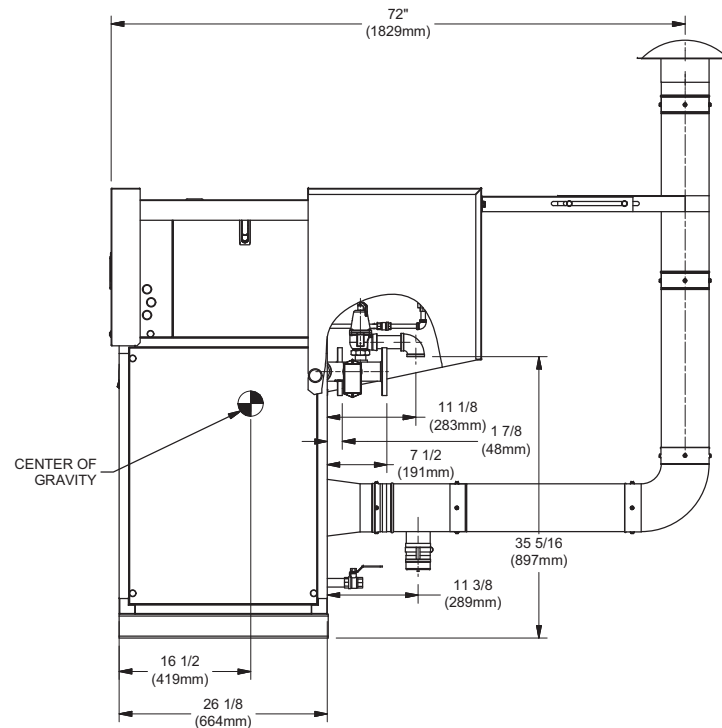
OUTDOOR UNIT



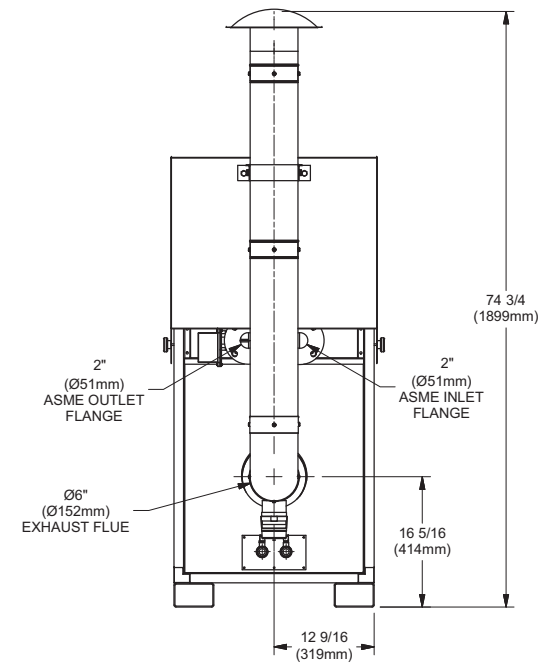
TOP VIEW



FRONT VIEW



SIDE VIEW



BACK VIEW

NOTE:
DIMENSIONS ARE SUBJECT TO CHANGE WITHOUT NOTICE.

RSUB-111-A

FUTERA III 750

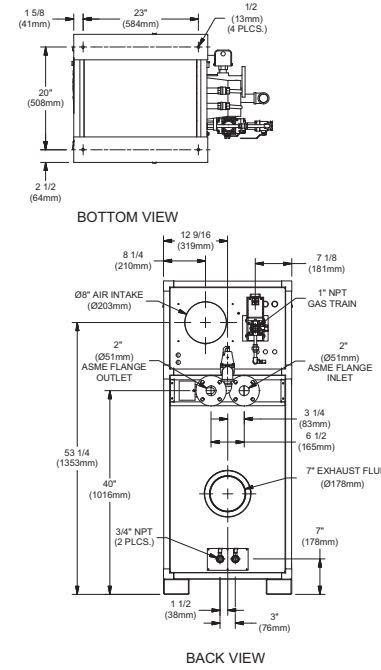
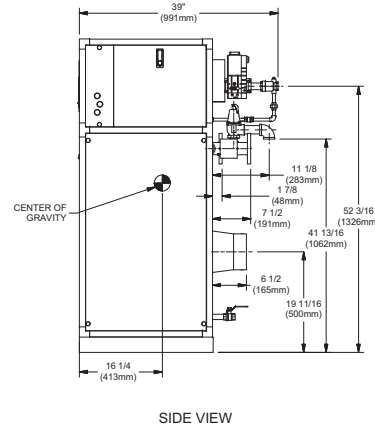
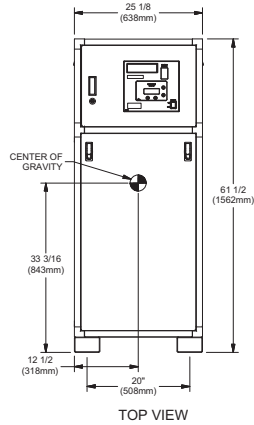
CODE OPTIONS

CSD-1	Manual Reset LWCO
Kentucky	200°F Maximum Operating Control and High Limit

NOTE: Dimensions are approximate and should not be used to "rough-in" equipment.

* Add circulator amps.
 ** For incoming gas pressures lower than 2" W.C. natural or propane, consult factory.

INDOOR UNIT



RSUB-57-J

A.G.A. CERTIFIED RATINGS & CAPACITIES

Fuel Type	Natural/Propane Gas	Boiler FLA	7.0*
Input BTU/hr.	1,000,000 / 293 kW	Min. Gas Pressure Required	2" W.C.**
Output BTU/hr.	870,000 / 255 kW	Max. Gas Pressure Allowed	14" W.C.
Electrical Requirements	120VAC/ 1 ph/ 60 hz	Operating Weight	564 lbs. / 256 kg.

TEMPERATURE RISE / PRESSURE DROP

20° F / 11.1° C		25° F / 13.9° C		30° F / 16.7° C		35° F / 19.4° C									
Flow Rate	Pressure Drop	Flow Rate	Pressure Drop	Flow Rate	Pressure Drop	Flow Rate	Pressure Drop								
GPM	L/s	Ft	kPa	GPM	L/s	Ft	kPa	GPM	L/s	Ft	kPa				
87.0	5.5	3.59	10.6	69.6	4.4	2.37	7.0	58.0	3.7	1.69	5.0	49.7	3.1	1.27	3.8

BOILER TRIM & CONTROLS

Main Gas Valve	Dungs MBC-SE	Air Switch	Cleveland NS2
Firing Valve	1 1/4"	Blower Motor	Fasco 1/2 hp - FLA 2.3
Ignition Control	Honeywell RM7895C	Relief Valve - MW	3/4" x 3/4" set @ 125 psi
Operating Control	HeatNet™	Relief Valve - MB	3/4" x 3/4" set @ 50 psi
High Limit	Jumo	Flow Switch	ITT FS251
Main Ball Valve	1 1/4"	Solenoid Valve w/ Reg	CV100

RECOVERY CAPACITY

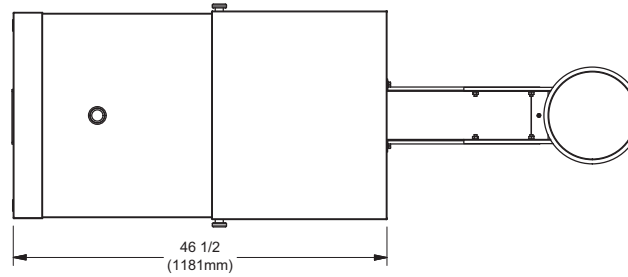
40°F	22° C	60°F	33° C	80°F	44° C	100°F	56° C	120°F	67° C	140°F	78° C
2611	9884	1741	6589	1306	4942	1044	3954	870	3295	746	2824

A.S.M.E.

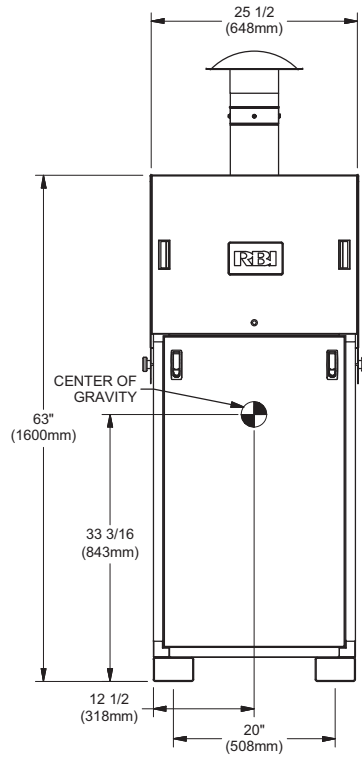
ASME Sect IV Htg Surface	126.07 Sq. Ft. / 11.71 Sq. M.	Design Data	Max. 160 psig & 250° F
Water Volume	4 gal / 15.14 l (liters)		

REP FIRM	_____	FUTERA III 1000 Category II or Category IV Appliance (see Installation and Operation Manual for venting information)
SUBMITTED BY	_____	
JOB NAME	_____	
ARCHITECT	_____	
ENGINEER	_____	
CONTRACTOR	_____	
DATE	_____	RBI A Division of Mestek, Inc. Westfield, MA 01085 (413) 568-9571

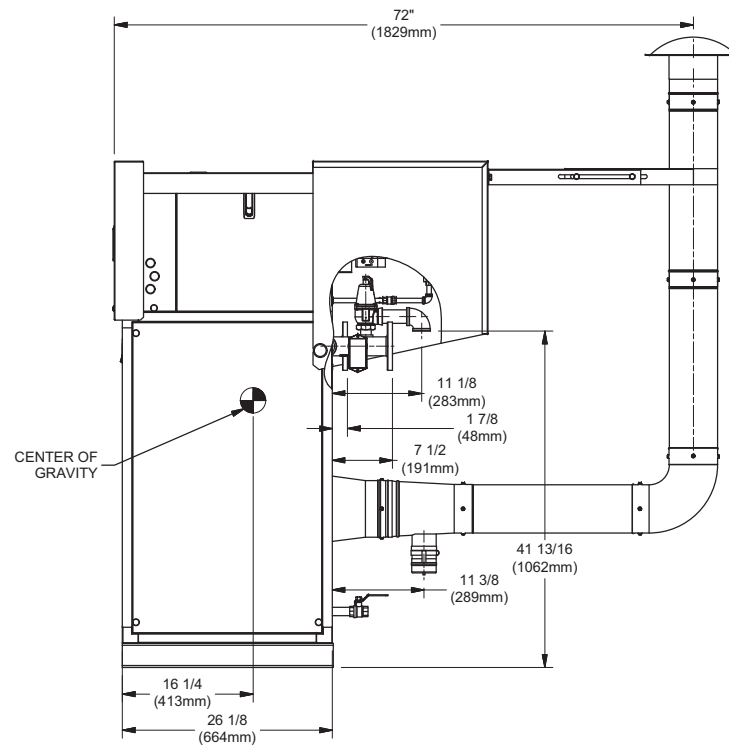
OUTDOOR UNIT



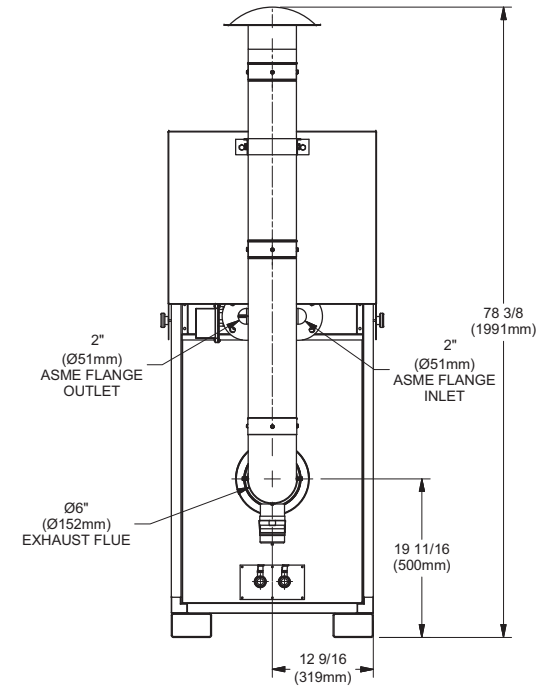
TOP VIEW



FRONT VIEW



SIDE VIEW



BACK VIEW

NOTE:
DIMENSIONS ARE SUBJECT TO CHANGE WITHOUT NOTICE.

RSUB-112-A

FUTERA III 1000

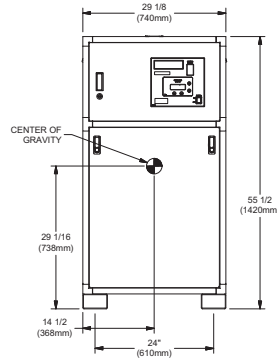
CODE OPTIONS

CSD-1	Manual Reset LWCO
Kentucky	200°F Maximum Operating Control and High Limit

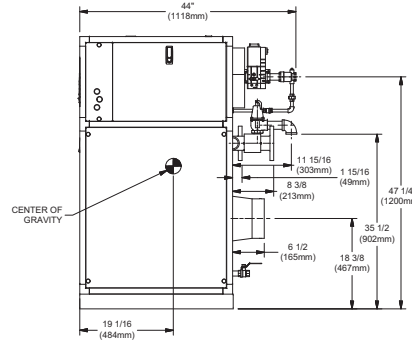
NOTE: Dimensions are approximate and should not be used to "rough-in" equipment.

* Add circulator amps.
 ** For incoming gas pressures lower than 2" W.C. natural or propane, consult factory.

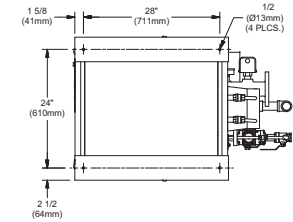
INDOOR UNIT



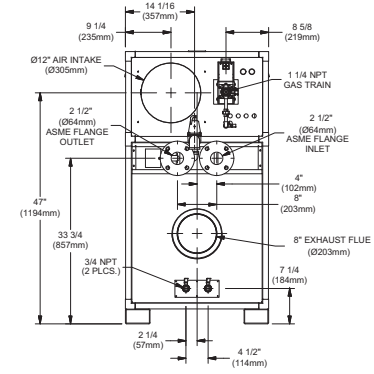
TOP VIEW



SIDE VIEW



BOTTOM VIEW



BACK VIEW

RSUB-58-J

A.G.A. CERTIFIED RATINGS & CAPACITIES

Fuel Type	Natural/Propane Gas	Boiler FLA	10.3*
Input BTU/hr.	1,250,000 / 366 kW	Min. Gas Pressure Required	2" W.C.**
Output BTU/hr.	1,087,500 / 319 kW	Max. Gas Pressure Allowed	14" W.C.
Electrical Requirements	120VAC/ 1 ph/ 60 hz/ 11 amp	Operating Weight	620 lbs. / 281 kg.

TEMPERATURE RISE / PRESSURE DROP

20° F / 11.1° C		25° F / 13.9° C		30° F / 16.7° C		35° F / 19.4° C									
Flow Rate	Pressure Drop	Flow Rate	Pressure Drop	Flow Rate	Pressure Drop	Flow Rate	Pressure Drop								
GPM	L/s	Ft	kPa	GPM	L/s	Ft	kPa	GPM	L/s	Ft	kPa	GPM	L/s	Ft	kPa
108.8	6.9	2.21	6.5	87.0	5.5	1.46	4.3	72.5	4.6	1.04	3.1	62.1	3.9	.78	2.3

BOILER TRIM & CONTROLS

Main Gas Valve	Dungs MBC-SE	Air Switch	Cleveland NS2
Firing Valve	1 1/4"	Blower Motor	Fasco 1 hp - FLA 2.1
Ignition Control	Honeywell RM7895C	Relief Valve - MW	3/4" x 3/4" set @ 125 psi
Operating Control	HeatNet™	Relief Valve - MB	3/4" x 1" set @ 50 psi
High Limit	Jumo	Flow Switch	ITT FS251
Main Ball Valve	1 1/4"	Solenoid Valve w/ Reg	CV100

A.S.M.E.

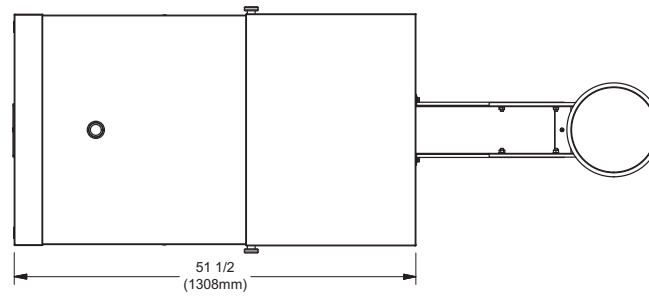
ASME Sect IV Htg Surface	133.76 Sq. Ft. / 12.43 Sq. M.	Design Data	Max. 160 psig & 250° F
Water Volume	4.7 gal / 17.79 l (liters)		

RECOVERY CAPACITY

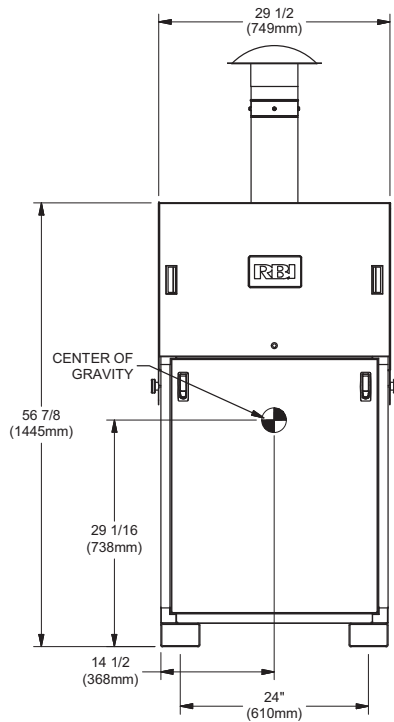
40°F	22° C	60°F	33° C	80°F	44° C	100°F	56° C	120°F	67° C	140°F	78° C
3264	12355	2176	8237	1632	6177	1306	4242	1088	4118	933	3530

REP FIRM	_____	FUTERA III 1250 Category II or Category IV Appliance (see Installation and Operation Manual for venting information)  A Division of Mestek, Inc. Westfield, MA 01085 (413) 568-9571
SUBMITTED BY	_____	
JOB NAME	_____	
ARCHITECT	_____	
ENGINEER	_____	
CONTRACTOR	_____	
DATE	_____	

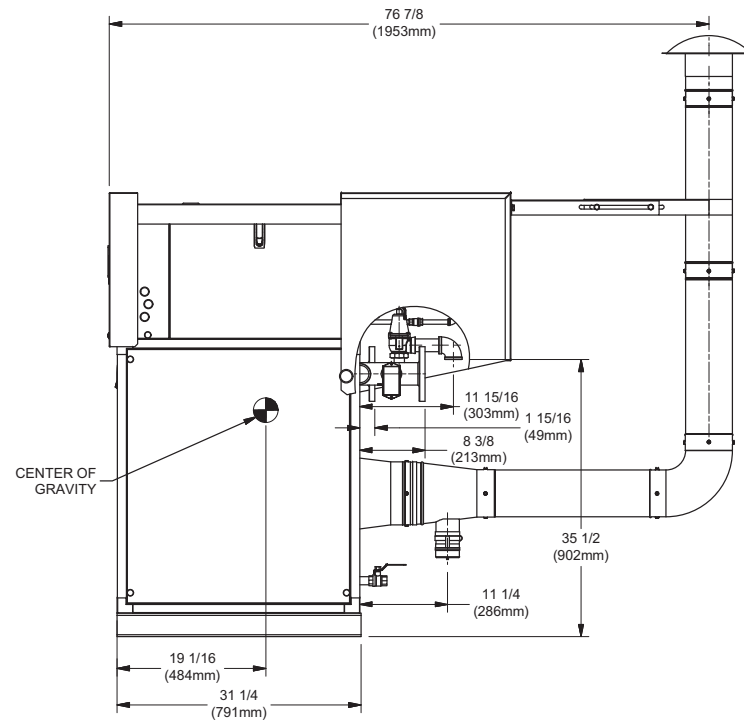
OUTDOOR UNIT



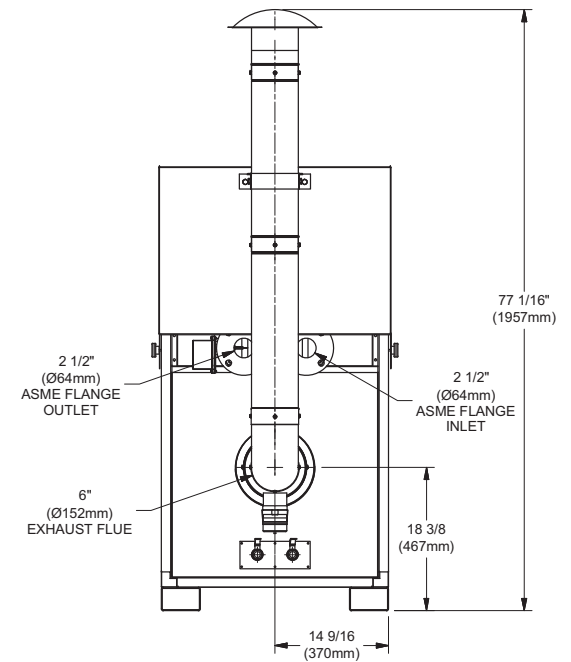
TOP VIEW



FRONT VIEW



SIDE VIEW



BACK VIEW

NOTE:
DIMENSIONS ARE SUBJECT TO CHANGE WITHOUT NOTICE.

RSUB-113-A

FUTERA III 1250

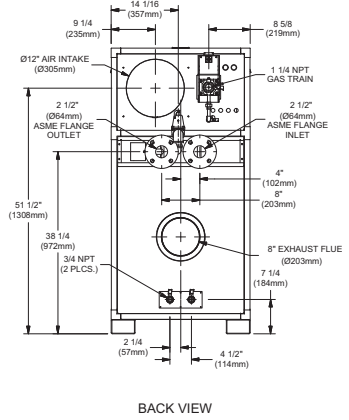
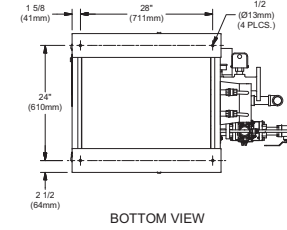
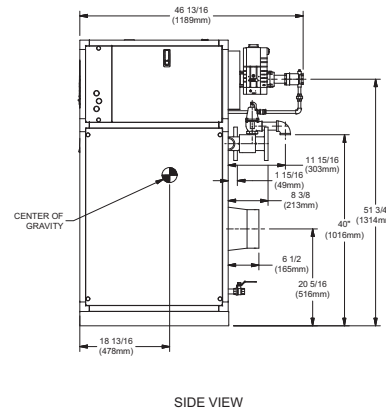
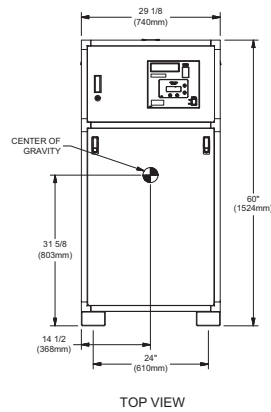
CODE OPTIONS

CSD-1	Manual Reset LWCO
Kentucky	200°F Maximum Operating Control and High Limit

NOTE: Dimensions are approximate and should not be used to "rough-in" equipment.

* Add circulator amps.
 ** For incoming gas pressures lower than 2" W.C. natural or propane, consult factory.

INDOOR UNIT



RSUB-59-J

A.G.A. CERTIFIED RATINGS & CAPACITIES

Fuel Type	Natural/Propane Gas	Boiler FLA	10.7*
Input BTU/hr.	1,500,000 / 440 kW	Min. Gas Pressure Required	2" W.C.**
Output BTU/hr.	1,305,000 / 382 kW	Max. Gas Pressure Allowed	14" W.C.
Electrical Requirements	120VAC/ 1 ph/ 60 hz/ 10 amp	Operating Weight	683 lbs. / 310 kg.

TEMPERATURE RISE / PRESSURE DROP

20° F / 11.1° C		25° F / 13.9° C		30° F / 16.7° C		35° F / 19.4° C									
Flow Rate	Pressure Drop	Flow Rate	Pressure Drop	Flow Rate	Pressure Drop	Flow Rate	Pressure Drop								
GPM	L/s	Ft	kPa	GPM	L/s	Ft	kPa	GPM	L/s	Ft	kPa				
130.5	8.2	3.73	11.0	104.4	6.6	2.46	7.3	87.0	5.5	1.76	5.2	74.6	4.7	1.32	3.9

BOILER TRIM & CONTROLS

Main Gas Valve	Dungs MBC-SE	Air Switch	Cleveland NS2
Firing Valve	1 1/4"	Blower Motor	Fasco 1 hp - FLA 2.5
Ignition Control	Honeywell RM7895C	Relief Valve - MW	3/4" x 3/4" set @ 125 psi
Operating Control	HeatNet™	Relief Valve - MB	1" x 1 1/4" set @ 50 psi
High Limit	Jumo	Flow Switch	ITT FS251
Main Ball Valve	1 1/4"	Solenoid Valve w/ Reg	CV100

RECOVERY CAPACITY

40°F	22° C	60°F	33° C	80°F	44° C	100°F	56° C	120°F	67° C	140°F	78° C
3917	14826	2611	9884	1958	7413	1567	5930	1306	4942	1119	4236

A.S.M.E.

ASME Sect IV Htg Surface	161.16 Sq. Ft. / 14.97 Sq. M.	Design Data	Max. 160 psig & 250° F
Water Volume	5 gal / 18.93 l (liters)		

REP FIRM _____

SUBMITTED BY _____

JOB NAME _____

ARCHITECT _____

ENGINEER _____

CONTRACTOR _____

DATE _____

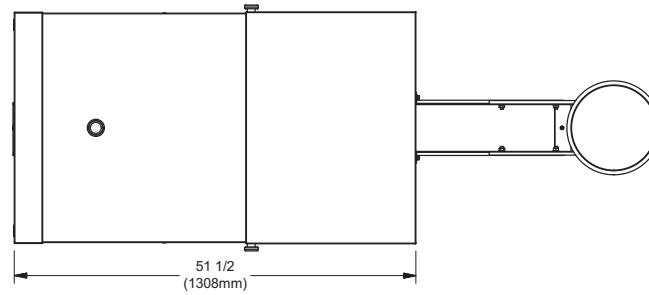
FUTERA III 1500

Category II or Category IV Appliance

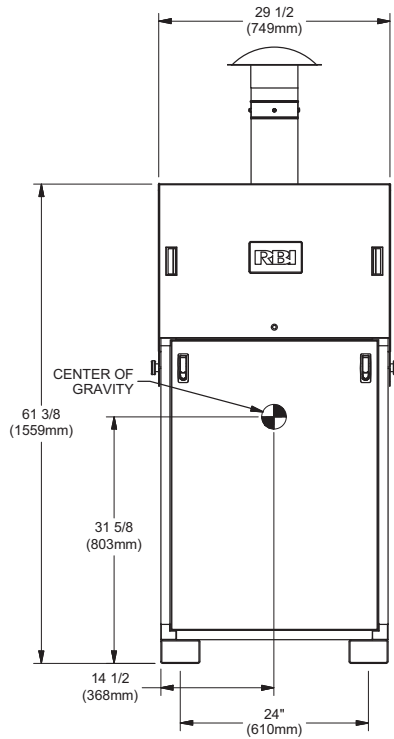
(see Installation and Operation Manual for venting information)

A Division of Mestek, Inc.
 Westfield, MA 01085
 (413) 568-9571

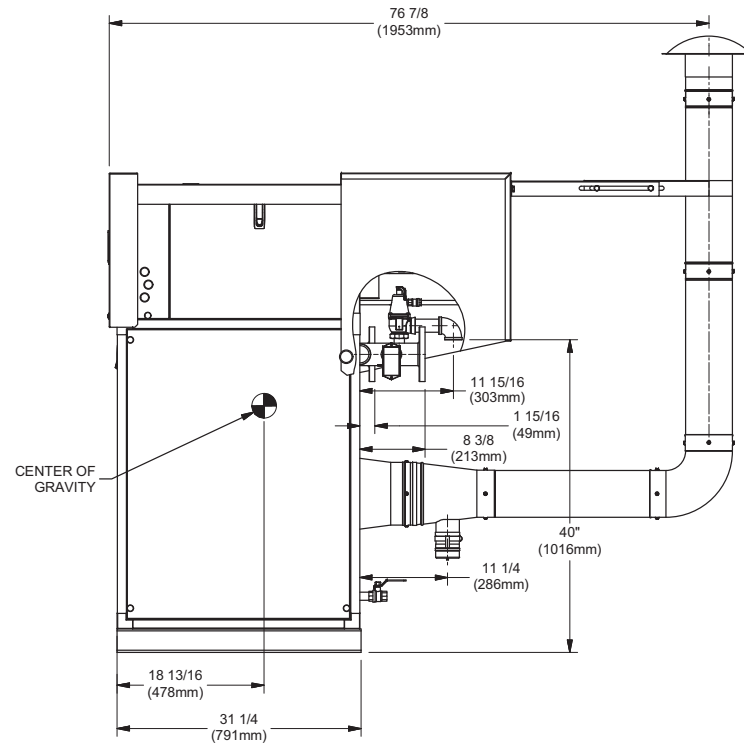
OUTDOOR UNIT



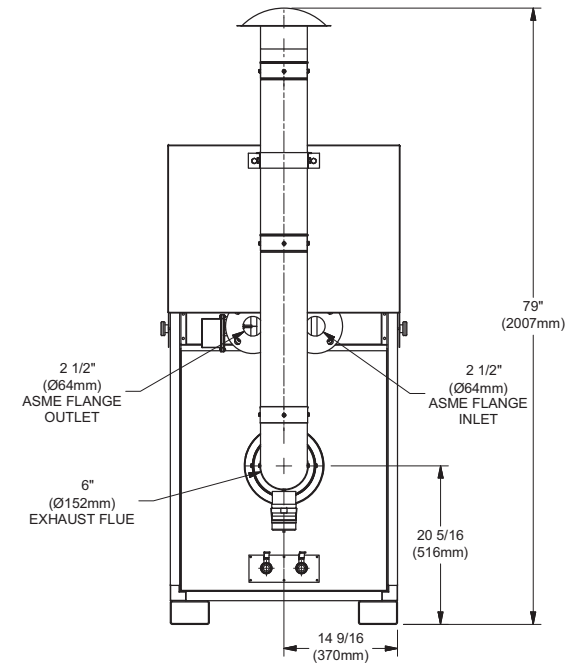
TOP VIEW



FRONT VIEW



SIDE VIEW



BACK VIEW

NOTE:
DIMENSIONS ARE SUBJECT TO CHANGE WITHOUT NOTICE.

RSUB-114-A

FUTERA III 1500

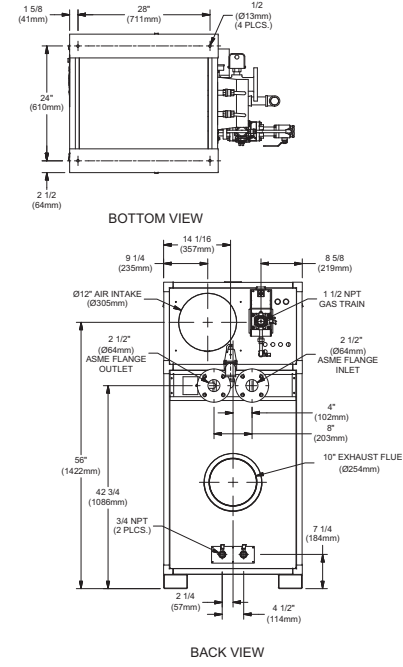
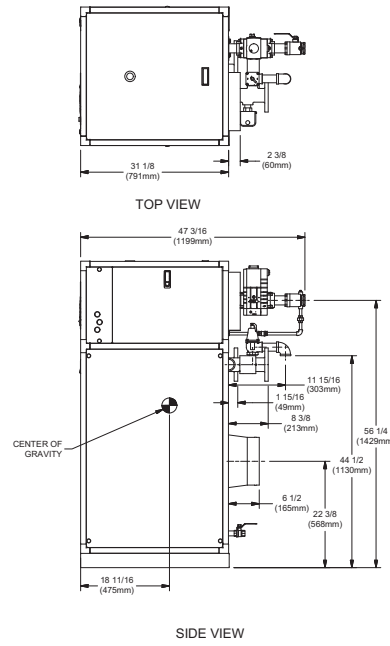
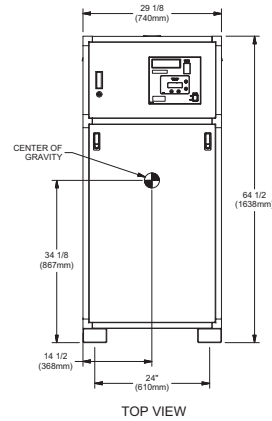
CODE OPTIONS

CSD-1	Manual Reset LWCO
Kentucky	200°F Maximum Operating Control and High Limit

NOTE: Dimensions are approximate and should not be used to "rough-in" equipment.

* Add circulator amps.
 ** For incoming gas pressures lower than 2" W.C. natural or propane, consult factory.

INDOOR UNIT



RSUB-60-J

A.G.A. CERTIFIED RATINGS & CAPACITIES

Fuel Type	Natural/Propane Gas	Boiler FLA	11.1*
Input BTU/hr.	1,750,000 / 513 kW	Min. Gas Pressure Required	2" W.C.**
Output BTU/hr.	1,522,500 / 446 kW	Max. Gas Pressure Allowed	14" W.C.
Electrical Requirements	120VAC/ 1 ph/ 60 hz/ 13 amp	Operating Weight	743 lbs. / 337 kg.

TEMPERATURE RISE / PRESSURE DROP

25° F / 13.9° C		30° F / 16.7° C		35° F / 19.4° C							
Flow Rate	Pressure Drop	Flow Rate	Pressure Drop	Flow Rate	Pressure Drop						
GPM	L/s	Ft	kPa	GPM	L/s	Ft	kPa	GPM	L/s	Ft	kPa
121.8	7.7	3.84	11.3	101.5	6.4	2.74	8.1	87.0	5.5	2.06	6.1

BOILER TRIM & CONTROLS

Main Gas Valve	Dungs MBC-SE	Air Switch	Cleveland NS2
Firing Valve	1 1/2"	Blower Motor	Fasco 1 hp - FLA 3.0
Ignition Control	Honeywell RM7895C	Relief Valve - MW	3/4" x 3/4" set @ 125 psi
Operating Control	HeatNet™	Relief Valve - MB	1" x 1 1/4" set @ 50 psi
High Limit	Jumo	Flow Switch	ITT FS251
Main Ball Valve	1 1/2"	Solenoid Valve w/ Reg	CV100

RECOVERY CAPACITY

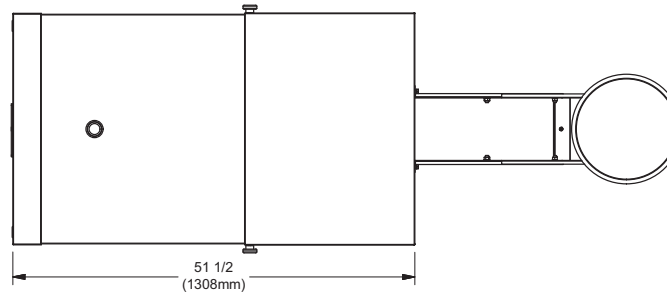
40°F	22° C	60°F	33° C	80°F	44° C	100°F	56° C	120°F	67° C	140°F	78° C
4569	17297	3046	11531	2285	8648	1828	6919	1523	5766	1306	4942

A.S.M.E.

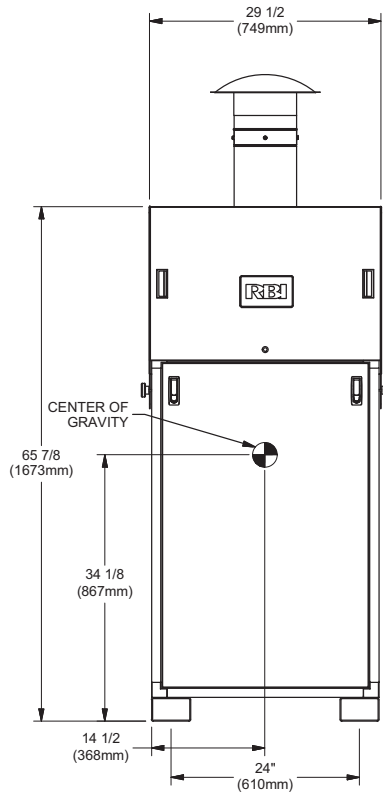
ASME Sect IV Htg Surface	188.57 Sq. Ft. / 17.52 Sq. M.	Design Data	Max. 160 psig & 250° F
Water Volume	5.3 gal / 20.06 l (liters)		

REP FIRM	_____	<h2 style="margin: 0;">FUTERA III 1750</h2> <p style="margin: 0;">Category II or Category IV Appliance</p> <p style="margin: 0;">(see Installation and Operation Manual for venting information)</p> <div style="display: flex; align-items: center; justify-content: center;"> <div style="text-align: left;"> <p>A Division of Mestek, Inc. Westfield, MA 01085 (413) 568-9571</p> </div> </div>
SUBMITTED BY	_____	
JOB NAME	_____	
ARCHITECT	_____	
ENGINEER	_____	
CONTRACTOR	_____	
DATE	_____	

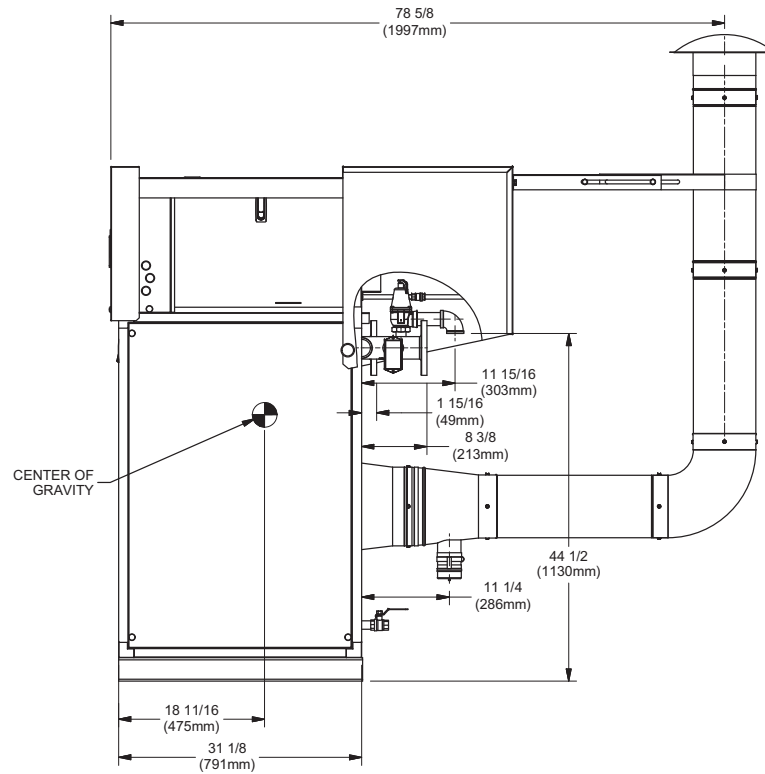
OUTDOOR UNIT



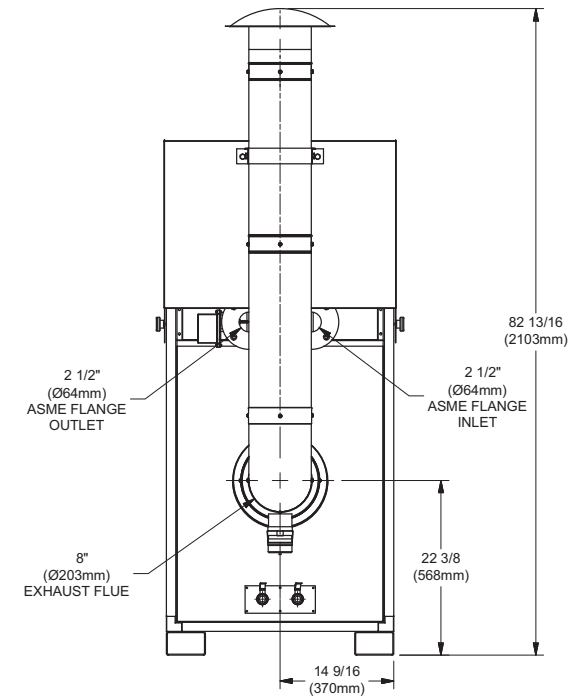
TOP VIEW



FRONT VIEW



SIDE VIEW



BACK VIEW

NOTE:
DIMENSIONS ARE SUBJECT TO CHANGE WITHOUT NOTICE.

RSUB-115-A

FUTERA III 1750

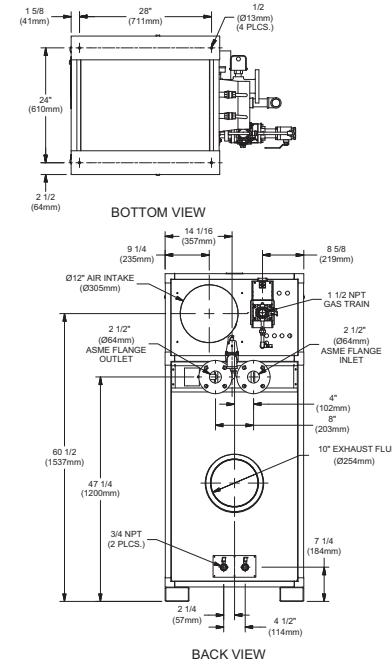
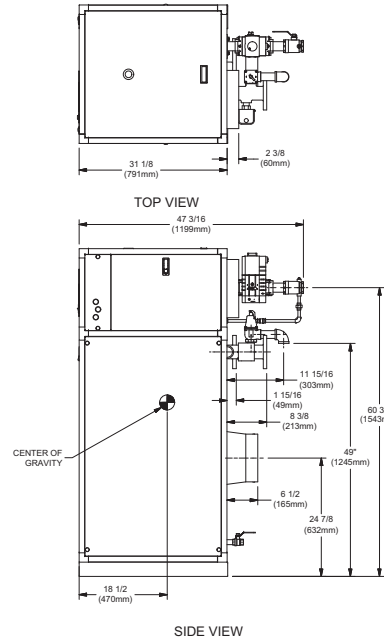
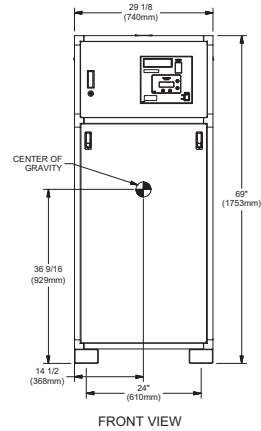
CODE OPTIONS

CSD-1	Manual Reset LWCO
Kentucky	200°F Maximum Operating Control and High Limit

NOTE: Dimensions are approximate and should not be used to "rough-in" equipment.

* Add circulator amps.
 ** For incoming gas pressures lower than 2" W.C. natural or propane, consult factory.

INDOOR UNIT



RSUB-61-J

A.G.A. CERTIFIED RATINGS & CAPACITIES

Fuel Type	Natural/Propane Gas	Boiler FLA	11.5*
Input BTU/hr.	1,999,000 / 586 kW	Min. Gas Pressure Required	2" W.C.**
Output BTU/hr.	1,739,130 / 510 kW	Max. Gas Pressure Allowed	14" W.C.
Electrical Requirements	120VAC/ 1 ph/ 60 hz/ 13 amp	Operating Weight	823 lbs. / 374 kg.

TEMPERATURE RISE / PRESSURE DROP

25° F / 13.9° C		30° F / 16.7° C		35° F / 19.4° C							
Flow Rate	Pressure Drop	Flow Rate	Pressure Drop	Flow Rate	Pressure Drop						
GPM	L/s	Ft	kPa	GPM	L/s	Ft	kPa	GPM	L/s	Ft	kPa
139.2	8.8	5.63	16.6	116.0	7.3	4.01	11.8	99.4	6.3	3.02	8.9

BOILER TRIM & CONTROLS

Main Gas Valve	Dungs MBC-SE	Air Switch	Cleveland NS2
Firing Valve	1 1/2"	Blower Motor	Fasco 1 hp - FLA 3.0
Ignition Control	Honeywell RM7895C	Relief Valve - MW	3/4" x 3/4" set @ 125 psi
Operating Control	HeatNet™	Relief Valve - MB	1" x 1 1/4" set @ 50 psi
High Limit	Jumo	Flow Switch	ITT FS251
Main Ball Valve	1 1/2"	Solenoid Valve w/ Reg	CV100

RECOVERY CAPACITY

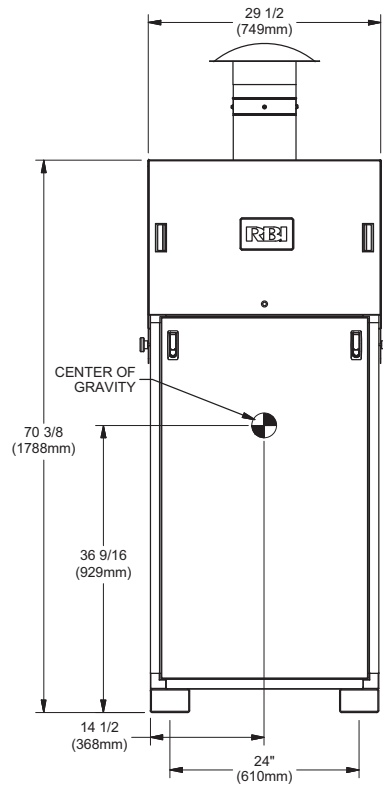
40°F	22° C	60°F	33° C	80°F	44° C	100°F	56° C	120°F	67° C	140°F	78° C
5219	19758	3480	13172	2610	9879	2088	7903	1740	6586	1491	5645

A.S.M.E.

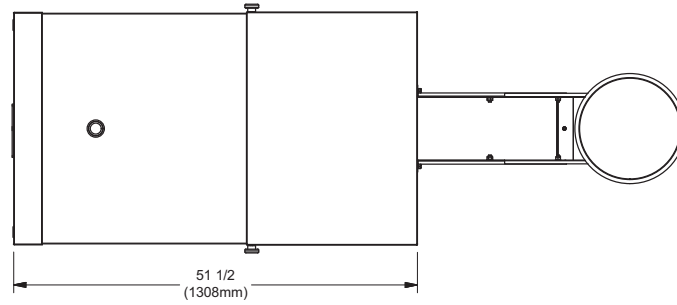
ASME Sect IV Htg Surface	215.98 Sq. Ft. / 20.06 Sq. M.	Design Data	Max. 160 psig & 250° F
Water Volume	5.7 gal / 21.58 l (liters)		

REP FIRM	_____	<h2 style="margin: 0;">FUTERA III 2000</h2> <p style="margin: 0;">Category II or Category IV Appliance</p> <p style="margin: 0;">(see Installation and Operation Manual for venting information)</p>
SUBMITTED BY	_____	
JOB NAME	_____	
ARCHITECT	_____	
ENGINEER	_____	
CONTRACTOR	_____	<p>A Division of Mestek, Inc. Westfield, MA 01085 (413) 568-9571</p>
DATE	_____	

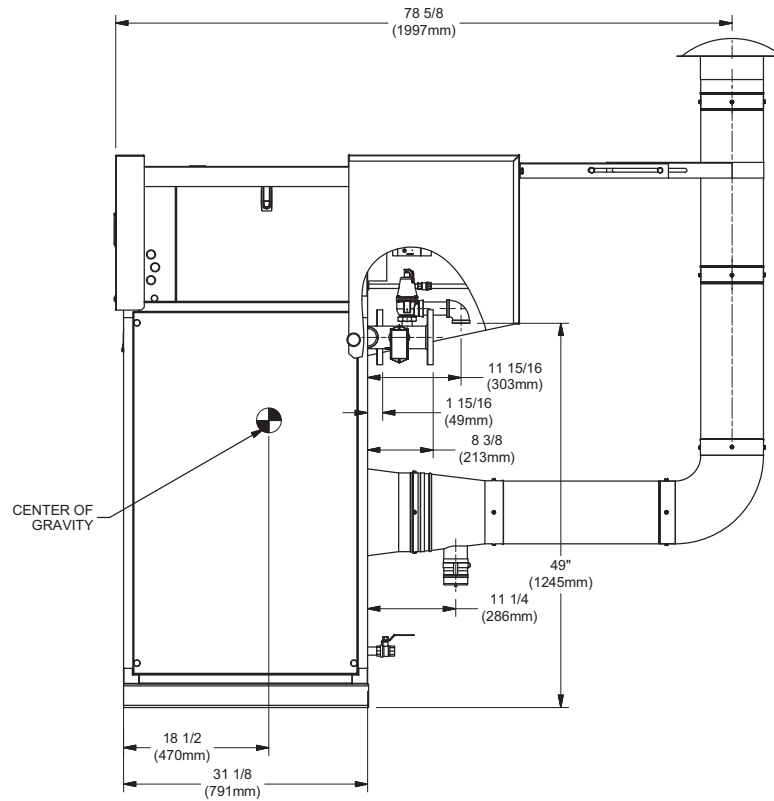
OUTDOOR UNIT



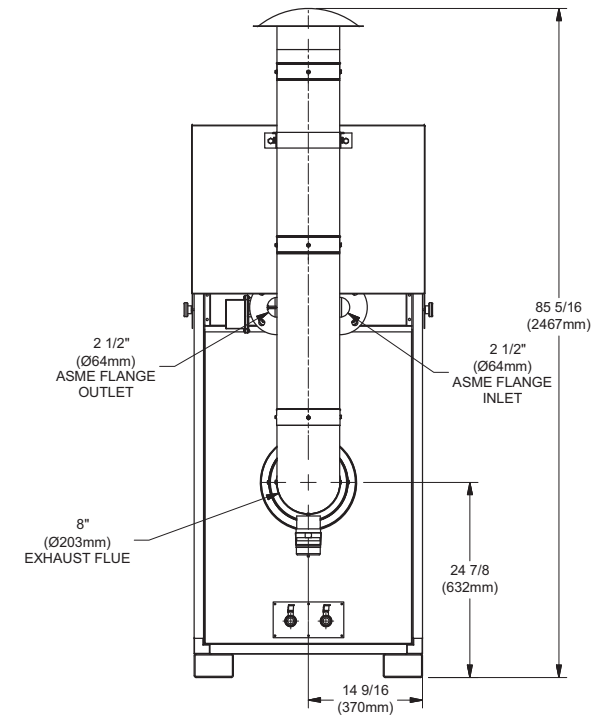
FRONT VIEW



TOP VIEW



SIDE VIEW



BACK VIEW

NOTE:
DIMENSIONS ARE SUBJECT TO CHANGE WITHOUT NOTICE.

RSUB-116-A

FUTERA III 2000