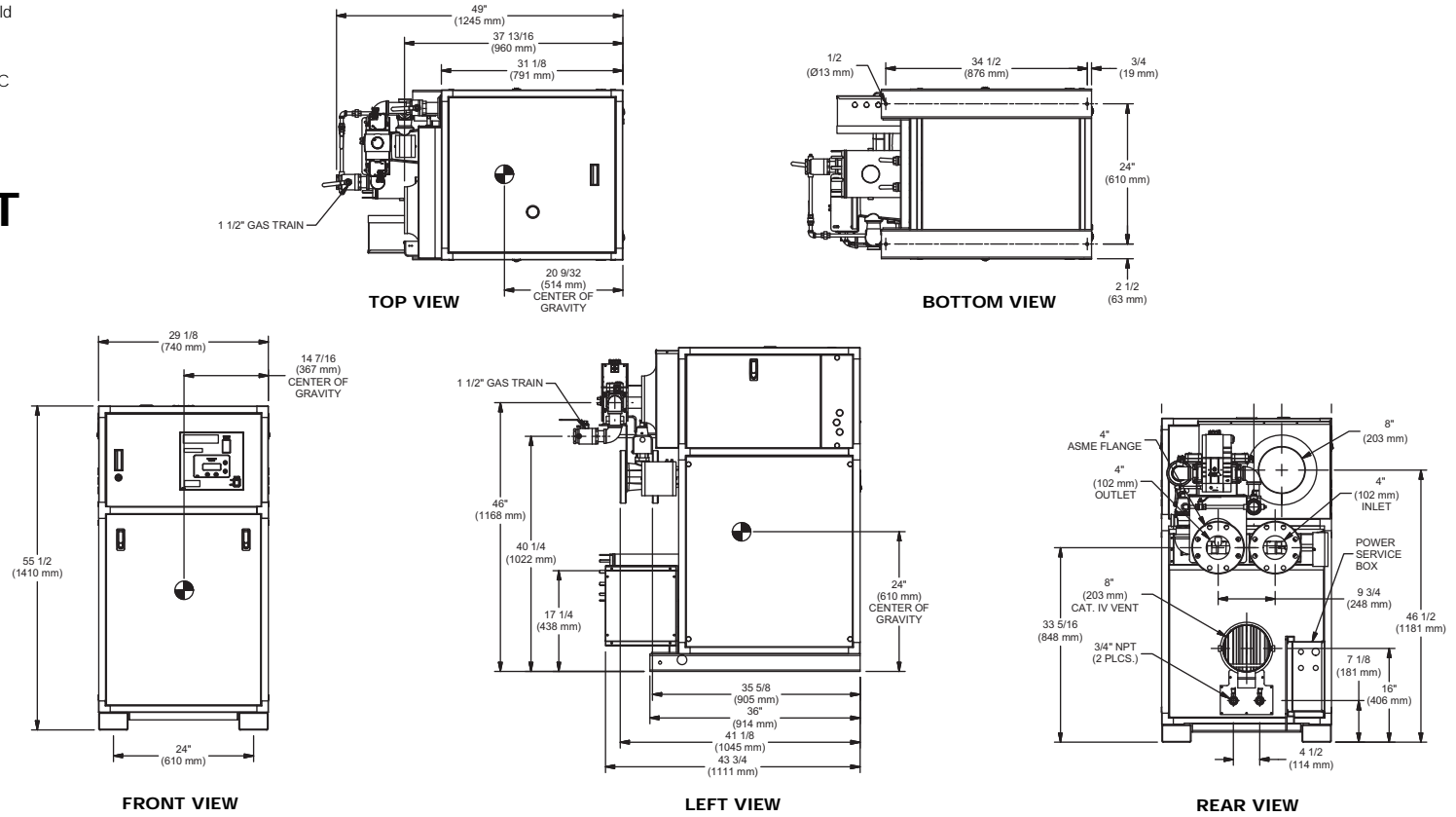


**NOTE:** Dimensions are approximate and should not be used to "rough-in" equipment.

\* Add circulator amps.

\*\*For incoming gas pressures lower than 3.5" WC natural, consult factory.

# INDOOR UNIT



RSUB 83 REV. B

## AGA CERTIFIED RATINGS & CAPACITIES

<b>Fuel Type</b>	Natural Gas	<b>Boiler FLA</b>	17" @ 230V NEC
<b>Input BTU/hr.</b>	2,500,000 / 733 kW	<b>Min. Gas Pressure Required</b>	3.5" WC**
<b>Output BTU/hr.</b>	2,147,500 / 629 kW	<b>Max. Gas Pressure Allowed</b>	14" WC
<b>Electrical Requirements</b>	(L1, L2, NEU, GND) 208-240 VAC/1 ph/60 hz	<b>Operating Weight</b>	1,069 lbs. / 485 kgs.

## TEMPERATURE RISE / PRESSURE DROP

20°F / 11.1°C				25°F / 13.9°C				30°F / 16.7°C				35°F / 19.4°C			
Flow Rate		Pressure Drop		Flow Rate		Pressure Drop		Flow Rate		Pressure Drop		Flow Rate		Pressure Drop	
GPM	L/s	Ft	kPa	GPM	L/s	Ft	kPa	GPM	L/s	Ft	kPa	GPM	L/s	Ft	kPa
217.5	13.7	10.05	29.6	174.0	11.0	6.45	19.0	145.0	9.1	3.71	10.9	124.3	7.8	2.79	8.2

## BOILER TRIM & CONTROLS

<b>Main Gas Valve Body</b>	Dungs MBC 2500	<b>High Limit (Manual Reset)</b>	Jumo
<b>Firing Valve</b>	Honeywell B200T1066 1-1/2"	<b>High Limit (Auto Reset)</b>	Jumo
<b>Main Ball Valve</b>	1-1/2"	<b>Blocked Flue Switch</b>	HUBA
<b>Manual Pilot Valve</b>	1/4" Honeywell B528	<b>Air Switch</b>	HUBA
<b>Solenoid Valve w/Reg</b>	CV100	<b>Blower Motor</b>	American Fan 3 HP - FLA 8
<b>Ignition Control</b>	Honeywell RM7895C	<b>Relief Valve - MB</b>	1" x 1-1/4" set @ 50 psi
<b>Operating Control</b>	HeatNet™	<b>Relief Valve - MW</b>	3/4" x 3/4" set @ 125 psi
		<b>Flow Switch</b>	ITT FS8W

## RECOVERY CAPACITY

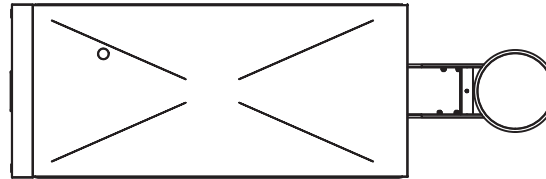
40°F	22°C	60°F	33°C	80°F	44°C	100°F	56°C	120°F	67°C	140°F	78°C
6,445	24,397	4,297	16,265	3,223	12,199	2,578	9,759	2,148	8,132	1,841	6,971

## ASME

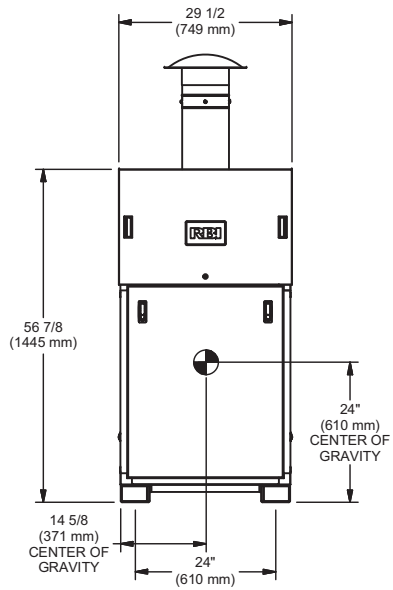
<b>ASME Sect IV Htg Surface</b>	267.5 Sq. Ft. / 24.85 Sq. M.	<b>Design Data</b>	Max. 160 psig & 250°F
<b>Water Volume</b>	12.1 gal / 45.80 l (liters)		

<b>REP FIRM</b>	_____	<b>FUTERA XLF 2500</b>
<b>SUBMITTED BY</b>	_____	
<b>JOB NAME</b>	_____	
<b>ARCHITECT</b>	_____	
<b>ENGINEER</b>	_____	
<b>CONTRACTOR</b>	_____	<b>Category II or Category IV Appliance</b> (see Installation and Operation Manual for venting information)
<b>DATE</b>	_____	<b>RBI</b> ® A Division of Mestek, Inc. Westfield, MA 01085 (413) 568-9571

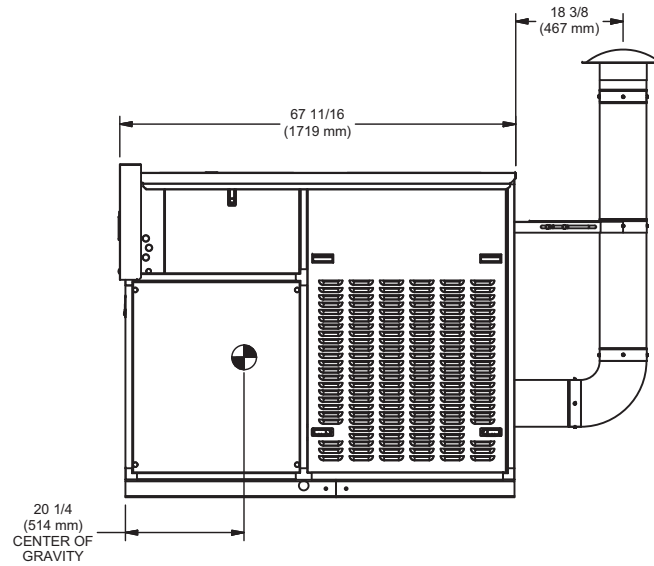
# OUTDOOR UNIT



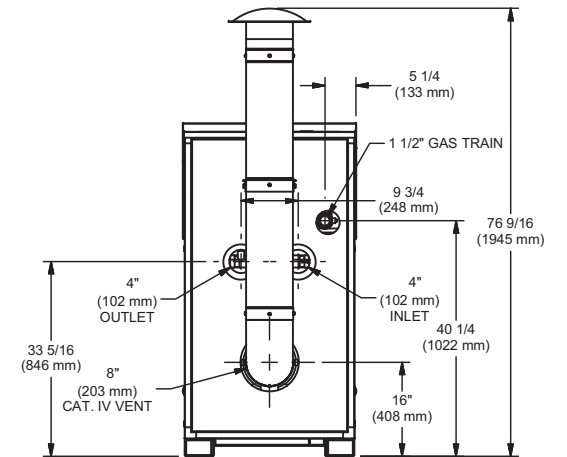
TOP VIEW



FRONT VIEW



SIDE VIEW



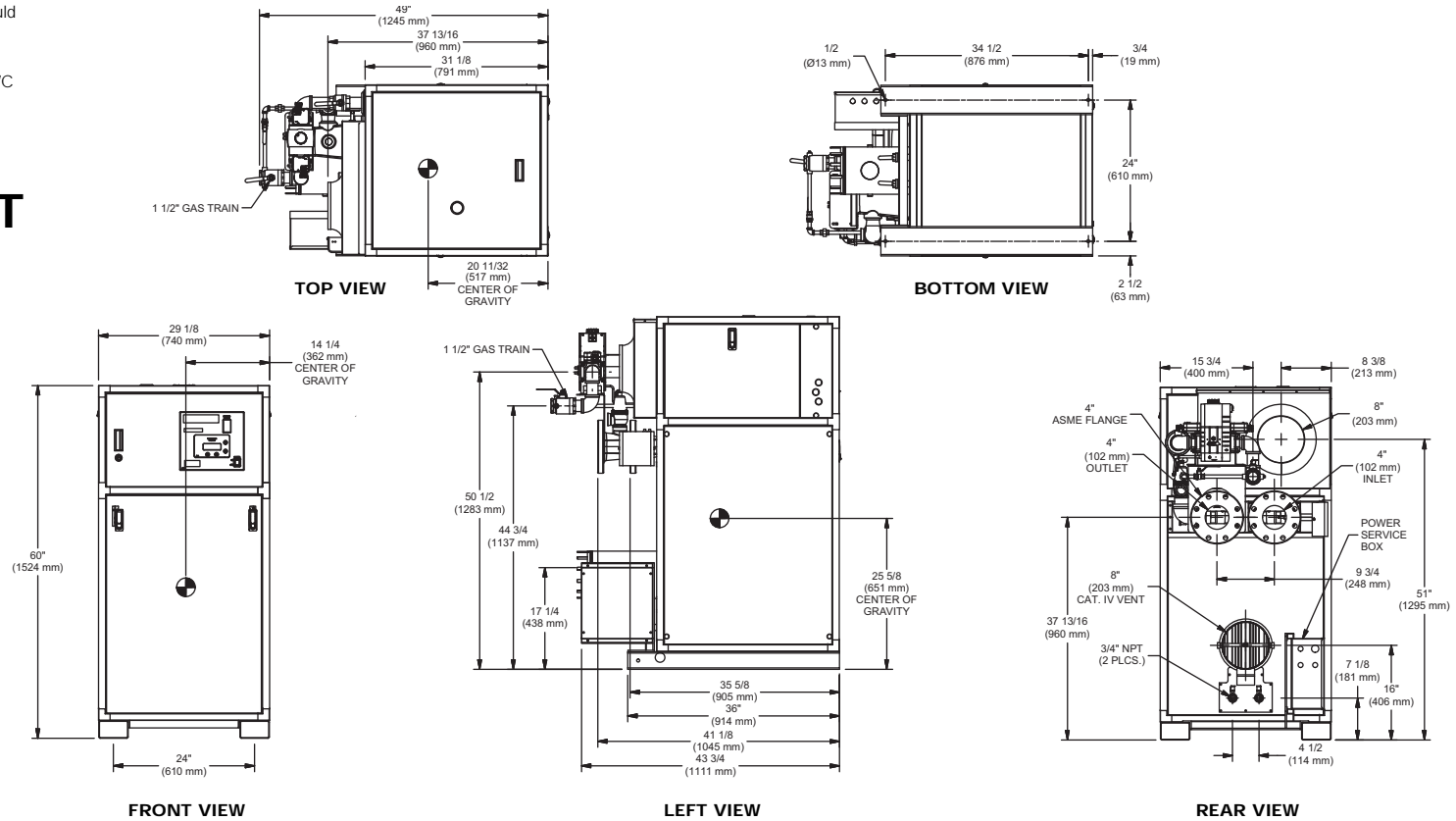
BACK VIEW

**NOTE:** Dimensions are approximate and should not be used to "rough-in" equipment.

\* Add circulator amps.

\*\*For incoming gas pressures lower than 3.5" WC natural, consult factory.

# INDOOR UNIT



RSUB 84 REV. B

## AGA CERTIFIED RATINGS & CAPACITIES

<b>Fuel Type</b>	Natural Gas	<b>Boiler FLA</b>	17* @ 230V NEC
<b>Input BTU/hr.</b>	3,000,000 / 879 kW	<b>Min. Gas Pressure Required</b>	3.5" WC**
<b>Output BTU/hr.</b>	2,568,000 / 752 kW	<b>Max. Gas Pressure Allowed</b>	14" WC
<b>Electrical Requirements</b>	(L1, L2, NEU, GND) 208-240 VAC/1 ph/60 hz	<b>Operating Weight</b>	1,142 lbs. / 518 kgs.

## TEMPERATURE RISE / PRESSURE DROP

20°F / 11.1°C				25°F / 13.9°C				30°F / 16.7°C				35°F / 19.4°C			
Flow Rate		Pressure Drop		Flow Rate		Pressure Drop		Flow Rate		Pressure Drop		Flow Rate		Pressure Drop	
GPM	L/s	Ft	kPa	GPM	L/s	Ft	kPa	GPM	L/s	Ft	kPa	GPM	L/s	Ft	kPa
261.0	16.5	15.20	44.8	208.8	13.2	9.73	28.7	174.0	11.0	6.75	19.9	149.1	9.4	4.65	13.7

## BOILER TRIM & CONTROLS

<b>Main Gas Valve Body</b>	Dungs MBC 2500	<b>High Limit (Manual Reset)</b>	Jumo
<b>Firing Valve</b>	Honeywell B200T1066 1-1/2"	<b>High Limit (Auto Reset)</b>	Jumo
<b>Main Ball Valve</b>	1-1/2"	<b>Blocked Flue Switch</b>	HUBA
<b>Manual Pilot Valve</b>	1/4" Honeywell B528	<b>Air Switch</b>	HUBA
<b>Solenoid Valve w/Reg</b>	CV100	<b>Blower Motor</b>	American Fan 3 HP - FLA 8
<b>Ignition Control</b>	Honeywell RM7895C	<b>Relief Valve - MB</b>	1-1/4" x 1-1/2" set @ 50 psi
<b>Operating Control</b>	HeatNet™	<b>Relief Valve - MW</b>	3/4" x 3/4" set @ 125 psi
		<b>Flow Switch</b>	ITT FS8W

## RECOVERY CAPACITY

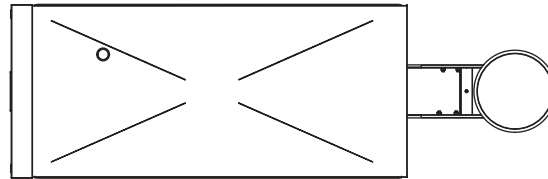
40°F	22°C	60°F	33°C	80°F	44°C	100°F	56°C	120°F	67°C	140°F	78°C
7,707	29,175	5,138	19,450	3,854	14,587	3,083	11,670	2,569	9,725	2,202	8,336

## ASME

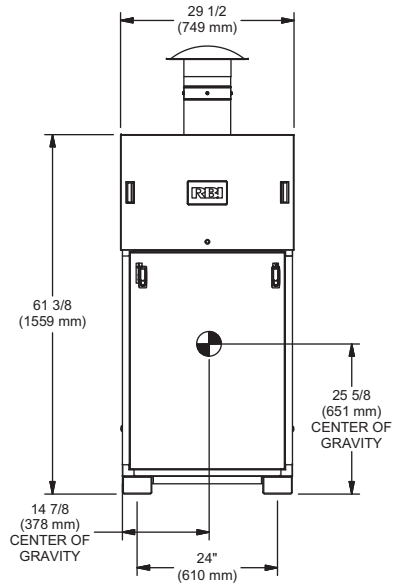
<b>ASME Sect IV Htg Surface</b>	325.0 Sq. Ft. / 30.19 Sq. M.	<b>Design Data</b>	Max. 160 psig & 250°F
<b>Water Volume</b>	12.8 gal / 48.45 l (liters)		

<b>REP FIRM</b>	_____	<b>FUTERA XLF 3000</b>
<b>SUBMITTED BY</b>	_____	
<b>JOB NAME</b>	_____	
<b>ARCHITECT</b>	_____	
<b>ENGINEER</b>	_____	
<b>CONTRACTOR</b>	_____	<b>Category II or Category IV Appliance</b>
<b>DATE</b>	_____	(see Installation and Operation Manual for venting information)
		<b>RBI</b> ® A Division of Mestek, Inc. Westfield, MA 01085 (413) 568-9571

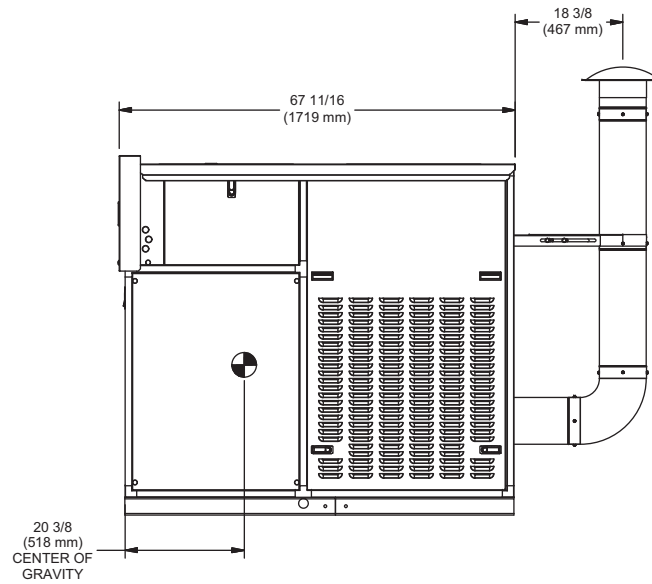
# OUTDOOR UNIT



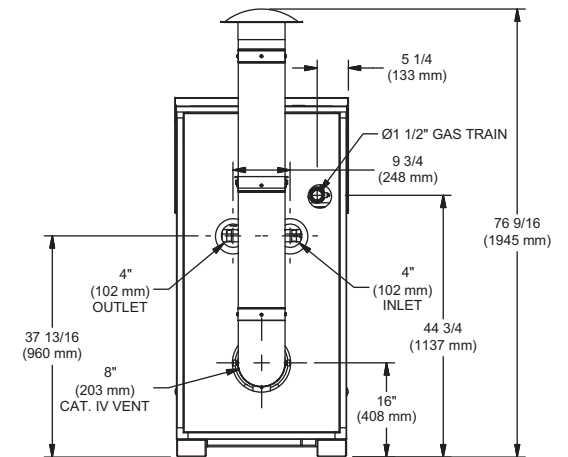
TOP VIEW



FRONT VIEW



SIDE VIEW



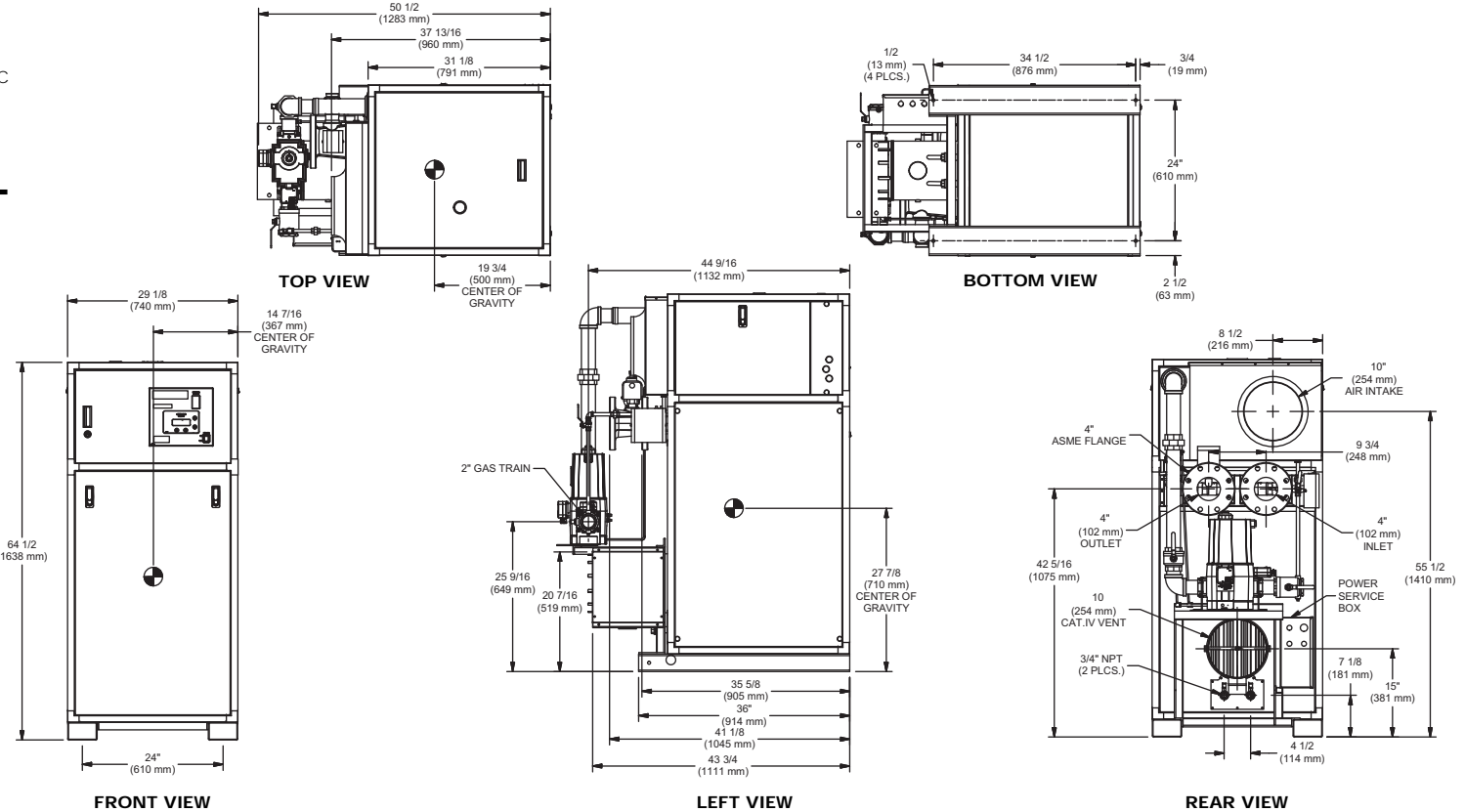
BACK VIEW

NOTE: Dimensions are approximate and should not be used to "rough-in" equipment.

\* Add circulator amps.

\*\*For incoming gas pressures lower than 3.5" WC natural, consult factory.

# INDOOR UNIT



RSUB 85 REV. A

## AGA CERTIFIED RATINGS & CAPACITIES

Fuel Type	Natural	Boiler FLA	17" @ 230V NEC
Input BTU/hr.	3,500,000 / 1,026 kW	Min. Gas Pressure Required	3.5" WC**
Output BTU/hr.	2,999,500 / 879 kW	Max. Gas Pressure Allowed	14" WC
<b>Electrical Requirements</b>	(L1, L2, NEU, GND) 208-240 VAC/1 ph/60 hz	Operating Weight	1215 lbs. / 552 kgs

## TEMPERATURE RISE / PRESSURE DROP

20°F / 11.1°C		25°F / 13.9°C		30°F / 16.7°C		35°F / 19.4°C									
Flow Rate	Pressure Drop	Flow Rate	Pressure Drop	Flow Rate	Pressure Drop	Flow Rate	Pressure Drop								
GPM	L/s	Ft	kPa	GPM	L/s	Ft	kPa	GPM	L/s	Ft	kPa				
304.5*	19.2	20.26	59.7	243.6	15.4	13.40	39.5	203.0	12.8	9.56	28.2	174.0	11.0	7.19	21.2

\*Flow exceeds recommended maximum use a greater temperature rise or consult manufacturer. Cupronickel heat exchanger should be considered.

## BOILER TRIM & CONTROLS

Main Gas Valve Body	Dungs MBC 4000	High Limit (Manual Reset)	Jumo
Firing Valve	Honeywell B200T1066 2"	High Limit (Auto Reset)	Jumo
Main Ball Valve	2"	Blocked Flue Switch	HUBA
Manual Pilot Valve	1/4" Honeywell B528	Air Switch	HUBA
Solenoid Valve w/Reg	CV100	Blower Motor	American Fan 3 HP - FLA 8
Ignition Control	Honeywell RM7895C	Relief Valve - MB	1-1/2" x 2" set @ 50 psi
Operating Control	HeatNet™	Relief Valve - MW	3/4" x 1" set @ 125 psi
		Flow Switch	ITT FS8W

## RECOVERY CAPACITY

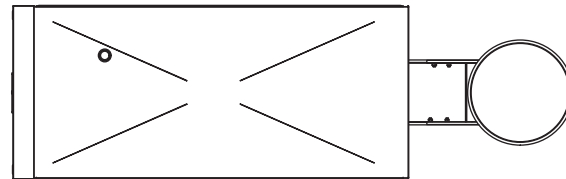
40°F	22°C	60°F	33°C	80°F	44°C	100°F	56°C	120°F	67°C	140°F	78°C
9,002	34,077	6,001	22,718	4,501	17,038	3,601	13,631	3,001	11,359	2,572	9,736

## ASME

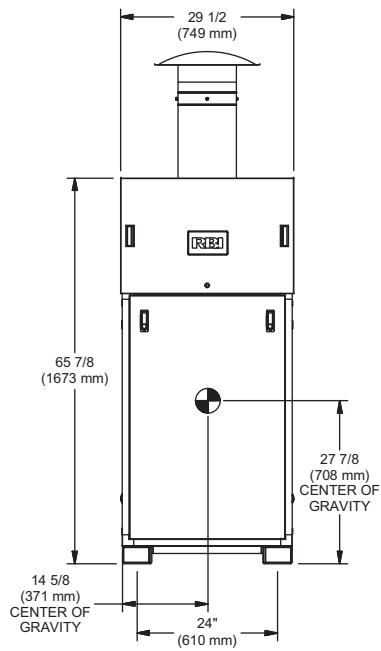
ASME Sect IV Htg Surface	377.0 Sq Ft / 35.02 Sq M	Design Data	Max. 160 psig & 250°F
<b>Water Volume</b>	13.4 gal / 50.72 l (liters)		

REP FIRM	_____	<b>FUTERA XLF 3500</b>
SUBMITTED BY	_____	
JOB NAME	_____	
ARCHITECT	_____	
ENGINEER	_____	
CONTRACTOR	_____	<b>RBI</b> ® A Division of Mestek, Inc. Westfield, MA 01085 (413) 568-9571
DATE	_____	

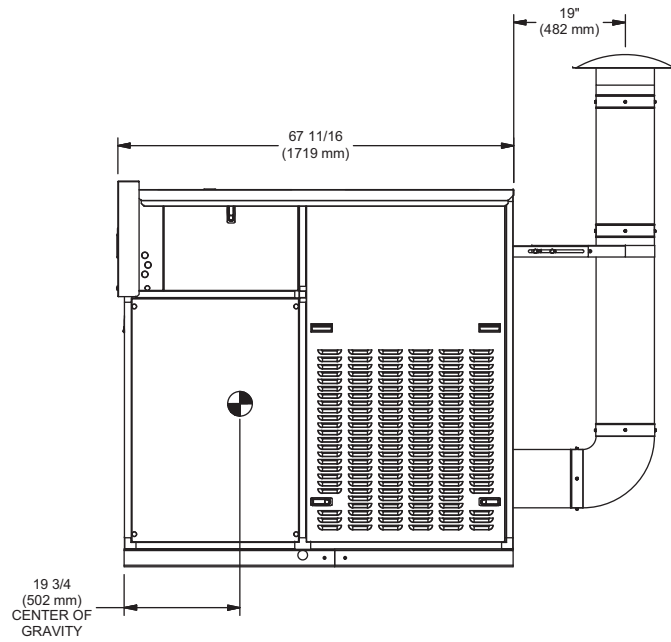
# OUTDOOR UNIT



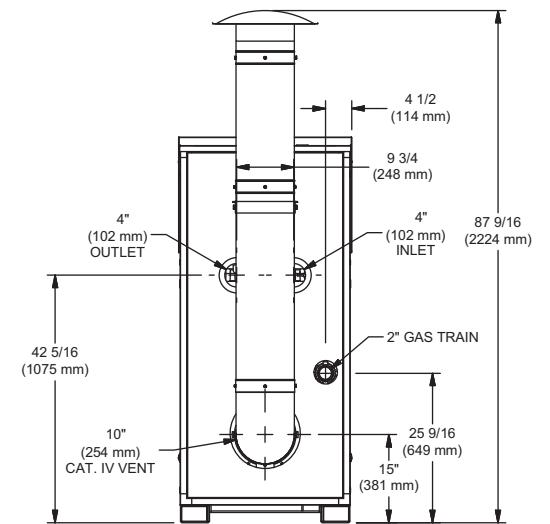
TOP VIEW



FRONT VIEW



SIDE VIEW



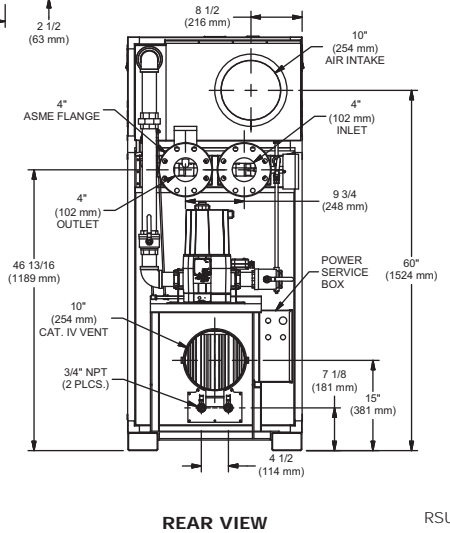
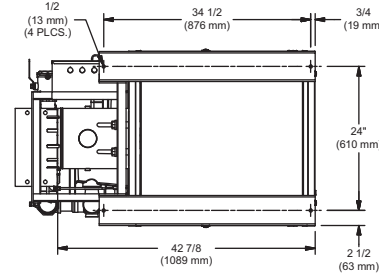
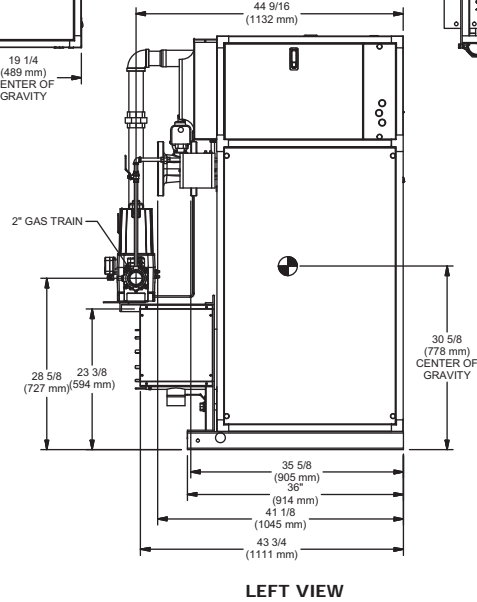
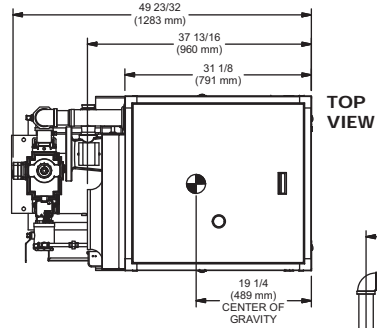
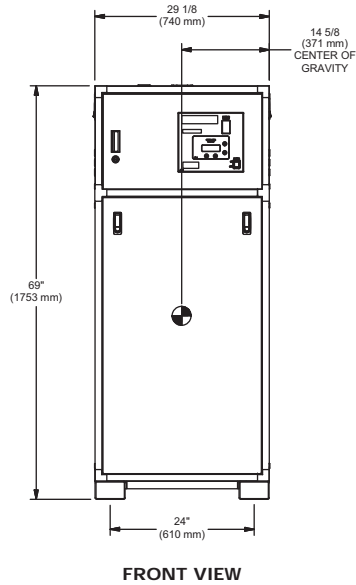
BACK VIEW

NOTE: Dimensions are approximate and should not be used to "rough-in" equipment.

\* Add circulator amps.

\*\*For incoming gas pressures lower than 3.5" WC natural, consult factory.

# INDOOR UNIT



RSUB 86 REV. F

## AGA CERTIFIED RATINGS & CAPACITIES

Fuel Type	Natural	Boiler FLA	17* @ 230V NEC
Input BTU/hr.	4,000,000 / 1,172 kW	Min. Gas Pressure Required	3.5" WC**
Output BTU/hr.	3,432,000 / 1,006 kW	Max. Gas Pressure Allowed	14" WC
<b>Electrical Requirements</b>	(L1, L2, NEU, GND) 208-240 VAC/1 ph/60 hz	Operating Weight	1,287 lbs. / 584 kgs

## TEMPERATURE RISE / PRESSURE DROP

25°F / 13.9°C		30°F / 16.7°C		35°F / 19.4°C							
Flow Rate	Pressure Drop	Flow Rate	Pressure Drop	Flow Rate	Pressure Drop						
GPM	L/s	Ft	kPa	GPM	L/s	Ft	kPa	GPM	L/s	Ft	kPa
278.4*	17.6	17.30	51.0	232.0	14.6	12.00	35.4	198.9	12.5	10.48	30.9

\*Flow exceeds recommended maximum use a greater temperature rise or consult manufacturer. Cupronickel heat exchanger should be considered.

## BOILER TRIM & CONTROLS

Main Gas Valve Body	Dungs MBC 4000	High Limit (Manual Reset)	Jumo
Firing Valve	Honeywell B200T1066 2"	High Limit (Auto Reset)	Jumo
Main Ball Valve	2"	Blocked Flue Switch	HUBA
Manual Pilot Valve	1/4" Honeywell B528	Air Switch	HUBA
Solenoid Valve w/Reg	CV100	Blower Motor	American Fan 3 HP - FLA 8
Ignition Control	Honeywell RM7895C	Relief Valve - MB	1-1/2" x 2" set @ 50 psi
Operating Control	HeatNet™	Relief Valve - MW	1" x 1" set @ 125 psi
		Flow Switch	ITT FS8W

## RECOVERY CAPACITY

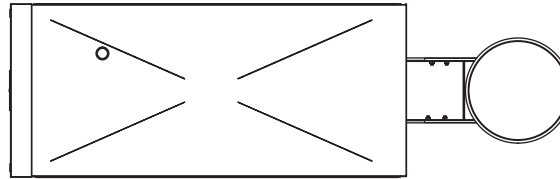
40°F	22°C	60°F	33°C	80°F	44°C	100°F	56°C	120°F	67°C	140°F	78°C
10,300	38,990	6,867	25,993	5,150	19,495	4,120	15,596	3,433	12,997	2,943	11,140

## ASME

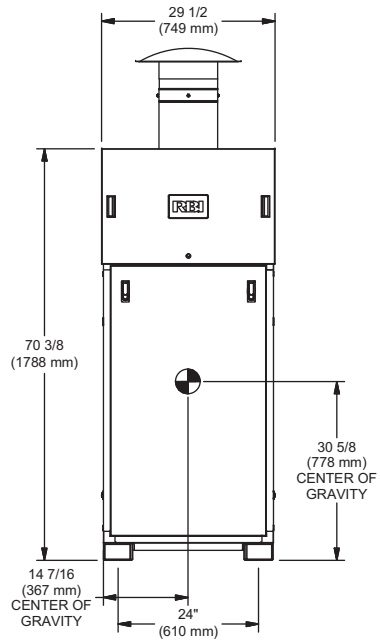
ASME Sect IV Htg Surface	435.0 Sq Ft / 40.41 Sq M	Design Data	Max. 160 psig & 250°F
<b>Water Volume</b>	14.0 gal / 53.00 l (liters)		

REP FIRM	_____	<b>FUTERA XLF 4000</b>
SUBMITTED BY	_____	
JOB NAME	_____	
ARCHITECT	_____	
ENGINEER	_____	
CONTRACTOR	_____	<b>RBI</b> ® A Division of Mestek, Inc. Westfield, MA 01085 (413) 568-9571
DATE	_____	

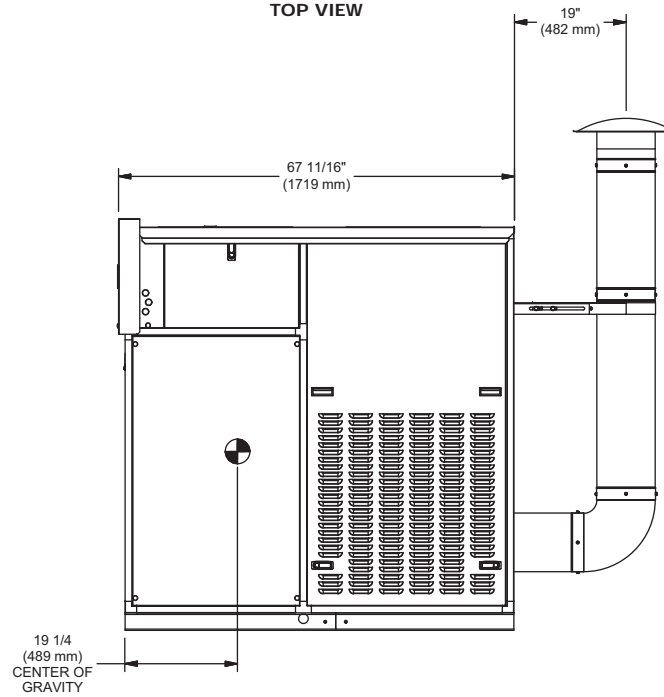
# OUTDOOR UNIT



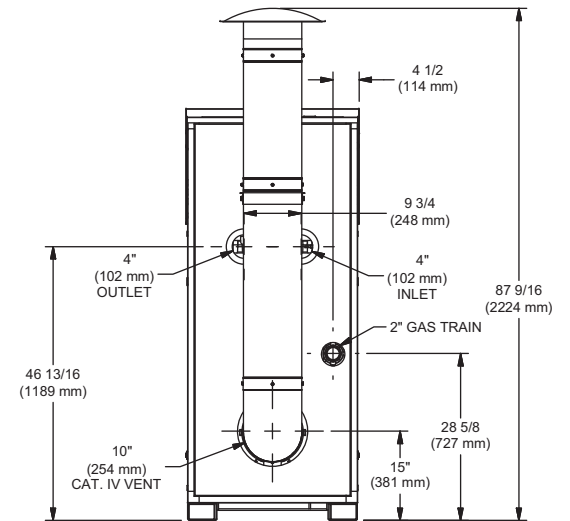
TOP VIEW



FRONT VIEW



SIDE VIEW



BACK VIEW