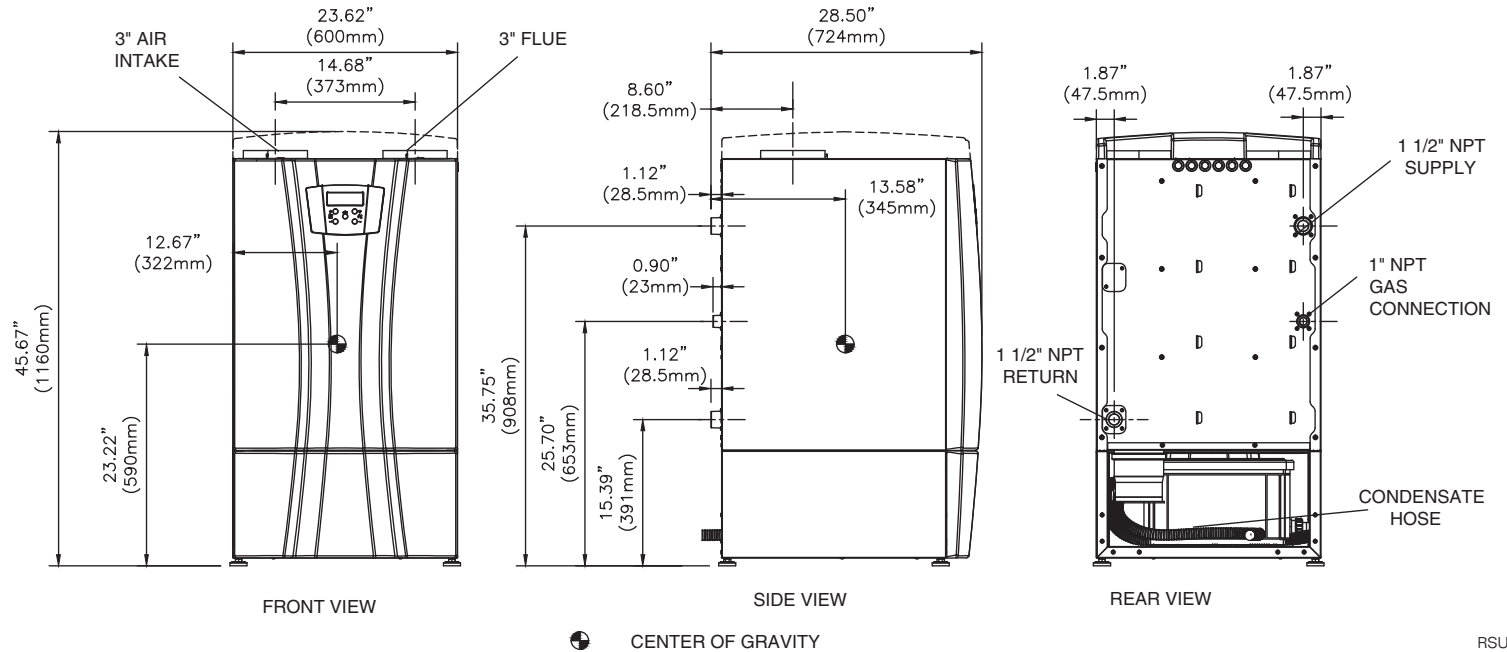


NOTE: Dimensions are approximate and should not be used to "rough-in" equipment.

* Add circulator amps.

** For incoming gas pressures lower than 3" W.C. natural or propane, consult factory.



RSUB-191

A.G.A. CERTIFIED RATINGS & CAPACITIES

Fuel Type	Natural/Propane Gas	Boiler FLA	.92 A
Input BTU/hr.	200,000 / 59 kW	Min. Gas Pressure Required	3" W.C.
Output BTU/hr.	183,600 / 54 kW	Max. Gas Pressure Allowed	13" W.C.
Electrical Requirements	120VAC/ 1 ph/ 60 hz	Operating Weight	234 lbs. / 106 kg.

TEMPERATURE RISE / PRESSURE DROP

25°F / 13.9°C		30°F / 16.7°C				35°F / 19.4°C					
Flow Rate		Pressure Drop		Flow Rate		Pressure Drop		Flow Rate		Pressure Drop	
GPM	L/s	Ft	kPa	GPM	L/s	Ft	kPa	GPM	L/s	Ft	kPa
14.6	.9	16.0	47.1	12.2	.8	11.0	32.4	10.4	.7	8.5	25.0

BOILER TRIM & CONTROLS

Main Gas Valve	Sit 848 Sigma	Air Switch	HUBA
Ignition Control	Argus	Blower Motor	EBM
Operating Control	Argus	Relief Valve - IW	3/4" x 3/4" @ 125 psi
High Limit	J2D-AOVJ	Relief Valve - IB	3/4" x 3/4" @ 50 psi

RECOVERY CAPACITY

40°F	22°C	60°F	33°C	80°F	44°C	100°F	56°C	120°F	67°C	140°F	78°C
551	2086	367	1391	276	1043	220	834	184	695	157	596

A.S.M.E.

ASME Sect IV Htg Surface	4.80 Sq. Ft. / .45 Sq. M.	Design Data	Max. 160 psig & 210°F
Water Volume	1.7 gal / 6.43 l (liters)		

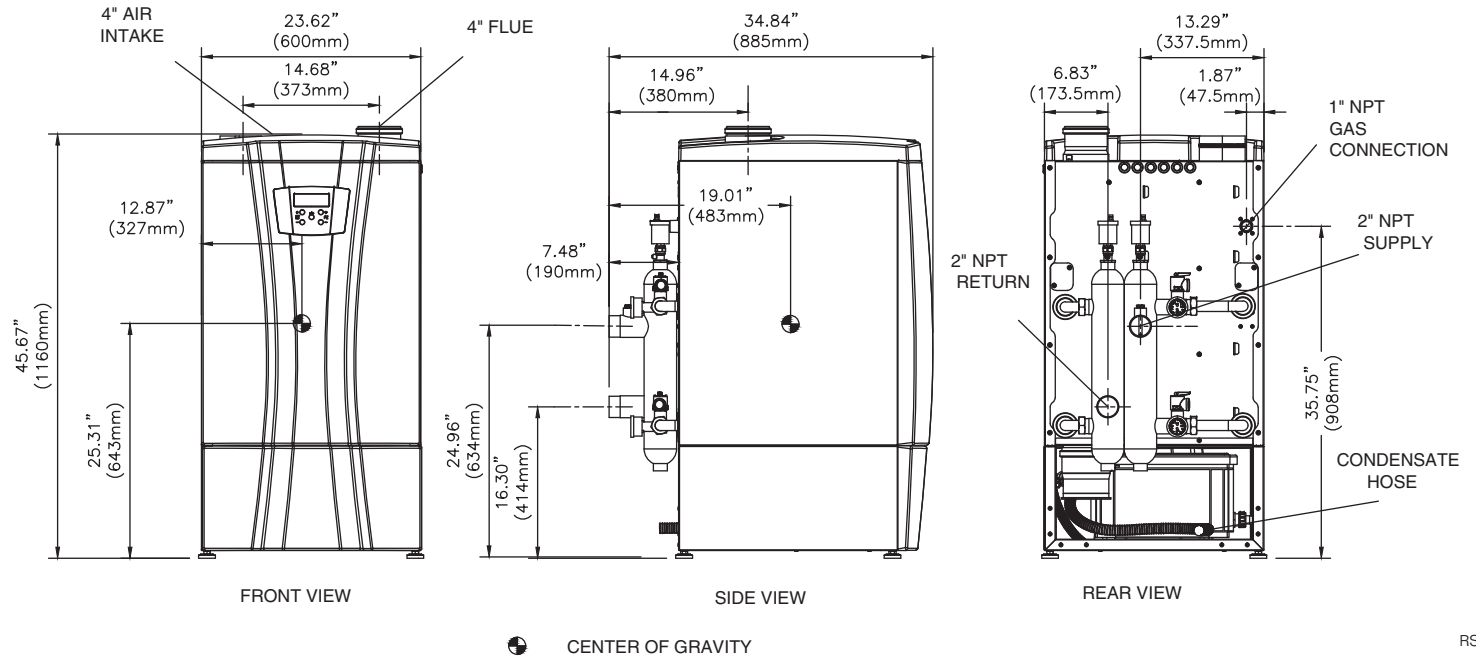
REP FIRM	_____	INFINITE ENERGY 2-199 Category IV Appliance (see Installation and Operation Manual for venting information)
SUBMITTED BY	_____	
JOB NAME	_____	
ARCHITECT	_____	
ENGINEER	_____	
CONTRACTOR	_____	 A Division of Mestek, Inc. Westfield, MA 01085 (413) 568-9571
DATE	_____	

SIE-199-2

NOTE: Dimensions are approximate and should not be used to "rough-in" equipment.

* Add circulator amps.

** For incoming gas pressures lower than 3" W.C. natural or propane, consult factory.



RSUB-192

A.G.A. CERTIFIED RATINGS & CAPACITIES

Fuel Type	Natural/Propane Gas	Boiler FLA	1.83 A
Input BTU/hr.	399,000 / 117 kW	Min. Gas Pressure Required	3" W.C.
Output BTU/hr.	375,858 / 110 kW	Max. Gas Pressure Allowed	13" W.C.
Electrical Requirements	120VAC/ 1 ph/ 60 hz	Operating Weight	309 lbs. / 140 kg.

TEMPERATURE RISE / PRESSURE DROP

		25°F / 13.9°C		30°F / 16.7°C		35°F / 19.4°C	
		Flow Rate	Pressure Drop	Flow Rate	Pressure Drop	Flow Rate	Pressure Drop
GPM	L/s	Ft	kPa	GPM	L/s	Ft	kPa
30.1	1.9	20.0	58.9	25.1	1.6	14.5	42.7
21.5	1.4	10.5	30.9				

BOILER TRIM & CONTROLS

Main Gas Valve	Sit 848 Sigma	Air Switch	HUBA
Ignition Control	Argus	Blower Motor	EBM
Operating Control	Argus	Relief Valve - IW	3/4" x 3/4" @ 125 psi
High Limit	J2D-AOVJ	Relief Valve - IB	3/4" x 3/4" @ 50 psi

RECOVERY CAPACITY

40°F	22°C	60°F	33°C	80°F	44°C	100°F	56°C	120°F	67°C	140°F	78°C
1131	4274	754	2849	565	2137	452	1710	377	1425	323	1221

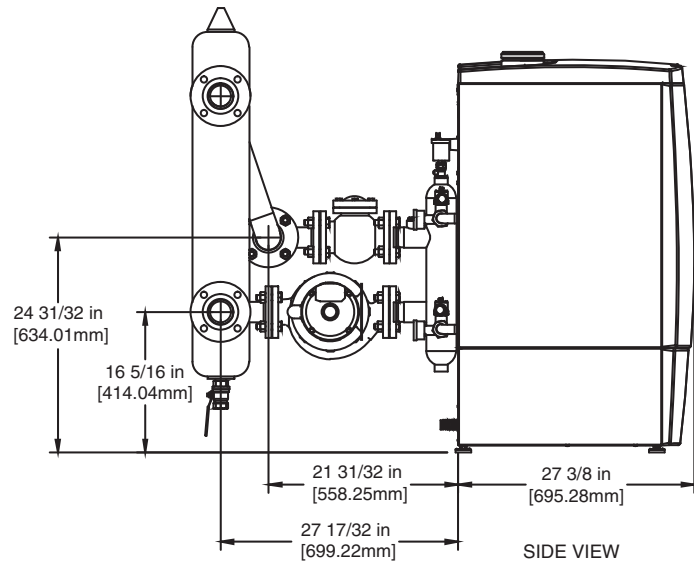
A.S.M.E.

ASME Sect IV Htg Surface	9.60 Sq. Ft. / .90 Sq. M.	Design Data	Max. 160 psig & 210°F
Water Volume	3.4 gal / 12.87 l (liters)		

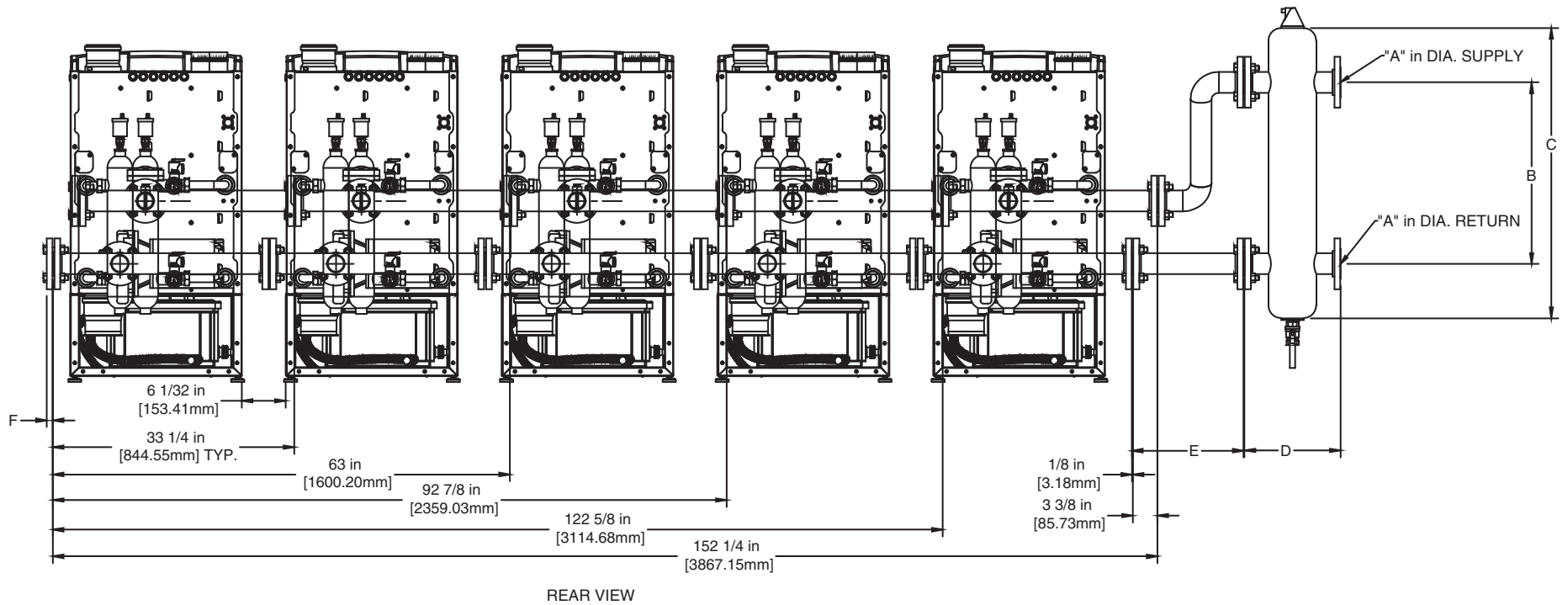
REP FIRM	_____	INFINITE ENERGY 2-399
SUBMITTED BY	_____	
JOB NAME	_____	Category IV Appliance
ARCHITECT	_____	(see Installation and Operation Manual for venting information)
ENGINEER	_____	RBI
CONTRACTOR	_____	
DATE	_____	

		A Division of Mestek, Inc. Westfield, MA 01085 (413) 568-9571

SIE-399-2



# OF BOILERS	A	B	C	D	E	F	OVERALL DIMENSION	GPM
1	2	19 1/4	35	13 3/4	14 1/4	3/4	58 5/8	30
2	2	19 1/4	35	13 3/4	14 1/4	3/4	88 3/8	60
3	2 1/2	25	40	13 1/4	15 1/4	7/8	118 3/4	90
4	2 1/2	25	40	13 1/4	15 1/4	7/8	148 1/2	120
5	2 1/2	25	40	13 1/4	15 1/4	7/8	178 1/8	150

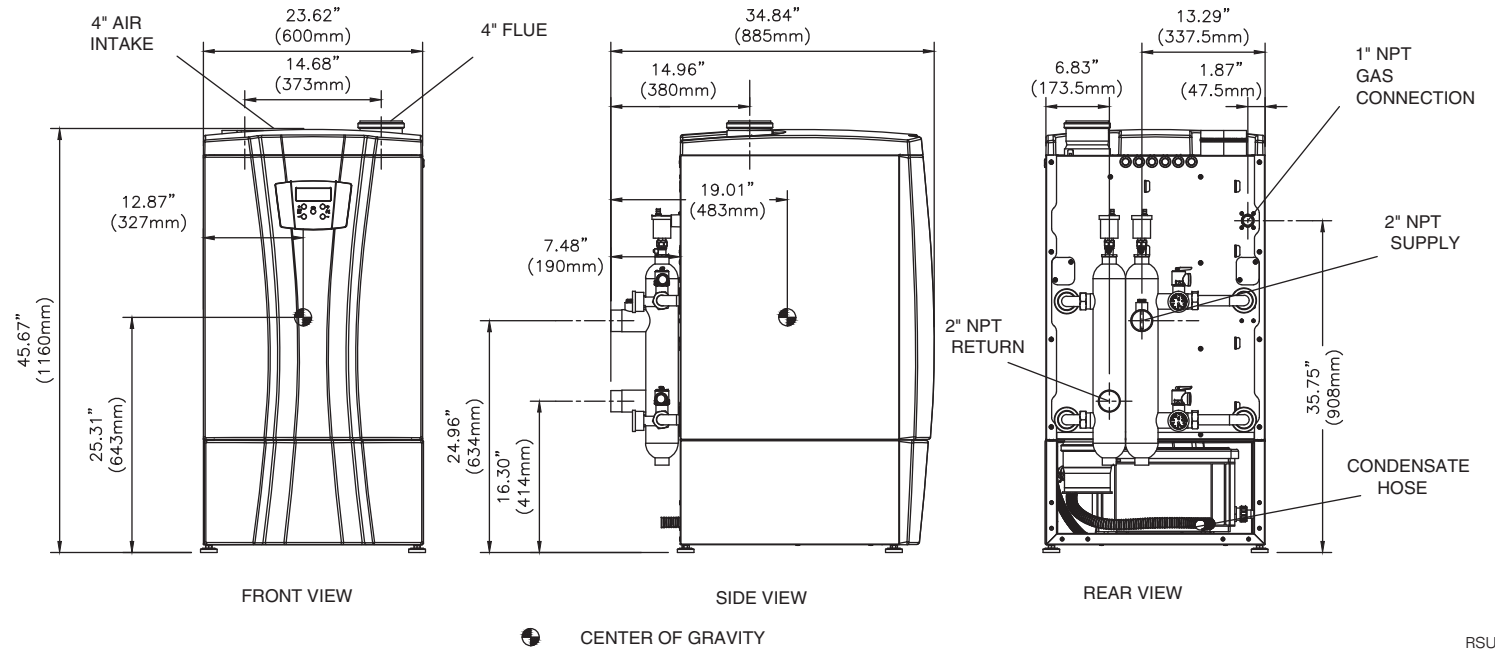


NOTE: DIMENSIONS ARE SUBJECT TO CHANGE WITHOUT NOTICE

NOTE: Dimensions are approximate and should not be used to "rough-in" equipment.

* Add circulator amps.

** For incoming gas pressures lower than 3" W.C. natural or propane, consult factory.



RSUB-193

A.G.A. CERTIFIED RATINGS & CAPACITIES

Fuel Type	Natural/Propane Gas	Boiler FLA	2.50 A
Input BTU/hr.	500,000 / 147 kW	Min. Gas Pressure Required	3" W.C.
Output BTU/hr.	472,000 / 138 kW	Max. Gas Pressure Allowed	13" W.C.
Electrical Requirements	120VAC/ 1 ph/ 60 hz	Operating Weight	320 lbs. / 145 kg.

TEMPERATURE RISE / PRESSURE DROP

25°F / 13.9°C		30°F / 16.7°C				35°F / 19.4°C					
Flow Rate		Pressure Drop		Flow Rate		Pressure Drop		Flow Rate		Pressure Drop	
GPM	L/s	Ft	kPa	GPM	L/s	Ft	kPa	GPM	L/s	Ft	kPa
37.8	2.4	37.0	109.0	31.5	1.9	26.0	76.6	27.0	1.7	20.0	58.9

BOILER TRIM & CONTROLS

Main Gas Valve	Sit 848 Sigma	Air Switch	HUBA
Ignition Control	Argus	Blower Motor	EBM
Operating Control	Argus	Relief Valve - IW	3/4" x 3/4" @ 125 psi
High Limit	J2D-AOVJ	Relief Valve - IB	3/4" x 3/4" @ 50 psi

RECOVERY CAPACITY

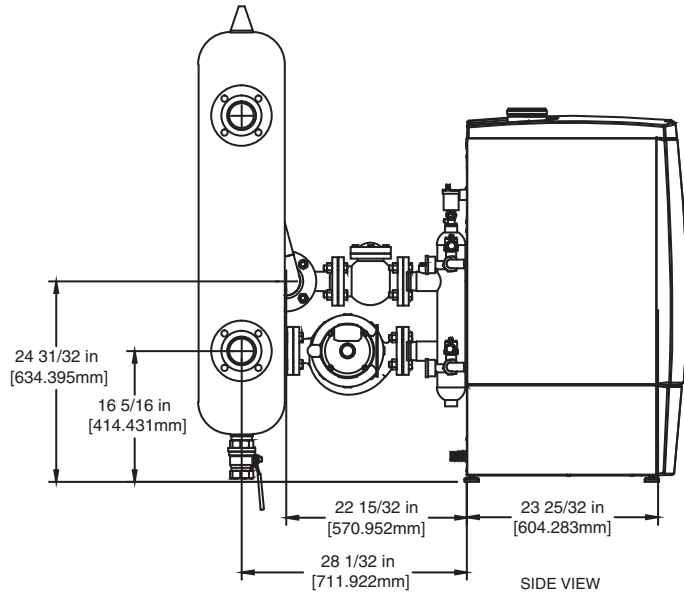
40°F	22°C	60°F	33°C	80°F	44°C	100°F	56°C	120°F	67°C	140°F	78°C
1420	5368	947	3578	710	2684	568	2147	473	1789	406	1534

A.S.M.E.

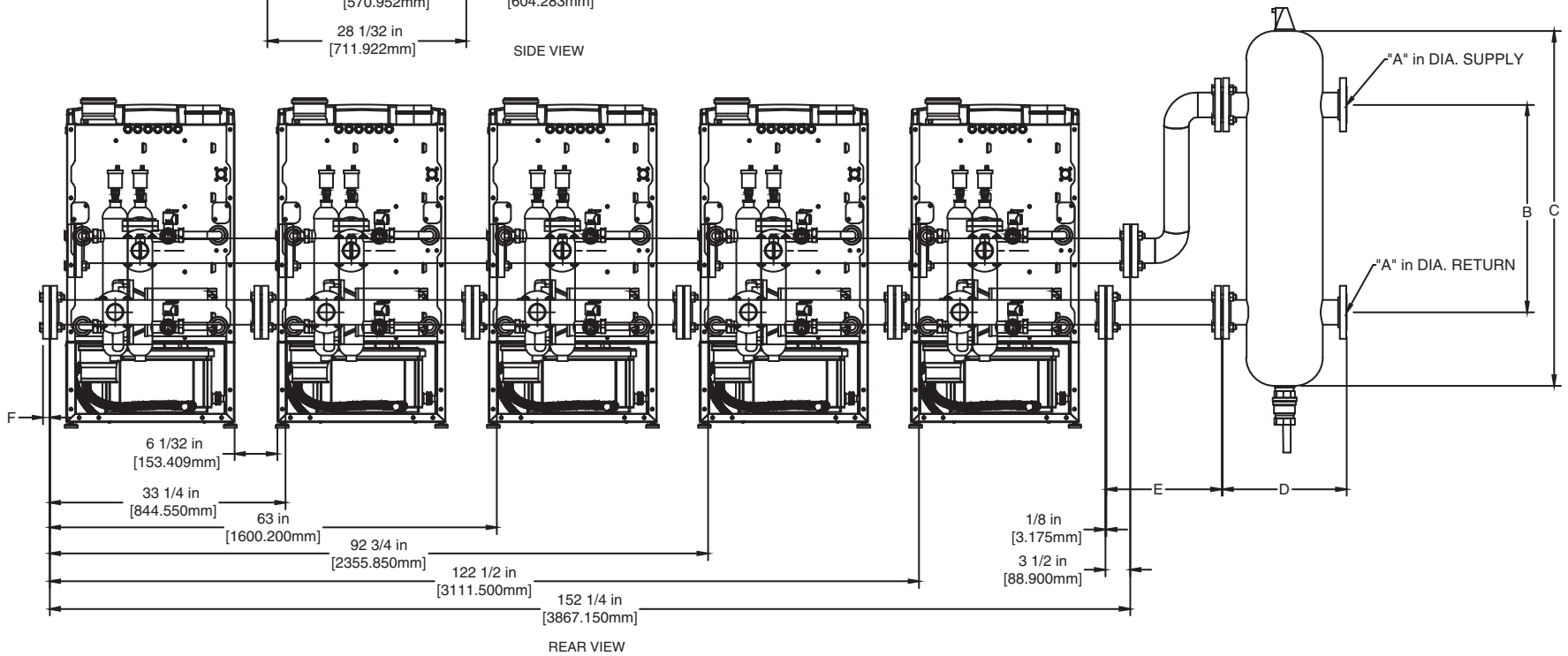
ASME Sect IV Htg Surface	12.00 Sq. Ft. / 1.125 Sq. M.	Design Data	Max. 160 psig & 210°F
Water Volume	4.0 gal / 15.41 l (liters)		

REP FIRM	_____	INFINITE ENERGY 2-500
SUBMITTED BY	_____	
JOB NAME	_____	Category IV Appliance
ARCHITECT	_____	(see Installation and Operation Manual for venting information)
ENGINEER	_____	RBI
CONTRACTOR	_____	
DATE	_____	
		A Division of Mestek, Inc. Westfield, MA 01085 (413) 568-9571

SIE-500-3



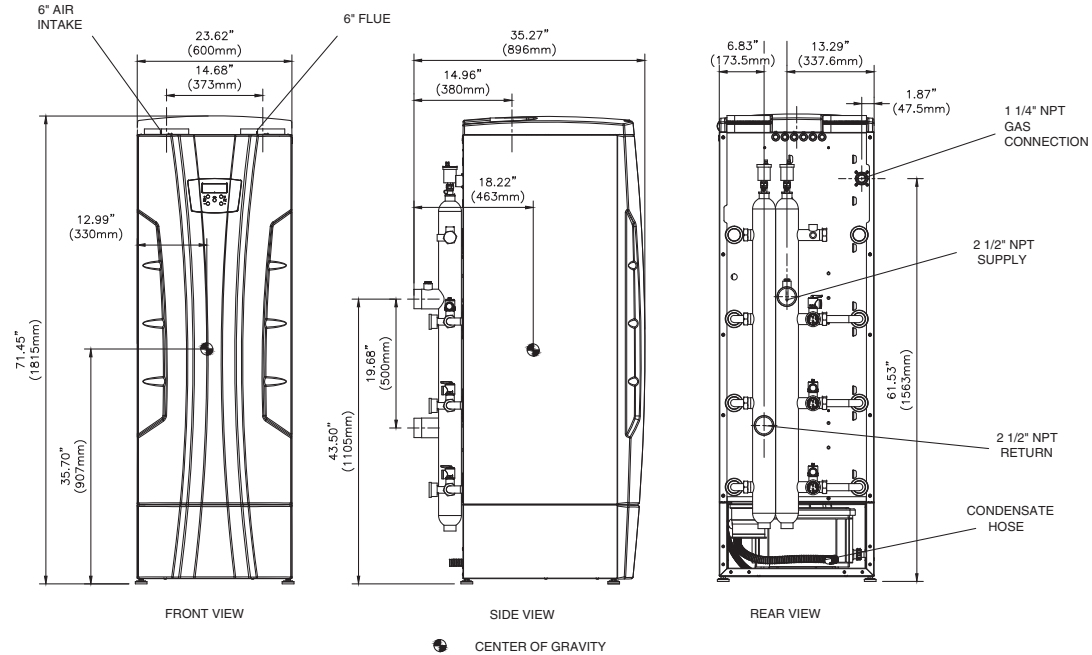
# OF BOILERS	A	B	C	D	E	F	OVERALL DIMENSION	GPM
1	2	19 1/4	35	13 3/4	14 1/4	3/4	58 5/8	32
2	2	19 1/4	35	13 3/4	14 1/4	3/4	88 3/4	64
3	2 1/2	25	40	13 1/4	15 1/4	7/8	118 3/4	96
4	2 1/2	25	40	13 1/4	15 1/4	7/8	148 1/2	128
5	3	29 1/4	50	17 1/2	16 1/4	15/16	183 9/16	160



NOTE: DIMENSIONS ARE SUBJECT TO CHANGE WITHOUT NOTICE

NOTE: Dimensions are approximate and should not be used to "rough-in" equipment.

* Add circulator amps.
 ** For incoming gas pressures lower than 3" W.C. natural or propane, consult factory.



RSUB-194

A.G.A. CERTIFIED RATINGS & CAPACITIES

Fuel Type	Natural/Propane Gas	Boiler FLA	3.58 A
Input BTU/hr.	750,000 / 220 kW	Min. Gas Pressure Required	3" W.C.
Output BTU/hr.	711,000 / 208 kW	Max. Gas Pressure Allowed	13" W.C.
Electrical Requirements	120VAC/ 1 ph/ 60 hz	Operating Weight	540 lbs. / 245 kg.

TEMPERATURE RISE / PRESSURE DROP

25°F / 13.9°C		30°F / 16.7°C		35°F / 19.4°C							
Flow Rate	Pressure Drop	Flow Rate	Pressure Drop	Flow Rate	Pressure Drop						
GPM	L/s	Ft	kPa	GPM	L/s	Ft	kPa	GPM	L/s	Ft	kPa
56.9	3.6	43.0	126.7	47.4	2.9	30.5	89.9	40.6	2.6	24.0	70.7

BOILER TRIM & CONTROLS

Main Gas Valve	Sit 848 Sigma	Air Switch	HUBA
Ignition Control	Argus	Blower Motor	EBM
Operating Control	Argus	Relief Valve - IW	3/4" x 3/4" @ 125 psi
High Limit	J2D-AOVJ	Relief Valve - IB	3/4" x 3/4" @ 50 psi

RECOVERY CAPACITY

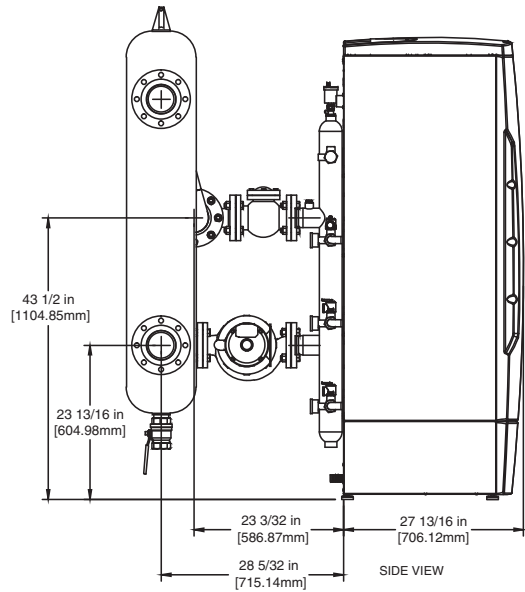
40°F	22°C	60°F	33°C	80°F	44°C	100°F	56°C	120°F	67°C	140°F	78°C
2139	8085	1426	5390	1069	4043	856	3234	713	2695	611	2310

A.S.M.E.

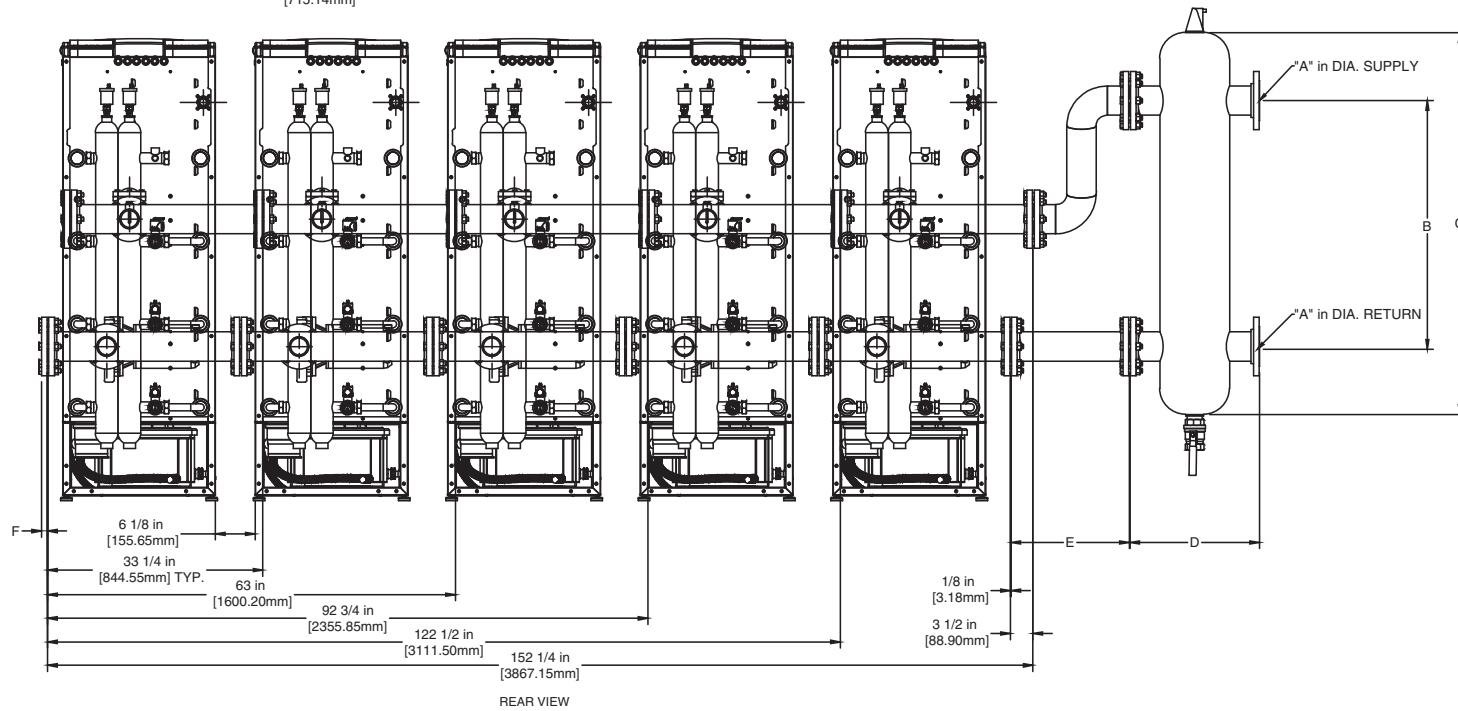
ASME Sect IV Htg Surface	18.00 Sq. Ft. / 1.68 Sq. M.	Design Data	Max. 160 psig & 210°F
Water Volume	7.0 gal / 26.50 l (liters)		

REP FIRM	_____	INFINITE ENERGY 2-750 Category IV Appliance (see Installation and Operation Manual for venting information)  A Division of Mestek, Inc. Westfield, MA 01085 (413) 568-9571
SUBMITTED BY	_____	
JOB NAME	_____	
ARCHITECT	_____	
ENGINEER	_____	
CONTRACTOR	_____	
DATE	_____	

SIE-750-2



# OF BOILERS	A	B	C	D	E	F	OVERALL DIMENSIONS	GPM
1	2 1/2	25	40	13 1/4	15 1/4	7/8	59 1/4	47
2	2 1/2	25	40	13 1/4	15 1/4	7/8	89	94
3	3	29 1/4	50	17 1/2	16 1/4	15/16	124 1/16	141
4	3	29 1/4	50	17 1/2	16 1/4	15/16	153 13/16	188
5	4	38	59	20	18 1/4	15/16	188 1/16	235

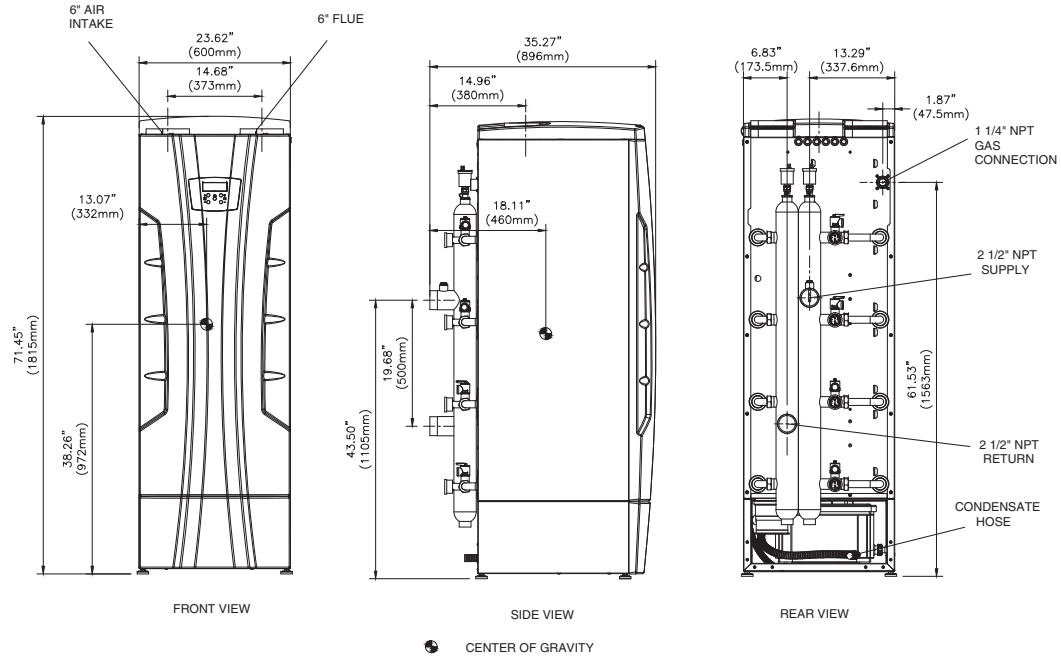


NOTE: DIMENSIONS ARE SUBJECT TO CHANGE WITHOUT NOTICE

NOTE: Dimensions are approximate and should not be used to "rough-in" equipment.

* Add circulator amps.

** For incoming gas pressures lower than 3" W.C. natural or propane, consult factory.



RSUB-195

A.G.A. CERTIFIED RATINGS & CAPACITIES

Fuel Type	Natural/Propane Gas	Boiler FLA	4.93 A
Input BTU/hr.	999,000 / 293 kW	Min. Gas Pressure Required	3" W.C.
Output BTU/hr.	952,000 / 279 kW	Max. Gas Pressure Allowed	13" W.C.
Electrical Requirements	120VAC/ 1 ph/ 60 hz	Operating Weight	595 lbs. / 270 kg.

TEMPERATURE RISE / PRESSURE DROP

25°F / 13.9°C		30°F / 16.7°C				35°F / 19.4°C					
Flow Rate		Pressure Drop		Flow Rate		Pressure Drop		Flow Rate		Pressure Drop	
GPM	L/s	Ft	kPa	GPM	L/s	Ft	kPa	GPM	L/s	Ft	kPa
76.2	4.8	41.0	120.8	63.5	4.0	27.0	79.5	54.4	3.4	20.5	60.4

BOILER TRIM & CONTROLS

Main Gas Valve	Sit 848 Sigma	Air Switch	HUBA
Ignition Control	Argus	Blower Motor	EBM
Operating Control	Argus	Relief Valve - IW	3/4" x 3/4" @ 125 psi
High Limit	J2D-AOVJ	Relief Valve - IB	3/4" x 3/4" @ 50 psi

RECOVERY CAPACITY

40°F	22°C	60°F	33°C	80°F	44°C	100°F	56°C	120°F	67°C	140°F	78°C
2864	10826	1909	7217	1432	5413	1146	4330	955	3609	818	3093

A.S.M.E.

ASME Sect IV Htg Surface	18.00 Sq. Ft. / 1.68 Sq. M.	Design Data	Max. 160 psig & 210°F
Water Volume	9.0 gal / 34.07 l (liters)		

REP FIRM _____

SUBMITTED BY _____

JOB NAME _____

ARCHITECT _____

ENGINEER _____

CONTRACTOR _____

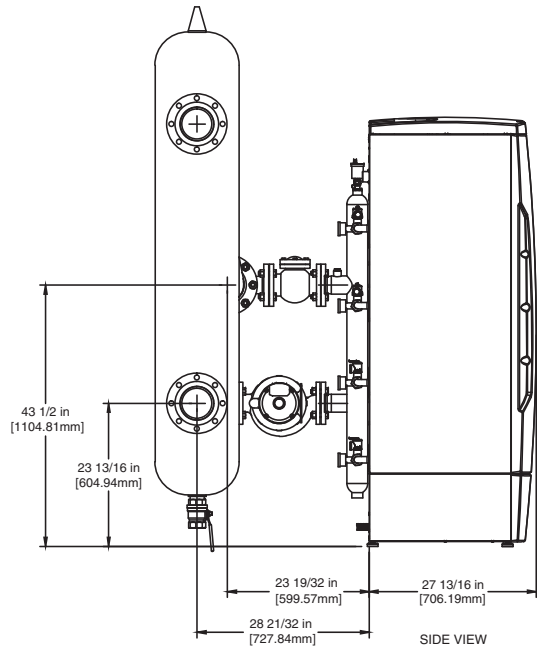
DATE _____

INFINITE ENERGY 2-1000

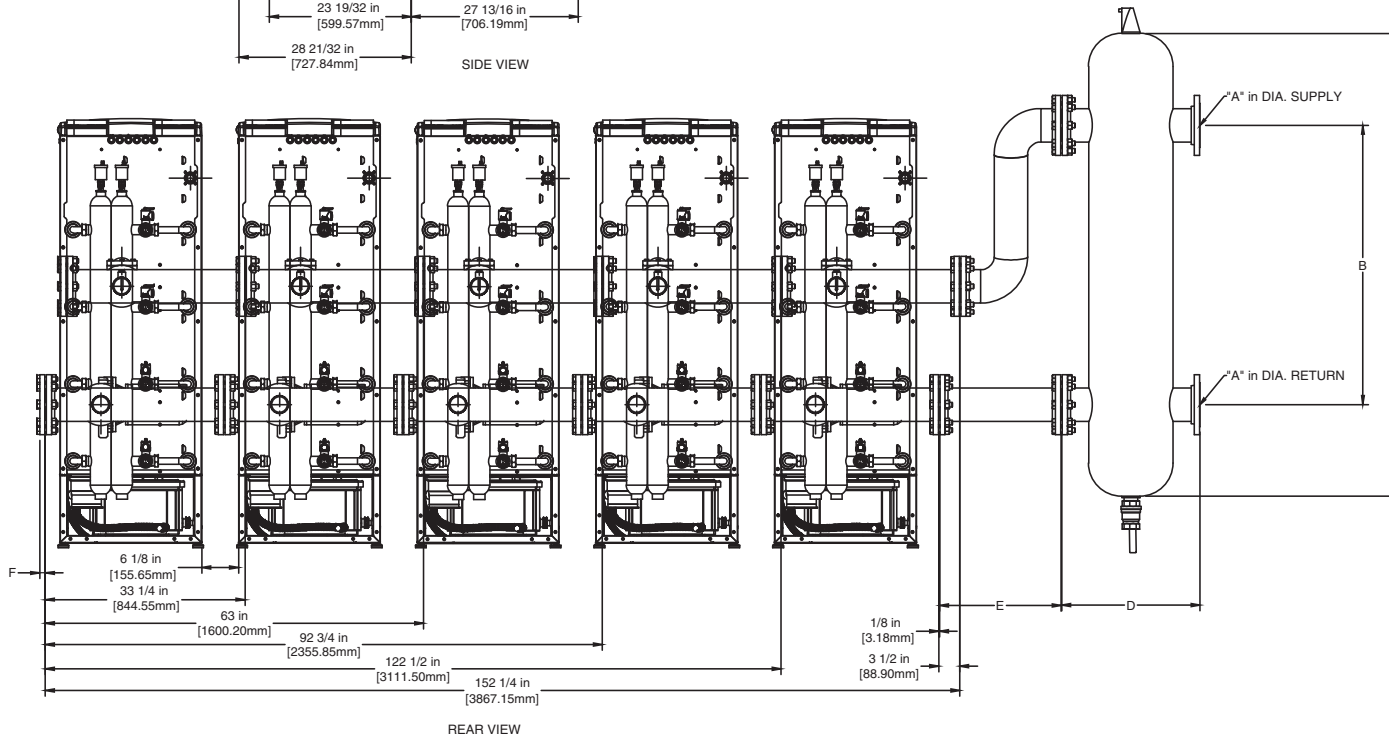
Category IV Appliance
(see Installation and Operation Manual for venting information)

RBI A Division of Mestek, Inc.
Westfield, MA 01085
(413) 568-9571

SIE-1000-3



# OF BOILERS	A	B	C	D	E	F	OVERALL DIMENSIONS	GPM
1	2 1/2	25	40	13 1/4	15 1/4	7/8	59 1/4	63
2	2 1/2	25	40	13 1/4	15 1/4	7/8	89	126
3	3	29 1/4	50	17 1/2	16 1/4	15/16	124 1/16	189
4	4	38	59	20	18 1/4	15/16	159 5/16	252
5	5	46 1/2	77	23	20 1/4	15/16	193 1/16	315



NOTE: DIMENSIONS ARE SUBJECT TO CHANGE WITHOUT NOTICE