

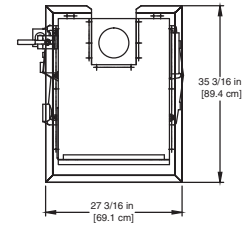
**CODE OPTIONS**

<b>CSD-1</b>	UTC Lockout/Reset Control Manual Reset LWCO
<b>Kentucky</b> (Water Htr Only)	200°F Maximum Operating Control and High Limit

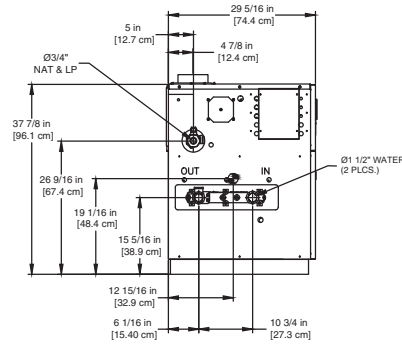
**NOTE:** Dimensions are approximate and should not be used to "rough-in" equipment.

\* Add circulator amps.

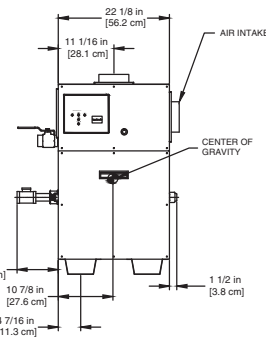
\*\*For incoming gas pressures lower than 6" WC natural or 11" WC propane, consult factory.



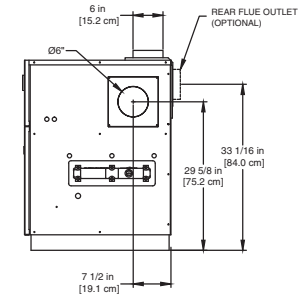
OUTDOOR TOP PANEL



LEFT SIDE



FRONT



RIGHT SIDE

RSUB-14-E

**AGA CERTIFIED RATINGS & CAPACITIES**

<b>Fuel Type</b>	Natural/Propane Gas	<b>Boiler FLA</b>	3.8*
<b>Input BTU/hr.</b>	225,000 / 66 kW	<b>Min. Gas Pressure Required</b>	6" WC**
<b>Output BTU/hr.</b>	186,750 / 55 kW	<b>Max. Gas Pressure Allowed</b>	14" WC
<b>Electrical Requirements</b>	120VAC/ 1 ph/ 60 hz/ 6 amp	<b>Operating Weight</b>	365 lbs. / 166 kg.

**TEMPERATURE RISE / PRESSURE DROP**

15°F / 8.3°C			
Flow Rate		Pressure Drop	
GPM	L/s	Ft	kPa
24.6	1.6	0.18	0.5

**BOILER TRIM & CONTROLS**

<b>Main Gas Valve</b>	Honeywell VR8305Q 3/4"	<b>Pilot Valve</b>	Honeywell VR8205Q
<b>Firing Valve</b>	Honeywell B200T1025 3/4"	<b>Air Switch</b>	Cleveland RSS-495
<b>Ignition Control</b>	UTC 1003-61A	<b>Blower Motor</b>	1/5 hp - FLA 3.0
<b>Operating Control (LB/LW)</b>	BTC-OR	<b>Relief Valve - LW</b>	3/4" x 3/4" set @ 125 psi
<b>High Limit (LB/LW)</b>	Jumo	<b>Relief Valve - LB</b>	3/4" x 3/4" set @ 50 psi
		<b>Flow Switch</b>	TACO IFS-1

**RECOVERY CAPACITY**

40°F	22°C	60°F	33°C	80°F	44°C	100°F	56°C	120°F	67°C	140°F	78°C
560	2122	374	1414	280	1061	224	849	187	707	160	606

**ASME**

<b>ASME Sect IV Htg Surface</b>	30.5 Sq. Ft. / 2.83 Sq. M.	<b>Design Data</b>	Max. 160 psig & 250°F
<b>Water Volume</b>	1.26 gal / 4.8 l (liters)		

**REP FIRM** \_\_\_\_\_  
**SUBMITTED BY** \_\_\_\_\_  
**JOB NAME** \_\_\_\_\_  
**ARCHITECT** \_\_\_\_\_  
**ENGINEER** \_\_\_\_\_  
**CONTRACTOR** \_\_\_\_\_  
**DATE** \_\_\_\_\_

# LCD 225

**Category I or Category III Appliance**

(See Installation and Operation Manual for venting information)

® A Division of Mestek, Inc.  
Westfield, MA 01085  
(413) 568-9571

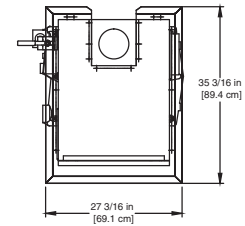
## CODE OPTIONS

<b>CSD-1</b>	UTC Lockout/Reset Control Manual Reset LWCO
<b>Kentucky</b> (Water Htr Only)	200°F Maximum Operating Control and High Limit

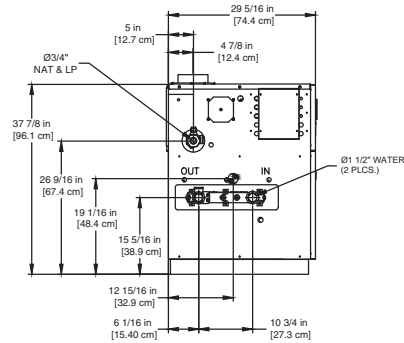
**NOTE:** Dimensions are approximate and should not be used to "rough-in" equipment.

\* Add circulator amps.

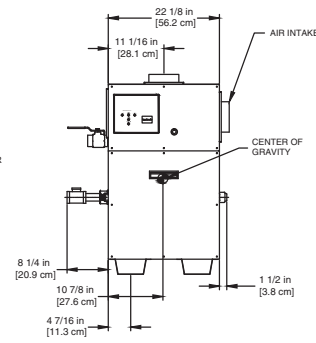
\*\*For incoming gas pressures lower than 6" WC natural or 11" WC propane, consult factory.



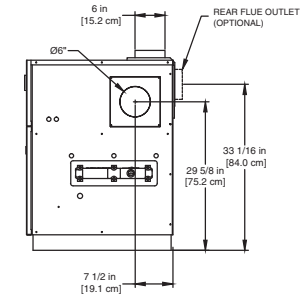
OUTDOOR TOP PANEL



LEFT SIDE



FRONT



RIGHT SIDE

RSUB-14-E

## AGA CERTIFIED RATINGS & CAPACITIES

<b>Fuel Type</b>	Natural/Propane Gas	<b>Boiler FLA</b>	3.8*
<b>Input BTU/hr.</b>	299,000 / 88 kW	<b>Min. Gas Pressure Required</b>	6" WC**
<b>Output BTU/hr.</b>	245,180 / 72 kW	<b>Max. Gas Pressure Allowed</b>	14" WC
<b>Electrical Requirements</b>	120VAC/ 1 ph/ 60 hz/ 6 amp	<b>Operating Weight</b>	385 lbs. / 175 kg.

## TEMPERATURE RISE / PRESSURE DROP

15°F / 8.3°C				20°F / 11.1°C			
Flow Rate		Pressure Drop		Flow Rate		Pressure Drop	
GPM	L/s	Ft	kPa	GPM	L/s	Ft	kPa
32.8	2.1	0.31	0.9	24.6	1.6	0.18	0.5

## BOILER TRIM & CONTROLS

<b>Main Gas Valve</b>	Honeywell VR8305Q 3/4"	<b>Pilot Valve</b>	Honeywell VR8205Q
<b>Firing Valve</b>	Honeywell B200T1025 3/4"	<b>Air Switch</b>	Cleveland RSS-495
<b>Ignition Control</b>	UTC 1003-61A	<b>Blower Motor</b>	1/5 hp - FLA 3.0
<b>Operating Control (LB/LW)</b>	BTC-OR	<b>Relief Valve - LW</b>	3/4" x 3/4" set @ 125 psi
<b>High Limit (LB/LW)</b>	Jumo	<b>Relief Valve - LB</b>	3/4" x 3/4" set @ 50 psi
		<b>Flow Switch</b>	TACO IFS-1

## RECOVERY CAPACITY

40°F	22°C	60°F	33°C	80°F	44°C	100°F	56°C	120°F	67°C	140°F	78°C
736	2785	491	1857	368	1393	294	1114	245	928	210	796

## ASME

<b>ASME Sect IV Htg Surface</b>	30.5 Sq. Ft. / 2.83 Sq. M.	<b>Design Data</b>	Max. 160 psig & 250°F
<b>Water Volume</b>	1.26 gal / 4.8 l (liters)		

**REP FIRM** \_\_\_\_\_  
**SUBMITTED BY** \_\_\_\_\_  
**JOB NAME** \_\_\_\_\_  
**ARCHITECT** \_\_\_\_\_  
**ENGINEER** \_\_\_\_\_  
**CONTRACTOR** \_\_\_\_\_  
**DATE** \_\_\_\_\_

# LCD 300

**Category I or Category III Appliance**  
(See Installation and Operation Manual for venting information)



A Division of Mestek, Inc.  
Westfield, MA 01085  
(413) 568-9571

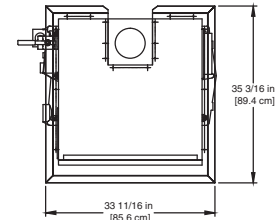
## CODE OPTIONS

<b>CSD-1</b>	UTC Lockout/Reset Control Manual Reset LWCO
<b>Kentucky</b> (Water Htr Only)	200°F Maximum Operating Control and High Limit

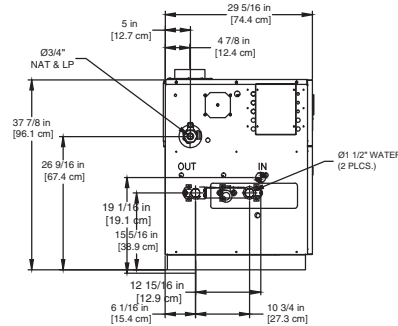
**NOTE:** Dimensions are approximate and should not be used to "rough-in" equipment.

\* Add circulator amps.

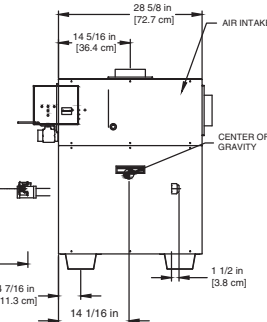
\*\*For incoming gas pressures lower than 6" WC natural or 11" WC propane, consult factory.



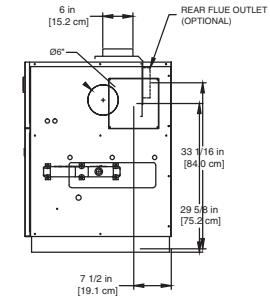
OUTDOOR TOP PANEL



LEFT SIDE



FRONT



RIGHT SIDE

RSUB-15-E

## AGA CERTIFIED RATINGS & CAPACITIES

<b>Fuel Type</b>	Natural/Propane Gas	<b>Boiler FLA</b>	3.8*
<b>Input BTU/hr.</b>	399,000 / 117 kW	<b>Min. Gas Pressure Required</b>	6" WC**
<b>Output BTU/hr.</b>	327,180 / 96 kW	<b>Max. Gas Pressure Allowed</b>	14" WC
<b>Electrical Requirements</b>	120VAC/ 1 ph/ 60 Hz/ 6 amp	<b>Operating Weight</b>	402 lbs. / 182 kg.

## TEMPERATURE RISE / PRESSURE DROP

15°F / 8.3°C				20°F / 11.1°C				25°F / 13.9°C			
Flow Rate		Pressure Drop		Flow Rate		Pressure Drop		Flow Rate		Pressure Drop	
GPM	L/s	Ft	kPa	GPM	L/s	Ft	kPa	GPM	L/s	Ft	kPa
43.7	2.8	0.70	2.1	32.8	2.1	0.41	1.2	26.2	1.7	0.27	0.8

## BOILER TRIM & CONTROLS

<b>Main Gas Valve</b>	Honeywell VR8305Q 3/4"	<b>Pilot Valve</b>	Honeywell VR8205Q
<b>Firing Valve</b>	Honeywell B200T1025 3/4"	<b>Air Switch</b>	Cleveland RSS-495
<b>Ignition Control</b>	UTC 1003-61A	<b>Blower Motor</b>	1/5 hp - FLA 3.0
<b>Operating Control (LB/LW)</b>	Jumo	<b>Relief Valve - LW</b>	3/4" x 3/4" set @ 125 psi
<b>High Limit (LB/LW)</b>	Jumo	<b>Relief Valve - LB</b>	3/4" x 3/4" set @ 50 psi
		<b>Flow Switch</b>	TACO IFS-1

## RECOVERY CAPACITY

40°F	22°C	60°F	33°C	80°F	44°C	100°F	56°C	120°F	67°C	140°F	78°C
982	3717	655	2478	491	1859	393	1487	327	1239	281	1062

## ASME

<b>ASME Sect IV Htg Surface</b>	40.1 Sq. Ft. / 3.73 Sq. M.	<b>Design Data</b>	Max. 160 psig & 250°F
<b>Water Volume</b>	1.39 gal / 5.3 l (liters)		

REP FIRM \_\_\_\_\_  
 SUBMITTED BY \_\_\_\_\_  
 JOB NAME \_\_\_\_\_  
 ARCHITECT \_\_\_\_\_  
 ENGINEER \_\_\_\_\_  
 CONTRACTOR \_\_\_\_\_  
 DATE \_\_\_\_\_

# LCD 400

**Category I or Category III Appliance**  
 (See Installation and Operation Manual for venting information)



A Division of Mestek, Inc.  
 Westfield, MA 01085  
 (413) 568-9571

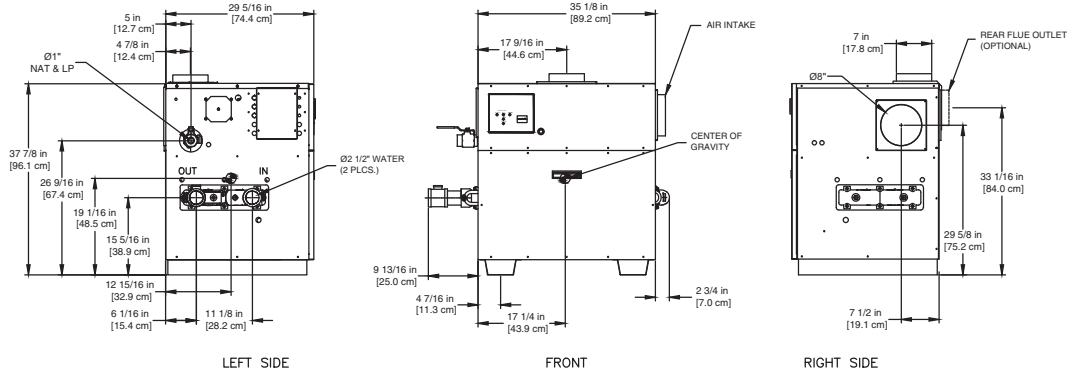
### CODE OPTIONS

<b>CSD-1</b>	UTC Lockout/Reset Control Manual Reset LWCO
<b>Kentucky</b> (Water Htr Only)	200°F Maximum Operating Control and High Limit

**NOTE:** Dimensions are approximate and should not be used to "rough-in" equipment.

\* Add circulator amps.

\*\*For incoming gas pressures lower than 6" WC natural or 11" WC propane, consult factory.



RSUB-16-E

### AGA CERTIFIED RATINGS & CAPACITIES

<b>Fuel Type</b>	Natural/Propane Gas	<b>Boiler FLA</b>	3.8*
<b>Input BTU/hr.</b>	600,000 / 176 kW	<b>Min. Gas Pressure Required</b>	6" WC**
<b>Output BTU/hr.</b>	492,000 / 144 kW	<b>Max. Gas Pressure Allowed</b>	14" WC
<b>Electrical Requirements</b>	120VAC/ 1 ph/ 60 hz/ 6 amp	<b>Operating Weight</b>	523 lbs. / 237 kg.

### TEMPERATURE RISE / PRESSURE DROP

15°F / 8.3°C		20°F / 11.1°C		25°F / 13.9°C		30°F / 16.7°C									
Flow Rate	Pressure Drop	Flow Rate	Pressure Drop	Flow Rate	Pressure Drop	Flow Rate	Pressure Drop								
GPM	L/s	Ft	kPa	GPM	L/s	Ft	kPa	GPM	L/s	Ft	kPa				
65.6	4.1	1.84	5.4	49.2	3.1	1.08	3.2	39.4	2.5	0.71	2.1	32.8	2.1	0.51	1.5

### BOILER TRIM & CONTROLS

<b>Main Gas Valve</b>	Honeywell V8944B 1"	<b>Pilot Valve</b>	Honeywell VR8205Q
<b>Firing Valve</b>	Honeywell B200T1033 1"	<b>Air Switch</b>	Cleveland RSS-495
<b>Safety Valve</b>	Honeywell V48A 1"	<b>Blower Motor</b>	1/4 hp - FLA 3.0
<b>Ignition Control</b>	UTC 1003-61A	<b>Relief Valve - LW</b>	3/4" x 3/4" set @ 125 psi
<b>Operating Control (LB/LW)</b>	Jumo	<b>Relief Valve - LB</b>	3/4" x 3/4" set @ 50 psi
<b>High Limit (LB/LW)</b>	Jumo	<b>Flow Switch</b>	TACO IFS-1

### RECOVERY CAPACITY

40°F	22°C	60°F	33°C	80°F	44°C	100°F	56°C	120°F	67°C	140°F	78°C
1477	5590	984	3726	738	2795	591	2236	492	1863	422	1597

### ASME

<b>ASME Sect IV Htg Surface</b>	51.3 Sq. Ft. / 4.77 Sq. M.	<b>Design Data</b>	Max. 160 psig & 250°F
<b>Water Volume</b>	1.58 gal / 5.9 l (liters)		

**REP FIRM** \_\_\_\_\_  
**SUBMITTED BY** \_\_\_\_\_  
**JOB NAME** \_\_\_\_\_  
**ARCHITECT** \_\_\_\_\_  
**ENGINEER** \_\_\_\_\_  
**CONTRACTOR** \_\_\_\_\_  
**DATE** \_\_\_\_\_

# LCD 600

**Category I or Category III Appliance**  
(See Installation and Operation Manual for venting information)

**RBI**® A Division of Mestek, Inc.  
Westfield, MA 01085  
(413) 568-9571

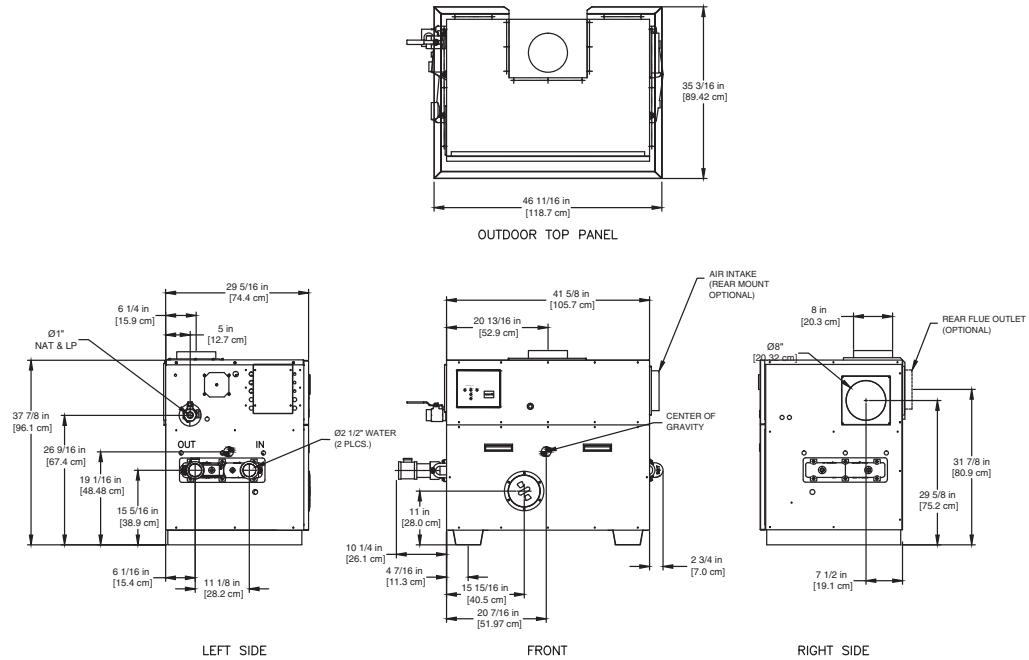
## CODE OPTIONS

<b>CSD-1</b>	UTC Lockout/Reset Control Manual Reset LWCO
<b>Kentucky</b> (Water Htr Only)	200°F Maximum Operating Control and High Limit

**NOTE:** Dimensions are approximate and should not be used to "rough-in" equipment.

\* Add circulator amps.

\*\*For incoming gas pressures lower than 6" WC natural or 11" WC propane, consult factory.



RSUB-17-E

## AGA CERTIFIED RATINGS & CAPACITIES

<b>Fuel Type</b>	Natural/Propane Gas	<b>Boiler FLA</b>	5.9*
<b>Input BTU/hr.</b>	750,000 / 220 kW	<b>Min. Gas Pressure Required</b>	6" WC**
<b>Output BTU/hr.</b>	615,000 / 180 kW	<b>Max. Gas Pressure Allowed</b>	14" WC
<b>Electrical Requirements</b>	120VAC/ 1 ph/ 60 hz/ 8 amp	<b>Operating Weight</b>	554 lbs. / 251 kg.

## TEMPERATURE RISE / PRESSURE DROP

20°F / 11.1°C				25°F / 13.9°C				30°F / 16.7°C				35°F / 19.4°C			
Flow Rate		Pressure Drop		Flow Rate		Pressure Drop		Flow Rate		Pressure Drop		Flow Rate		Pressure Drop	
GPM	L/s	Ft	kPa	GPM	L/s	Ft	kPa	GPM	L/s	Ft	kPa	GPM	L/s	Ft	kPa
61.5	3.9	1.95	5.7	49.2	3.1	1.29	3.8	41.0	2.6	0.92	2.7	35.1	2.2	0.69	2.0

## BOILER TRIM & CONTROLS

<b>Main Gas Valve</b>	Honeywell V8944B 1"	<b>Pilot Valve</b>	Honeywell VR8205Q
<b>Firing Valve</b>	Honeywell B200T1033 1"	<b>Air Switch</b>	Cleveland RSS-495
<b>Safety Valve</b>	Honeywell V48A 1"	<b>Blower Motor</b>	1/4 hp - FLA 5.1
<b>Ignition Control</b>	UTC 1003-61A	<b>Relief Valve - LW</b>	3/4" x 3/4" set @ 125 psi
<b>Operating Control (LB/LW)</b>	Jumo	<b>Relief Valve - LB</b>	3/4" x 3/4" set @ 50 psi
<b>High Limit (LB/LW)</b>	Jumo	<b>Flow Switch</b>	ITT FS4-3

## RECOVERY CAPACITY

40°F	22°C	60°F	33°C	80°F	44°C	100°F	56°C	120°F	67°C	140°F	78°C
1846	6987	1230	4658	923	3493	738	2795	615	2329	527	1996

## ASME

<b>ASME Sect IV Htg Surface</b>	61.7 Sq. Ft. / 5.73 Sq. M.	<b>Design Data</b>	Max. 160 psig & 250°F
<b>Water Volume</b>	1.71 gal / 6.5 l (liters)		

REP FIRM \_\_\_\_\_  
 SUBMITTED BY \_\_\_\_\_  
 JOB NAME \_\_\_\_\_  
 ARCHITECT \_\_\_\_\_  
 ENGINEER \_\_\_\_\_  
 CONTRACTOR \_\_\_\_\_  
 DATE \_\_\_\_\_

# LCD 750

**Category I or Category III Appliance**  
 (See Installation and Operation Manual for venting information)



A Division of Mestek, Inc.  
 Westfield, MA 01085  
 (413) 568-9571

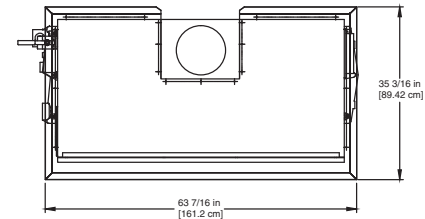
### CODE OPTIONS

<b>CSD-1</b>	UTC Lockout/Reset Control Manual Reset LWCO
<b>Kentucky</b> (Water Htr Only)	200°F Maximum Operating Control and High Limit

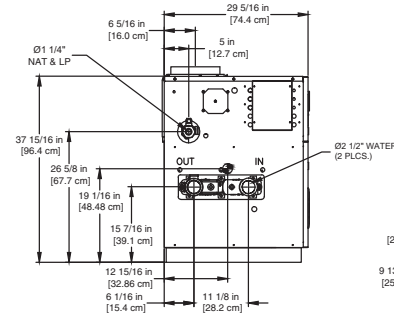
**NOTE:** Dimensions are approximate and should not be used to "rough-in" equipment.

\* Add circulator amps.

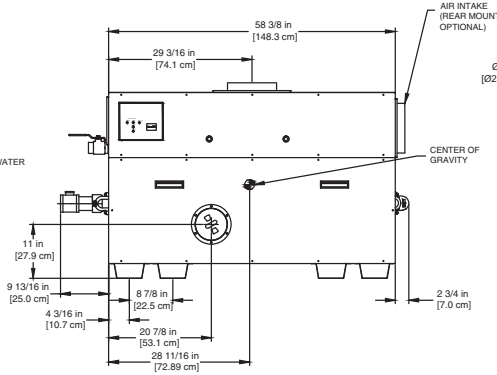
\*\*For incoming gas pressures lower than 6" WC natural or 11" WC propane, consult factory.



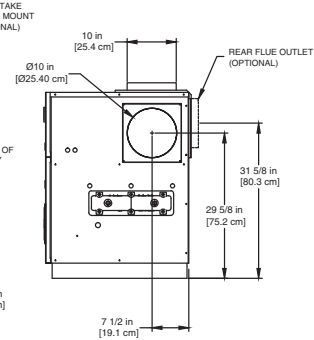
OUTDOOR TOP PANEL



LEFT SIDE



FRONT



RIGHT SIDE

RSUB-19-E

### AGA CERTIFIED RATINGS & CAPACITIES

<b>Fuel Type</b>	Natural/Propane Gas	<b>Boiler FLA</b>	11.0*
<b>Input BTU/hr.</b>	1,050,000 / 308 kW	<b>Min. Gas Pressure Required</b>	6" WC**
<b>Output BTU/hr.</b>	861,000 / 252 kW	<b>Max. Gas Pressure Allowed</b>	14" WC
<b>Electrical Requirements</b>	120VAC/ 1 ph/ 60 hz/ 14 amp	<b>Operating Weight</b>	752 lbs. / 341 kg.

### TEMPERATURE RISE / PRESSURE DROP

20°F / 11.1°C		25°F / 13.9°C		30°F / 16.7°C		35°F / 19.4°C									
Flow Rate	Pressure Drop	Flow Rate	Pressure Drop	Flow Rate	Pressure Drop	Flow Rate	Pressure Drop								
GPM	L/s	Ft	kPa	GPM	L/s	Ft	kPa	GPM	L/s	Ft	kPa				
86.1	5.4	5.16	15.2	68.9	4.3	3.41	10.1	57.4	3.6	2.44	7.2	49.2	3.1	1.83	5.4

### BOILER TRIM & CONTROLS

<b>Main Gas Valve</b>	Honeywell V8944B 1-1/4"	<b>Pilot Valve</b>	Honeywell VR8205Q
<b>Firing Valve</b>	Honeywell B200T1041 1-1/4"	<b>Air Switch</b>	Cleveland RSS-495
<b>Safety Valve</b>	Honeywell V48A 1-1/4"	<b>Blower Motor</b>	1/4 hp - FLA 10.2
<b>Ignition Control</b>	UTC 1003-61A	<b>Relief Valve - LW</b>	3/4" x 3/4" set @ 125 psi
<b>Operating Control (LB/LW)</b>	Jumo	<b>Relief Valve - LB</b>	3/4" x 3/4" set @ 50 psi
<b>High Limit (LB/LW)</b>	Jumo	<b>Flow Switch</b>	TACO IFS-1

### RECOVERY CAPACITY

40°F	22°C	60°F	33°C	80°F	44°C	100°F	56°C	120°F	67°C	140°F	78°C
2584	9782	1723	6521	1292	4891	1034	3913	861	3261	738	2795

### ASME

<b>ASME Sect IV Htg Surface</b>	88.1 Sq. Ft. / 8.18 Sq. M.	<b>Design Data</b>	Max. 160 psig & 250 °F
<b>Water Volume</b>	2.06 gal / 7.8 l (liters)		

**REP FIRM** \_\_\_\_\_  
**SUBMITTED BY** \_\_\_\_\_  
**JOB NAME** \_\_\_\_\_  
**ARCHITECT** \_\_\_\_\_  
**ENGINEER** \_\_\_\_\_  
**CONTRACTOR** \_\_\_\_\_  
**DATE** \_\_\_\_\_

# LCD 1050

**Category I or Category III Appliance**  
(See Installation and Operation Manual for venting information)



A Division of Mestek, Inc.  
Westfield, MA 01085  
(413) 568-9571

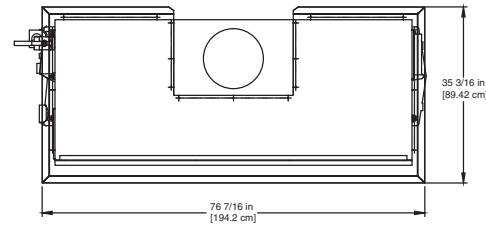
## CODE OPTIONS

<b>CSD-1</b>	UTC Lockout/Reset Control Manual Reset LWCO
<b>Kentucky</b> (Water Htr Only)	200°F Maximum Operating Control and High Limit

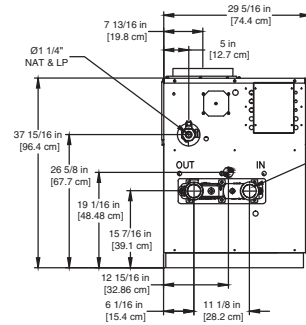
**NOTE:** Dimensions are approximate and should not be used to "rough-in" equipment.

\* Add circulator amps.

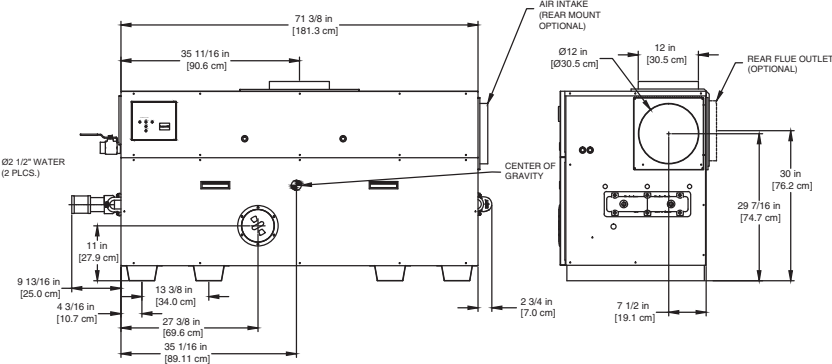
\*\*For incoming gas pressures lower than 6" WC natural or 11" WC propane, consult factory.



OUTDOOR TOP PANEL



LEFT SIDE



FRONT

RIGHT SIDE

RSUB-20-E

## AGA CERTIFIED RATINGS & CAPACITIES

<b>Fuel Type</b>	Natural/Propane Gas	<b>Boiler FLA</b>	11.0*
<b>Input BTU/hr.</b>	1,200,000 / 352 kW	<b>Min. Gas Pressure Required</b>	6" WC**
<b>Output BTU/hr.</b>	984,000 / 288 kW	<b>Max. Gas Pressure Allowed</b>	14" WC
<b>Electrical Requirements</b>	120VAC / 1 ph / 60 hz / 14 amp	<b>Operating Weight</b>	781 lbs. / 354 kg.

## TEMPERATURE RISE / PRESSURE DROP

20°F / 11.1°C		25°F / 13.9°C		30°F / 16.7°C		35°F / 19.4°C									
Flow Rate	Pressure Drop	Flow Rate	Pressure Drop	Flow Rate	Pressure Drop	Flow Rate	Pressure Drop								
GPM	L/s	Ft	kPa	GPM	L/s	Ft	kPa	GPM	L/s	Ft	kPa				
98.4*	6.2	8.14	24.0	78.7	5.0	5.38	15.9	65.6	4.1	3.84	11.3	56.2	3.5	2.89	8.5

\*Flow exceeds recommended maximum use a greater temperature rise or consult manufacturer. Cupro-Nickel heat exchanger should be considered.

## BOILER TRIM & CONTROLS

<b>Main Gas Valve</b>	Honeywell V8944B 1-1/4"	<b>Pilot Valve</b>	Honeywell VR8205Q
<b>Firing Valve</b>	Honeywell B200T1041 1-1/4"	<b>Air Switch</b>	Cleveland RSS-495
<b>Safety Valve</b>	Honeywell V48A 1-1/4"	<b>Blower Motor</b>	(2) 1/4 hp - FLA 10.2
<b>Ignition Control</b>	UTC 1003-61A	<b>Relief Valve - LW</b>	3/4" x 3/4" set @ 125 psi
<b>Operating Control (LB/LW)</b>	Jumo	<b>Relief Valve - LB</b>	1" x 1-1/4" set @ 50 psi
<b>High Limit (LB/LW)</b>	Jumo	<b>Flow Switch</b>	TACO IFS-1

## ASME

<b>ASME Sect IV Htg Surface</b>	109.7 Sq. Ft. / 10.19 Sq. M.	<b>Design Data</b>	Max. 160 psig & 250 °F
<b>Water Volume</b>	2.33 gal / 8.8 l (liters)		

## RECOVERY CAPACITY

40°F	22°C	60°F	33°C	80°F	44°C	100°F	56°C	120°F	67°C	140°F	78°C
2953	11179	1969	7453	1477	5590	1181	4472	984	3726	844	3194

REP FIRM \_\_\_\_\_  
 SUBMITTED BY \_\_\_\_\_  
 JOB NAME \_\_\_\_\_  
 ARCHITECT \_\_\_\_\_  
 ENGINEER \_\_\_\_\_  
 CONTRACTOR \_\_\_\_\_  
 DATE \_\_\_\_\_

# LCD 1200

**Category I or Category III Appliance**  
 (See Installation and Operation Manual for venting information)

**RBI**® A Division of Mestek, Inc.  
 Westfield, MA 01085  
 (413) 568-9571

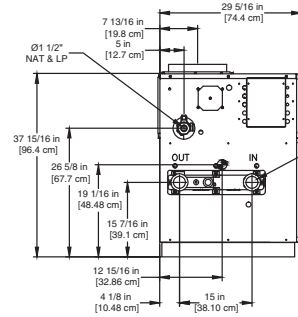
## CODE OPTIONS

<b>CSD-1</b>	UTC Lockout/Reset Control Manual Reset LWCO
<b>Kentucky</b> (Water Htr Only)	200°F Maximum Operating Control and High Limit

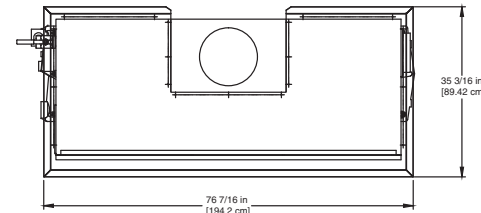
**NOTE:** Dimensions are approximate and should not be used to "rough-in" equipment.

\* Add circulator amps.

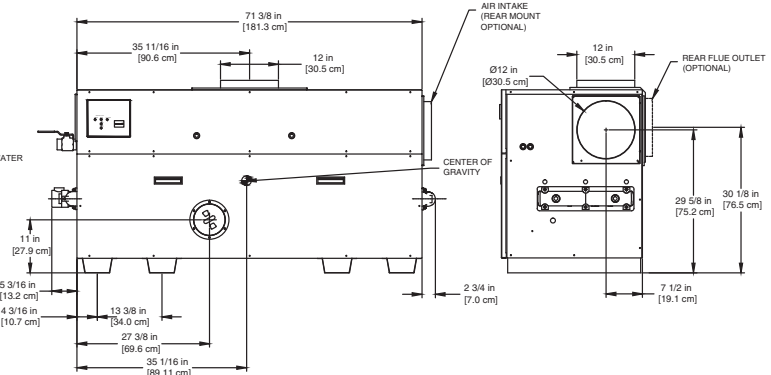
\*\*For incoming gas pressures lower than 6" WC natural or 11" WC propane, consult factory.



LEFT SIDE



OUTDOOR TOP PANEL



FRONT

RIGHT SIDE

RSUB-21-E

## AGA CERTIFIED RATINGS & CAPACITIES

<b>Fuel Type</b>	Natural/Propane Gas	<b>Boiler FLA</b>	11.0*
<b>Input BTU/hr.</b>	1,480,000 / 434 kW	<b>Min. Gas Pressure Required</b>	6" WC**
<b>Output BTU/hr.</b>	1,213,600 / 356 kW	<b>Max. Gas Pressure Allowed</b>	14" WC
<b>Electrical Requirements</b>	120VAC/ 1 ph/ 60 Hz/ 14 amp	<b>Operating Weight</b>	830 lbs. / 377 kg.

## TEMPERATURE RISE / PRESSURE DROP

20°F / 11.1°C		25°F / 13.9°C				30°F / 16.7°C				35°F / 19.4°C					
Flow Rate		Pressure Drop		Flow Rate		Pressure Drop		Flow Rate		Pressure Drop		Flow Rate		Pressure Drop	
GPM	L/s	Ft	kPa	GPM	L/s	Ft	kPa	GPM	L/s	Ft	kPa	GPM	L/s	Ft	kPa
121.4*	7.7	7.94	23.4	97.1	6.1	5.25	15.5	80.9	5.1	3.75	11.0	69.3	4.4	2.82	8.3

\*Flow exceeds recommended maximum use a greater temperature rise or consult manufacturer. Cupro-Nickel heat exchanger should be considered.

## BOILER TRIM & CONTROLS

<b>Main Gas Valve</b>	Honeywell V8944B 1-1/2"	<b>Pilot Valve</b>	Honeywell VR8205Q
<b>Firing Valve</b>	Honeywell B200T1058 1-1/2"	<b>Air Switch</b>	Cleveland RSS-495
<b>Safety Valve</b>	Honeywell V48A 1-1/2"	<b>Blower Motor</b>	(2) 1/4 hp - FLA 10.2
<b>Ignition Control</b>	UTC 1003-61A	<b>Relief Valve - LW</b>	3/4" x 3/4" set @ 125 psi
<b>Operating Control (LB/LW)</b>	Jumo	<b>Relief Valve - LB</b>	1" x 1-1/4" set @ 50 psi
<b>High Limit (LB/LW)</b>	Jumo	<b>Flow Switch</b>	TACO IFS-1

## ASME

<b>ASME Sect IV Htg Surface</b>	137 Sq. Ft. / 12.73 Sq. M.	<b>Design Data</b>	Max. 160 psig & 250°F
<b>Water Volume</b>	4.80 gal / 18.2 l (liters)		

## RECOVERY CAPACITY

40°F	22°C	60°F	33°C	80°F	44°C	100°F	56°C	120°F	67°C	140°F	78°C
3642	13787	2428	9192	1821	6894	1457	5515	1214	4596	1041	3939

REP FIRM \_\_\_\_\_  
 SUBMITTED BY \_\_\_\_\_  
 JOB NAME \_\_\_\_\_  
 ARCHITECT \_\_\_\_\_  
 ENGINEER \_\_\_\_\_  
 CONTRACTOR \_\_\_\_\_  
 DATE \_\_\_\_\_

# LCD 1480

**Category I or Category III Appliance**  
 (See Installation and Operation Manual for venting information)



® A Division of Mestek, Inc.  
 Westfield, MA 01085  
 (413) 568-9571



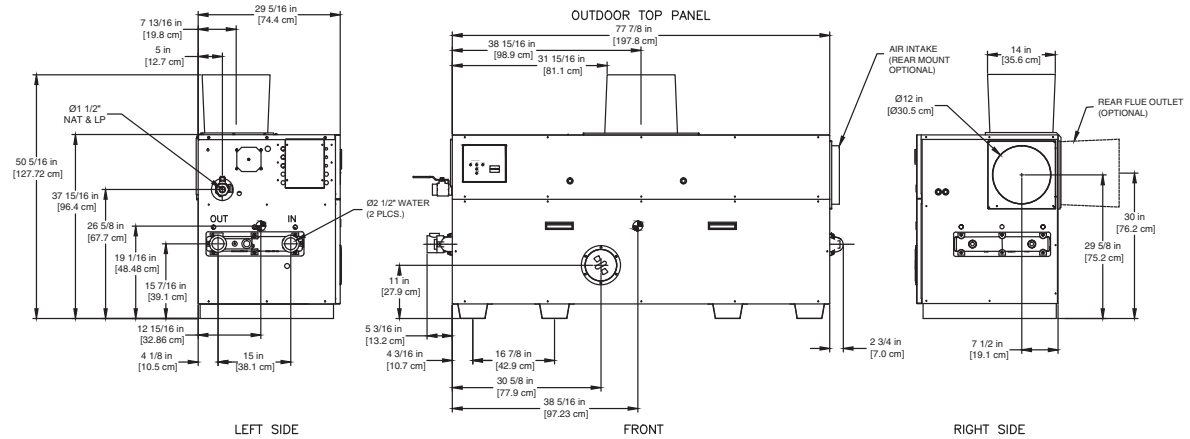
## CODE OPTIONS

<b>CSD-1</b>	UTC Lockout/Reset Control Manual Reset LWCO
<b>Kentucky</b> (Water Htr Only)	200°F Maximum Operating Control and High Limit

**NOTE:** Dimensions are approximate and should not be used to "rough-in" equipment.

\* Add circulator amps.

\*\*For incoming gas pressures lower than 6" WC natural or 11" WC propane, consult factory.



RSUB-22-F

## AGA CERTIFIED RATINGS & CAPACITIES

<b>Fuel Type</b>	Natural/Propane Gas	<b>Boiler FLA</b>	11.0*
<b>Input BTU/hr.</b>	1,650,000 / 483 kW	<b>Min. Gas Pressure Required</b>	6" WC**
<b>Output BTU/hr.</b>	1,353,000 / 396 kW	<b>Max. Gas Pressure Allowed</b>	14" WC
<b>Electrical Requirements</b>	120VAC/ 1 ph/ 60 hz/ 14 amp	<b>Operating Weight</b>	906 lbs. / 411 kg.

## TEMPERATURE RISE / PRESSURE DROP

25°F / 13.9°C				30°F / 16.7°C				35°F / 19.4°C			
Flow Rate		Pressure Drop		Flow Rate		Pressure Drop		Flow Rate		Pressure Drop	
GPM	L/s	Ft	kPa	GPM	L/s	Ft	kPa	GPM	L/s	Ft	kPa
108.2	6.8	7.02	20.7	90.2	5.7	5.01	14.8	77.3	4.9	3.77	11.1

## BOILER TRIM & CONTROLS

<b>Main Gas Valve</b>	Honeywell V8944B 1-1/2"	<b>Pilot Valve</b>	Honeywell VR8205Q
<b>Firing Valve</b>	Honeywell B200T1058 1-1/2"	<b>Air Switch</b>	Cleveland RSS-495
<b>Safety Valve</b>	Honeywell V48A 1-1/2"	<b>Blower Motor</b>	(2) 1/4 hp - FLA 10.2
<b>Ignition Control</b>	UTC 1003-61A	<b>Relief Valve - LW</b>	3/4" x 3/4" set @ 125 psi
<b>Operating Control (LB/LW)</b>	Jumo	<b>Relief Valve - LB</b>	1" x 1-1/4" set @ 50 psi
<b>High Limit (LB/LW)</b>	Jumo	<b>Flow Switch</b>	TACO IFS-1

## RECOVERY CAPACITY

40°F	22°C	60°F	33°C	80°F	44°C	100°F	56°C	120°F	67°C	140°F	78°C
4061	15371	2707	10247	2030	7686	1624	6148	1354	5124	1160	4392

## ASME

<b>ASME Sect IV Htg Surface</b>	149 Sq. Ft. / 13.84 Sq. M.	<b>Design Data</b>	Max. 160 psig & 250°F
<b>Water Volume</b>	4.92 gal / 18.6 l (liters)		

**REP FIRM** \_\_\_\_\_  
**SUBMITTED BY** \_\_\_\_\_  
**JOB NAME** \_\_\_\_\_  
**ARCHITECT** \_\_\_\_\_  
**ENGINEER** \_\_\_\_\_  
**CONTRACTOR** \_\_\_\_\_  
**DATE** \_\_\_\_\_

# LCD 1650

**Category I or Category III Appliance**  
(See Installation and Operation Manual for venting information)



A Division of Mestek, Inc.  
Westfield, MA 01085  
(413) 568-9571

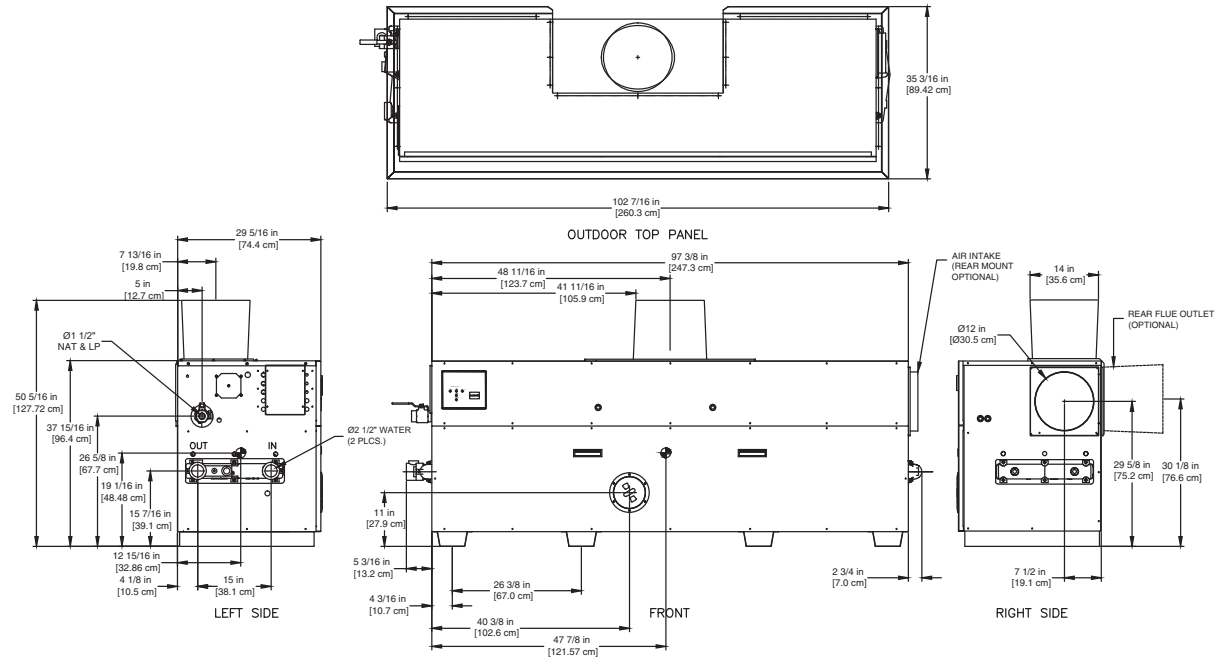
**CODE OPTIONS**

<b>CSD-1</b>	UTC Lockout/Reset Control Manual Reset LWCO
<b>Kentucky (Water Htr Only)</b>	200°F Maximum Operating Control and High Limit

**NOTE:** Dimensions are approximate and should not be used to "rough-in" equipment.

\* Add circulator amps.

\*\*For incoming gas pressures lower than 6" WC natural or 11" WC propane, consult factory.



RSUB-23-F

**AGA CERTIFIED RATINGS & CAPACITIES**

<b>Fuel Type</b>	Natural/Propane Gas	<b>Boiler FLA</b>	11.0*
<b>Input BTU/hr.</b>	1,970,000 / 577 kW	<b>Min. Gas Pressure Required</b>	6" WC**
<b>Output BTU/hr.</b>	1,615,400 / 473 kW	<b>Max. Gas Pressure Allowed</b>	14" WC
<b>Electrical Requirements</b>	120VAC/ 1 ph/ 60 hz/ 14 amp	<b>Operating Weight</b>	1073 lbs. / 487 kg.

**TEMPERATURE RISE / PRESSURE DROP**

30°F / 16.7°C				35°F / 19.4°C			
Flow Rate		Pressure Drop		Flow Rate		Pressure Drop	
GPM	L/s	Ft	kPa	GPM	L/s	Ft	kPa
107.7	6.8	8.75	25.8	92.3	5.8	6.58	19.4

**BOILER TRIM & CONTROLS**

<b>Main Gas Valve</b>	Honeywell V8944B 1-1/2"	<b>Pilot Valve</b>	Honeywell VR8205Q
<b>Firing Valve</b>	Honeywell B200T1058 1-1/2"	<b>Air Switch</b>	Cleveland RSS-495
<b>Safety Valve</b>	Honeywell V48A 1-1/2"	<b>Blower Motor</b>	(2) 1/4 hp - FLA 10.2
<b>Ignition Control</b>	UTC 1003-61A	<b>Relief Valve - LW</b>	3/4" x 3/4" set @ 125 psi
<b>Operating Control (LB/LW)</b>	Jumo	<b>Relief Valve - LB</b>	1" x 1-1/4" set @ 50 psi
<b>High Limit (LB/LW)</b>	Jumo	<b>Flow Switch</b>	TACO IFS-1

**RECOVERY CAPACITY**

40°F	22°C	60°F	33°C	80°F	44°C	100°F	56°C	120°F	67°C	140°F	78°C
4848	18352	3232	12234	2424	9176	1939	7341	1616	6117	1385	5243

**ASME**

<b>ASME Sect IV Htg Surface</b>	189 Sq. Ft. / 17.56 Sq. M.	<b>Design Data</b>	Max. 160 psig & 250°F
<b>Water Volume</b>	5.40 gal / 20.4 l (liters)		

**REP FIRM** \_\_\_\_\_  
**SUBMITTED BY** \_\_\_\_\_  
**JOB NAME** \_\_\_\_\_  
**ARCHITECT** \_\_\_\_\_  
**ENGINEER** \_\_\_\_\_  
**CONTRACTOR** \_\_\_\_\_  
**DATE** \_\_\_\_\_

**LCD 1970**

**Category I or Category III Appliance**  
(See Installation and Operation Manual for venting information)

**RBI**® A Division of Mestek, Inc.  
Westfield, MA 01085  
(413) 568-9571

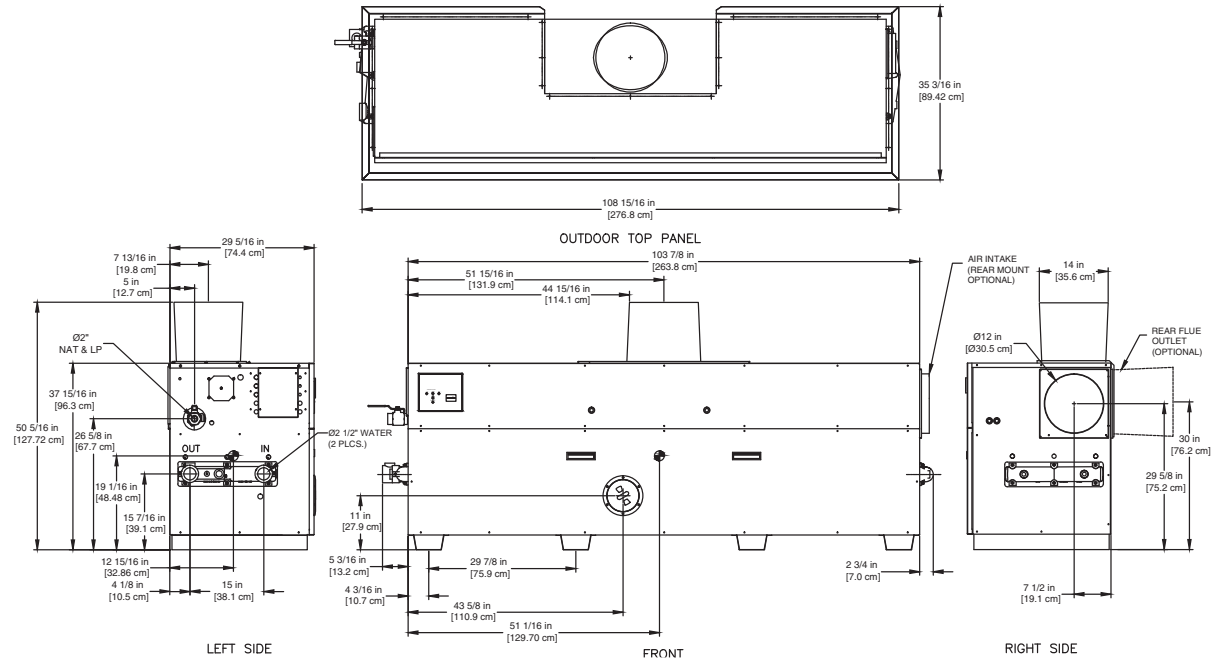
### CODE OPTIONS

<b>CSD-1</b>	UTC Lockout/Reset Control Manual Reset LWCO
<b>Kentucky</b> (Water Htr Only)	200°F Maximum Operating Control and High Limit

**NOTE:** Dimensions are approximate and should not be used to "rough-in" equipment.

\* Add circulator amps.

\*\*For incoming gas pressures lower than 6" WC natural or 11" WC propane, consult factory.



RSUB-24-F

### AGA CERTIFIED RATINGS & CAPACITIES

<b>Fuel Type</b>	Natural/Propane Gas	<b>Boiler FLA</b>	12.5*
<b>Input BTU/hr.</b>	2,299,920 / 674 kW	<b>Min. Gas Pressure Required</b>	6" WC**
<b>Output BTU/hr.</b>	1,885,934 / 553 kW	<b>Max. Gas Pressure Allowed</b>	14" WC
<b>Electrical Requirements</b>	120VAC / 1 ph / 60 hz / 17 amp	<b>Operating Weight</b>	1085 lbs. / 492 kg.

### TEMPERATURE RISE / PRESSURE DROP

30°F / 16.7°C				35°F / 19.4°C			
Flow Rate		Pressure Drop		Flow Rate		Pressure Drop	
GPM	L/s	Ft	kPa	GPM	L/s	Ft	kPa
125.7*	7.9	12.45	36.7	107.8	6.8	9.36	27.6

\*Flow exceeds recommended maximum use a greater temperature rise or consult manufacturer. Cupro-Nickel heat exchanger should be considered.

### BOILER TRIM & CONTROLS

<b>Main Gas Valve</b>	Honeywell V8944B 2"	<b>Pilot Valve</b>	Honeywell VR8205Q
<b>Firing Valve</b>	Honeywell B200T1066 2"	<b>Air Switch</b>	Cleveland RSS-495
<b>Safety Valve</b>	Honeywell V48A 2"	<b>Blower Motor</b>	(2) 1/4 hp (1) 1/5 hp - FLA 13.2
<b>Ignition Control</b>	UTC 1003-61A	<b>Relief Valve - LW</b>	3/4" x 3/4" set @ 125 psi
<b>Operating Control (LB/LW)</b>	Jumo	<b>Relief Valve - LB</b>	1" x 1-1/4" set @ 50 psi
<b>High Limit (LB/LW)</b>	Jumo	<b>Flow Switch</b>	TACO IFS-1

### RECOVERY CAPACITY

40°F	22°C	60°F	33°C	80°F	44°C	100°F	56°C	120°F	67°C	140°F	78°C
5660	21426	3773	14284	2830	10713	2264	8570	1887	7142	1617	6122

### ASME

<b>ASME Sect IV Htg Surface</b>	202 Sq. Ft. / 18.77 Sq. M.	<b>Design Data</b>	Max. 160 psig & 250°F
<b>Water Volume</b>	5.64 gal / 21.4 l (liters)		

**REP FIRM** \_\_\_\_\_  
**SUBMITTED BY** \_\_\_\_\_  
**JOB NAME** \_\_\_\_\_  
**ARCHITECT** \_\_\_\_\_  
**ENGINEER** \_\_\_\_\_  
**CONTRACTOR** \_\_\_\_\_  
**DATE** \_\_\_\_\_

# LCD 2300

**Category I or Category III Appliance**  
(See Installation and Operation Manual for venting information)



A Division of Mestek, Inc.  
Westfield, MA 01085  
(413) 568-9571