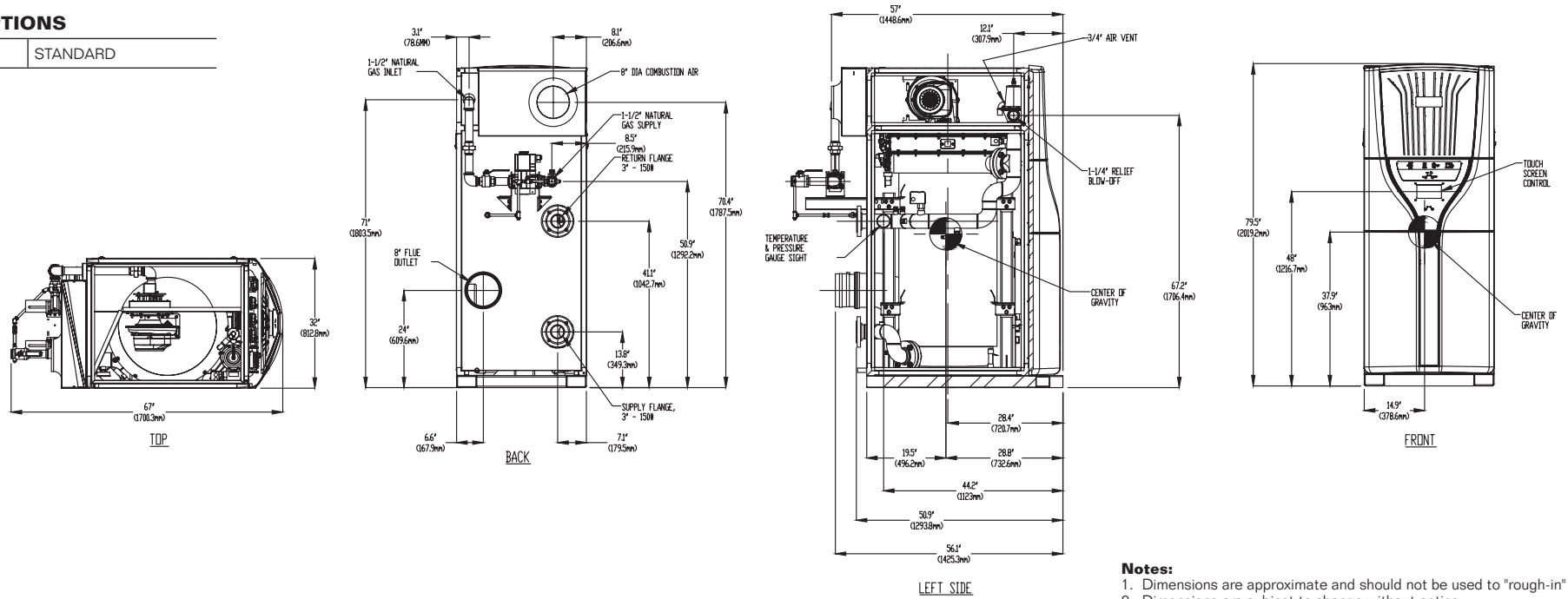


## CODE OPTIONS

CSD-1	STANDARD
-------	----------



### Notes:

1. Dimensions are approximate and should not be used to "rough-in" equipment.
2. Dimensions are subject to change without notice.

## BOILER CERTIFIED RATINGS & CAPACITIES

<b>Fuel Type</b>	Natural Gas	<b>Boiler FLA</b>	10.3*
<b>Input BTU/hr.</b>	3,000,000 / 879 KW	<b>Boiler HP</b>	86.8
<b>Output BTU/hr.</b>	2,904,000 / 851KW	<b>Min. Gas Pressure Required</b>	3" W.C.
<b>Electrical Requirements</b>	208/230 VAC 60 hz/3PH (with neutral)	<b>Max. Gas Pressure Allowed</b>	14" W.C.
		<b>Operating Weight</b>	2100 lbs / 953 kg

## BOILER TRIM & CONTROLS

<b>Main Gas Valve</b>	Dungs MBC	<b>Air Switch</b>	Huba
<b>Firing Valve</b>	1 1/2" Apollo	<b>Flow Switch</b>	TACO
<b>Ignition Control</b>	Honeywell RM7895C	<b>Blocked Flue Switch</b>	Cleveland NS2
<b>Operating Control</b>	HeatNet®	<b>Blower Motor</b>	Ametek
<b>High Limit</b>	Honeywell L4006E	<b>L.W.C.O.</b>	750P-MT-120
<b>Main Ball Valve</b>	1 1/2" Apollo	<b>Relief Valve</b>	1-1/4" x 1-1/2" set @ 50 psi
<b>Pilot Cock</b>	1/4"	<b>Pilot Regulator</b>	CV100

## A.S.M.E.

<b>ASME Sect IV Fire Side</b>	235 Sq. Ft. / 21.8 Sq. M.	<b>Design Data</b>	Max. 160 psig & 210°F
<b>Htg Surface</b>		<b>Water Volume</b>	56 gal / 210 liters
<b>ASME Sect IV Water Side</b>	244 Sq. Ft. / 22.6 Sq. M.		
<b>Htg Surface</b>			
<b>CV. GPM (1PSID)</b>	132		

\* Add circulator amps.

## BOILER TEMPERATURE RISE / PRESSURE DROP (Based on Full Input)

20°F / 11.1°C		40°F / 22.2°C		60°F / 33.3°C		80°F / 44.4°C		100°F / 55.5°C			
Flow Rate	Pressure Drop	Flow Rate	Pressure Drop	Flow Rate	Pressure Drop	Flow Rate	Pressure Drop	Flow Rate	Pressure Drop		
GPM	L/s	Ft	kPa	GPM	L/s	Ft	kPa	GPM	L/s	Ft	kPa
290.5	18.3	11.2	33.4	145.3	9.1	2.8	8.4	96.8	6.1	1.2	3.5
								72.6	4.5	.7	2.0
								58.1	3.6	.4	1.1

Flow GPM		Temp. Rise** (°F)		Vent Length (Equiv. Ft.)		Air Inlet Length (Equiv. Ft.)	
Min	Max	Min	Max	Min	Max	Min	Max
58.1	290.5	20	100	6	100	0	100

\*\* Min/Max delta t reflects boiler operation at full input. For applications requiring operation above/below these parameters please consult factory.

**REP FIRM** \_\_\_\_\_  
**SUBMITTED BY** \_\_\_\_\_  
**JOB NAME** \_\_\_\_\_  
**ARCHITECT** \_\_\_\_\_  
**ENGINEER** \_\_\_\_\_  
**CONTRACTOR** \_\_\_\_\_  
**DATE** \_\_\_\_\_

# FlexCore 3000

**Category II or Category IV Appliance**  
(see Installation and Operation Manual for venting information)



A Division of Mestek, Inc.  
Westfield, MA 01085  
(413) 568-9571