

Submittal Data Sheet

Wilco IPL - In-line Centrifugal Circulators

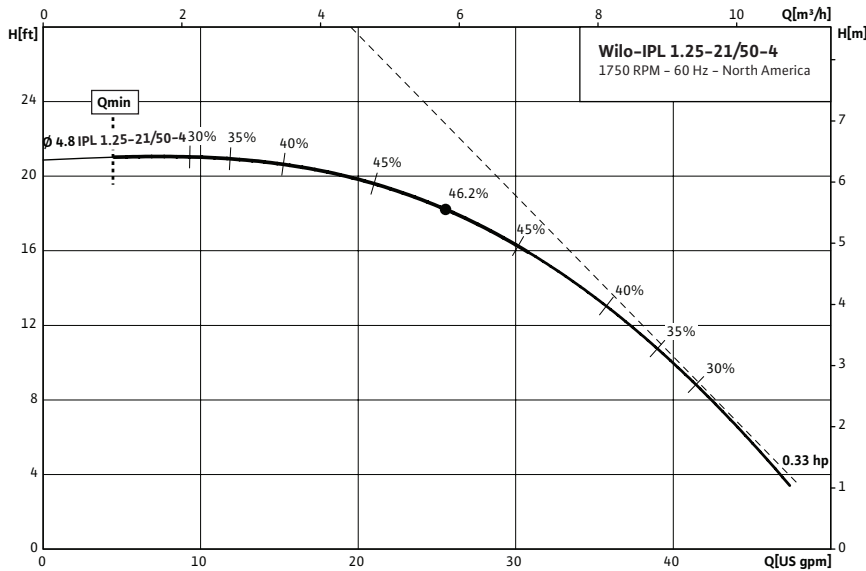


Wilco IPL 1.25 1750 RPM



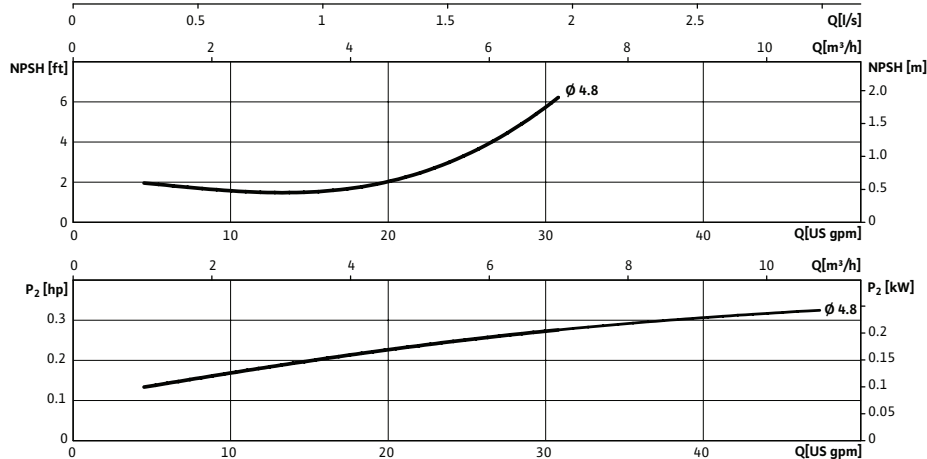
Project:	
Engineer:	
Contractor:	
Submitted By:	Date:
Approved By:	Date:

Tag #	Model #	Flow	Head	HP	Cycle	Phase	Voltage	RPM
	IPL 1.25-21/50-4				60Hz			1,750 (4 Pole)

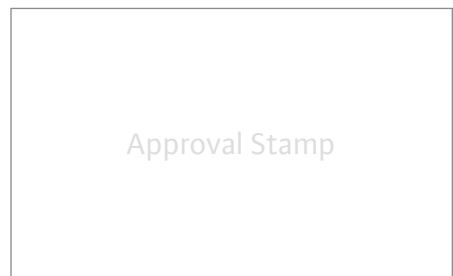


Technical Data	
Temp Range:	15 °F to + 250 °F (-10 °C to +120 °C)
Power Supply	1~115 / 208-230 V, 60 Hz
Motor Options	TEFC, (ODP Opt), EPACK Rated
Flange Connection	1 1/4" with 1/4" pressure gauge tappings
Max operating pressure:	145 PSI (10 Bar)

Materials of Construction	
Pump volute	Cast Iron
Impeller	Engineered composite
Shaft	316L stainless steel stub shaft
Mechanical seal	Q1Q1X4GG (silicium carbide seal faces, HNBR elastomers)



Applications	
• Hot water heating systems	• Industrial circulation systems
• Air conditioning systems	• Solar Systems
• Closed cooling circuits	• Geothermal Systems

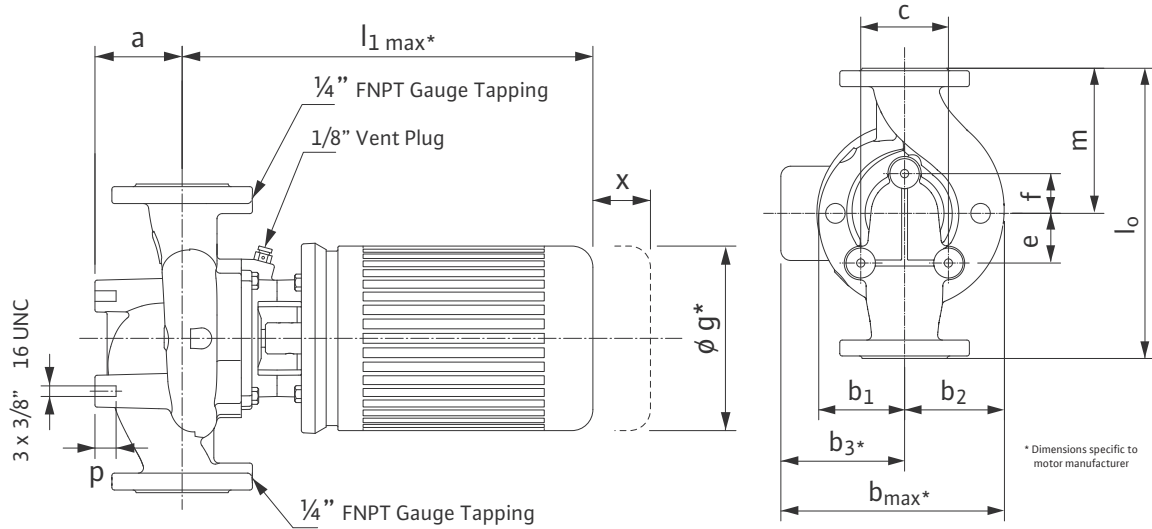


Submittal Data Sheet

Wilo IPL - Inline Centrifugal Circulators



Dimensions & Weights

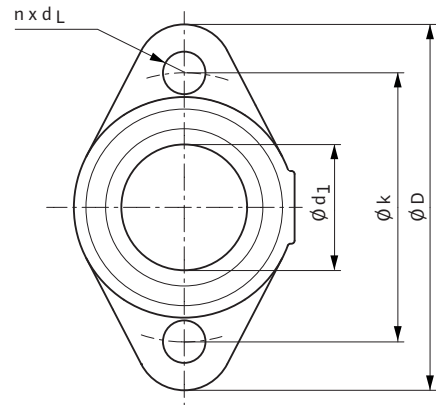


Dimensions and Weights

Model	Dimensions—inches (mm)															Weight
	Dia.	a	l_1	b_1	b_2	b_3	b_{max}	c	e	f	g	l_0	m	p	x	
IPL 1.25-21/50-4	1 1/4 (32)	2 3/4 (70)	17 11/16 (449)	3 3/4 (96)	4 1/16 (104)	5 1/4 (133)	9 1/16 (229)	3 9/16 (90)	1 9/16 (40)	1 15/16 (50)	7 (178)	11 (279)	5 1/2 (140)	1 3/16 (20)	5 7/8 (54)	52 lbs 23.6 kg

Flange Dimensions

Dimensions - Inches (mm)				
DN	ϕD	ϕd_1	ϕk	$n \times d_L$
1.25	4 3/4 (121)	2 7/8 (73)	3 1/2 (89)	2 x 9/16 (2 x 14)



TEFC Motor Data

Model	P2 [HP]	Phase [-]	FLA [A]	Voltage [V]
IPL 1.25-21/50-4	.33	1	6 / 3.2 - 3	115 / 208-230

WILO USA LLC

Tel: (866) 945-6872 Web: www.wilo-usa.com
 Fax: (708) 338-9455 Email: info@wilo-usa.com

WILO Canada Inc.

Tel: (866) 945-6236 Web: www.wilo-canada.com
 Fax: (403) 277-9456 Email: info@wilo-canada.com

WILO Mexico

Tel: +52 55 5586 3209 Web: www.wilo-mexico.com.mx
 Fax: +52 1 55 5413 4165 Email: info@wilo.com.mx

Submittal Data Sheet

Wilco IPL - Inline Centrifugal Circulators

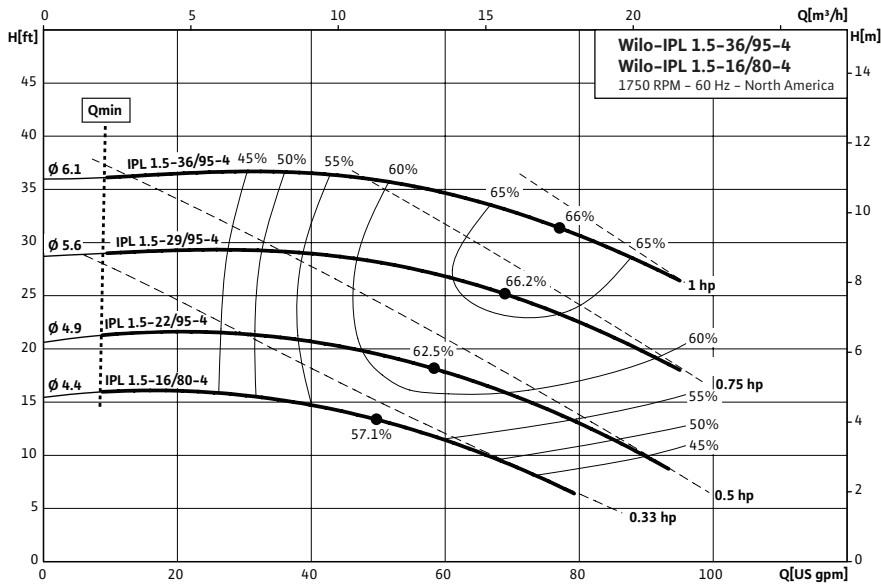


Wilco IPL 1.5 1750 RPM



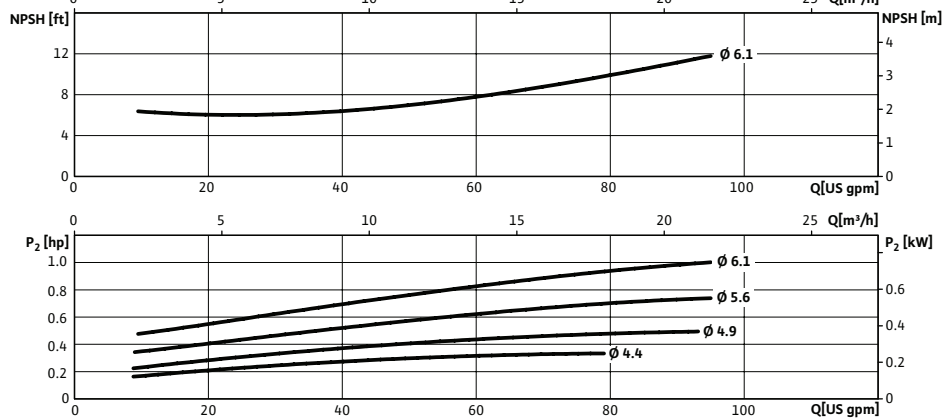
Project:	
Engineer:	
Contractor:	
Submitted By:	Date:
Approved By:	Date:

Tag #	Model #	Flow	Head	HP	Cycle	Phase	Voltage	RPM
					60Hz			1,750 (4 Pole)



Technical Data	
Temp Range:	15 °F to + 250 °F (-10 °C to +120 °C)
Power Supply	1~115 / 208-230 V, 60 Hz
Motor Options	TEFC, (ODP Opt), EPACT Rated
Flange Connection	1½" with ¼" pressure gauge tapping
Max operating pressure:	145 PSI (10 Bar)

Materials of Construction	
Pump volute	Cast Iron
Impeller	Engineered composite
Shaft	316L stainless steel stub shaft
Mechanical seal	Q1Q1X4GG (silicium carbide seal faces, HNBR elastomers)



Applications	
• Hot water heating systems	• Industrial circulation systems
• Air conditioning systems	• Solar Systems
• Closed cooling circuits	• Geothermal Systems

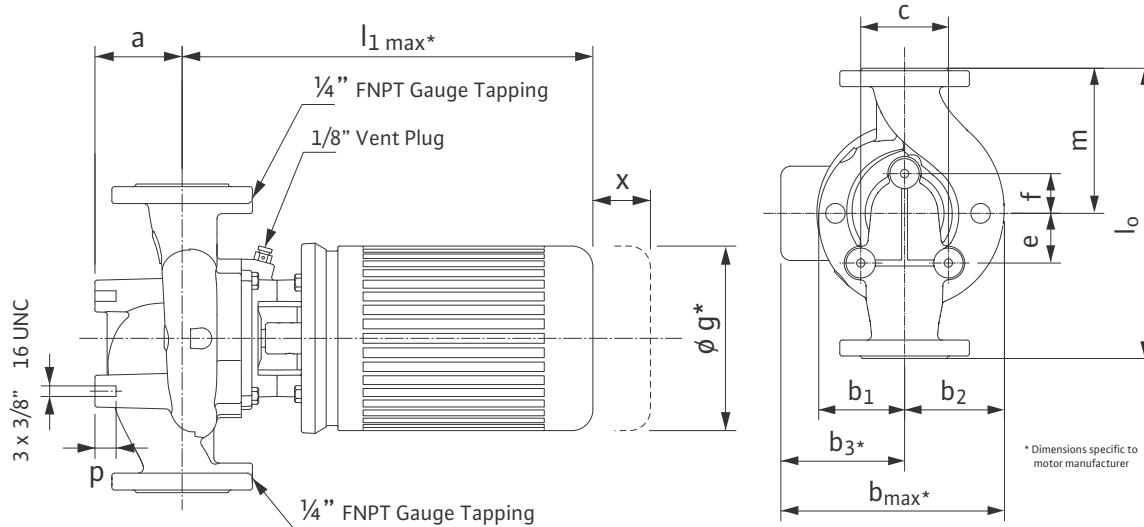


Submittal Data Sheet

Wilo IPL - Inline Centrifugal Circulators



Dimensions & Weights

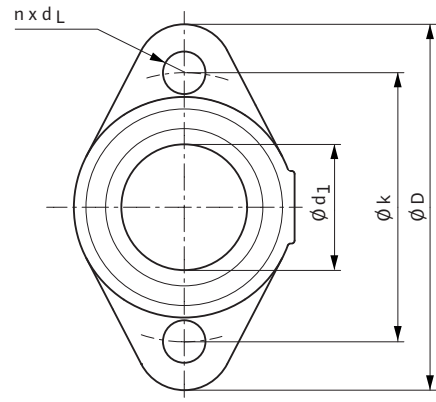


Dimensions and Weights

Model	Dimensions-inches (mm)															Weight	
	Dia.	a	l ₁	b ₁	b ₂	b ₃	b _{max}	c	e	f	g	l ₀	m	o	p		x
IPL 1.5-16/80-4	1½	2 ^{15/16}	17 ^{7/16}	4 ^{5/16}	4¾	5¼	9 ^{9/16}	3 ^{9/16}	1 ^{9/16}	1 ^{15/16}	7	13	6½	¾	1 ^{3/16}	5 ^{7/8}	56.7 lbs
	(40)	(75)	(444)	(109)	(121)	(133)	(242)	(90)	(40)	(50)	(178)	(330)	(165)	¾	(20)	(49)	26 kg
IPL 1.5-22/95-4	1½	2 ^{15/16}	17 ^{7/16}	4 ^{5/16}	4¾	5¼	9 ^{9/16}	3 ^{9/16}	1 ^{9/16}	1 ^{15/16}	7	13	6½	¾	1 ^{3/16}	5 ^{7/8}	58.6 lbs
	(40)	(75)	(444)	(109)	(121)	(133)	(242)	(90)	(40)	(50)	(178)	(330)	(165)	¾	(20)	(49)	27 kg
IPL 1.5-29/95-4	1½	2 ^{15/16}	16 ^{1/8}	4 ^{5/16}	4¾	5¼	9 ^{9/16}	3 ^{9/16}	1 ^{9/16}	1 ^{15/16}	6 ^{3/16}	13	6½	¾	1 ^{3/16}	5 ^{7/8}	68.6 lbs
	(40)	(75)	(410)	(109)	(121)	(133)	(242)	(90)	(40)	(50)	(158)	(330)	(165)	¾	(20)	(49)	31 kg
IPL 1.5-36/95-4	1½	2 ^{15/16}	17 ^{7/16}	4 ^{5/16}	4¾	5¼	9 ^{9/16}	3 ^{9/16}	1 ^{9/16}	1 ^{15/16}	7	13	6½	¾	1 ^{3/16}	5 ^{7/8}	76.7 lbs
	(40)	(75)	(444)	(109)	(121)	(133)	(242)	(90)	(40)	(50)	(178)	(330)	(165)	¾	(20)	(49)	35 kg

Flange Dimensions

Dimensions - Inches (mm)				
DN	øD	ød ₁	øk	n x d _L
1.5	4¾	2 ^{7/8}	3½	2 x 9/16
	(121)	(73)	(89)	(2 x 14)



TEFC Motor Data

Model	P2	Phase	FLA	Voltage
	[HP]	[~]	[A]	[V]
IPL 1.5-16/80-4	.33	1	6 / 3.2 - 3	115 / 208-230
IPL 1.5-22/95-4	.5	1	8.4 / 4.4 - 4.2	115 / 208-230
IPL 1.5-29/95-4	.75	1	10.2 / 5.4 - 5.1	115 / 208-230
IPL 1.5-36/95-4	1	1	13.4 / 7.4 - 6.7	115 / 208-230

WILO USA LLC

Tel: (866) 945-6872 Web: www.wilo-usa.com
Fax: (708) 338-9455 Email: info@wilo-usa.com

WILO Canada Inc.

Tel: (866) 945-6236 Web: www.wilo-canada.com
Fax: (403) 277-9456 Email: info@wilo-canada.com

WILO Mexico

Tel: +52 55 5586 3209 Web: www.wilo-mexico.com.mx
Fax: +52 1 55 5413 4165 Email: info@wilo.com.mx

Submittal Data Sheet

Wilo IPL - Inline Centrifugal Circulators

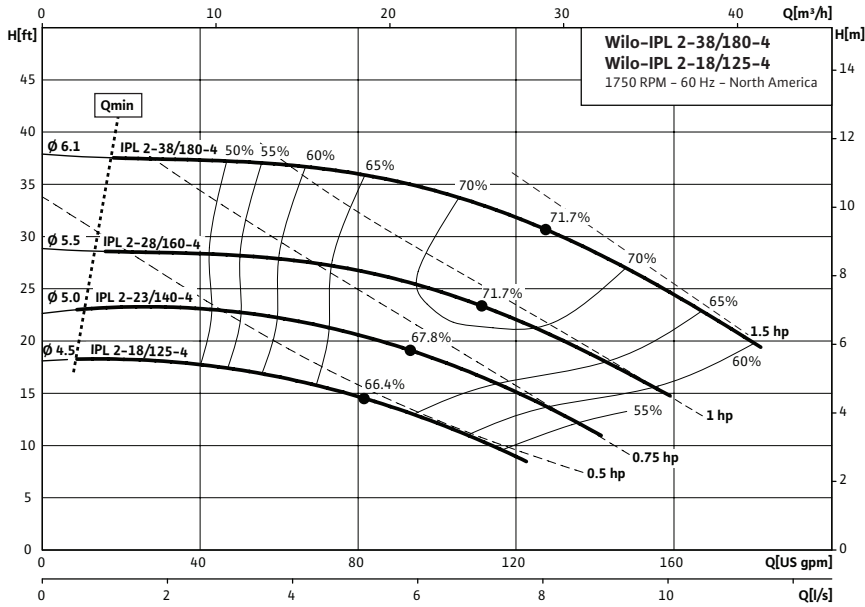


Wilo IPL 2 1750 RPM



Project:	
Engineer:	
Contractor:	
Submitted By:	Date:
Approved By:	Date:

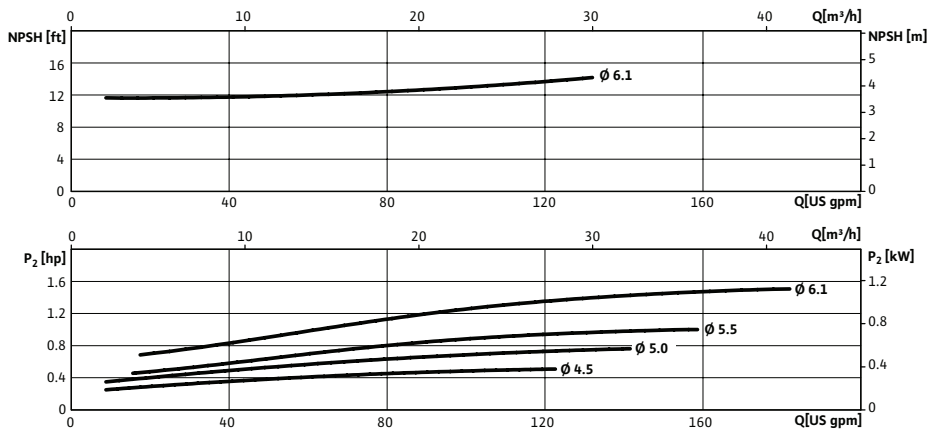
Tag #	Model #	Flow	Head	HP	Cycle	Phase	Voltage	RPM
					60Hz			1,750 (4 Pole)



Technical Data	
Temp Range:	15 °F to + 250 °F (-10 °C to +120 °C)
Power Supply	1~115 / 208-230 V, 60 Hz 3~208-230 / 460 V, 60 Hz 3~575 V, 60 Hz
Motor Options	TEFC, (ODP Opt), EPACK Rated
Flange Connection	2" with 1/4" pressure gauge tappings
Max operating pressure:	145 PSI (10 Bar)

Materials of Construction	
Pump volute	Cast Iron
Impeller	Engineered composite
Shaft	316L stainless steel stub shaft
Mechanical seal	Q1Q1X4GG (silicium carbide seal faces, HNBR elastomers)

Applications	
• Hot water heating systems	• Industrial circulation systems
• Air conditioning systems	• Solar Systems
• Closed cooling circuits	• Geothermal Systems



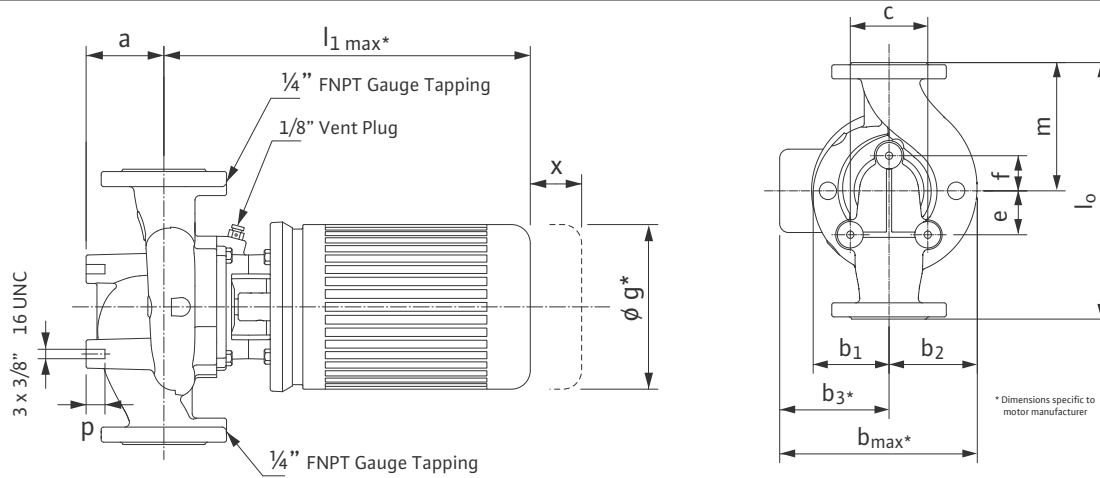
Approval Stamp

Submittal Data Sheet

Wilo IPL - In-line Centrifugal Circulators



Dimensions & Weights

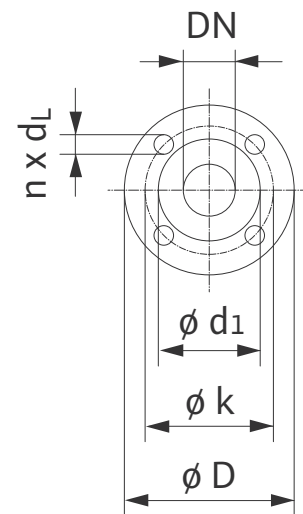


Dimensions and Weights

Model	Dimensions—Inches (mm)															Weight
	Dia.	a	l_1	b_1	b_2	b_3	b_{max}	c	e	f	g	l_0	m	p	x	
IPL 2-18/125-4	2	3 1/2	17 9/16	4 1/2	5 1/8	5 1/4	9 3/4	4 1/8	1 9/16	1 15/16	7	14	6 3/4	1 3/16	5 7/8	66.4 lbs
	(50)	(89)	(446)	(114)	(130)	(133)	(248)	(104)	(40)	(50)	(178)	(356)	(172)	(20)	(51)	30.1 kg
IPL 2-23/140-4	2	3 1/2	17 9/16	4 1/2	5 1/8	5 1/4	9 3/4	4 1/8	1 9/16	1 15/16	7	14	6 3/4	1 3/16	5 7/8	76.3 lbs
	(50)	(89)	(446)	(114)	(130)	(133)	(248)	(104)	(40)	(50)	(178)	(356)	(172)	(20)	(51)	34.6 kg
IPL 2-28/160-4	2	3 1/2	17 9/16	4 1/2	5 1/8	5 1/4	9 3/4	4 1/8	1 9/16	1 15/16	7	14	6 3/4	1 3/16	5 7/8	84.4 lbs
	(50)	(89)	(446)	(114)	(130)	(133)	(248)	(104)	(40)	(50)	(178)	(356)	(172)	(20)	(51)	38.4 kg
IPL 2-38/180-4	2	3 1/2	17 9/16	4 1/2	5 1/8	5 1/4	9 3/4	4 1/8	1 9/16	1 15/16	7	14	6 3/4	1 3/16	5 7/8	91.3 lbs
	(50)	(89)	(446)	(114)	(130)	(133)	(248)	(104)	(40)	(50)	(178)	(356)	(172)	(20)	(51)	41.4 kg

Flange Dimensions

Dimensions - Inches (mm)				
DN	ϕD	ϕd_1	ϕk	$n \times d_L$
2	5 1/4	3 7/16	3 1/2	4 x 9/16
	(133)	(87)	(102)	(4 x 14)



TEFC Motor Data

Model	P2	Phase	FLA	Voltage
	[HP]	[-]	[A]	[V]
IPL 2-18/125-4	.5	1	8.4 / 4.4 - 4.2	115 / 208-230
	.75	1	10.2 / 5.4 - 5.1	115 / 208-230
IPL 2-28/160-4	1	1	13.4 / 7.4 - 6.7	115 / 208-230
	1	3	3.4 / 1.7	208-230 / 460
	1	3	1.4	575
	1.5	1	18 / 9.5 - 9	115 / 208-230
IPL 2-38/180-4	1.5	3	5 - 4.8 / 2.4	208-230 / 460
	1.5	3	1.9	575

WILO USA LLC

Tel: (866) 945-6872 Web: www.wilo-usa.com
 Fax: (708) 338-9455 Email: info@wilo-usa.com

WILO Canada Inc.

Tel: (866) 945-6236 Web: www.wilo-canada.com
 Fax: (403) 277-9456 Email: info@wilo-canada.com

WILO Mexico

Tel: +52 55 5586 3209 Web: www.wilo-mexico.com.mx
 Fax: +52 1 55 5413 4165 Email: info@wilo.com.mx

Submittal Data Sheet

Wilco IPL - In-line Centrifugal Circulators

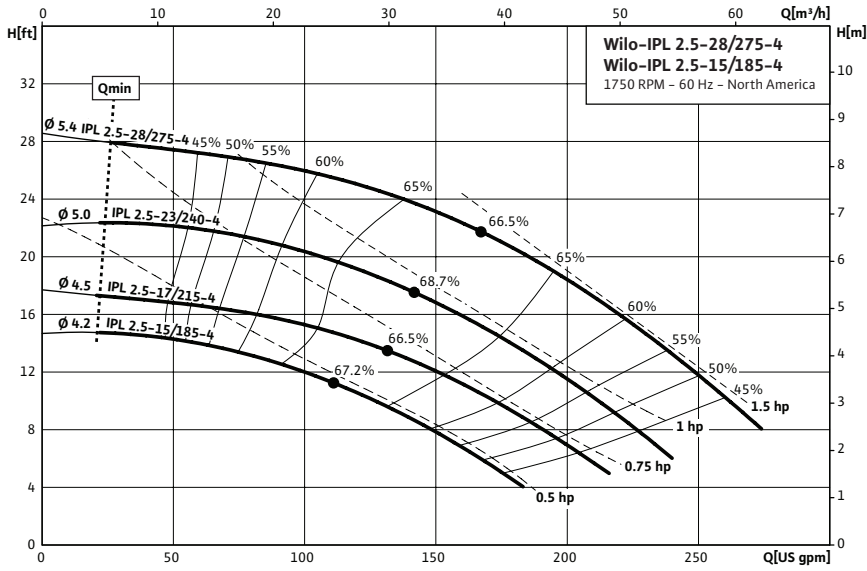


Wilco IPL 2.5 1750 RPM



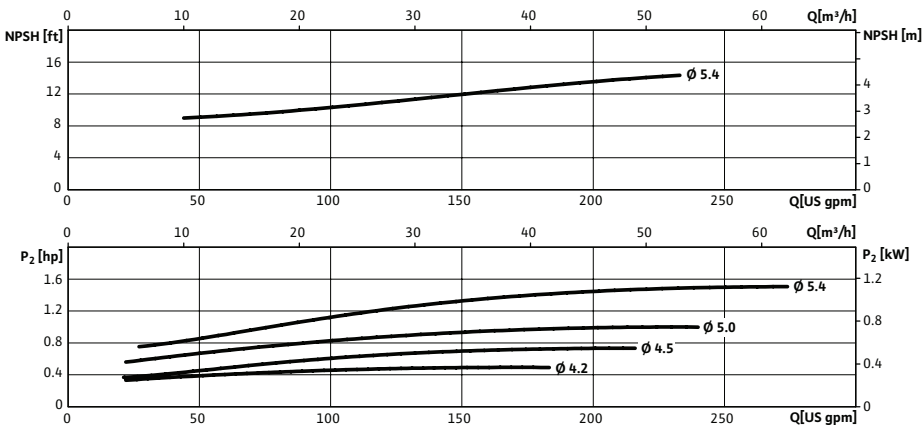
Project:	
Engineer:	
Contractor:	
Submitted By:	Date:
Approved By:	Date:

Tag #	Model #	Flow	Head	HP	Cycle	Phase	Voltage	RPM
					60Hz			1,750 (4 Pole)

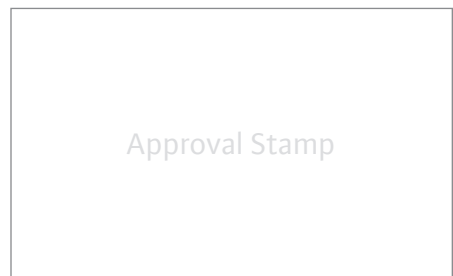


Technical Data	
Temp Range:	15 °F to + 250 °F (-10 °C to +120 °C)
Power Supply	1~115 / 208-230 V, 60 Hz 3~208-230 / 460 V, 60 Hz 3~575 V, 60 Hz
Motor Options	TEFC, (ODP Opt), EPACK Rated
Flange Connection	2½" with ¼" pressure gauge tappings
Max operating pressure:	145 PSI (10 Bar)

Materials of Construction	
Pump volute	Cast Iron
Impeller	Engineered composite
Shaft	316L stainless steel stub shaft
Mechanical seal	Q1Q1X4GG (silicium carbide seal faces, HNBR elastomers)



Applications	
• Hot water heating systems	• Industrial circulation systems
• Air conditioning systems	• Solar Systems
• Closed cooling circuits	• Geothermal Systems

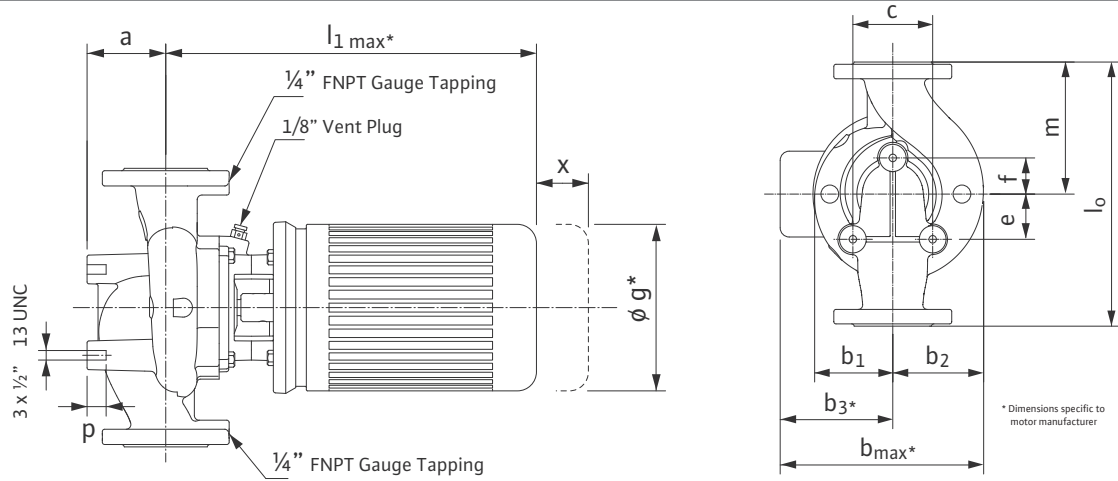


Submittal Data Sheet

Wilo IPL - In-line Centrifugal Circulators



Dimensions & Weights



Dimensions and Weights

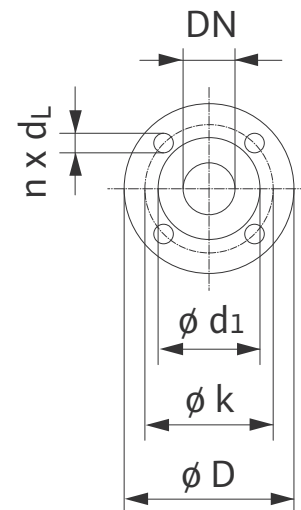
Model	Dimensions-inches (mm)															Weight
	Dia.	a	l_1	b_1	b_2	b_3	b_{max}	c	e	f	g	l_0	m	p	x	
IPL 2.5-15/185-4	2½	3¾	17 ^{13/16}	4 ^{11/16}	5 ^{7/16}	5¼	10 ^{1/8}	5 ^{5/16}	1 ^{9/16}	2 ^{3/16}	7	13½	6¾	1 ^{3/16}	5 ^{7/8}	78.7 lbs
	(65)	(95)	(452)	(119)	(138)	(133)	(257)	(135)	(40)	(55)	(178)	(343)	(171)	(20)	(57)	35.7 kg
IPL 2.5-17/215-4	2½	3¾	16 ^{7/16}	4 ^{11/16}	5 ^{7/16}	5¼	10 ^{1/8}	5 ^{5/16}	1 ^{9/16}	2 ^{3/16}	6 ^{3/16}	13½	6¾	1 ^{3/16}	5 ^{7/8}	88.8 lbs
	(65)	(95)	(418)	(119)	(138)	(133)	(257)	(135)	(40)	(55)	(158)	(343)	(171)	(20)	(57)	40.3 kg
IPL 2.5-23/240-4	2½	3¾	17 ^{13/16}	4 ^{11/16}	5 ^{7/16}	5¾	10 ^{1/8}	5 ^{5/16}	1 ^{9/16}	2 ^{3/16}	7	13½	6¾	1 ^{3/16}	5 ^{7/8}	96.8 lbs
	(65)	(95)	(452)	(119)	(138)	(146)	(257)	(135)	(40)	(55)	(178)	(343)	(171)	(20)	(57)	43.9 kg
IPL 2.5-28/275-4	2½	3¾	17 ^{13/16}	4 ^{11/16}	5 ^{7/16}	5¾	10 ^{1/8}	5 ^{5/16}	1 ^{9/16}	2 ^{3/16}	7	13½	6¾	1 ^{3/16}	5 ^{7/8}	89.7 lbs
	(65)	(95)	(452)	(119)	(138)	(146)	(257)	(135)	(40)	(55)	(178)	(343)	(171)	(20)	(57)	40.7 kg

Flange Dimensions

Dimensions - Inches (mm)				
DN	ϕD	ϕd_1	ϕk	$n \times d_L$
2.5	7	4 ^{5/8}	5½	4 X ¾
	(178)	(118)	(140)	(4 x 19)

TEFC Motor Data

Model	P2	Phase	FLA	Voltage
	[HP]	[~]	[A]	[V]
IPL 2.5-15/185-4	.5	1	8.4 / 4.4 - 4.2	115 / 208-230
IPL 2.5-17/215-4	.75	1	10.2 / 5.4 - 5.1	115 / 208-230
	1	1	13.4 / 7.4 - 6.7	115 / 208-230
IPL 2.5-23/240-4	1	3	3.4 / 1.7	208-230 / 460
	1	3	1.4	575
IPL 2.5-28/275-4	1.5	1	18 / 9.5 - 9	115 / 208-230
	1.5	3	5 - 4.8 / 2.4	208-230 / 460
	1.5	3	1.9	575



WILO USA LLC

Tel: (866) 945-6872 Web: www.wilo-usa.com
 Fax: (708) 338-9455 Email: info@wilo-usa.com

WILO Canada Inc.

Tel: (866) 945-6236 Web: www.wilo-canada.com
 Fax: (403) 277-9456 Email: info@wilo-canada.com

WILO Mexico

Tel: +52 55 5586 3209 Web: www.wilo-mexico.com.mx
 Fax: +52 1 55 5413 4165 Email: info@wilo.com.mx

Submittal Data Sheet

Wilco IPL - In-line Centrifugal Circulators

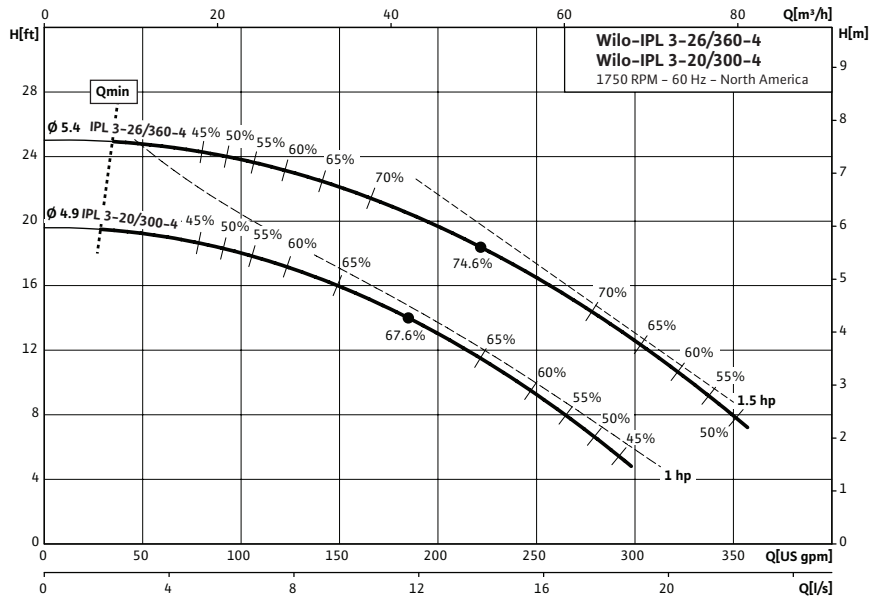


Wilco IPL 3 1750 RPM



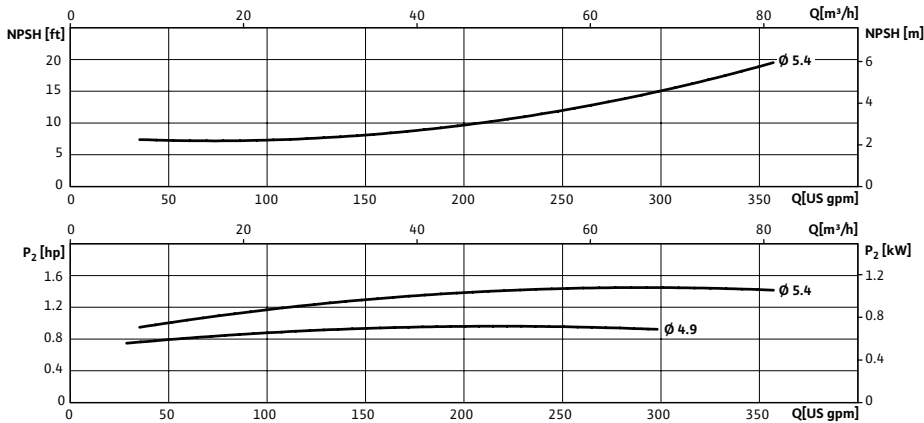
Project:	
Engineer:	
Contractor:	
Submitted By:	Date:
Approved By:	Date:

Tag #	Model #	Flow	Head	HP	Cycle	Phase	Voltage	RPM
					60Hz			1,750 (4 Pole)



Technical Data	
Temp Range:	15 °F to + 250 °F (-10 °C to +120 °C)
Power Supply	1~115 / 208-230 V, 60 Hz 3~208-230 / 460 V, 60 Hz 3~575 V, 60 Hz
Motor Options	TEFC, (ODP Opt), EPACT Rated
Flange Connection	3" with 1/4" pressure gauge tappings
Max operating pressure:	145 PSI (10 Bar)

Materials of Construction	
Pump volute	Cast Iron
Impeller	Engineered composite
Shaft	316L stainless steel stub shaft
Mechanical seal	Q1Q1X4GG (silicium carbide seal faces, HNBR elastomers)



Applications	
• Hot water heating systems	• Industrial circulation systems
• Air conditioning systems	• Solar Systems
• Closed cooling circuits	• Geothermal Systems

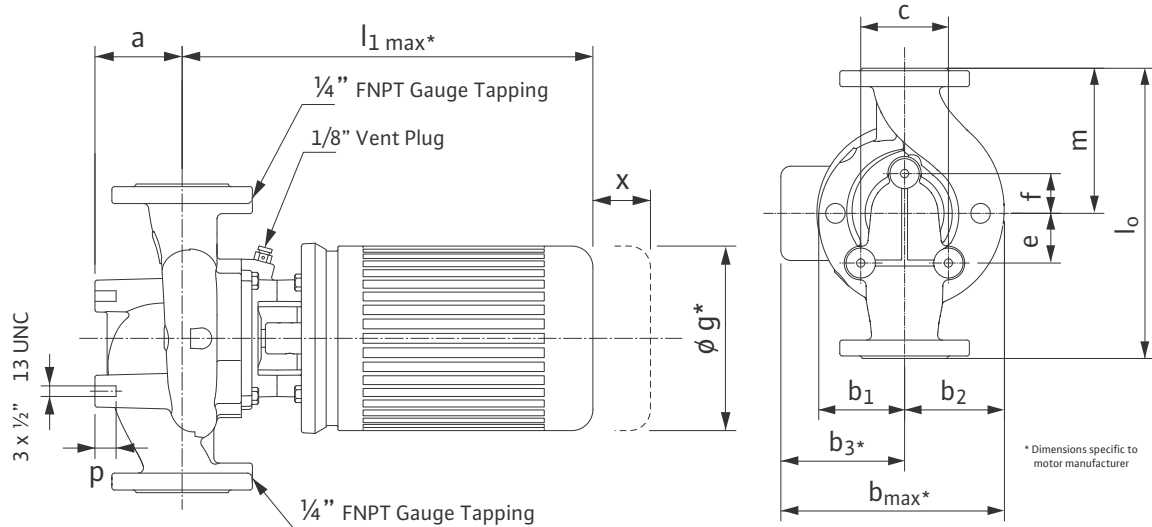
Approval Stamp

Submittal Data Sheet

Wilo IPL - In-line Centrifugal Circulators



Dimensions & Weights

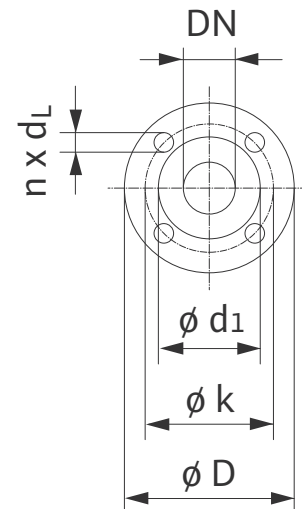


Dimensions and Weights

Model	Dimensions-inches (mm)															Weight
	Dia.	a	l_1	b_1	b_2	b_3	b_{max}	c	e	f	g	l_0	m	p	x	
IPL 3-20/300-4	3	4 ^{1/8}	18 ^{1/16}	4 ^{15/16}	6	5 ^{3/4}	10 ^{7/8}	5 ^{5/16}	1 ^{9/16}	2 ^{3/16}	7	15	7	1 ^{3/16}	5 ^{7/8}	103.6 lbs
	(80)	(105)	(458)	(125)	(152)	(146)	(277)	(135)	(40)	(55)	(178)	(381)	(178)	(20)	(63)	47 kg
IPL 3-26/360-4	3	4 ^{1/8}	18 ^{1/16}	4 ^{15/16}	6	5 ^{3/4}	10 ^{11/16}	5 ^{5/16}	1 ^{9/16}	2 ^{3/16}	7	15	7	1 ^{3/16}	5 ^{7/8}	110.7 lbs
	(80)	(105)	(458)	(125)	(152)	(146)	(271)	(135)	(40)	(55)	(178)	(381)	(178)	(20)	(63)	50.2 kg

Flange Dimensions

Dimensions - Inches (mm)				
DN	ϕD	ϕd_1	ϕk	n x d_L
3	7 ^{1/2}	5 ^{1/8}	6	4 X ^{3/4}
	(191)	(130)	(152.4)	(4 x 19)



TEFC Motor Data

Model	P2	Phase	FLA	Voltage
	[HP]	[-]	[A]	[V]
IPL 3-20/300-4	1	1	13.4 / 7.4 - 6.7	115 / 208-230
	1	3	3.4 / 1.7	208-230 / 460
	1	3	1.4	575
IPL 3-26/360-4	1.5	1	18 / 9.5-9	115 / 208-230
	1.5	3	5 - 4.8 / 2.4	208-230 / 460
	1.5	3	1.9	575

WILO USA LLC

Tel: (866) 945-6872 Web: www.wilo-usa.com
 Fax: (708) 338-9455 Email: info@wilo-usa.com

WILO Canada Inc.

Tel: (866) 945-6236 Web: www.wilo-canada.com
 Fax: (403) 277-9456 Email: info@wilo-canada.com

WILO Mexico

Tel: +52 55 5586 3209 Web: www.wilo-mexico.com.mx
 Fax: +52 1 55 5413 4165 Email: info@wilo.com.mx

Submittal Data Sheet

Wilo IPL - Inline Centrifugal Circulators

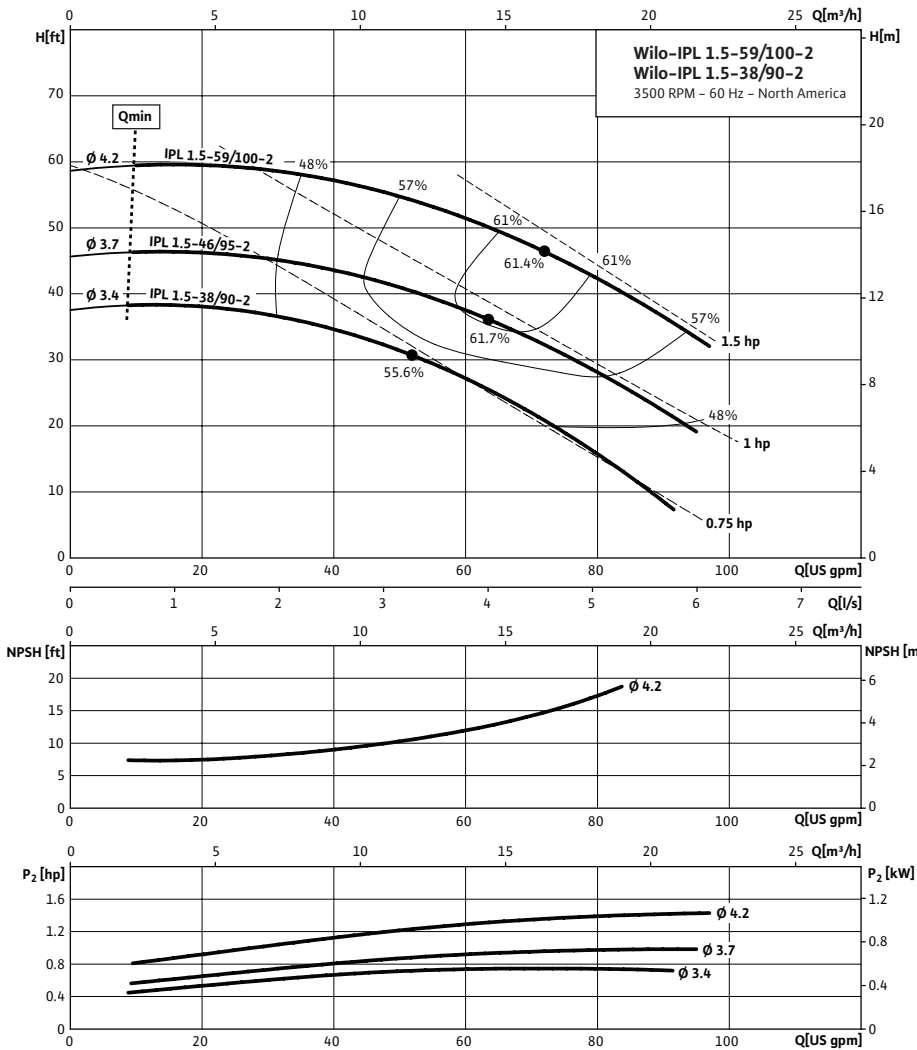


Wilo IPL 1.5 3500 RPM



Project:	
Engineer:	
Contractor:	
Submitted By:	Date:
Approved By:	Date:

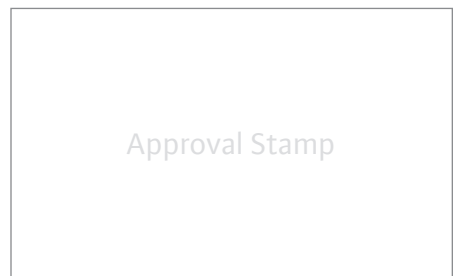
Tag #	Model #	Flow	Head	HP	Cycle	Phase	Voltage	RPM
					60Hz			3,500 (2 Pole)



Technical Data	
Temp Range:	15 °F to + 250 °F (-10 °C to +120 °C)
Power Supply	1~115 / 208-230 V, 60 Hz 3~208-230 / 460 V, 60 Hz 3~575 V, 60 Hz
Motor Options	TEFC, (ODP Opt), EPACT Rated
Flange Connection	1½" with ¼" pressure gauge tappings
Max operating pressure:	145 PSI (10 Bar)

Materials of Construction	
Pump volute	Cast Iron
Impeller	Engineered composite
Shaft	316L stainless steel stub shaft
Mechanical seal	Q1Q1X4GG (silicium carbide seal faces, HNBR elastomers)

Applications	
• Hot water heating systems	• Industrial circulation systems
• Air conditioning systems	• Solar Systems
• Closed cooling circuits	• Geothermal Systems

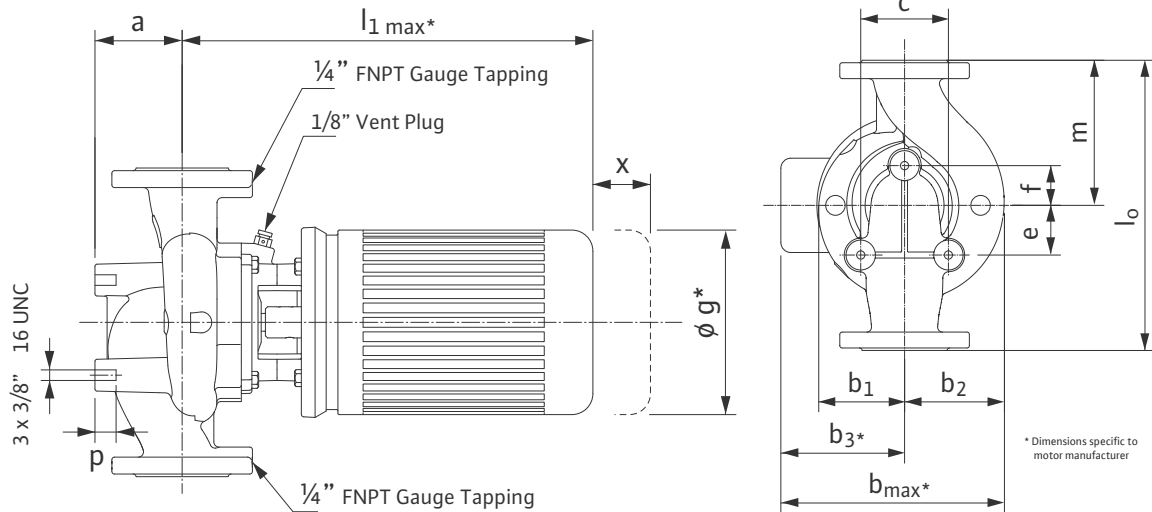


Submittal Data Sheet

Wilo IPL - In-line Centrifugal Circulators



Dimensions & Weights

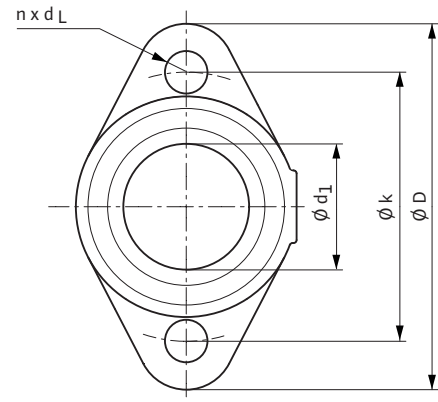


Dimensions and Weights

Model	Dimensions-inches (mm)															Weight
	Dia.	a	l ₁	b ₁	b ₂	b ₃	b _{max}	c	e	f	g	l ₀	m	p	x	
IPL 1.5-38/90-2	1½	12 ¹⁵ / ₁₆	17 ¹¹ / ₁₆	3 1/8	3 ⁹ / ₁₆	5¼	8 ³ / ₈	3 ⁹ / ₁₆	1 ⁹ / ₁₆	1 ¹⁵ / ₁₆	7	10	5	1 ³ / ₁₆	5 ⁷ / ₈	56.2 lbs
	(40)	(75)	(449)	(79)	(90)	(133)	(212)	(90)	(40)	(50)	(178)	(254)	(127)	(20)	(51)	25.5 kg
IPL 1.5-46/96-2	1½	12 ¹⁵ / ₁₆	17 ¹¹ / ₁₆	3 1/8	3 ⁹ / ₁₆	5¼	8 ³ / ₈	3 ⁹ / ₁₆	1 ⁹ / ₁₆	1 ¹⁵ / ₁₆	7	10	5	1 ³ / ₁₆	5 ⁷ / ₈	58.2 lbs
	(40)	(75)	(449)	(79)	(90)	(133)	(212)	(90)	(40)	(50)	(178)	(254)	(127)	(20)	(51)	26.4 kg
IPL 1.5-59/100-2	1½	12 ¹⁵ / ₁₆	17 ¹¹ / ₁₆	3 1/8	3 ⁹ / ₁₆	5¼	8 ³ / ₈	3 ⁹ / ₁₆	1 ⁹ / ₁₆	1 ¹⁵ / ₁₆	7	10	5	1 ³ / ₁₆	5 ⁷ / ₈	58.2 lbs
	(40)	(75)	(449)	(79)	(90)	(133)	(212)	(90)	(40)	(50)	(178)	(254)	(127)	(20)	(51)	26.4 kg

Flange Dimensions

Dimensions - Inches (mm)				
DN	øD	ød ₁	øk	n x d _L
1.5	4¾	2 ⁷ / ₈	3½	2 x ⁹ / ₁₆
	(121)	(73)	(89)	(2 x 14)



TEFC Motor Data

Model	P2	Phase	FLA	Voltage
	[HP]	[-]	[A]	[V]
IPL 1.5-38/90-2	.75	1	9.4 / 4.9 - 4.7	115 / 208-230
	1	1	15 / 7.9 - 7.5	115 / 208-230
IPL 1.5-46/96-2	1	3	3.7-3.6/1.8	208-230/460
	1	3	1.2	575
IPL 1.5-59/100-2	1.5	1	16 / 8	115 / 208-230
	1.5	3	4.9 - 4.6 / 2.3	208-230 / 460
	1.5	3	1.8	575

WILO USA LLC

Tel: (866) 945-6872 Web: www.wilo-usa.com
 Fax: (708) 338-9455 Email: info@wilo-usa.com

WILO Canada Inc.

Tel: (866) 945-6236 Web: www.wilo-canada.com
 Fax: (403) 277-9456 Email: info@wilo-canada.com

WILO Mexico

Tel: +52 55 5586 3209 Web: www.wilo-mexico.com.mx
 Fax: +52 1 55 5413 4165 Email: info@wilo.com.mx

Submittal Data Sheet

Wilco IPL - Inline Centrifugal Circulators

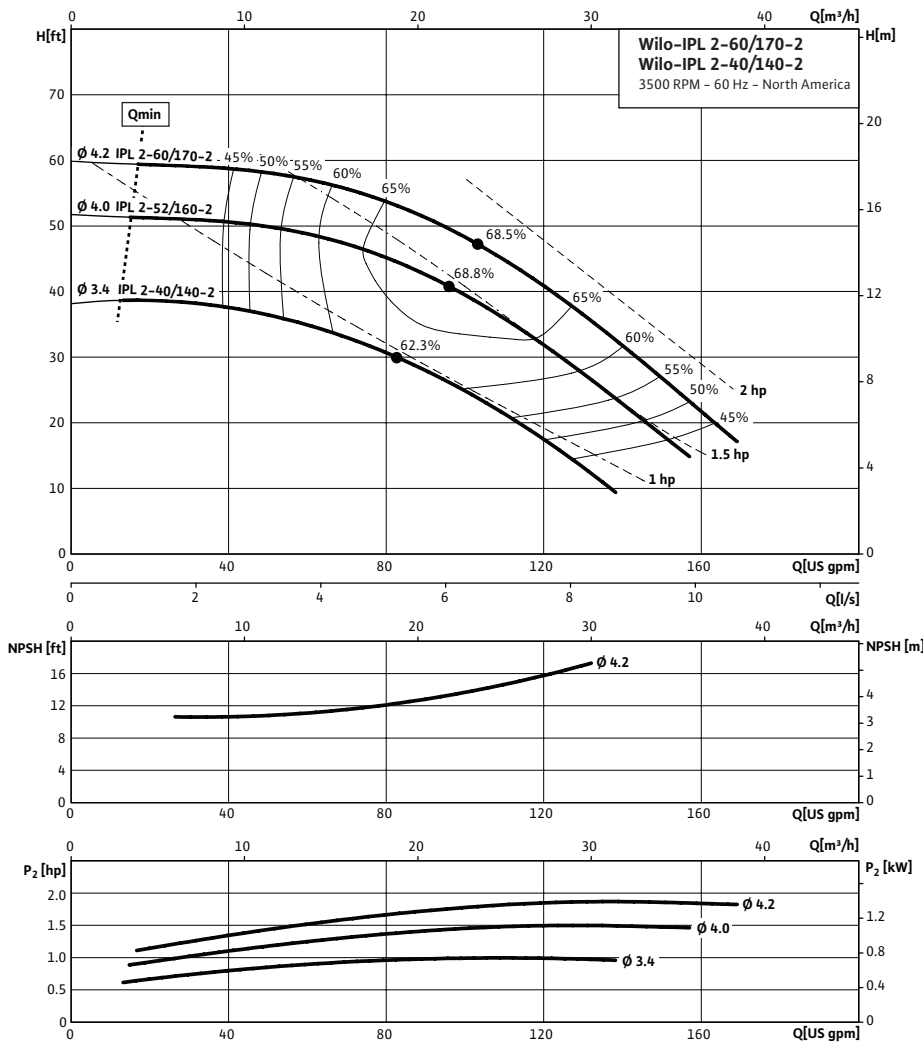


Wilco IPL 2 3500 RPM



Project:	
Engineer:	
Contractor:	
Submitted By:	Date:
Approved By:	Date:

Tag #	Model #	Flow	Head	HP	Cycle	Phase	Voltage	RPM
					60Hz			3,500 (2 Pole)



Technical Data	
Temp Range:	15 °F to + 250 °F (-10 °C to +120 °C)
Power Supply	1~115 / 208-230 V, 60 Hz 3~208-230 / 460 V, 60 Hz 3~575 V, 60 Hz
Motor Options	TEFC, (ODP Opt), EPACT Rated
Flange Connection	2" with ¼" pressure gauge tappings
Max operating pressure:	145 PSI (10 Bar)

Materials of Construction	
Pump volute	Cast Iron
Impeller	Engineered composite
Shaft	316L stainless steel stub shaft
Mechanical seal	Q1Q1X4GG (silicium carbide seal faces, HNBR elastomers)

Applications	
• Hot water heating systems	• Industrial circulation systems
• Air conditioning systems	• Solar Systems
• Closed cooling circuits	• Geothermal Systems

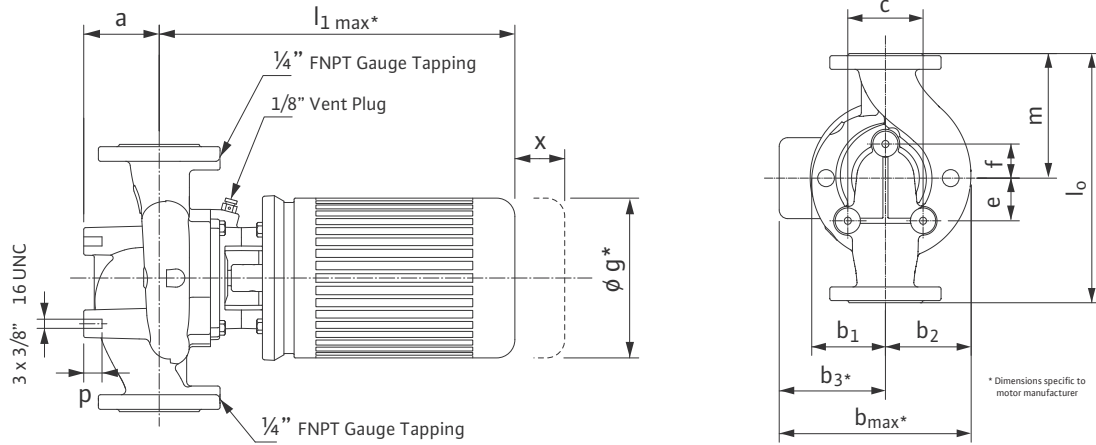
Approval Stamp

Submittal Data Sheet

Wilo IPL - In-line Centrifugal Circulators



Dimensions & Weights

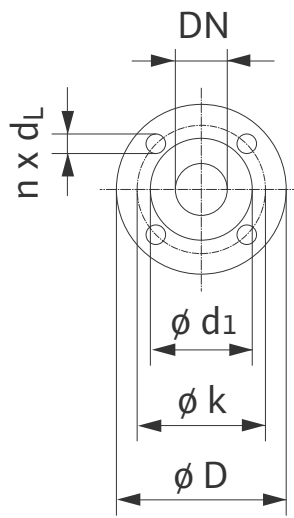


Dimensions and Weights

Dimensions—inches (mm)													Weight			
Model	Dia.	a	l ₁	b ₁	b ₂	b ₃	b _{max}	c	e	f	g	l ₀	m	p	x	
IPL 2-40/140-2	2	3 1/4	17 7/8	3 1/2	4 1/16	5 1/4	8 3/4	3 9/16	1 9/16	1 15/16	7	11 1/2	5 3/4	1 3/16	5 7/8	65.7 lbs
	(50)	(83)	(454)	(88)	(103)	(133)	(222)	(90)	(40)	(50)	(178)	(292)	(146)	(20)	(56)	29.8 kg
IPL 2-52/160-2	2	3 1/4	17 7/8	3 1/2	4 1/16	5 1/4	8 3/4	3 9/16	1 9/16	1 15/16	7	11 1/2	5 3/4	1 3/16	5 7/8	66.1 lbs
	(50)	(83)	(454)	(88)	(103)	(133)	(222)	(90)	(40)	(50)	(178)	(292)	(146)	(20)	(56)	30 kg
IPL 2-60/170-2	2	3 1/4	17 7/8	3 1/2	4 1/16	5 1/4	8 3/4	3 9/16	1 9/16	1 15/16	7	11 1/2	5 3/4	1 3/16	5 7/8	77.2 lbs
	(50)	(83)	(454)	(88)	(103)	(133)	(222)	(90)	(40)	(50)	(178)	(292)	(146)	(20)	(56)	35 kg

Flange Dimensions

Dimensions - Inches (mm)				
DN	øD	ød ₁	øk	n x d _L
2	5 1/4	3 7/16	3 1/2	4 x 9/16
	(133)	(87)	(102)	(4 x 14)



TEFC Motor Data

Model	P2	Phase	FLA	Voltage
	[HP]	[-]	[A]	[V]
IPL 2-40/140-2	1	1	15 / 7.9 - 7.5	115 / 208-230
	1	3	3.7 - 3.6 / 1.8	208-230 / 460
	1	3	1.2	575
IPL 2-52/160-2	1.5	1	16 / 8	115 / 208-230
	1.5	3	4.9 - 4.6 / 2.3	208-230 / 460
	1.5	3	1.8	575
IPL 2-60/170-2	2	1	24 / 12.6 - 12	115 / 208-230
	2	3	6.2 - 5.8 / 2.9	208-230 / 460
	2	3	2.3	575

WILO USA LLC

Tel: (866) 945-6872 Web: www.wilo-usa.com
 Fax: (708) 338-9455 Email: info@wilo-usa.com

WILO Canada Inc.

Tel: (866) 945-6236 Web: www.wilo-canada.com
 Fax: (403) 277-9456 Email: info@wilo-canada.com

WILO Mexico

Tel: +52 55 5586 3209 Web: www.wilo-mexico.com.mx
 Fax: +52 1 55 5413 4165 Email: info@wilo.com.mx

Submittal Data Sheet

Wilo IPL - Inline Centrifugal Circulators

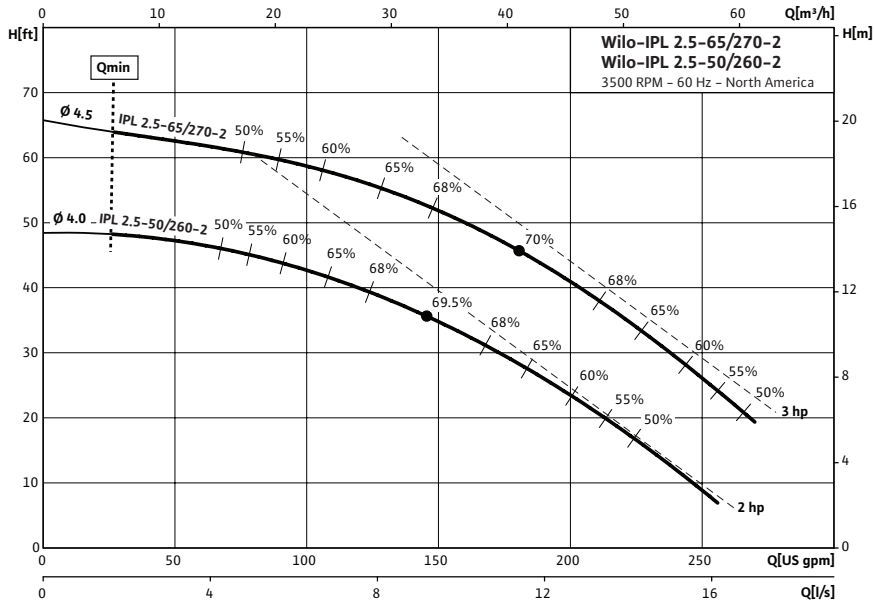


Wilo IPL 2.5 3500 RPM



Project:	
Engineer:	
Contractor:	
Submitted By:	Date:
Approved By:	Date:

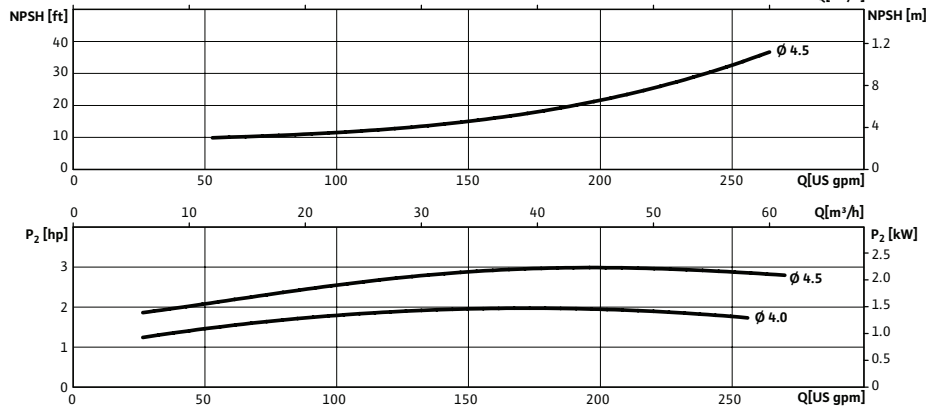
Tag #	Model #	Flow	Head	HP	Cycle	Phase	Voltage	RPM
					60Hz			3,500 (2 Pole)



Technical Data	
Temp Range:	15 °F to +250 °F (-10 °C to +120 °C)
Power Supply	1~115 / 208-230 V, 60 Hz 3~208-230 / 460 V, 60 Hz 3~575 V, 60 Hz
Motor Options	TEFC, (ODP Opt), EPACK Rated
Flange Connection	2½" with ¼" pressure gauge tappings
Max operating pressure:	145 PSI (10 Bar)

Materials of Construction	
Pump volute	Cast Iron
Impeller	Engineered composite
Shaft	316L stainless steel stub shaft
Mechanical seal	Q1Q1X4GG (silicium carbide seal faces, HNBR elastomers)

Applications	
• Hot water heating systems	• Industrial circulation systems
• Air conditioning systems	• Solar Systems
• Closed cooling circuits	• Geothermal Systems



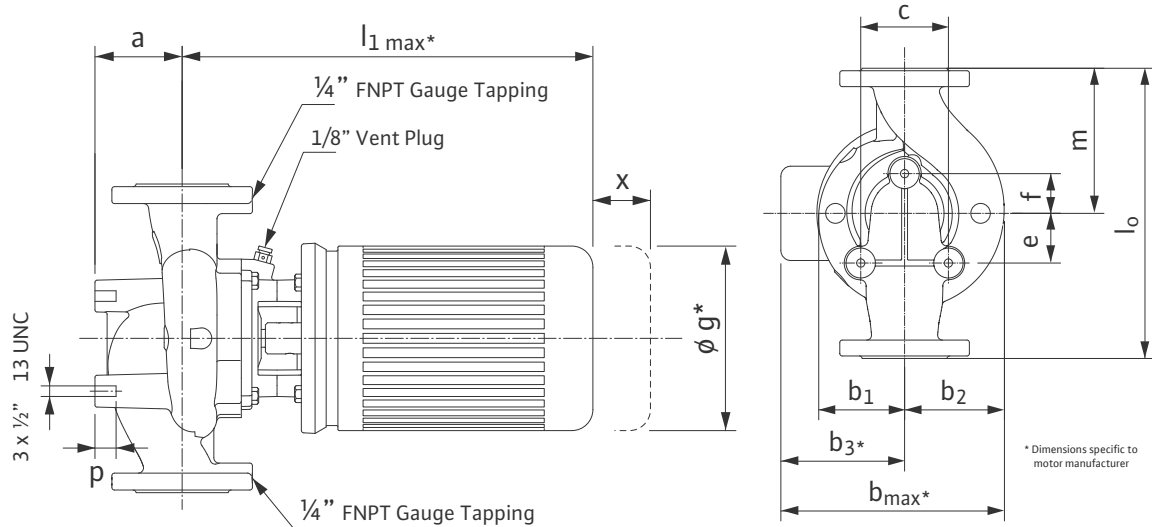
Approval Stamp

Submittal Data Sheet

Wilo IPL - In-line Centrifugal Circulators



Dimensions & Weights

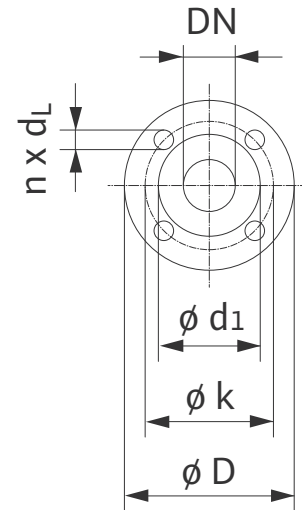


Dimensions and Weights

Model	Dimensions—inches (mm)															Weight
	Dia	a	l ₁	b ₁	b ₂	b ₃	b _{max}	c	e	f	g	l ₀	m	p	x	
IPL 2.5-50/260-2	2½	3⅝	18	3⅞	4 ^{11/16}	5¾	9⅝	4⅜	1 ^{9/16}	1 ^{15/16}	7	13½	6¾	1	5 ^{7/8}	91.2 lbs
	(65)	(93)	(458)	(99)	(119)	(146)	(245)	(104)	(40)	(50)	(178)	(343)	(171)	(25)	(67)	41.4 kg
IPL 2.5-65/270-2	2½	3⅝	18	3⅞	4 ^{11/16}	5¾	9⅝	4⅜	1 ^{9/16}	1 ^{15/16}	7	13½	6¾	1	5 ^{7/8}	86.7 lbs
	(65)	(93)	(458)	(99)	(119)	(146)	(245)	(104)	(40)	(50)	(178)	(343)	(171)	(25)	(67)	39.4 kg

Flange Dimensions

Dimensions - Inches (mm)				
DN	øD	ød ₁	øk	n x d _L
2.5	7	4⅝	5½	4 X ¾
	(178)	(118)	(140)	(4 x 19)



TEFC Motor Data

Model	P2	Phase	FLA	Voltage
	[HP]	[-]	[A]	[V]
IPL 2.5-50/260-2	2	1	24 / 12.6 - 12	115 / 208-230
	2	3	6.2 - 5.8 / 2.9	208-230 / 460
	2	3	2.3	575
IPL 2.5-65/270-2	3	3	8.5 - 8 / 4	208-230 / 460
	3	3	3	575

WILO USA LLC

Tel: (866) 945-6872 Web: www.wilo-usa.com
 Fax: (708) 338-9455 Email: info@wilo-usa.com

WILO Canada Inc.

Tel: (866) 945-6236 Web: www.wilo-canada.com
 Fax: (403) 277-9456 Email: info@wilo-canada.com

WILO Mexico

Tel: +52 55 5586 3209 Web: www.wilo-mexico.com.mx
 Fax: +52 1 55 5413 4165 Email: info@wilo.com.mx

Submittal Data Sheet

Wilo IPL - Inline Centrifugal Circulators

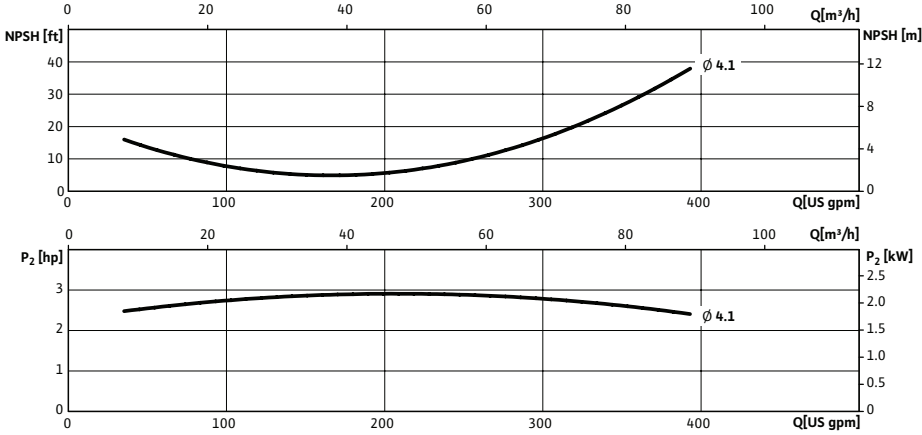
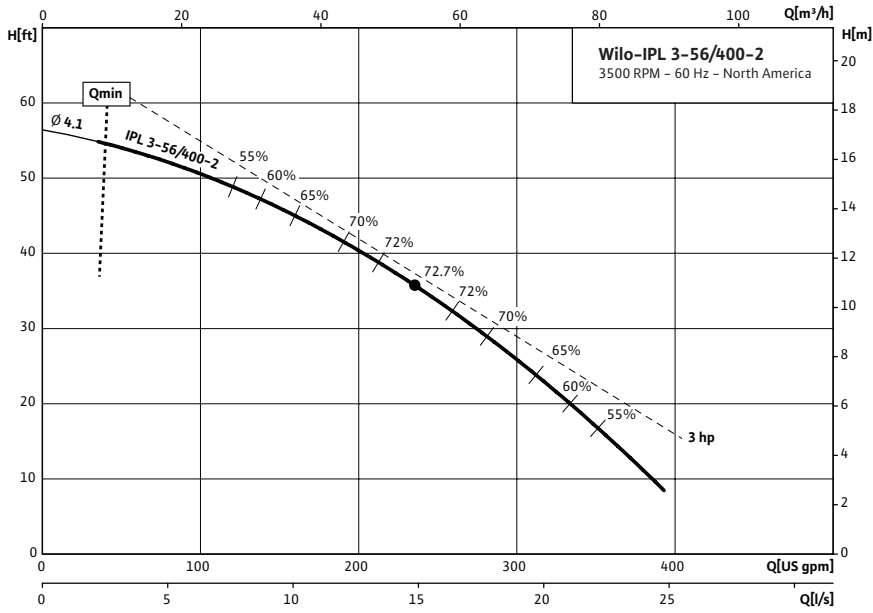


Wilo IPL 3 3500 RPM



Project:	
Engineer:	
Contractor:	
Submitted By:	Date:
Approved By:	Date:

Tag #	Model #	Flow	Head	HP	Cycle	Phase	Voltage	RPM
	IPL 3-56/400-2				60Hz			3,500 (2 Pole)



Technical Data	
Temp Range:	15 °F to + 250 °F (-10 °C to +120 °C)
Power Supply	3~208-230 / 460 V, 60 Hz 3~575 V, 60 Hz
Motor Options	TEFC, (ODP Opt), EPACK Rated
Flange Connection	3" with 1/4" pressure gauge tappings
Max operating pressure:	145 PSI (10 Bar)

Materials of Construction	
Pump volute	Cast Iron
Impeller	Engineered composite
Shaft	316L stainless steel stub shaft
Mechanical seal	Q1Q1X4GG (silicium carbide seal faces, HNBR elastomers)

- | Applications | |
|-----------------------------|----------------------------------|
| • Hot water heating systems | • Industrial circulation systems |
| • Air conditioning systems | • Solar Systems |
| • Closed cooling circuits | • Geothermal Systems |

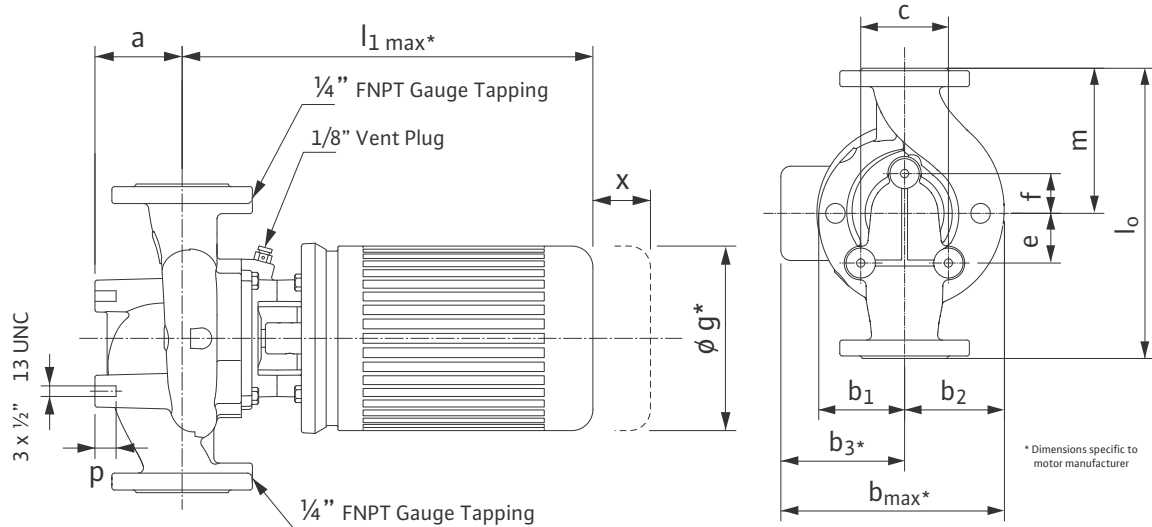
Approval Stamp

Submittal Data Sheet

Wilo IPL - In-line Centrifugal Circulators



Dimensions & Weights

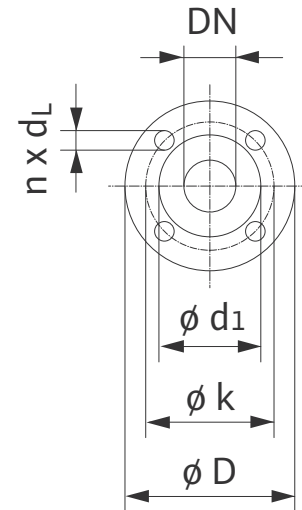


Dimensions and Weights

Model	Dimensions-inches (mm)															Weight
	Dia	a	l_1	b_1	b_2	b_3	b_{max}	c	e	f	g	l_0	m	p	x	
IPL 3-56/400-2	3	$3^{15/16}$	$18^{3/8}$	$4\frac{1}{4}$	$5^{5/16}$	$5\frac{3}{4}$	10	$5^{5/16}$	$1\frac{9}{16}$	$2\frac{3}{16}$	7	14	7	1	$5\frac{7}{8}$	97.7 lbs
	(80)	(100)	(460)	(108)	(135)	(146)	(254)	(135)	(40)	(55)	(178)	(356)	(178)	(25)	(69)	44.4 kg

Flange Dimensions

Dimensions - Inches (mm)				
DN	ϕD	ϕd_1	ϕk	$n \times d_L$
3	$7\frac{1}{2}$	$5\frac{1}{8}$	6	$4 \times \frac{3}{4}$
	(191)	(130)	(152.4)	(4 x 19)



TEFC Motor Data

Model	P2	Phase	FLA	Voltage
	[HP]	[-]	[A]	[V]
IPL 3-56/400-2	3	3	$8.5 - 8\frac{1}{4}$	208-230/460
	3	3	3	575

WILO USA LLC

Tel: (866) 945-6872 Web: www.wilo-usa.com
 Fax: (708) 338-9455 Email: info@wilo-usa.com

WILO Canada Inc.

Tel: (866) 945-6236 Web: www.wilo-canada.com
 Fax: (403) 277-9456 Email: info@wilo-canada.com

WILO Mexico

Tel: +52 55 5586 3209 Web: www.wilo-mexico.com.mx
 Fax: +52 1 55 5413 4165 Email: info@wilo.com.mx