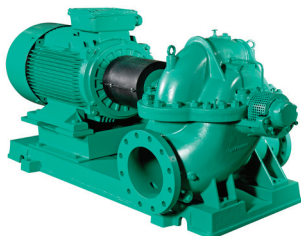


Submittal Data Sheet

Wilo SCP – Horizontal Split Case Pumps

WILO

SCP 14 x 12 x 19 HA



Project:

Engineer:

Contractor:

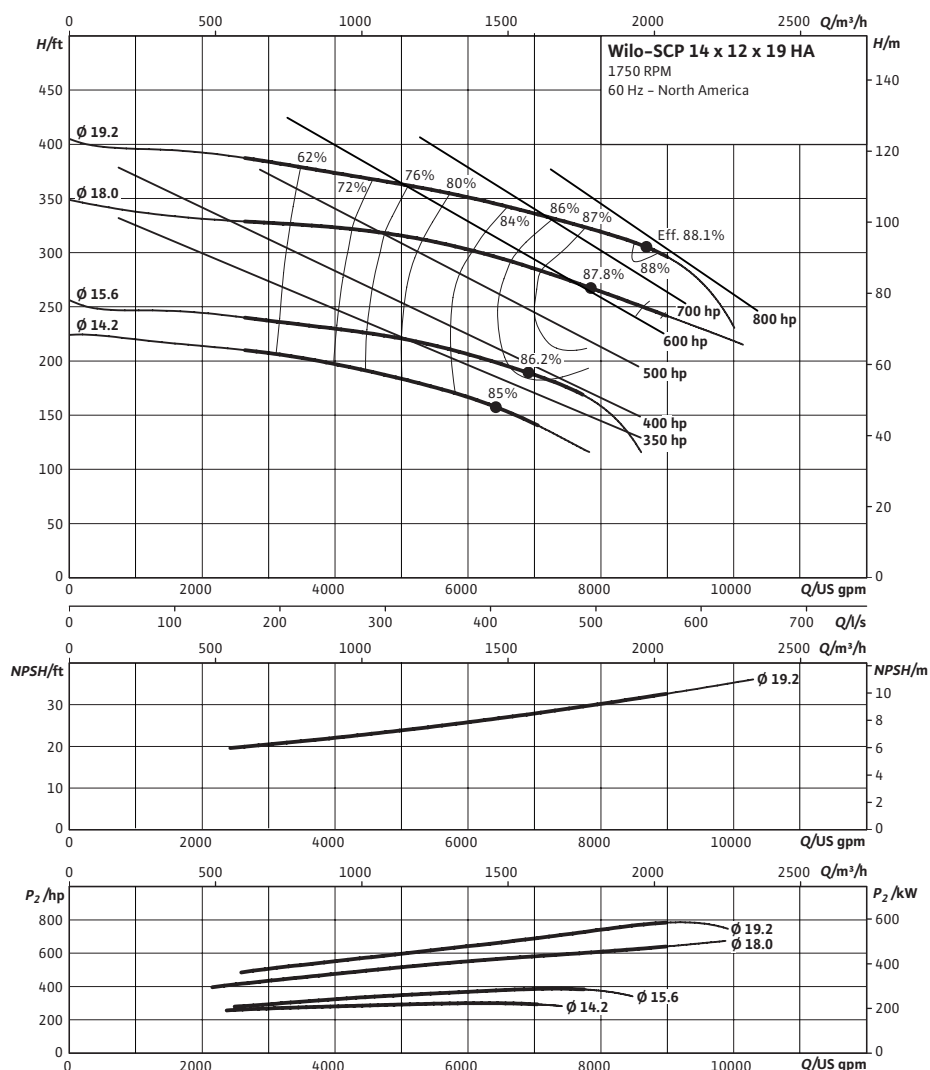
Submitted By:

Date:

Approved By:

Date:

Tag #	Model #	Flow (USGPM)	Head (Feet)	HP	Enclosure TEFC/ODP	Frame	Cycle	Phase	Voltage	RPM
	SCP 14 x 12 x 19 HA						60 Hz	3		



Technical Data

Approved Fluids

Heating Water

Cooling and cold water

Water-Glycol mixtures (for 20–40% glycol and fluid temp $\leq 104^\circ F [40^\circ C]$)

Fluid Temperature

Mechanical Seal 18°F to 250°F (–8°C to 120°C)

Stuffing Box Packing 18°F to 220°F (–8°C to 105°C)

Materials of Construction

<input type="checkbox"/> Pump Housing	A48 Class 35
<input type="checkbox"/> Pump Housing (Optional)	Ni-resist BS 3468 Gr 2 / BS 2789 500.1
<input type="checkbox"/> Impeller	BS 84 C83 600
<input type="checkbox"/> Impeller (optional)	A48 Class 35 / BS 84 C83 600
<input type="checkbox"/> Stationary Wear Rings	BS 84 C93 700
<input type="checkbox"/> Pump Shaft	A276 type 410
<input type="checkbox"/> Pump Shaft (optional)	BS 970 316 S16
<input type="checkbox"/> Mechanical Seal	Carbon/silicon carbide/EPDM (E1)
<input type="checkbox"/> Other Mechanical Seals	Avail. on request
<input type="checkbox"/> Additional Spacer Coupling	Avail. on request

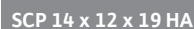
☐ Other:

Approval Stamp

Wilo SCP – Horizontal Split Case Pumps



Single Stage Pump



Dimensions – Inches (mm)

Flange Dimensions – Suction Side

Dimensions – Inches (mm)

Flange Dimensions – Discharge Side

Dimensions – Inches (mm)

Technical drawing of a circular flange. The drawing includes a side view (left) and a top view (right). The side view shows a flange with a total thickness of b , an outer diameter of ϕD , and an inner diameter of ϕd . The top view shows a circular flange with an outer diameter of ϕD , an inner diameter of ϕd , and a nominal diameter of DN . The flange has n holes, each with a diameter of ϕD_2 , arranged in a circle. The holes are represented by circles with a cross inside. The drawing is labeled with dimensions and symbols: ϕD , ϕd , DN , b , and $n \times \phi D_2$.