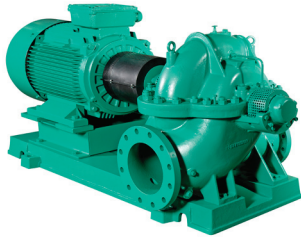


Submittal Data Sheet

Wilo SCP – Horizontal Split Case Pumps



SCP 2½ x 2 x 8½ HA



Project:

Engineer:

Contractor:

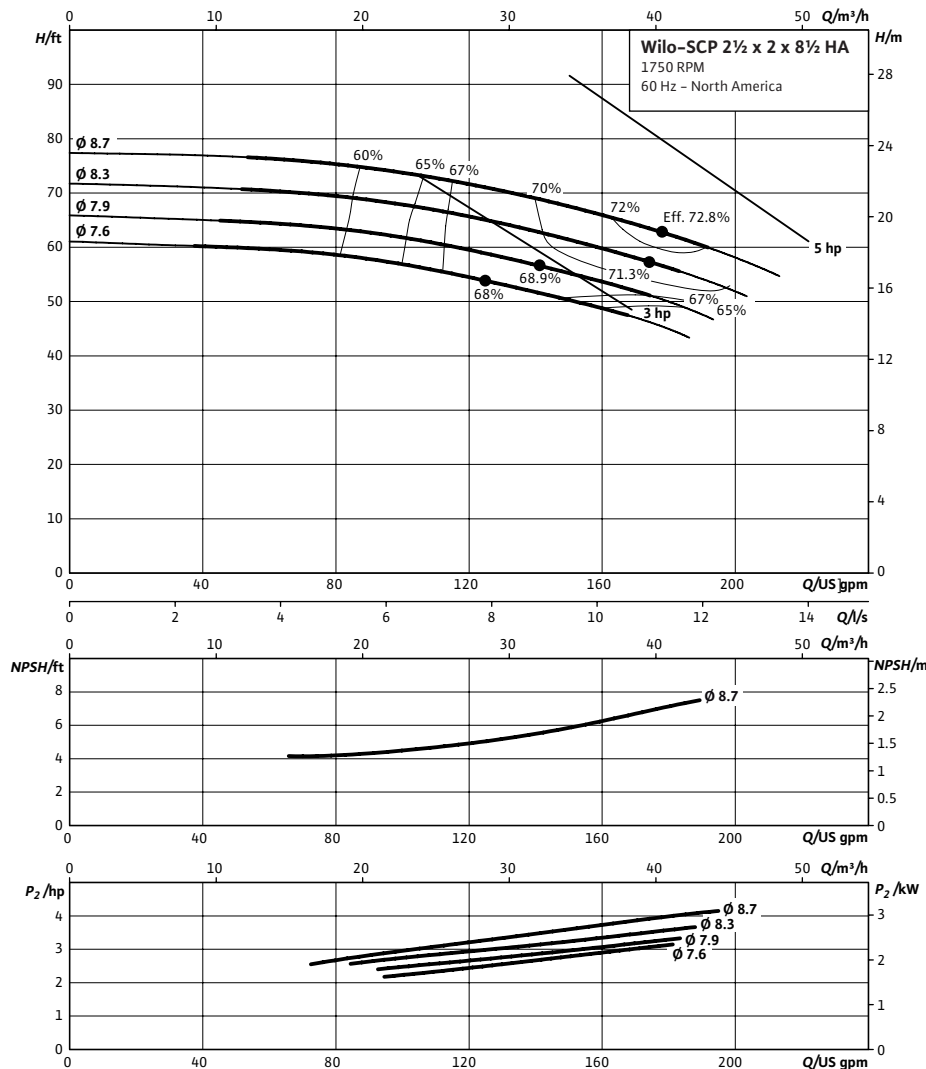
Submitted By:

Date:

Approved By:

Date:

Tag #	Model #	Flow (USGPM)	Head (Feet)	HP	Enclosure TEFC/ODP	Frame	Cycle	Phase	Voltage	RPM
	SCP 2½ x 2 x 8½ HA						60 Hz	3		



Technical Data

Approved Fluids

Heating Water

Cooling and cold water

Water-Glycol mixtures (for 20–40% glycol and fluid temp ≤ 104°F [40°C])

Fluid Temperature

Mechanical Seal 18°F to 250°F (–8°C to 120°C)

Stuffing Box Packing 18°F to 220°F (–8°C to 105°C)

Materials of Construction

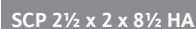
<input type="checkbox"/> Pump Housing	A48 Class 35
<input type="checkbox"/> Pump Housing (Optional)	Ni-resist BS 3468 Gr 2 / BS 2789 500.1
<input type="checkbox"/> Impeller	BS 84 C83 600
<input type="checkbox"/> Impeller (optional)	A48 Class 35 / BS 84 C83 600
<input type="checkbox"/> Stationary Wear Rings	BS 84 C93 700
<input type="checkbox"/> Pump Shaft	A276 type 410
<input type="checkbox"/> Pump Shaft (optional)	BS 970 316 S16
<input type="checkbox"/> Mechanical Seal	Carbon/silicon carbide/EPDM (E1)
<input type="checkbox"/> Other Mechanical Seals	Avail. on request
<input type="checkbox"/> Additional Spacer Coupling	Avail. on request
<input type="checkbox"/> Other:	

Approval Stamp

Wilo SCP – Horizontal Split Case Pumps



Single Stage Pump



Dimensions – Inches (mm)

Frame	a	L	I	L5	L2	L3	L4	LM	LP	H1	H2	HO	Ht	n	Ød	S1	S2	S3	S4	S5	SL	P5	P6
182T	.50 (13)	38.94 (989)	13.38 (340)	10.06 (256)	11.81 (300)	7.50 (191)	5.88 (149)	16.50 (419)	21.88 (556)	7.88 (200)	5.63 (143)	18.00 (457)	7.50 (191)	4	.91 (23)	.94 (24)	4.00 (102)	22.75 (578)	9.44 (240)	11.00 (279)	30.75 (781)	-	-
184T	.50 (13)	38.94 (989)	13.38 (340)	10.06 (256)	11.81 (300)	7.50 (191)	5.88 (149)	16.50 (419)	21.88 (556)	7.88 (200)	5.63 (143)	18.00 (457)	7.50 (191)	4	.91 (23)	.94 (24)	4.00 (102)	22.75 (578)	9.44 (240)	11.00 (279)	30.75 (781)	-	-

Flange Dimensions – Suction Side

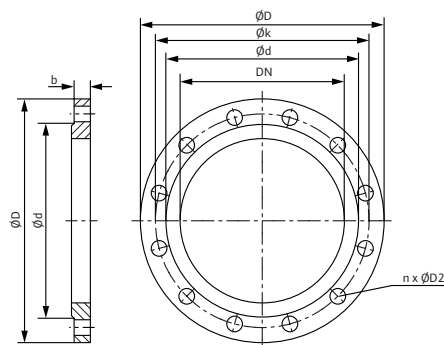
Dimensions – Inches (mm)

DN S #125	ØD	Ød	Øk	b	n	D2
2½	7.00 (178)	4.13 (105)	5.50 (140)	.88 (22)	4	.75 (19)

Flange Dimensions – Discharge Side

Dimensions – Inches (mm)

DND 125#	ØD	Ød	Øk	b	n	D2
2	6.00 (152)	3.63 (92)	4.75 (121)	.75 (19)	4	.75 (19)



Tel: +52 55 5586 3209 Web: www.wilo-mexico.com.mx
Fax: +52 1 55 5413 4165 Email: info@wilo.com.mx