

Submittal

Baseboard Radiation

Specification

ENCLOSURE:

STYLE : "Petite•7"

 COLOR: White

 FRONT: 24 Ga. Roll Formed
 Prepainted

 Steel

BACKPLATE: 24 Ga. Roll Formed
 Prepainted Steel

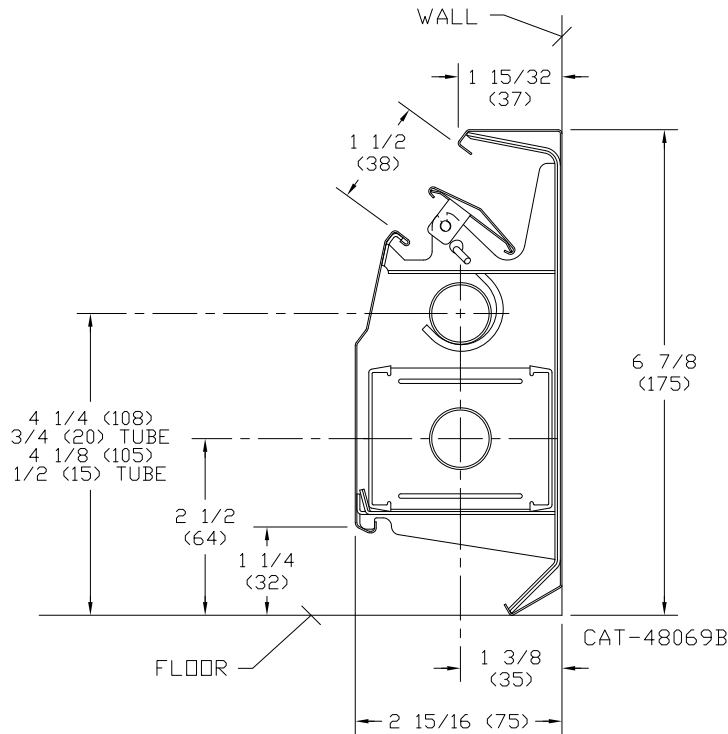
DAMPER VANE: Roll Formed
 Prepainted Steel

ELEMENT:
 TYPE: Cu/Al Mechanically
 Expanded
 Flared One End

BRACKETS: Die Formed 18 Ga.
 Prepainted Steel

SLIDE SHOES: High Temperature
 Nylon Snap On
 Front and Back

ACCESSORIES: All overlapping
 with Snap Fit and
 Baked Enamel Finish



NOTE: DIMENSIONS IN "()" ARE
 SHOWN IN MILLIMETERS.

RATINGS



Flow Rate GPM	Average Hot Water Temperature °F - BTU/Hr./Lin. Ft.																		
	P75A Assembly with 1/2" Element																		
	150°	155°	160°	165°	170°	175°	180°	185°	190°	195°	200°	205°	210°	215°	220°	225°	230°	235°	240°
4	420	450	490	520	560	590	620	660	690	730	760	790	820	870	900	930	960	990	1040
1	400	430	460	490	530	560	590	620	650	690	720	750	780	820	850	880	910	940	980
	P77A Assembly with 3/4" Element																		
4	410	440	480	510	540	570	600	630	670	700	730	760	800	840	870	900	930	960	990
1	390	420	450	480	510	540	570	600	630	660	690	720	760	790	820	850	880	910	940

Petite

260 North Elm St., Westfield, MA 01085
 (413) 564-5545 Fax: (413) 572-3764
 www.sterlingheat.com

03/08



A MESTEK COMPANY

PROJECT: _____ DATE: _____

LOCATION: _____

ARCHITECT: _____

ENGINEER: _____

CONTRACTOR: _____

PO NUMBER: _____

PETITE•7

Submittal

Baseboard Radiation

Specification

Furnish and install where shown on all plans/drawings, Petite•7 Finned Tube Enclosure and Elements as described or approved equal of both quality and BTU capacity. Ratings are to be I=B=R approved.

The baseboard panel radiator enclosure, as called out Petite•7, will be manufactured from 24 gauge pre-painted bonderized C.R.S. All lateral bends are to be roll formed to ensure continuity of all adjoining enclosures and accessories. The enclosure lengths are to be provided in 12 inch increments from 2 feet through 8 feet long and 10 foot lengths. The front panel is to be fully engaged onto mounting brackets engaged with the back panel. Splice plate and damper joiner are to be used where two pieces of enclosure are adjoining each other in a run. These are to be included with all 5', 6' and 8' assembly packages.

All accessories will be die formed cold rolled steel and finished with a baked enamel finish. The accessories will overlap the installed enclosure and are to provide adjustment for make-up in the installed runs of enclosure. The accessories will extend to the floor. The accessories are to be enclosure height.

The brackets are to be of a one piece, die formed construc-

tion. The material is to be 18 gauge pre-painted bonderized C.R.S. The bracket is to be self locating for vertical positioning at installation. The bottom horizontal leg is to snap into bottom bend of the enclosure and is to support the element where slide shoes are located. Two high temperature nylon snap-on slide shoes are to be placed at the front and rear of element to prevent contact between fin and enclosure during expansion and contractions.

All elements are to be of the mechanically expanded type to ensure that proper fin to tube bonding is maximized. Copper/Aluminum elements are to be provided with one end mechanically swaged (flared) for proper assembly.

In the interest of product improvement, we reserve the right to make changes without notice.