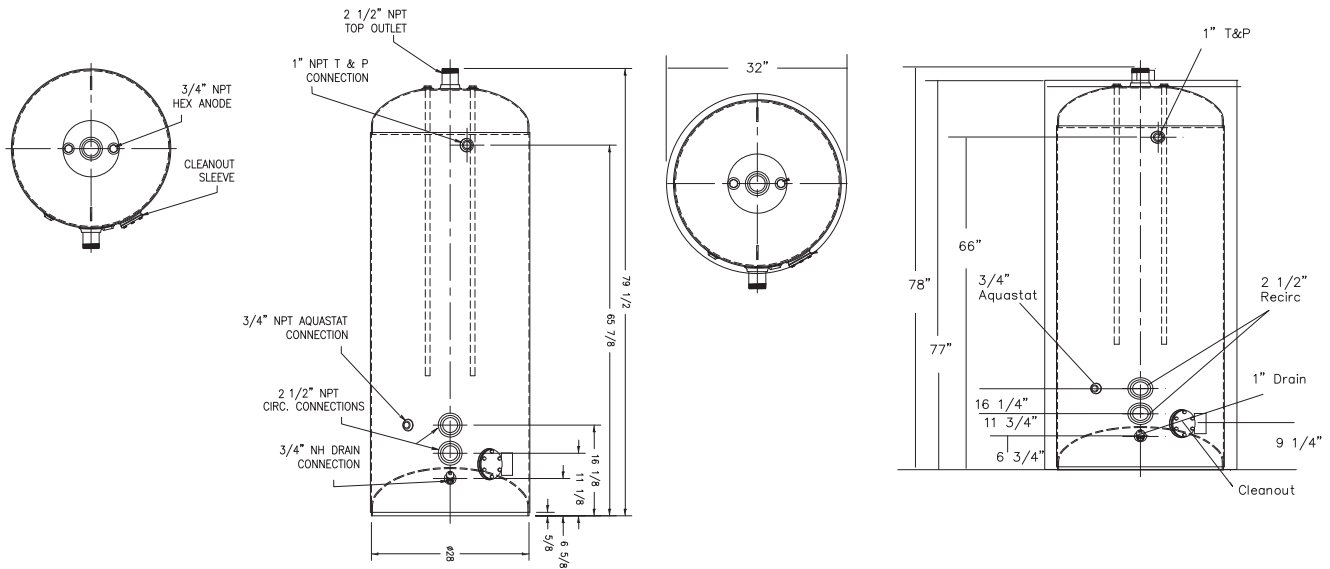




SUBMITTAL SHEET

Type: Vertical Glass Lined Storage Tanks
Models: 200 Gallon Bare and Jacketed



NOTE: Tanks shown are rated for 150 M.A.W.P.

Typical Specification for RBI Bare Storage Tank

The STORAGE TANK shall be a RBI bare tank, Model _____ with vertical construction and having a storage capacity of _____ gallons. Vertical tanks will have a 6" skirt.

The STORAGE TANK shall be constructed of carbon steel in accordance with standard ASME Boiler and Pressure Vessel Code requirements, (if ASME – the storage tank will be stamped and registered with the National Board of Boiler and Pressure Vessel Inspectors). The tank shall be furnished with the following connections:

- Four 2 1/2" NPT circulating connections
- One 2 1/2" NPT hot water outlet
- One 1" NPT relief valve connection
- Two 3/4" NPT aquastat openings
- One 1" NPT drain connection

The STORAGE TANK shall have a working pressure of 150 PSI. The interior of the STORAGE TANK shall be glass lined and fired to 1500°F / 816°C to ensure a molecular fusing of glass and steel, furnished with magnesium anodes and carry a five (5) year limited warranty. Exterior shall be Red Oxide Primer.

The tank dimensions shall be _____" wide, _____" deep and _____" high.



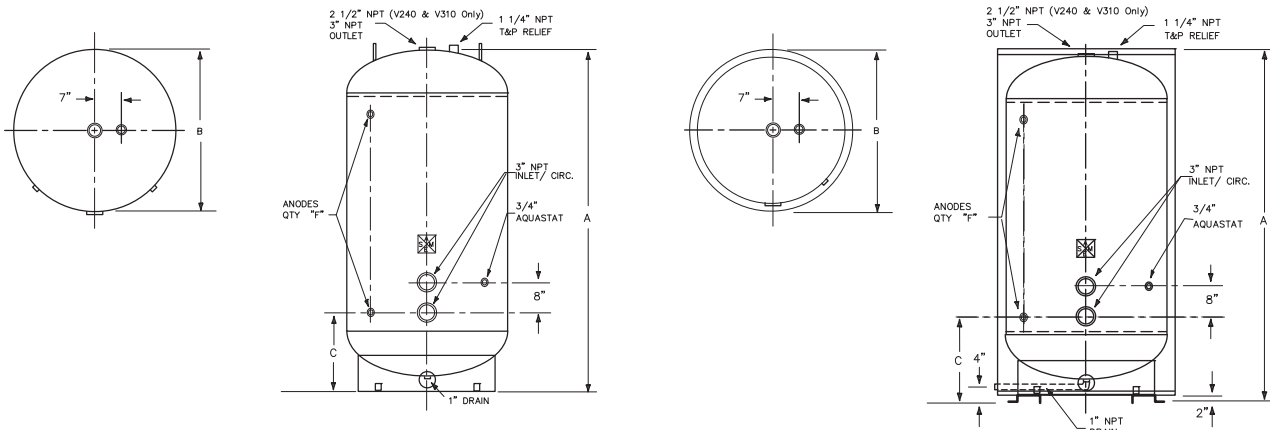
260 North Elm Street • Westfield, MA 01085
 Phone: (413) 568-9571 • Fax: (413) 568-9613

7555 Tranmere Drive • Mississauga, Ontario L5S 1L4 Canada
 Phone: (905) 670-5888 • Fax: (905) 670-5782



SUBMITTAL SHEET

Type: Vertical Glass Lined Storage Tanks
Models: 240-860 Gallon Bare and Jacketed



STORAGE TANKS – BARE — DIMENSIONS					
Model	"A"	"B"	"C"	"F"	Weight (lbs.)
V240B	89"	30"	17-1/2"	2	383
V310B	82"	36"	19"	2	527
V435B	85"	42"	20-1/2"	2	695
V505B	97"	42"	20-1/2"	3	779
V675B	100"	48"	22"	3	1,173
V860B	124"	48"	22"	3	1,428

NOTE:
Tanks shown are rated for 125 M.A.W.P.

STORAGE TANKS – JACKETED — DIMENSIONS					
Model	"A"	"B"	"C"	"F"	Weight (lbs.)
V240J	93"	34"	19-1/2"	2	539
V310J	86"	40"	21"	2	710
V435J	89"	46"	22-1/2"	2	917
V505J	101"	46"	22-1/2"	3	1,017
V675J	104"	52"	24"	3	1,456
V840J	128"	52"	24"	3	1,748

Typical Specification for RBI Jacketed & Insulated Storage Tank

The STORAGE TANK shall be a RBI, Model _____ with vertical construction and having a storage capacity of _____ gallons and equipped with a steel skirt and constructed of carbon steel in accordance with standard ASME Boiler and Pressure Vessel Code requirements. The STORAGE TANK will be stamped and registered with the National Board of Boiler and Pressure Vessel Inspectors. Tanks shall be internally lined with ULTONIUM™ premium enamel coating per ASME HLW Code procedures. The STORAGE TANK will be hydrostatically tested for 125 PSI (150 PSI) working pressure. Tanks shall include the following:

- Two (2) lifting lugs
- Four (3) 3" NPT fittings
- One (1) 1" drain
- One (1) 1 1/4" T&P Relief fitting
- Two (2) NPT fittings for aqua-stats

Tanks shall be externally prime coated with red oxide primer. Tanks shall be furnished with anodes designed for maximum cathode protection.

Ultonium™ Glass lining to be applied in ambient room temperatures to a wet thickness of 24 mils to a sandblasted, white metal surface then cured in a drying oven at 400°F / 204°C. All threaded fittings are to be wired brushed clean before the firing process. Firing of the vessel is to be done at 1530°F / 832°C for a period of time which will allow the Ultonium™ to liquefy and bond to the steel substrate.

Insulation shall be sprayed-on rigid polyurethane insulation with acrylic topcoat which exceeds ASHRAE 90.1 requirements. Spray foam insulation to have a class I foam rating with less than a 25-flame spread rating suitable for boiler room applications. Insulation shall be applied at the factory at room temperature directly to the tank in a 2 step application process with 2.25" of foam added per application with a total insulation value to be R-16.

Jacketed and insulated tanks are to have an open cell 2 part rigid insulation sprayed into a 2" cavity surrounding the storage tank. The foam insulation meets ASHRAE 90.1 requirements with an insulation value of R-12.5. The steel jacket is to be 24 gauge steel, painted on both sides with a baked-on enamel coating.

The STORAGE TANK is to be equipped with a sparge tube constructed with heavy gauge stainless steel and designed with "clam shell" type openings along the bottom of the tube. The "clam shell" openings will have a 30% more combined volume than the sparge tube which will allow the incoming water to slow and gently enter the tank maintaining temperature stratification.

Tanks shall have a minimum 5-year warranty, which shall cover the replacement of the tank. If the tank should leak labor and installation costs are excluded.

The jacket dimensions shall be _____" wide, _____" deep and _____" high.