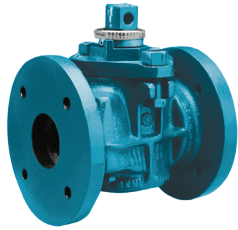


Submittal Data Sheet

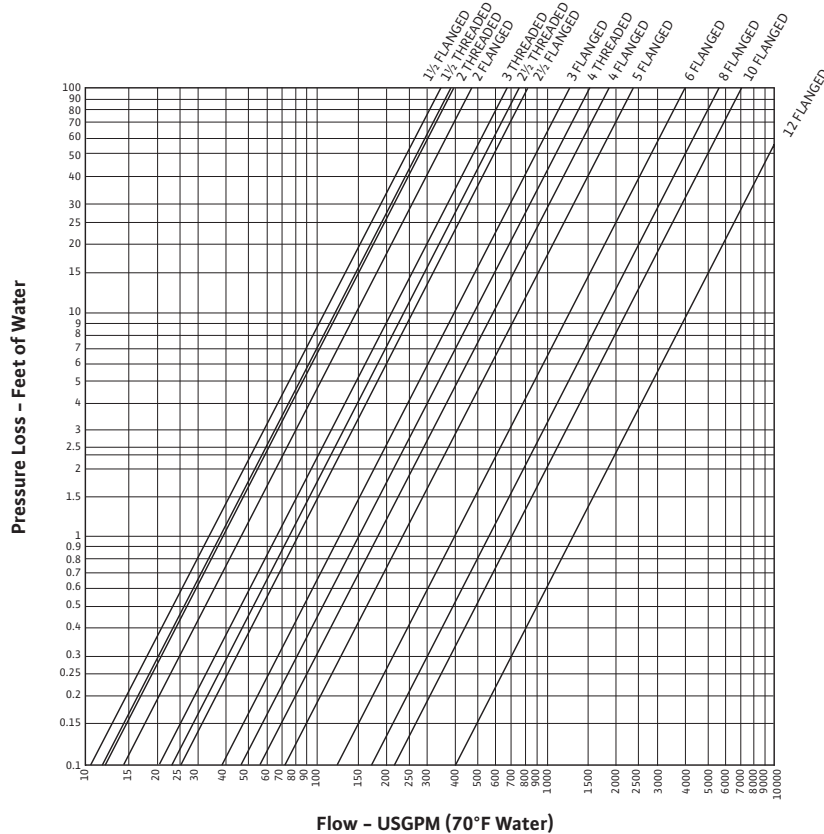
Wilco TDV - Triple Duty Valves / Triple Service Valves



Wilco TDV



Project:	
Engineer:	
Contractor:	
Submitted By:	Date:
Approved By:	Date:



Operating Limits

Approved Fluids	
Heating Water	
Cooling and cold water	
Maximum Operating Temperature	
250°F	(120°C)
Maximum Working Pressure	
175 psig	(12 bar)

Materials of Construction

Body (1½" - 2½") Body (3" - 12")	Cast Iron ASTM A126 / DI A536 Ductile Iron 60-40-18
Metering Connector	Brass
Clapper Seal	Buna
Clapper (1½" - 2½") Clapper (3" - 12")	Cast Iron 304 SS
Spring	Stainless Steel
Clapper Pin	Stainless Steel
Pipe Plug	Steel
Plug (1½" - 2½") Plug (3" - 12")	Cast Iron ASTM A126 / DI A536 Ductile Iron (60-40-18) ENP (2mil)
Cover (1½" - 2½") Cover (3" - 12")	Cast Iron ASTM A126 / DI A536 Ductile Iron (60-40-18)
O-Rings	Buna
Cover Stud	Steel
Nut	Steel
Memory Stop	Steel
Set Screw	Steel
Ind. Ring (1½" - 2½") Ind. Ring (3" - 12")	Composite Steel

Other:

Model	Article Number	Suction x Discharge (in) 125# ANSI Flanged (unless noted)	Tagging Info	Quantity
WTDV 1.5 THD	2714241	1½" NPT		
WTDV 2 THD	2714242	2" NPT		
WTDV 2.5 THD	2714243	2½" NPT		
WTDV 2	2714244	2"		
WTDV 2.5	2714245	2½"		
WTDV 3	2714246	3"		
WTDV 4	2714247	4"		
WTDV 5	2714248	5"		
WTDV 6	2714249	6"		
WTDV 8	2714250	8"		
WTDV 10	2714251	10"		
WTDV 12	2714252	12"		

Approval Stamp

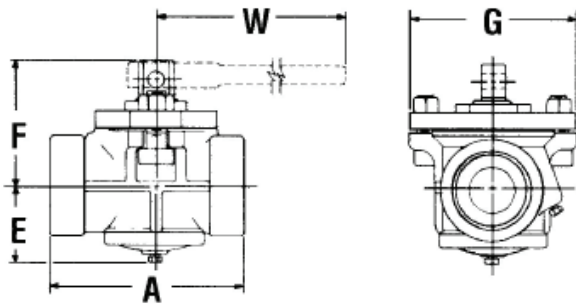
Submittal Data Sheet

Wilco TDV – Triple Duty Valves / Triple Service Valves

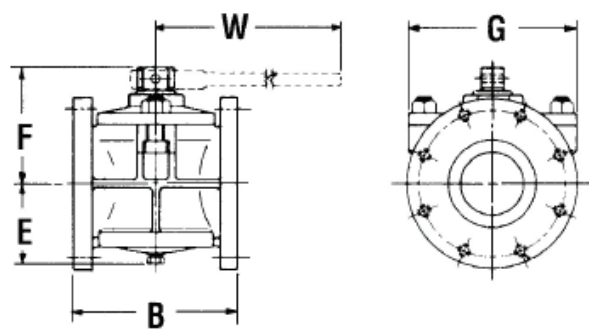


Dimensions and Weights

Threaded Ends Bolted Covers



Flanged Ends Bolted Covers



Wrench Operated Class – 175 lbs. WOG

Dimensions and Weights

Dimensions – Inches (mm)								
Part Number	Inlet/Outlet	A	B	E	F	G	W	Weight – lbs (kg)
2714241	1½" NPT	6.38 (162)	-	2.13 (54)	4.31 (110)	5.00 (127)	14.00 (356)	13 (6)
2714242	2" NPT	6.38 (162)	-	2.13 (54)	4.31 (110)	5.00 (127)	14.00 (356)	12 (5)
2714243	2½" NPT	8.25 (210)	-	2.75 (70)	5.75 (146)	6.63 (168)	16.25 (413)	26 (12)
2714244	2"	-	7.00 (178)	2.13 (54)	4.31 (110)	5.00 (127)	14.00 (356)	19 (9)
2714245	2½"	-	8.00 (203)*	2.75 (70)	5.75 (146)	6.63 (168)	16.25 (413)	40 (18)
2714246	3"	-	8.00 (203)*	2.75 (70)	5.75 (146)	6.63 (168)	16.25 (413)	42 (19)
2714247	4"	-	9.00 (229)*	3.25 (83)	6.63 (168)	6.75 (171)	16.25 (413)	64 (29)
2714248	5"	-	10.00 (25)	3.38 (86)	6.63 (168)	6.75 (171)	16.25 (413)	95 (43)
2714249	6"	-	10.50 (267)*	5.00 (127)	7.13 (181)	10.63 (270)	33.13 (842)	122 (55)
2714250	8"	-	11.50 (292)*	5.75 (146)	7.88 (200)	9.0 (229)	31.06 (789)	165 (75)
2714251	10"	-	16.00 (406)	7.50 (191)	9.88 (251)	10.56 (268)	33.06 (840)	270 (123)
2714252	12"	-	19.00 (483)	9.31 (437)	11.38 (289)	13.38 (340)	31.06 (789)	385 (175)

* All flange holes tapped size 1½, 2½, 3, 4, 6 and 8 inch valves.
 Flange dimensions per ANSI standard B16. 1, Class 125.
 NPT line pipe threads optional wrench available.

WILCO USA LLC

Tel: (888) 945-6872 Web: www.wilo-usa.com
 Fax: (888) 945-6873 Email: info@wilo-usa.com

WILCO Canada Inc.

Tel: (866) 945-6236 Web: www.wilo-canada.com
 Fax: (403) 277-9456 Email: info@wilo-canada.com

WILCO Mexico

Tel: +52 55 5586 3209 Web: www.wilo-mexico.com.mx
 Fax: +52 1 55 5413 4165 Email: roberto.valenzuela@wilo.com.mx