

## Multiple installation options

MagnaClean® DualXP's in-line design and 360° rotational connectors provide multiple installation options for both vertical and horizontal pipework. This ensures greater flexibility within tight working environments.



**Maximum working pressure:** 6 bar

**Maximum working temperature:** 95°C

**Flow rate:** Recommended rate for optimum capture up to 100 litres per minute

**Volume:** 2.43 litres (when telescopic connectors are retracted)



### FOR BEST RESULTS

Install and service with MC1+ Protector, the advanced system inhibitor from ADEY, Europe's largest water treatment manufacturer for central heating systems.

## MagnaClean DualXP

MagnaClean DualXP delivers exceptional protection against the damaging effects of black iron oxide sludge and non-magnetic debris. The unique design makes it a leader in its class giving professional installers a dedicated filter bridging the gap between ADEY's extensive domestic filter range, which is installed in more than three million UK homes, and the company's heavy duty commercial filters.

**IMPORTANT** Follow the Standard Electrical Best Practice guidelines when installing a MagnaClean filter. A copy of these guidelines can be found at: [www.hse.gov.uk/electricity](http://www.hse.gov.uk/electricity)

The inlet and outlet on MagnaClean DualXP are reversible and there is no flow restriction. Following installation, don't forget to complete the warranty card. Alternatively, complete the registration online at [adey.com/warranty](http://adey.com/warranty)



Telephone: +44 (0)1242 546717 Email: [info@adey.com](mailto:info@adey.com)  
[adey.com](http://adey.com)

Produced from recycled material  
 A carbon neutral company

LF2-01-02132

M03633

# MagnaClean® Dual XP

Installation and servicing  
instructions



# Installation

## Exceptional protection for 1½" or 1¼" light commercial heating systems

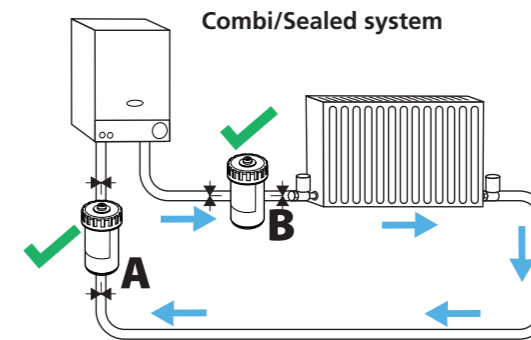
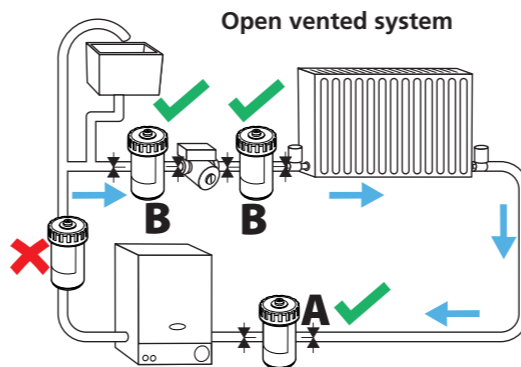
**MagnaClean® DualXP** has been developed by the industry leading and multi-award winning company that pioneered magnetic filtration within this sector. ADEY's filters are already protecting more than three million heating systems in the UK.

*MagnaClean DualXP* can be installed anywhere on the main circuit. However, to achieve the best level of protection for the boiler, it is recommended to install the filter after the last radiator on the system and before the boiler. It is important to install valves either side of the *MagnaClean DualXP*. Isolation valves and fittings for copper pipework not included.

The following instructions are designed to support engineers in the safe and effective installation and servicing of *MagnaClean DualXP* and should be followed at all times.

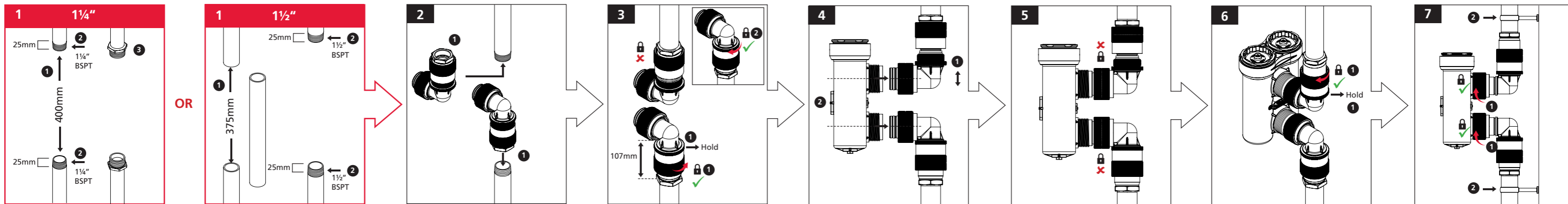
Any queries should be directed to your supervisor or ADEY direct on **01242 546717**.

*MagnaClean DualXP* is suitable for both domestic heating systems shown here as well as larger light commercial heating systems.



In both diagrams, position **A** is best practice, while **B** is suitable.

N.B. We firmly recommend *MagnaClean DualXP* is installed and serviced by a qualified heating engineer. Knurled nuts should be hand-tightened only.



# Servicing

Your system is protected by  
**MagnaClean®**  
*Dual XP*  
 Annual service required  
[adey.com](http://adey.com)

