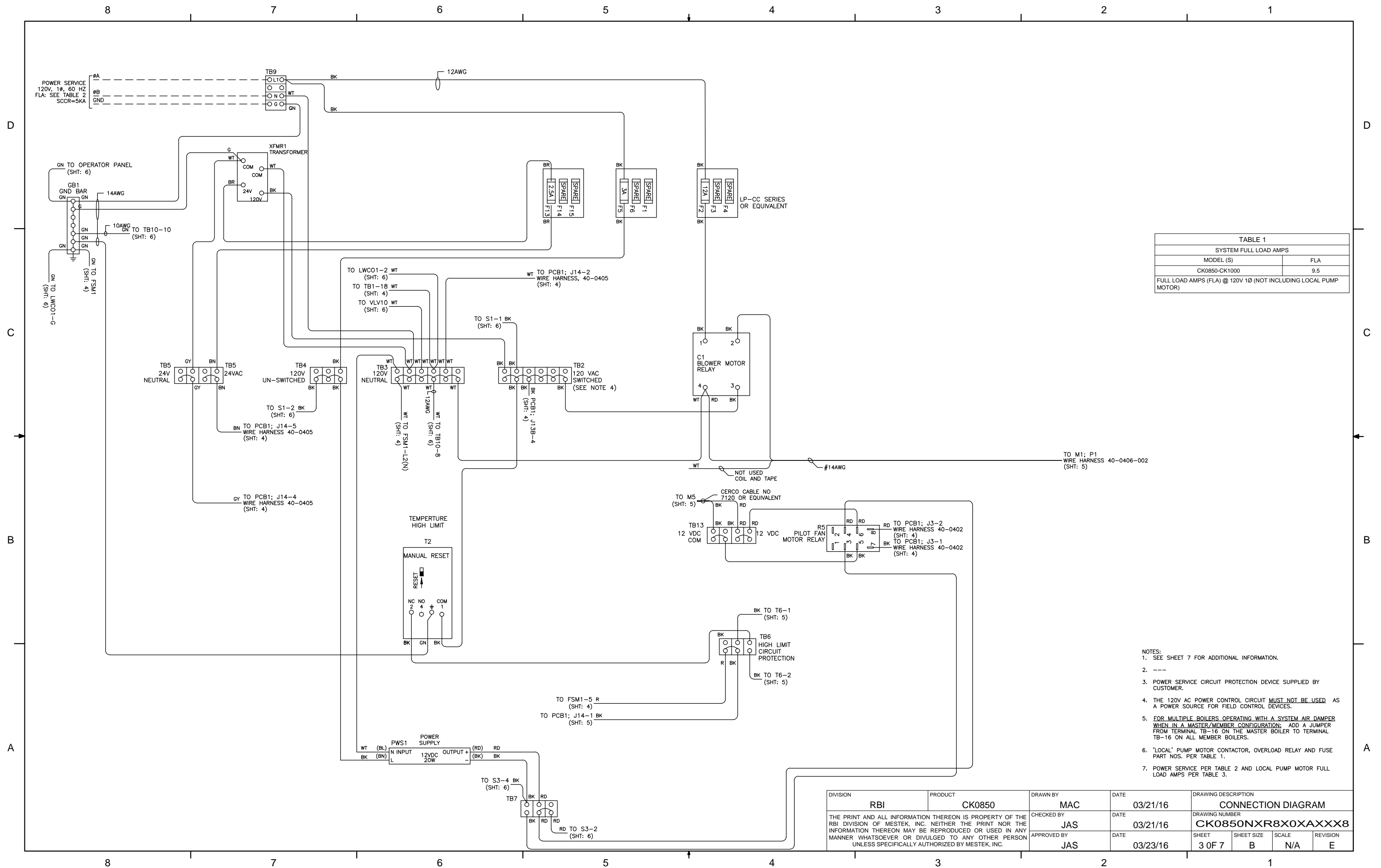


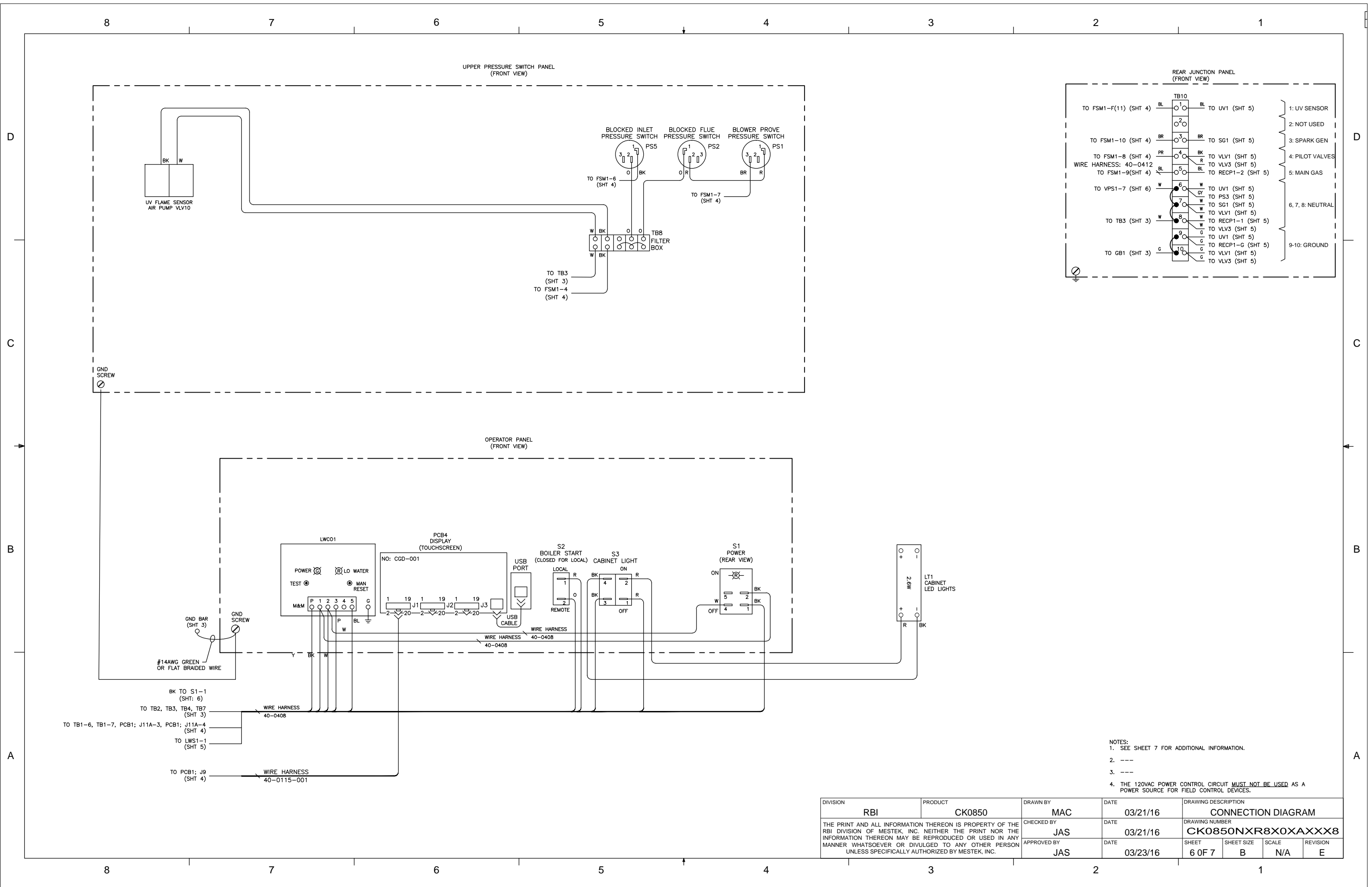
NOTES:  
1. SEE SHEET 3 FOR ADDITIONAL INFORMATION.

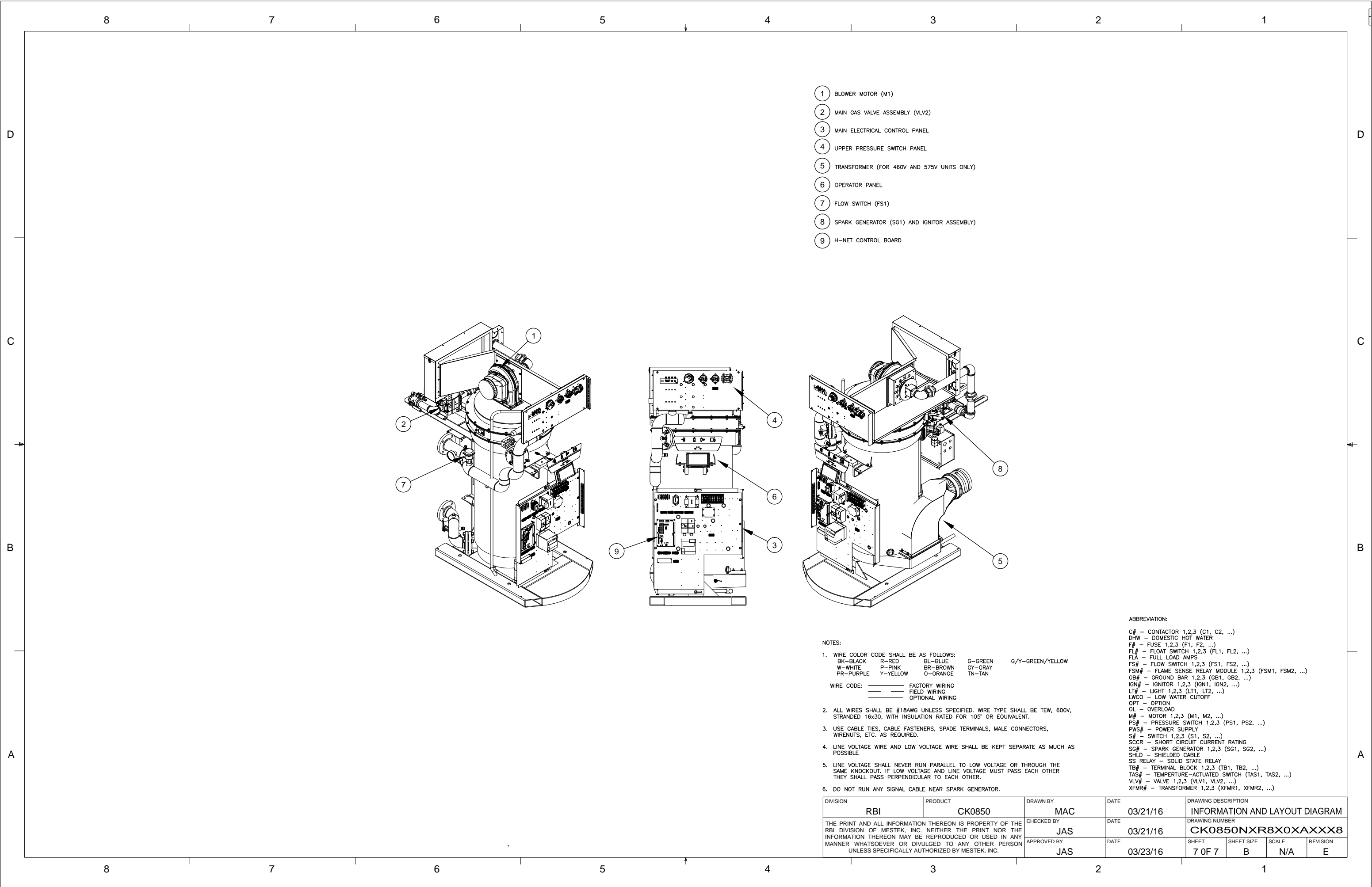
DIVISION	PRODUCT	DRAWN BY	DATE	DRAWING DESCRIPTION			
RBI	CK0850	MAC	03/21/16	LADDER DIAGRAM			
THE PRINT AND ALL INFORMATION THEREON IS PROPERTY OF THE RBI DIVISION OF MESTEK, INC. NEITHER THE PRINT NOR THE INFORMATION THEREON MAY BE REPRODUCED OR USED IN ANY MANNER WHATSOEVER OR DIVULGED TO ANY OTHER PERSON UNLESS SPECIFICALLY AUTHORIZED BY MESTEK, INC.			CHECKED BY	DATE	DRAWING NUMBER		
			JAS	03/21/16	CK0850NXR8X0XAXXX8		
			APPROVED BY	DATE	SHEET	SHEET SIZE	SCALE
			JAS	03/23/16	2 OF 7	B	N/A
							REVISION
							E











- 1 BLOWER MOTOR (M1)
- 2 MAIN GAS VALVE ASSEMBLY (VLV2)
- 3 MAIN ELECTRICAL CONTROL PANEL
- 4 UPPER PRESSURE SWITCH PANEL
- 5 TRANSFORMER (FOR 460V AND 575V UNITS ONLY)
- 6 OPERATOR PANEL
- 7 FLOW SWITCH (FS1)
- 8 SPARK GENERATOR (SG1) AND IGNITOR ASSEMBLY
- 9 H-NET CONTROL BOARD

- NOTES:
- WIRE COLOR CODE SHALL BE AS FOLLOWS:  
BK-BLACK    R-RED    BL-BLUE    G-GREEN    G/Y-GREEN/YELLOW  
W-WHITE    P-PINK    BR-BROWN    GY-GRAY  
PR-PURPLE    Y-YELLOW    O-ORANGE    TN-TAN
  - WIRE CODE:    ——— FACTORY WIRING  
                  — — — FIELD WIRING  
                  — — — OPTIONAL WIRING
  - ALL WIRES SHALL BE #18AWG UNLESS SPECIFIED. WIRE TYPE SHALL BE TEW, 600V, STRANDED 16x30, WITH INSULATION RATED FOR 105° OR EQUIVALENT.
  - USE CABLE TIES, CABLE FASTENERS, SPADE TERMINALS, MALE CONNECTORS, WIRENUTS, ETC. AS REQUIRED.
  - LINE VOLTAGE WIRE AND LOW VOLTAGE WIRE SHALL BE KEPT SEPARATE AS MUCH AS POSSIBLE
  - LINE VOLTAGE SHALL NEVER RUN PARALLEL TO LOW VOLTAGE OR THROUGH THE SAME KNOCKOUT. IF LOW VOLTAGE AND LINE VOLTAGE MUST PASS EACH OTHER THEY SHALL PASS PERPENDICULAR TO EACH OTHER.
  - DO NOT RUN ANY SIGNAL CABLE NEAR SPARK GENERATOR.

- ABBREVIATION:
- C# - CONTACTOR 1,2,3 (C1, C2, ...)
  - DHW - DOMESTIC HOT WATER
  - F# - FUSE 1,2,3 (F1, F2, ...)
  - FL# - FLOAT SWITCH 1,2,3 (FL1, FL2, ...)
  - FLA - FULL LOAD AMPS
  - FS# - FLOW SWITCH 1,2,3 (FS1, FS2, ...)
  - FSM# - FLAME SENSE RELAY MODULE 1,2,3 (FSM1, FSM2, ...)
  - GB# - GROUND BAR 1,2,3 (GB1, GB2, ...)
  - IGN# - IGNITOR 1,2,3 (IGN1, IGN2, ...)
  - LT# - LIGHT 1,2,3 (LT1, LT2, ...)
  - LWCO - LOW WATER CUTOFF
  - OPT - OPTION
  - OL - OVERLOAD
  - M# - MOTOR 1,2,3 (M1, M2, ...)
  - PS# - PRESSURE SWITCH 1,2,3 (PS1, PS2, ...)
  - PWS# - POWER SUPPLY
  - S# - SWITCH 1,2,3 (S1, S2, ...)
  - SCCR - SHORT CIRCUIT CURRENT RATING
  - SG# - SPARK GENERATOR 1,2,3 (SG1, SG2, ...)
  - SHLD - SHIELDED CABLE
  - SS RELAY - SOLID STATE RELAY
  - TB# - TERMINAL BLOCK 1,2,3 (TB1, TB2, ...)
  - TAS# - TEMPATURE-ACTUATED SWITCH (TAS1, TAS2, ...)
  - VLV# - VALVE 1,2,3 (VLV1, VLV2, ...)
  - XFMR# - TRANSFORMER 1,2,3 (XFMR1, XFMR2, ...)

DIVISION	PRODUCT	DRAWN BY	DATE	DRAWING DESCRIPTION			
RBI	CK0850	MAC	03/21/16	INFORMATION AND LAYOUT DIAGRAM			
THE PRINT AND ALL INFORMATION THEREON IS PROPERTY OF THE RBI DIVISION OF MESTEK, INC. NEITHER THE PRINT NOR THE INFORMATION THEREON MAY BE REPRODUCED OR USED IN ANY MANNER WHATSOEVER OR DIVULGED TO ANY OTHER PERSON UNLESS SPECIFICALLY AUTHORIZED BY MESTEK, INC.		CHECKED BY	DATE	DRAWING NUMBER			
		JAS	03/21/16	CK0850NXR8X0XAXXX8			
		APPROVED BY	DATE	SHEET	SHEET SIZE	SCALE	REVISION
		JAS	03/23/16	7 OF 7	B	N/A	E