



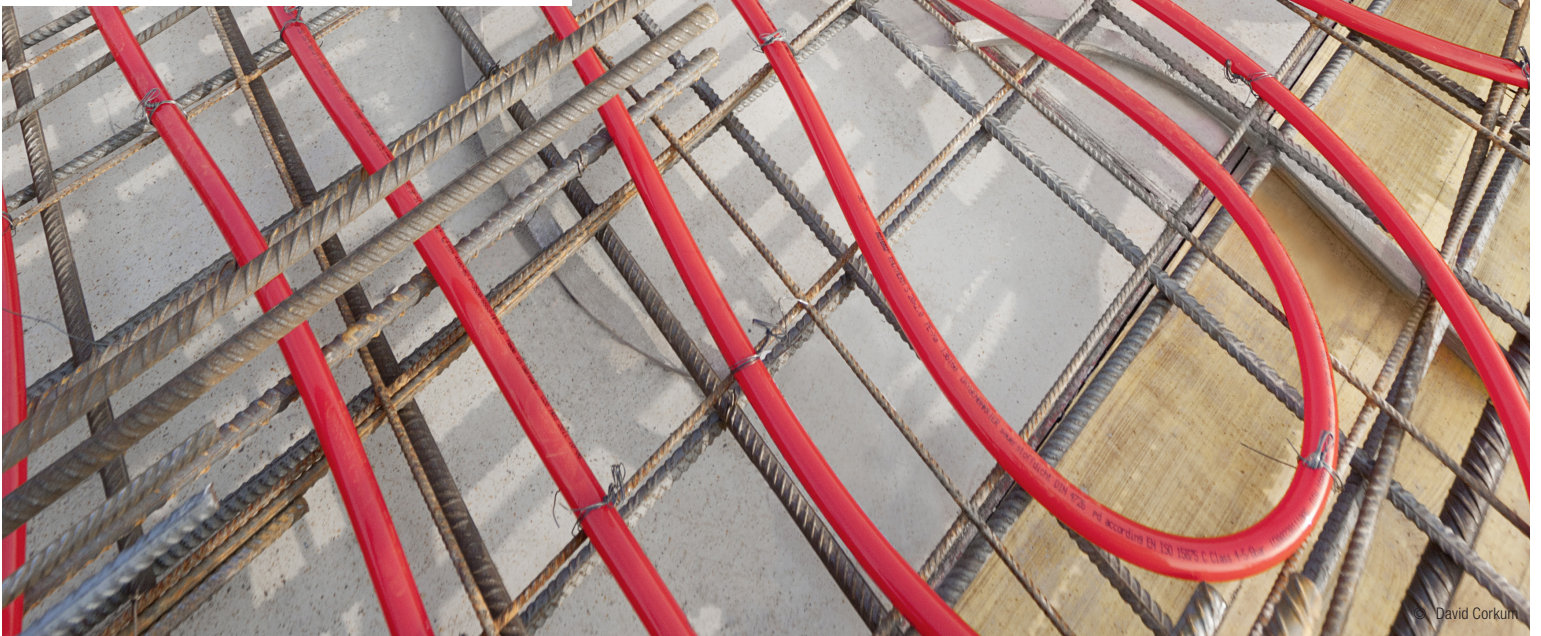
REHAU

Unlimited Polymer Solutions



PEXa vs PERT

There's just no comparison.



PEX SETS THE STANDARDS

On key performance attributes, it's like apples to oranges.

	RAUPEX® PEXa Pipe (Crosslinked Polyethylene)	PERT (Polyethylene of Raised Temperature)
Level of Crosslinking	High degree of crosslinking which provides high toughness for jobsite use and longevity.	None. PERT is simply an over-stabilized HDPE.
Thermal Memory	Excellent thermal memory which allows kink repairs. In ASTM F876 Hot Bend test, RAUPEX pipes are heated, bent, then pressurized for 1,000 hours (42 days) at 180°F (82°C).	Poor to no thermal memory. Kink repair is not possible. ASTM Hot Bend test cannot be performed on PERT tubing, since the pipes melt when heated with hot air.
UV Resistance	Proven UV resistance (up to 1 year depending on type of RAUPEX) based on ASTM F876 and F2657.	Unknown. PERT has no test method for proving this, so PERT customers have no options for specifying UV performance, and no qualification of UV resistance claims.
Maximum Operating Temperature Rating	As high as 200°F (93°C).	Up to 180°F (82°C).
Temperature / Pressure Ratings	PEX is required to withstand 720 hrs of 150 psig constant pressure with water at 210°F (99°C) before failure. RAUPEX surpasses the 720 hrs.	PERT is only required to withstand 48 hrs and cannot meet the same temperature / pressure ratings as PEX.
Environmental Stress Crack (Resistance to Cracking)	PEX is required to withstand 100 hrs before failure. Testing has shown that RAUPEX can withstand more than 1,000 hrs.	Unknown. PERT has no test method for proving this. Testing to the PEX standard shows that PERT failed after 10 hrs.
Flexibility	Bend radius at 5 times the OD. Kink repair is possible.	Bend radius at 5 times the OD. Kink repair is NOT possible.
Performance	More than 40 years of proven performance on the jobsite throughout North America.	Limited experience of 3-5 years in North America.

PERT cannot meet the testing requirements in the PEX ASTM F876 standard.

For updates to this publication, visit na.rehau.com/resourcecenter

The information contained herein is believed to be reliable, but no representations, guarantees or warranties of any kind are made as to its accuracy, suitability for particular applications or the results to be obtained therefrom. Before using, the user will determine suitability of the information for user's intended use and shall assume all risk and liability in connection therewith. © 2017 REHAU

Printed in USA 855.776en 07.2017